



Chipsmall Limited consists of a professional team with an average of over 10 year of expertise in the distribution of electronic components. Based in Hongkong, we have already established firm and mutual-benefit business relationships with customers from,Europe,America and south Asia,supplying obsolete and hard-to-find components to meet their specific needs.

With the principle of “Quality Parts,Customers Priority,Honest Operation,and Considerate Service”,our business mainly focus on the distribution of electronic components. Line cards we deal with include Microchip,ALPS,ROHM,Xilinx,Pulse,ON,Everlight and Freescale. Main products comprise IC,Modules,Potentiometer,IC Socket,Relay,Connector.Our parts cover such applications as commercial,industrial, and automotives areas.

We are looking forward to setting up business relationship with you and hope to provide you with the best service and solution. Let us make a better world for our industry!



## Contact us

Tel: +86-755-8981 8866 Fax: +86-755-8427 6832

Email & Skype: info@chipsmall.com Web: www.chipsmall.com

Address: A1208, Overseas Decoration Building, #122 Zhenhua RD., Futian, Shenzhen, China





## 51W LED Driver with 2 Channel Constant Current Outputs PDA051B LED Power Supply



### Features

- 2 Channel Output
- OVP, OCP, OTP and Short-Circuit Protection & Brownout Protection
- IP65
- Class 2 Output per UL1310
- THD <20% &  $\geq 0.9$  Power Factor

### Applications

- Troffers

### Safety Approvals

- cUL/UL 8750
- Class 2 Output per UL1310

### Mechanical Characteristics

- Length: 242mm (9.53in)
- Width: 43.5mm (1.71in)
- Height: 30.5mm (1.2in)
- Weight: 650g

### Output Specifications

#### Channel 1~2

Model	DC Output Voltage			Output Current	Output Power
	Min.	Typ.	Max.		
PDA051B-700G	30V	33V	36V	700mA	25.5W

Phihong is not responsible for any error, and reserves the right to make changes without notice. Please visit our website at [www.phihong.com](http://www.phihong.com) for the most up-to-date specifications and contact information.

**INPUT:**

**AC Input Voltage Rating**  
108~304VAC

**Nominal AC Input Voltage**  
120 to 277VAC

**AC Input Frequency**  
47~63 Hz

**Maximum Input Current**  
≤ 0.64A

**Leakage Current**  
0.75mA maximum

**Power Factor**  
≥ 0.9

**THD**  
< 20%

**OUTPUT:**

**Output Current Ripple**  
450mA(p-p)

**Efficiency**  
81% at 120VAC  
83% at 277VAC  
Typical Efficiency 85%

**Environmental:**

**Temperature**  
Operation case                    0 to Tc +70°C  
Non-operation                    -40 to +85°C  
Operating Humidity            10% to 95%

**EMC**

FCC 47 CFR Part 15, Class A

**Immunity**

IEC61000-4-2  
IEC61000-4-5  
IEC61000-4-11

**Dielectric Withstand (Hi-pot) Test**

Primary to secondary: 3000VAC for 1 minute, 10mA

**Insulation Resistance**

Primary to secondary: >5M Ohm 500VDC, 1 Minute

**Short-Circuit Protection**

Latch requires power cycle to restart

**Output Over-voltage Protection**

Max Voltage Limit 63V

**Over Temperature Protection**

Max Temperature Limit 85°C

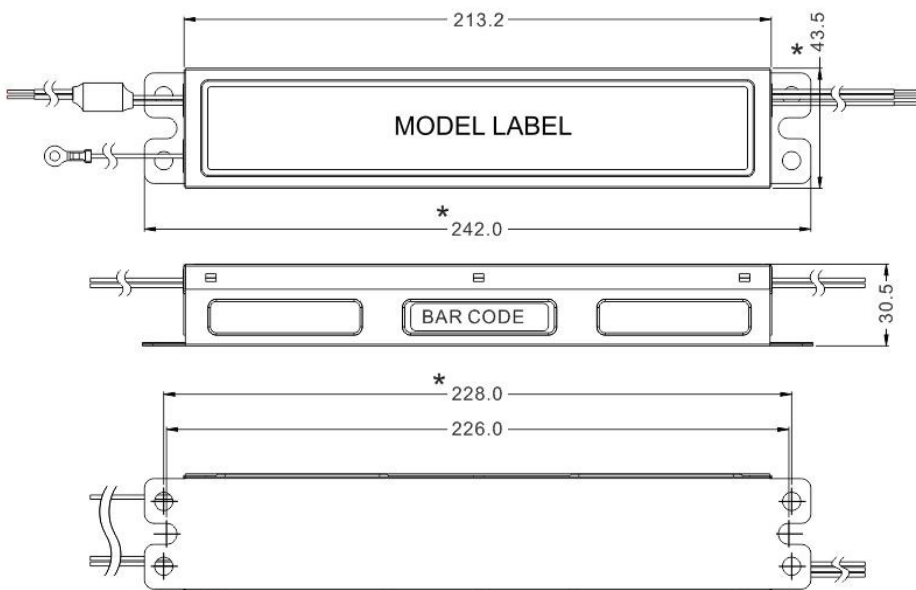
**Input / Output Connections**

	Color	Specification	Length
<b>Input</b>	Black	AWG18 Solid Wire	360mm
	White	AWG18 Solid Wire	
<b>Output</b>	Red(+)	AWG18 Solid Wire	200mm
	Blue(-)	AWG18 Solid Wire	
<b>Aux</b>	Green/ Yellow	AWG18 Solid Wire	220mm

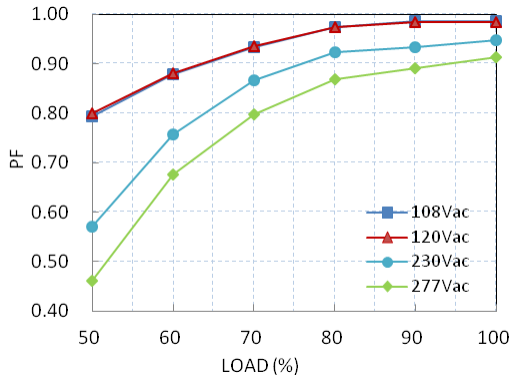
**Warranty**

5 Years

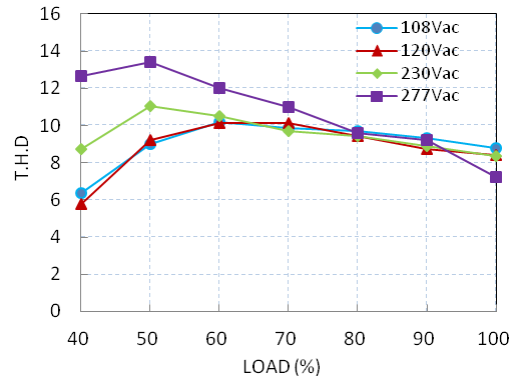
**Dimesino Diagram unit: mm**



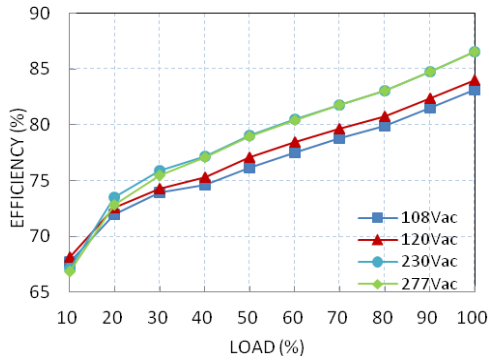
Power Factor vs. Load



Total Harmonic Distortion vs. Load



Lifetime vs. Tc



Efficiency vs. Load

