



Chipsmall Limited consists of a professional team with an average of over 10 year of expertise in the distribution of electronic components. Based in Hongkong, we have already established firm and mutual-benefit business relationships with customers from,Europe,America and south Asia,supplying obsolete and hard-to-find components to meet their specific needs.

With the principle of "Quality Parts,Customers Priority,Honest Operation,and Considerate Service",our business mainly focus on the distribution of electronic components. Line cards we deal with include Microchip,ALPS,ROHM,Xilinx,Pulse,ON,Everlight and Freescale. Main products comprise IC,Modules,Potentiometer,IC Socket,Relay,Connector.Our parts cover such applications as commercial,industrial, and automotives areas.

We are looking forward to setting up business relationship with you and hope to provide you with the best service and solution. Let us make a better world for our industry!



## Contact us

Tel: +86-755-8981 8866 Fax: +86-755-8427 6832

Email & Skype: info@chipsmall.com Web: www.chipsmall.com

Address: A1208, Overseas Decoration Building, #122 Zhenhua RD., Futian, Shenzhen, China





**60W Constant Voltage LED Driver  
PDA060B Waterproof LED Driver Non-Dimming**



**Features**

- Class 2 per UL1310
- OVP, OCP, Over-Load and Short-Circuit Protection
- >0.9 Power Factor Correction
- IP67 Rating - waterproof
- THD <20%
- UL 8750 Compliant
- Brownout/Brownout Recovery

**Applications**

- Down lights
- Area Lights
- Architectural lighting

**Safety Approvals (Pending)**

- cUL/UL

**Mechanical Characteristics**

- Length: 162.5mm (6.39in)
- Width: 43mm (1.69in)
- Height: 32mm (1.26in)
- Weight: 342g (12.1oz)

**Output Specifications**

Model	Output Current Range			DC Output Voltage	Output Power
	Min.	Typ.	Max.		
PDA060B-24VB	0A	-	2.5A	24V	60W
PDA060B-48VB	0A	-	1.25A	48V	60W

Phihong is not responsible for any error, and reserves the right to make changes without notice. Please visit our website at [www.phihong.com](http://www.phihong.com) for the most up-to-date specifications and contact information.

**INPUT:**

**AC Input Voltage Rating**  
120VAC to 277VAC

**AC Input Frequency**  
47~63Hz

**Maximum Input Current**  
≤ 0.9A

**Leakage Current**  
0.25mA maximum

**Power Factor**  
≥ 0.9

**THD**  
Less than 20%

**OUTPUT:**  
**Output Voltage Ripple**  
≤8% (p-p)

**Efficiency**

Model	Typical Efficiency
PDA060B-24VB	89%
PDA060B-48VB	91%

**Environmental:**

**Temperature**

Operation\*                   -40 to +50°C

Non-operation               -40 to +80°C

Operating Humidity        20 to 95%

\*Output derates from 50°C to 70°C

**EMC**

FCC 47 Part 18 Class B

**Immunity**

IEC61000-4-2

IEC61000-4-4

IEC61000-4-5

IEC61000-4-11

**Dielectric Withstand (Hi-pot) Test**

Primary to secondary: 3000VAC for 1 minute, 10mA

**Insulation Resistance**

Primary to secondary: >10M Ohm 500VDC, 1 Minute

**FEATURES:**

**Short-Circuit Protection**

The PSU will withstand a short circuit across the outputs without damage, auto-restart

**Input Over Current Protection**

The input power line will be fused with a 2A/300V fuse

**Output Over-voltage Protection**

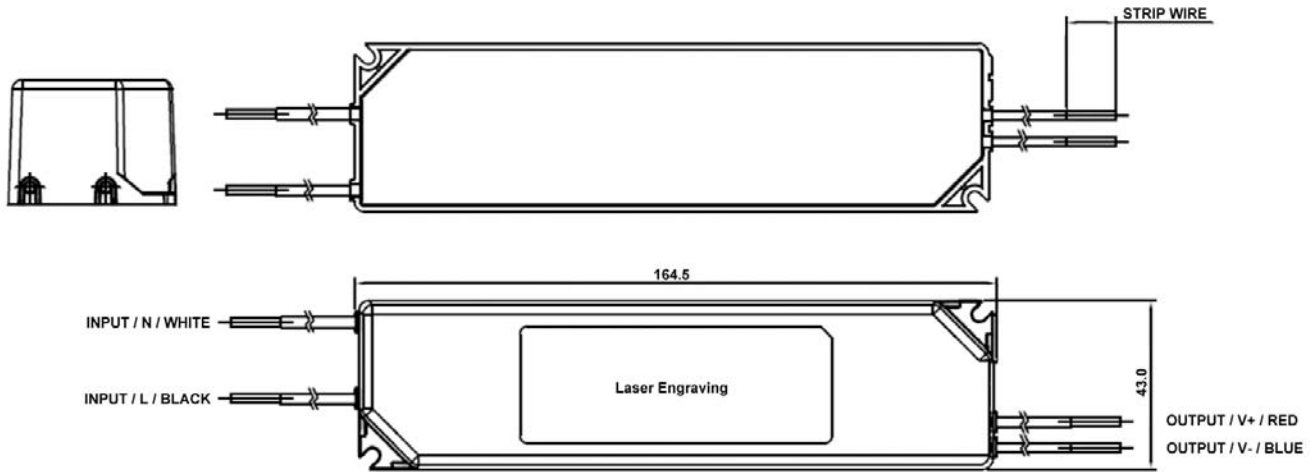
Latching, auto shutdown

**Input / Output Connections**

Position	Terminal Color	Specification
Input	Black	AWG16 Solid Wire
	White	AWG16 Solid Wire
Output	Red	AWG18 Solid Wire
	Blue	AWG18 Solid Wire

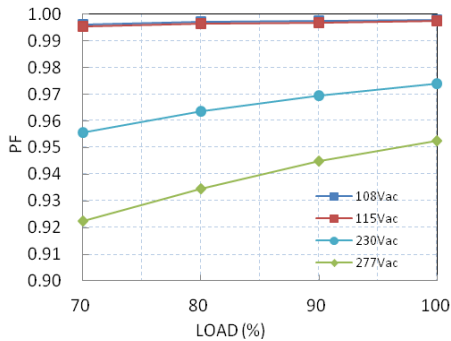
**Warranty**

5 Years

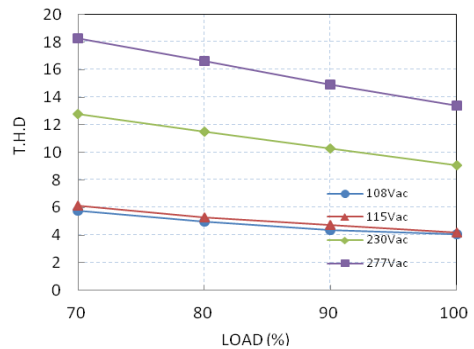


Typical Characteristics

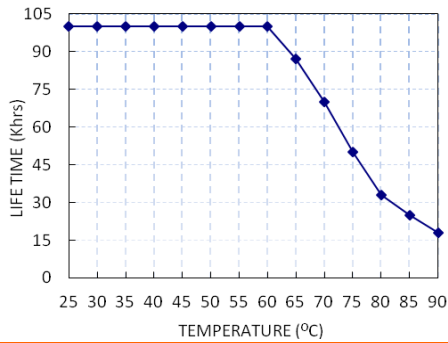
Power Factor vs. Load



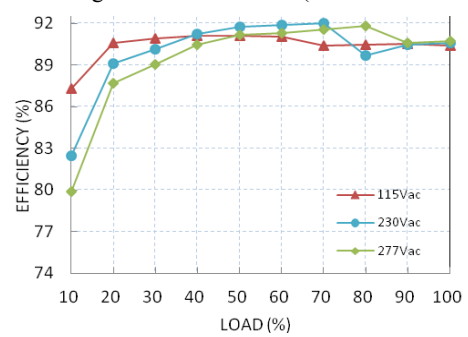
Total Harmonic Distortion vs. Load



Lifetime vs. Tc

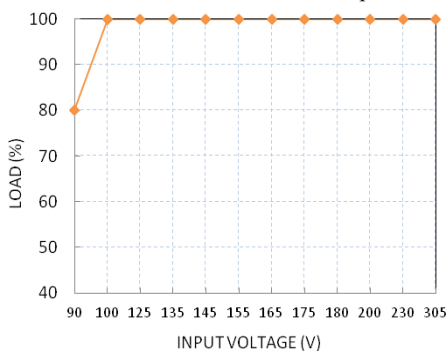


Derating Curve: Load vs. Ta (PDA060B-48VB)



Temperature Rating

Static Characteristic: Load vs. Input Voltage



Efficiency vs. Load

