



Chipsmall Limited consists of a professional team with an average of over 10 year of expertise in the distribution of electronic components. Based in Hongkong, we have already established firm and mutual-benefit business relationships with customers from,Europe,America and south Asia,supplying obsolete and hard-to-find components to meet their specific needs.

With the principle of “Quality Parts,Customers Priority,Honest Operation,and Considerate Service”,our business mainly focus on the distribution of electronic components. Line cards we deal with include Microchip,ALPS,ROHM,Xilinx,Pulse,ON,Everlight and Freescale. Main products comprise IC,Modules,Potentiometer,IC Socket,Relay,Connector.Our parts cover such applications as commercial,industrial, and automotives areas.

We are looking forward to setting up business relationship with you and hope to provide you with the best service and solution. Let us make a better world for our industry!



## Contact us

Tel: +86-755-8981 8866 Fax: +86-755-8427 6832

Email & Skype: info@chipsmall.com Web: www.chipsmall.com

Address: A1208, Overseas Decoration Building, #122 Zhenhua RD., Futian, Shenzhen, China





## 75W LED Driver with 3 Channel Constant Current Outputs PDA075W 0-10V Dimming LED Power Supply



### Features

- Class 2 Output per UL1310
- OVP and Short-Circuit Protection
- 3 Channel Output
- IP66
- THD <20% &  $\geq 0.9$  Power Factor
- Brownout Protection

### Applications

- Troffers

### Safety Approvals

- cUL/UL8750
- Class 2 Output per UL1310

### Mechanical Characteristics

- Length: 242mm (9.53in)
- Width: 43.5mm (1.71in)
- Height: 30.5mm (1.2in)
- Weight: 650g

### Output Specifications

#### Channel 1~3

Model	DC Output Voltage			Output Current	Output Power
	Min.	Typ.	Max.		
PDA075W-T700G	28V	31V	33V	700mA	25W

Phihong is not responsible for any error, and reserves the right to make changes without notice. Please visit our website at [www.phihong.com](http://www.phihong.com) for the most up-to-date specifications and contact information.

**INPUT:**

**AC Input Voltage**  
108~304VAC

**Nominal AC Input Voltage**  
120~277VAC

**Maximum Input Current**  
0.82A (RMS) at 108Vac, 60Hz

**Leakage Current**  
0.75mA maximum at 277VAC

**AC Inrush Current**  
<100A at 277VAC, 60 Hz

**Power Factor**  
≥ 0.9

**THD**  
< 20%

**Ripple (Ch1~Ch3)**  
240mA p-p

**Turn on/off Time**  
3 seconds maximum at nominal AC input  
0.5 seconds maximum at nominal AC input

**Efficiency**  
85% at 120VAC  
85% at 277VAC  
Typical Efficiency 87%

**Standby Power**  
<1W maximum

**Environmental:  
Temperature**

Operating 0 to Tc +70°C  
Non-operation -40 to +85°C  
Operating Humidity 10% to 95%

**EMC**

FCC 47 CFR Part 15, Class A

**Immunity**

IEC61000-4-2  
IEC61000-4-5  
IEC61000-4-11

**Dielectric Withstand (Hi-pot) Test**

Primary to secondary: 3000VAC for 1 minute, 10mA

**Insulation Resistance**

Primary to secondary: >5M Ohm 500VDC, 1 Minute

**Short-Circuit Protection**

Auto-Recovery

**Open Circuit and Output Over-voltage Protection**

Max Voltage Limit 42V

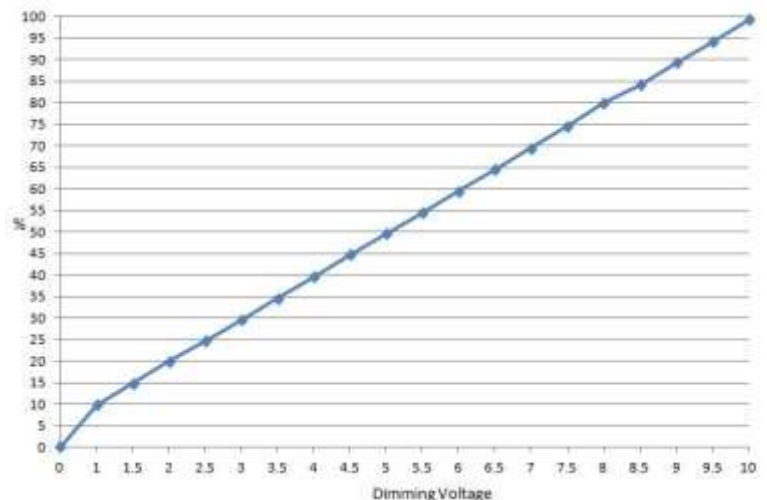
**Input / Output Connections**

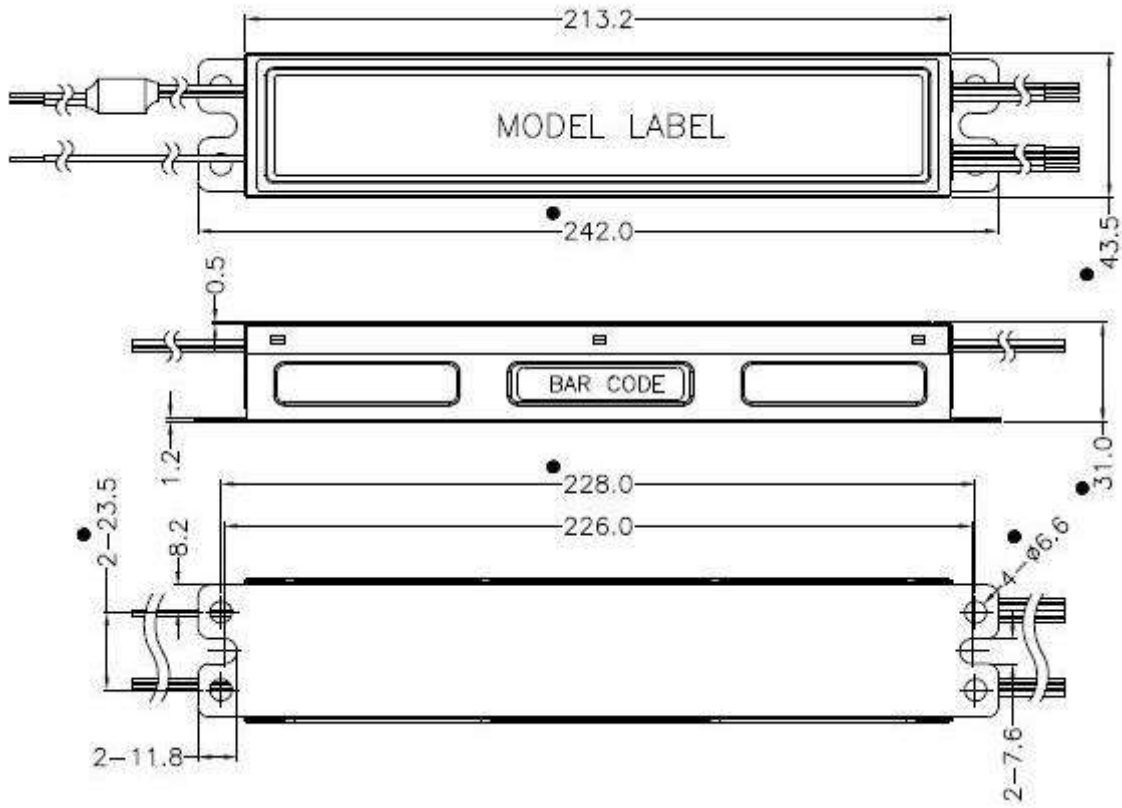
Position	Terminal Color	Specification	Length
Input	Black	AWG16 Solid Wire	660mm
	White	AWG16 Solid Wire	660mm
Output	Red(+)	AWG18 Solid Wire	250mm
	Blue(-)	AWG18 Solid Wire	250mm
Dim+	Purple(+)	AWG18 Solid Wire	250mm
Dim-	Grey(-)	AWG18 Solid Wire	250mm
Auxiliary	Yellow	AWG18 Solid Wire	250mm

**Warranty**

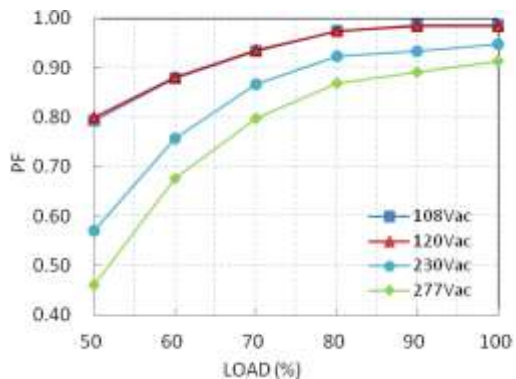
5 Year

**Dimming Curve**

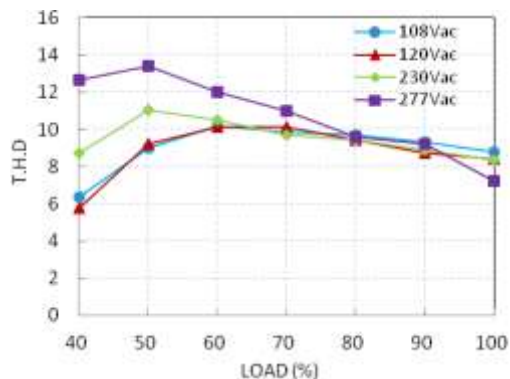




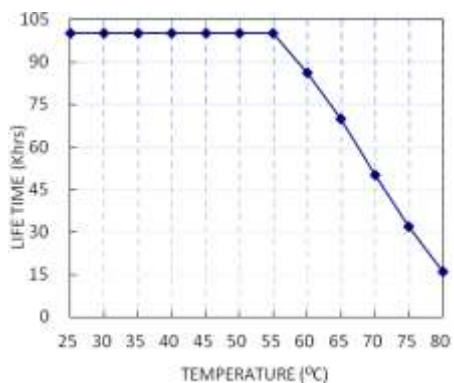
Power Factor vs. Load



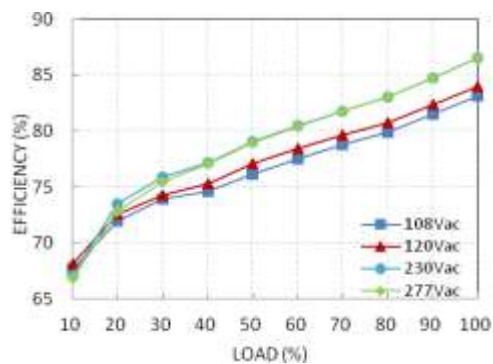
Total Harmonic Distortion vs. Load



Lifetime vs. Tc

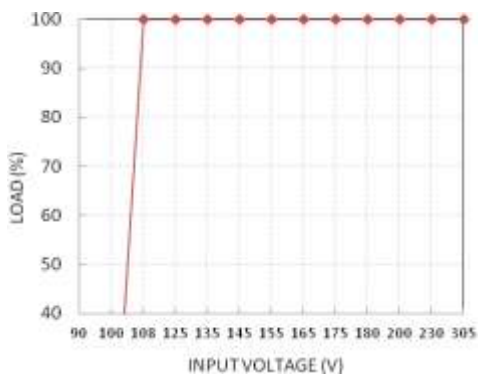


Efficiency vs. Load



Temperature Rating

Static Characteristic: Load vs. Input Voltage



Derating Curve: Load vs Ta

