



Chipsmall Limited consists of a professional team with an average of over 10 year of expertise in the distribution of electronic components. Based in Hongkong, we have already established firm and mutual-benefit business relationships with customers from,Europe,America and south Asia,supplying obsolete and hard-to-find components to meet their specific needs.

With the principle of “Quality Parts,Customers Priority,Honest Operation,and Considerate Service”,our business mainly focus on the distribution of electronic components. Line cards we deal with include Microchip,ALPS,ROHM,Xilinx,Pulse,ON,Everlight and Freescale. Main products comprise IC,Modules,Potentiometer,IC Socket,Relay,Connector.Our parts cover such applications as commercial,industrial, and automotives areas.

We are looking forward to setting up business relationship with you and hope to provide you with the best service and solution. Let us make a better world for our industry!



Contact us

Tel: +86-755-8981 8866 Fax: +86-755-8427 6832

Email & Skype: info@chipsmall.com Web: www.chipsmall.com

Address: A1208, Overseas Decoration Building, #122 Zhenhua RD., Futian, Shenzhen, China





100W Constant Current LED Driver PDA100W LED Power Supply with 0-10V Dimming



Features

- OVP, OTP Short and Open Circuit Protections
- Brownout Protection
- High Efficiency
- IP66 Rated
- 108-304VAC Input Range
- Wide Operating Temperature Range
- ≥ 0.9 Power Factor Correction & THD 20%

Applications

- General Lighting
- Street Lighting
- Outdoor Lighting
- Architectural Lighting

Safety Approvals

- cUL/UL 8750

Mechanical Characteristics

- Length: 241mm (9.49in)
- Width: 59mm (2.32in)
- Height: 39mm (1.54in)
- Weight: 1050g (37.04oz)

Output Specifications

Model	DC Output Voltage			Output Current	Output Power
	Min.	Typ.	Max.		
PDA100W-700GB	93V	136V	143V	700mA	100W
PDA100W-1A0GB	65V	95V	100V	1050mA	100W
PDA100W-1A4GB	46V	58V	72V	1400mA	100W
PDA100W-1A8GB	34V	45V	57V	1750mA	100W
PDA100W-2A1GB	30V	36V	48V	2100mA	100W

Phihong is not responsible for any error, and reserves the right to make changes without notice. Please visit our website at www.phihong.com for the most up-to-date specifications and contact information.

Input:

AC Input Voltage Range
108VAC to 304VAC

Nominal AC Input Voltage
120 to 277VAC

AC Input Frequency
47~63Hz

Maximum Input Current
≤ 1.26A

Leakage Current
0.75mA maximum at 120VAC Input

Inrush Current
< 80A

OUTPUT:

Power Factor
≥ 0.9

Output Current Ripple
<105mA (p-p)

Efficiency

Model	Typical Efficiency
PDA100W-700GB	91%
PDA100W-1A0GB	91%
PDA100W-1A4GB	89%
PDA100W-1A8GB	89%
PDA100W-2A1GB	89%

Turn-on Delay Time

<0.5s maximum at nominal AC Power ON

Environmental:

Temperature

Operation Tc -40 to 83°C
Non-operation -40 to +90°C
Operating Humidity 5 to 98%

Dimming Grounding

Dim(-) and Vout(-) must never be connected together to ensure proper operation and isolation requirements

EMC

FCC Part 15 Class A

Immunity

IEC61000-4-2
IEC61000-4-5
IEC61000-4-11
IEC61000-3-2 Class C

Input Over Current Protection

The input power line will be fused with a 3.15A fuse

Short-Circuit Protection

The Driver will withstand a short circuit across the outputs without damage.

Over Temperature Protection

The load will drop by 50% automatically if the case temperature exceeds the recommended limit.

Over Voltage Protection

During no load condition, the over voltage protection trigger level should be less than 195Vrms.

Dielectric Withstand (Hi-pot) Test

Primary to secondary: 4242VDC for 1 minute, 5.5mA

Insulation Resistance

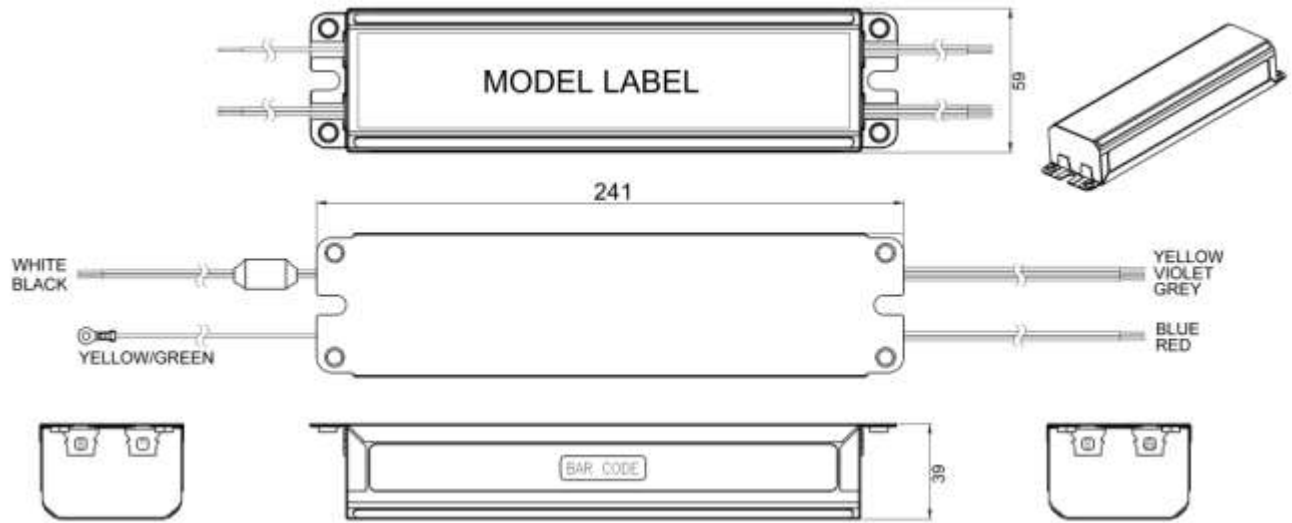
Primary to secondary: >5M Ohm 500VDC, 1 Minute

Wire Connections

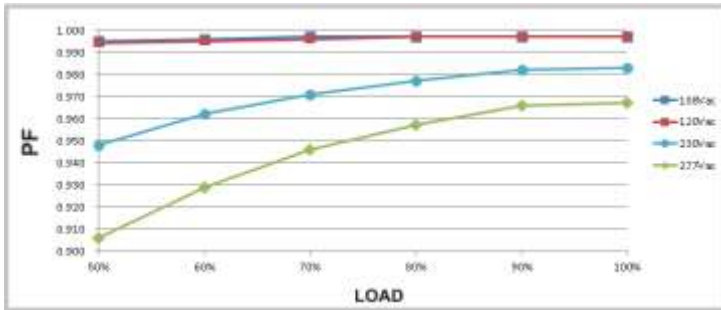
Position	Terminal Color	Specification	Length
Line	Black	AWG18 Solid Wire	390mm
Neutral	White	AWG18 Solid Wire	390mm
Ground	Green/Yellow	AWG18 Solid Wire	390mm
Vout+	Red	AWG18 Solid Wire	390mm
Vout-	Blue	AWG18 Solid Wire	390mm
20V	Yellow	AWG22 Solid Wire	390mm
Dim+	Violet	AWG22 Solid Wire	390mm
Dim-	Grey	AWG22 Solid Wire	390mm

Warranty

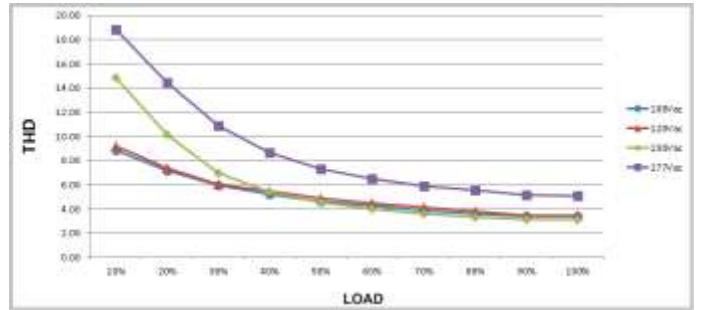
5 Years



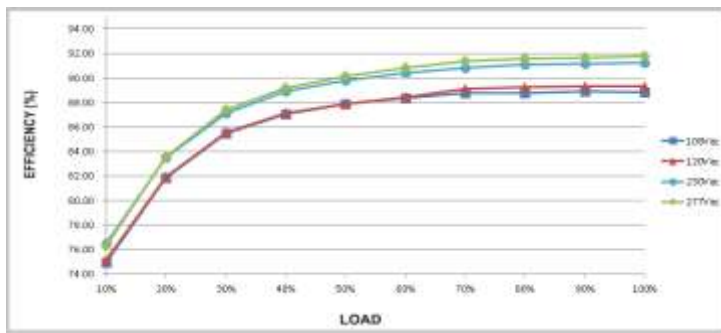
Power Factor vs. Load



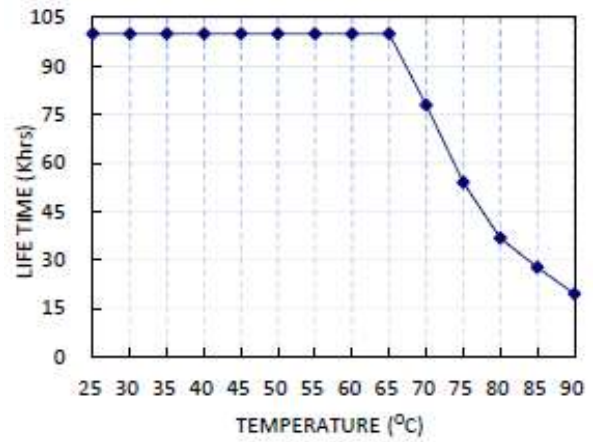
Total Harmonic Distortion vs. Load



Efficiency vs. Load for PDA100W-700GB



Lifetime vs. Tc



Dimming Curve

