



Chipsmall Limited consists of a professional team with an average of over 10 year of expertise in the distribution of electronic components. Based in Hongkong, we have already established firm and mutual-benefit business relationships with customers from,Europe,America and south Asia,supplying obsolete and hard-to-find components to meet their specific needs.

With the principle of "Quality Parts,Customers Priority,Honest Operation,and Considerate Service",our business mainly focus on the distribution of electronic components. Line cards we deal with include Microchip,ALPS,ROHM,Xilinx,Pulse,ON,Everlight and Freescale. Main products comprise IC,Modules,Potentiometer,IC Socket,Relay,Connector.Our parts cover such applications as commercial,industrial, and automotives areas.

We are looking forward to setting up business relationship with you and hope to provide you with the best service and solution. Let us make a better world for our industry!



Contact us

Tel: +86-755-8981 8866 Fax: +86-755-8427 6832

Email & Skype: info@chipsmall.com Web: www.chipsmall.com

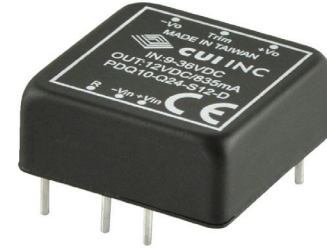
Address: A1208, Overseas Decoration Building, #122 Zhenhua RD., Futian, Shenzhen, China



SERIES: PDQ10-D | **DESCRIPTION:** DC-DC CONVERTER

FEATURES

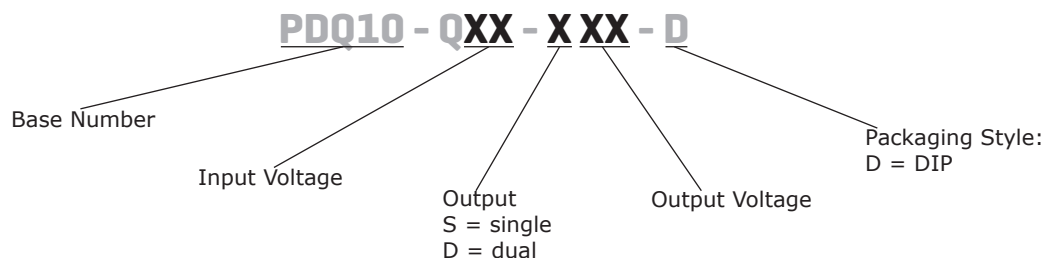
- up to 10 W isolated output
- industry standard 1" x 1" package
- 4:1 input range
- single/dual regulated output
- over voltage, input under voltage lockout, and short circuit protections
- 1,500 Vdc isolation voltage
- five-sided shielded case
- remote on/off control
- output trim
- -40 to 105°C temperature range
- efficiency up to 86%



MODEL	input voltage		output voltage	output current		output power	ripple & noise ¹	efficiency
	typ (Vdc)	range (Vdc)	(Vdc)	min (mA)	max (mA)	max (W)	max (mVp-p)	typ (%)
PDQ10-Q24-S3-D	24	9~36	3.3	0	2500	8.25	75	81
PDQ10-Q24-S5-D	24	9~36	5	0	2000	10	75	84
PDQ10-Q24-S12-D	24	9~36	12	0	835	10	100	86
PDQ10-Q24-S15-D	24	9~36	15	0	666	10	100	86
PDQ10-Q24-D5-D	24	9~36	±5	0	±1000	10	75	84
PDQ10-Q24-D12-D	24	9~36	±12	0	±416	10	100	86
PDQ10-Q24-D15-D	24	9~36	±15	0	±333	10	100	86
PDQ10-Q48-S3-D	48	18~75	3.3	0	2500	8.25	75	82
PDQ10-Q48-S5-D	48	18~75	5	0	2000	10	75	84
PDQ10-Q48-S12-D	48	18~75	12	0	835	10	100	86
PDQ10-Q48-S15-D	48	18~75	15	0	666	10	100	86
PDQ10-Q48-D5-D	48	18~75	±5	0	±1000	10	75	84
PDQ10-Q48-D12-D	48	18~75	±12	0	±416	10	100	86
PDQ10-Q48-D15-D	48	18~75	±15	0	±333	10	100	86

Notes: 1. At full load, nominal input, 20 MHz bandwidth oscilloscope, with 10 µF tantalum and 1 µF ceramic capacitors on the output.
2. All specifications are measured at Ta=25°C, nominal input voltage, and rated output load unless otherwise specified.

PART NUMBER KEY



INPUT

parameter	conditions/description	min	typ	max	units
operating input voltage	24 Vdc input models	9	24	36	Vdc
	48 Vdc input models	18	48	75	Vdc
surge voltage	for maximum of 100 ms				
	24 Vdc input models			50	Vdc
	48 Vdc input models			100	Vdc
current	24 Vdc input models			1.4	A
	48 Vdc input models			0.7	A
under voltage shutdown	24 Vdc input models, power up		8.8		Vdc
	24 Vdc input models, power down		8.0		Vdc
	48 Vdc input models, power up		17		Vdc
	48 Vdc input models, power down		16		Vdc
remote on/off ¹	turn on (3.5~36 Vdc or open circuit) turn off (<1.2 Vdc)				
filter	LC type				
input reverse polarity protection	no				
input fuse	3 A time delay fuse for 24 Vdc input models (recommended)				
	1.5 A time delay fuse for 48 Vdc input models (recommended)				

Notes: 1. CMOS or open collector TTL, reference to -Vin.

OUTPUT

parameter	conditions/description	min	typ	max	units
maximum capacitive load	3.3 Vdc output models			3,300	μF
	5 Vdc output models			2,200	μF
	12 Vdc output models			1,000	μF
	15 Vdc output models			680	μF
	±5 Vdc output models			1,200	μF
	±12 Vdc output models			470	μF
	±15 Vdc output models			330	μF
voltage accuracy				±1.5	%
line regulation	from high line to low line			±0.5	%
load regulation	from 100% load to minimum load				
	single output models			±0.5	%
	dual output models			±1	%
voltage balance	dual output models			±1	%
cross regulation	load cross variation 25%/100% (dual output models)			±5	%
turn-on delay time, from input	from Vin, min to 10% Vo		2		ms
turn-on delay time, from on/off control	from Von/off to 10% Vo		2		ms
rise time	from 10% Vo to 90% Vo		1.5		ms
adjustability ²	see application notes		±10		%
switching frequency	at nominal Vin, full load		280		kHz
dynamic load response	75%-100% step load change		5		%
	error band (Vout) recovery time		500		μs
temperature coefficient			±0.03		%/°C

Note: 2. For single output models only.

PROTECTIONS

parameter	conditions/description	min	typ	max	units
over voltage protection	zener or TVS clamp				
	3.3 Vdc output models		3.9		Vdc
	5 Vdc output models (single and dual)		6.2		Vdc
	12 Vdc output models (single and dual)		15		Vdc
	15 Vdc output models (single and dual)		18		Vdc
over current protection		120			%
short circuit protection	continuous, automatic recovery				

SAFETY AND COMPLIANCE

parameter	conditions/description	min	typ	max	units
isolation voltage	input to output for 1 minute	1,500			Vdc
isolation resistance	input to output	1,000			MΩ
isolation capacitance	input to output		1,000		pF
conducted emissions	EN 55022 Class A & Class B (external circuit required, see Figure 3)				
MTBF	as per MIL-HDBK-217F, GB		1,300,000		hours
RoHS	2011/65/EU				

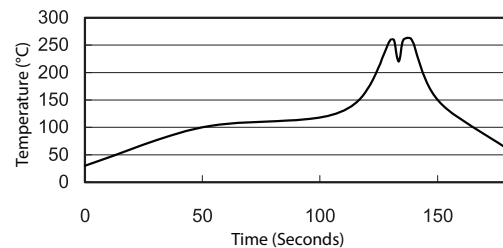
ENVIRONMENTAL

parameter	conditions/description	min	typ	max	units
operating temperature	see derating curves	-40		105	°C
storage temperature		-55		125	°C
operating humidity	non-condensing			95	%

SOLDERABILITY

parameter	conditions/description	min	typ	max	units
wave soldering	see wave soldering profile			260	°C

- Notes:
1. Soldering materials: Sn/Cu/Ni
 2. Ramp up rate during preheat: 1.4°C/s (from 50°C to 100°C)
 3. Soaking temperature: 0.5°C/s (from 100°C to 130°C), 60±20 seconds
 4. Peak temperature: 260°C, above 250°C for 3~6 seconds
 5. Ramp down rate during cooling: -10°C/s (from 260°C to 150°C)



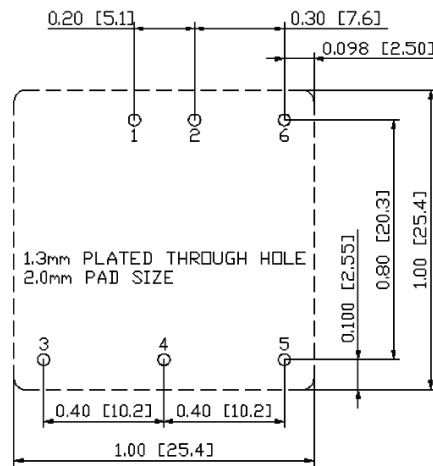
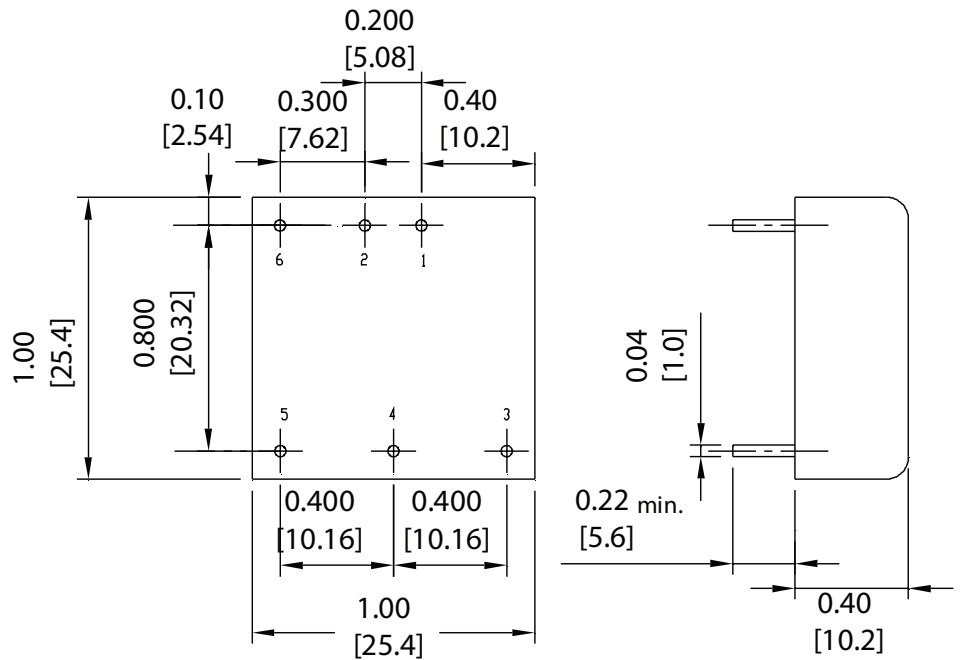
MECHANICAL

parameter	conditions/description	min	typ	max	units
dimensions	1.00 x 1.00 x 0.4 [25.4 x 25.4 x 10.2 mm]				inches
case material	black coated copper with non-conductive base				
weight			18		g

MECHANICAL DRAWING

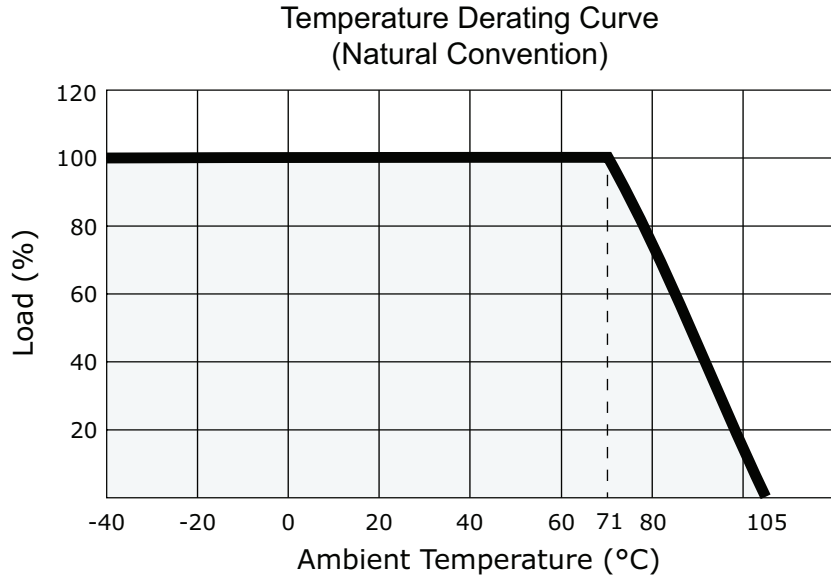
units: inches [mm]
 tolerance: X.XX ±0.02 [±0.5]
 X.XXX ±0.010 [±0.25]
 pin diameter tolerance: ±0.004[±0.1]

PIN CONNECTIONS		
PIN	Function	
	Single	Dual
1	+Vin	+Vin
2	-Vin	-Vin
3	+Vout	+Vout
4	Trim	Common
5	-Vout	-Vout
6	Remote	Remote



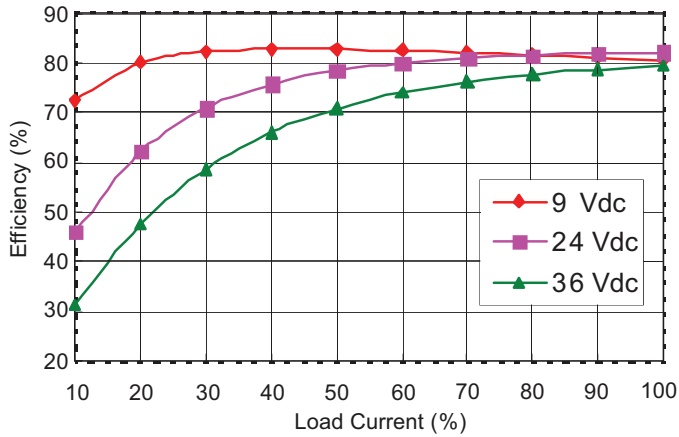
Recommended PCB Layout
Top View

DERATING CURVE

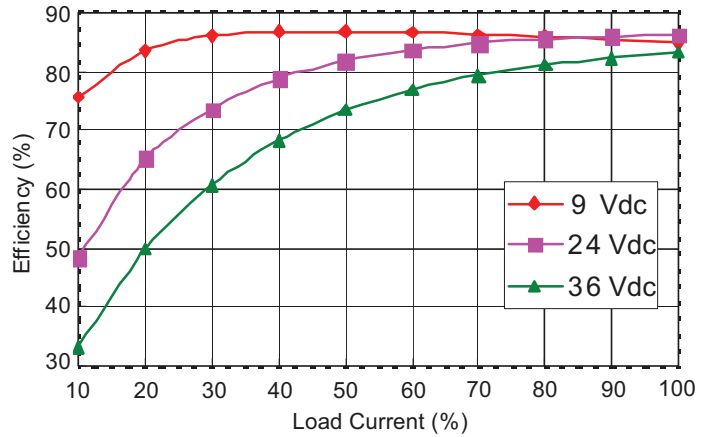


EFFICIENCY CURVES

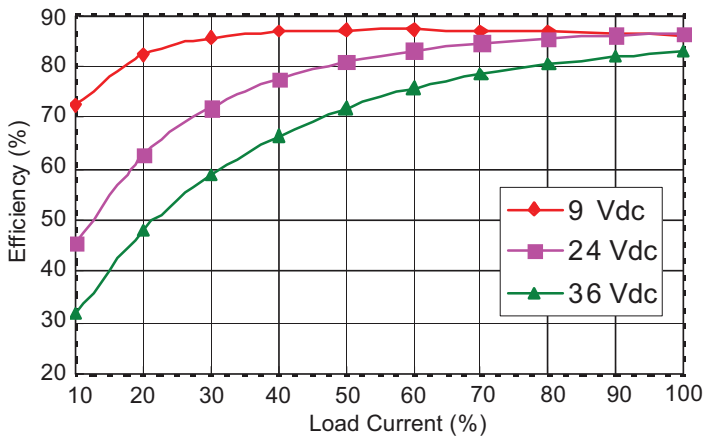
PDQ10-Q24-S3-D Efficiency Curve
(Efficiency vs. Line Voltage and Load Current)



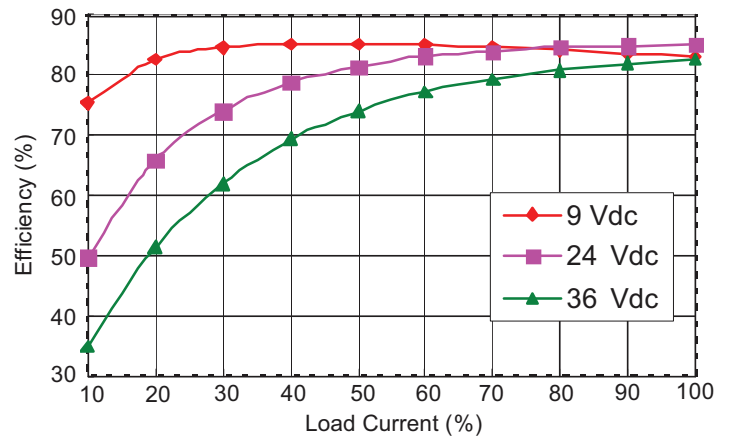
PDQ10-Q24-S12-D Efficiency Curve
(Efficiency vs. Line Voltage and Load Current)



PDQ10-Q24-S15-D Efficiency Curve
(Efficiency vs. Line Voltage and Load Current)

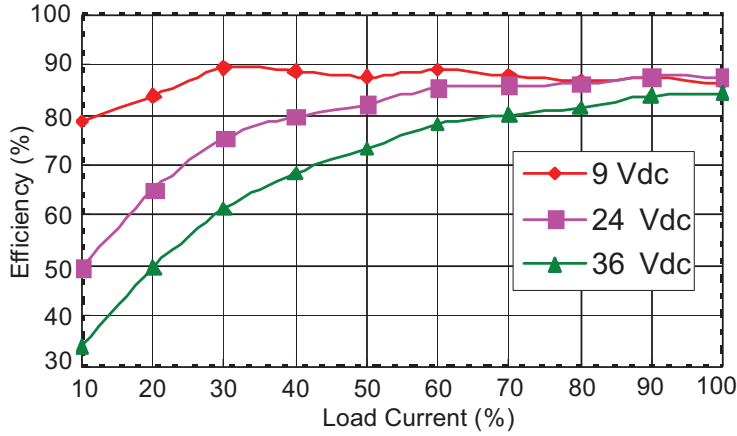


PDQ10-Q24-D5-D Efficiency Curve
(Efficiency vs. Line Voltage and Load Current)

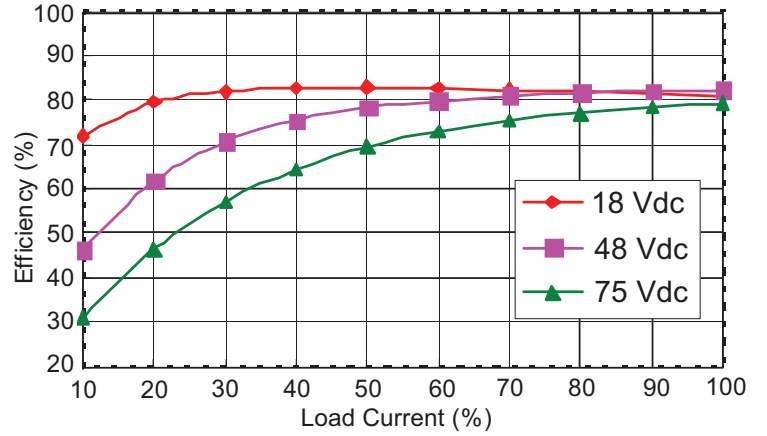


EFFICIENCY CURVES (CONTINUED)

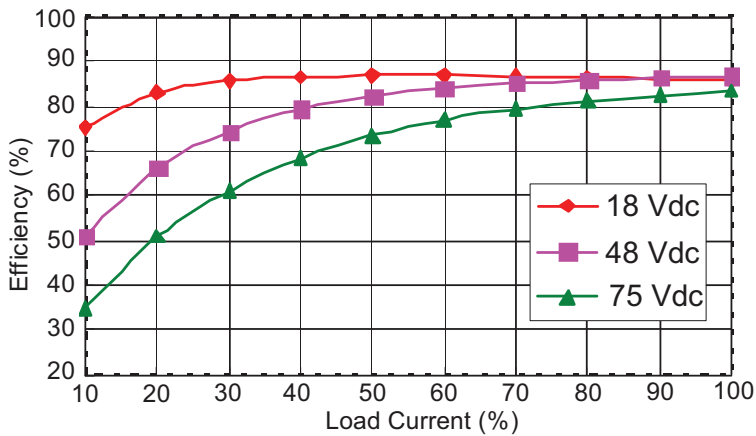
PDQ10-Q24-D15-D Efficiency Curve
(Efficiency vs. Line Voltage and Load Current)



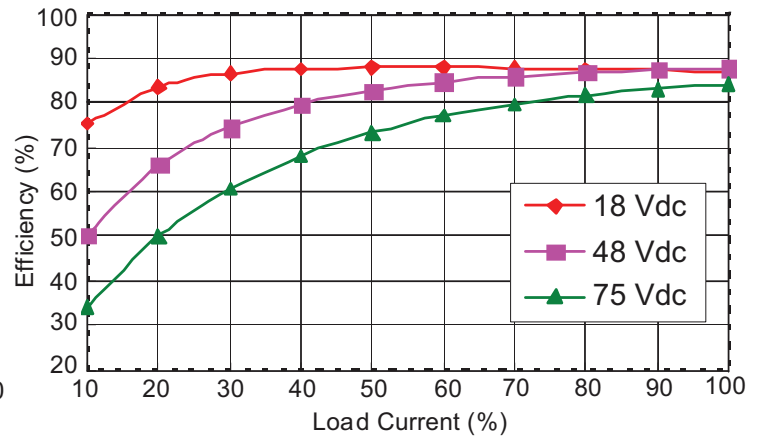
PDQ10-Q48-S3-D Efficiency Curve
(Efficiency vs. Line Voltage and Load Current)



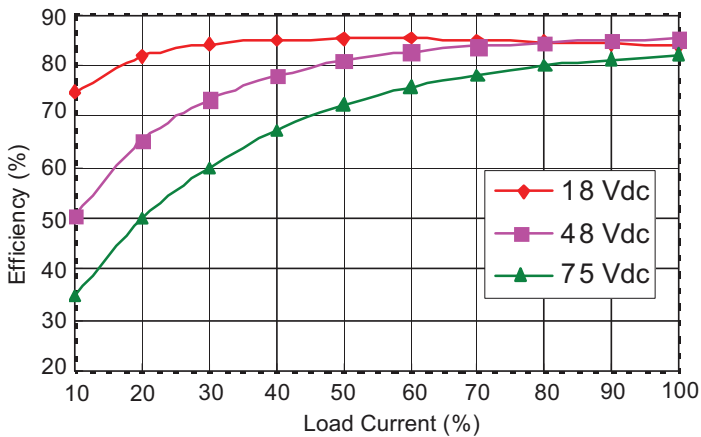
PDQ10-Q48-S12-D Efficiency Curve
(Efficiency vs. Line Voltage and Load Current)



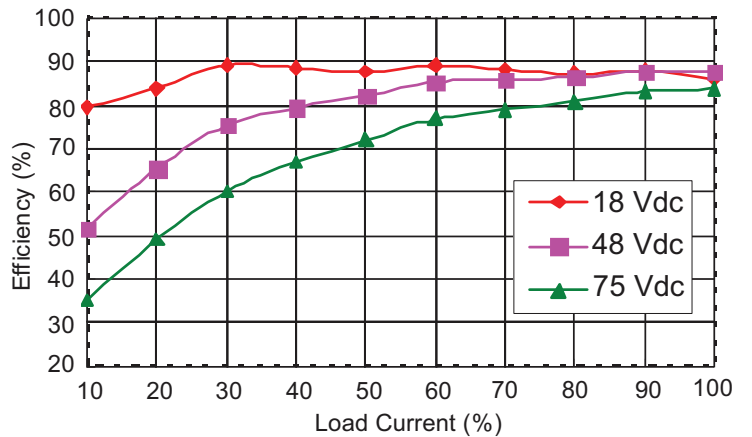
PDQ10-Q48-S15-D Efficiency Curve
(Efficiency vs. Line Voltage and Load Current)



PDQ10-Q48-D5-D Efficiency Curve
(Efficiency vs. Line Voltage and Load Current)



PDQ10-Q48-D15-D Efficiency Curve
(Efficiency vs. Line Voltage and Load Current)



TEST CONFIGURATIONS

Input Ripple Current & Output Noise

Figure 1 Measuring Input Ripple Current

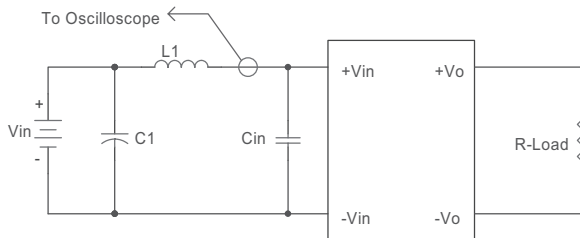


Table 1

L1	1 μ H
C1	6.8 μ F ceramic capacitor
Cin	none

Figure 2 Measuring Output Ripple And Noise

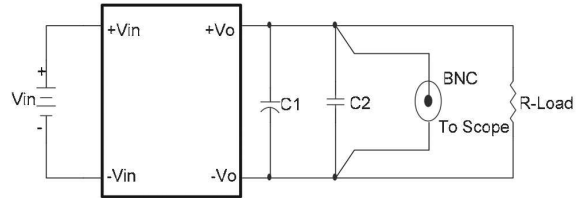


Table 2

C1	10 μ F tantalum capacitor
C2	1 μ F ceramic capacitor

EMC RECOMMENDED CIRCUIT

Test Condition

Input Voltage: Nominal

Output Load: Full Load

Figure 3 Conducted Emissions Test Circuit

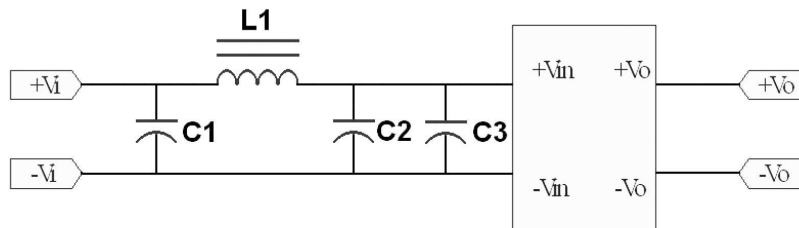


Table 3

EN55022 Class A Recommended External Circuit Components				
Input Voltage (Vdc)	C1	C2	C3	L1
24	NC	10 μ F / 50 V	10 μ F / 50 V	short
48	NC	4.7 μ F / 100 V	4.7 μ F / 100 V	short

Table 4

EN55022 Class B Recommended External Circuit Components				
Input Voltage (Vdc)	C1	C2	C3	L1
24	10 μ F / 50 V	NC	10 μ F / 50 V	3.3 μ H
48	4.7 μ F / 100 V	NC	4.7 μ F / 100 V	3.3 μ H

APPLICATION NOTES

Output Voltage Trimming

The output voltage can be adjusted (single outputs only) by using the trim pin and the use of either an external trim pot or the use of a single fixed resistor (see Figures below). If the trim function is not needed, leave the trim pin open.

Figure 4 Trim Adjustments Using A Trimpot

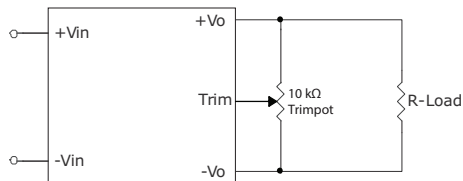


Figure 5 Trim Adjustments To Increase Output Voltage Using A Fixed Resistor

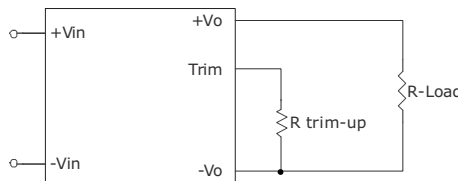
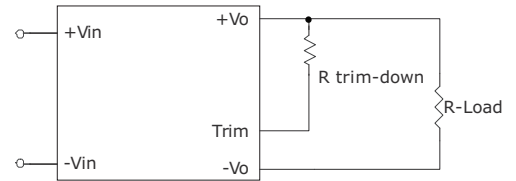


Figure 6 Trim Adjustments To Decrease Output Voltage Using A Fixed Resistor



Formula for Trim Resistor

$$R_{trim - up} = \left(\frac{V_r \times R1 \times (R2 + R3)}{(V_o - V_{o, nom}) \times R2} \right) - R_t \quad (\text{k}\Omega)$$

$$R_{trim - down} = R1 \times \left(\frac{V_r \times R1}{(V_{o, nom} - V_o) \times R2} - 1 \right) - R_t \quad (\text{k}\Omega)$$

Note: $R_{trim-up}$ is the external resistor in $\text{k}\Omega$
 $R_{trim-down}$ is the external resistor in $\text{k}\Omega$
 $V_{o, nom}$ is the nominal output voltage
 V_o is the desired output voltage
 $R1, R2, R3, R_t,$ and V_r are internal (see Table 5).

Output Voltage (Vdc)	R1 (kΩ)	R2 (kΩ)	R3 (kΩ)	Rt (kΩ)	Vr (V)
3.3	2.74	1.8	0.27	9.1	1.24
5	2.32	2.32	0	8.2	2.5
12	6.8	2.4	2.32	22	2.5
15	8.06	2.4	3.9	27	2.5

Table 5

REVISION HISTORY

rev.	description	date
1.0	initial release	07/12/2016

The revision history provided is for informational purposes only and is believed to be accurate.



Headquarters
20050 SW 112th Ave.
Tualatin, OR 97062
800.275.4899

Fax 503.612.2383
cui.com
techsupport@cui.com

CUI offers a two (2) year limited warranty. Complete warranty information is listed on our website.

CUI reserves the right to make changes to the product at any time without notice. Information provided by CUI is believed to be accurate and reliable. However, no responsibility is assumed by CUI for its use, nor for any infringements of patents or other rights of third parties which may result from its use.

CUI products are not authorized or warranted for use as critical components in equipment that requires an extremely high level of reliability. A critical component is any component of a life support device or system whose failure to perform can be reasonably expected to cause the failure of the life support device or system, or to affect its safety or effectiveness.