



Chipsmall Limited consists of a professional team with an average of over 10 year of expertise in the distribution of electronic components. Based in Hongkong, we have already established firm and mutual-benefit business relationships with customers from,Europe,America and south Asia,supplying obsolete and hard-to-find components to meet their specific needs.

With the principle of “Quality Parts,Customers Priority,Honest Operation,and Considerate Service”,our business mainly focus on the distribution of electronic components. Line cards we deal with include Microchip,ALPS,ROHM,Xilinx,Pulse,ON,Everlight and Freescale. Main products comprise IC,Modules,Potentiometer,IC Socket,Relay,Connector.Our parts cover such applications as commercial,industrial, and automotives areas.

We are looking forward to setting up business relationship with you and hope to provide you with the best service and solution. Let us make a better world for our industry!



Contact us

Tel: +86-755-8981 8866 Fax: +86-755-8427 6832

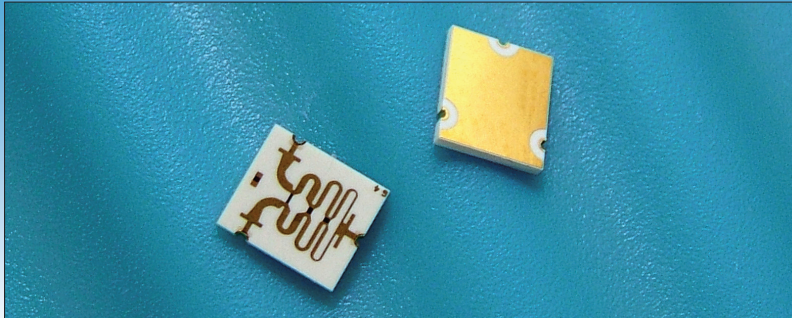
Email & Skype: info@chipsmall.com Web: www.chipsmall.com

Address: A1208, Overseas Decoration Building, #122 Zhenhua RD., Futian, Shenzhen, China



6 to 18 GHz Wilkinson Power Divider

Part number: PDW05758



Description

DLI introduces its new high frequency surface mountable Wilkinson Power Divider. The power divider utilizes DLI's high dielectric ceramic material which provides small size and minimal performance variation over temperature. The compact size, broad band performance and ease of integration make this power divider ideal anywhere board space is of a premium and quality signal splitting or combining is required.

Features

- Broad Band 6 to 18 GHz Performance
- 0.7dB Typical Insertion Loss
- 20dB Typical Isolation and Return Loss
- Excellent Phase and Amplitude Balance
- Compact Solder Surface Mount Package

Specification

Electrical

Frequency Range (GHz)

6 to 18

Nominal Power Splitting (dB)

3.0 (typical)

Nominal Phase Shift (degrees)

0.0 (typical)

Amplitude Balance (dB)

±0.025 max.

Phase Balance (degrees)

±3.0 (max.)

Excess Insertion Loss (dB)

0.7 (typical)

Return Loss (dB)

20 (typical)

Isolation (dB)

20 (typical)

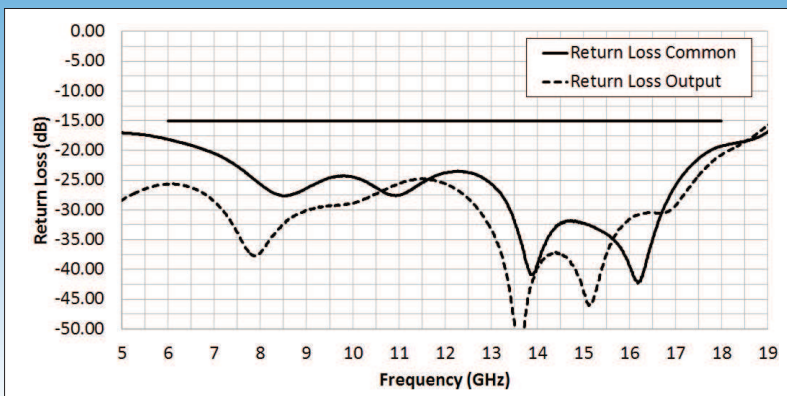
Input Power as a Splitter (W)²

5 (max.)

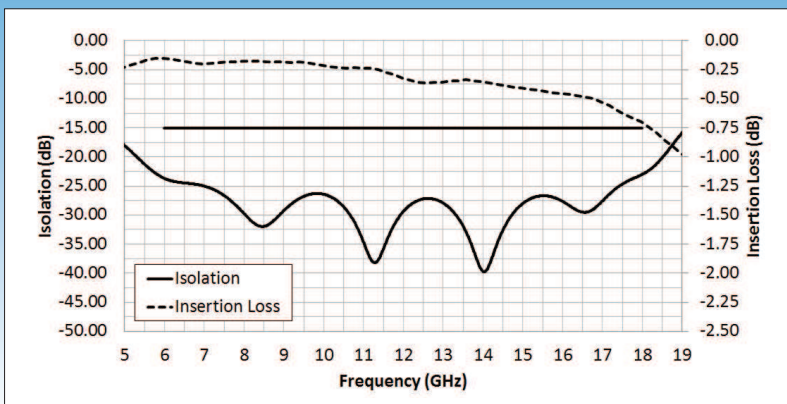
1) Electrical Specifications at 25°C; Over Temperature Performance TBD.

2) Load VSWR not to Exceed 1.20 : 1.00; Base Temperature not to Exceed 85°C.

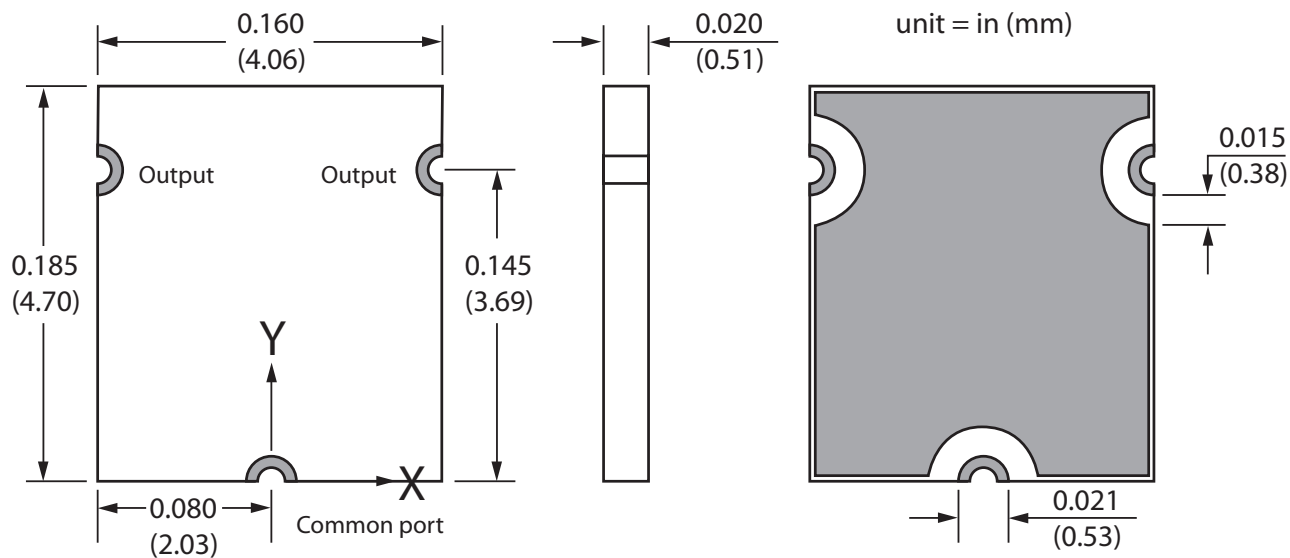
Typical Measured Return Loss



Typical Measured Isolation and Insertion Loss

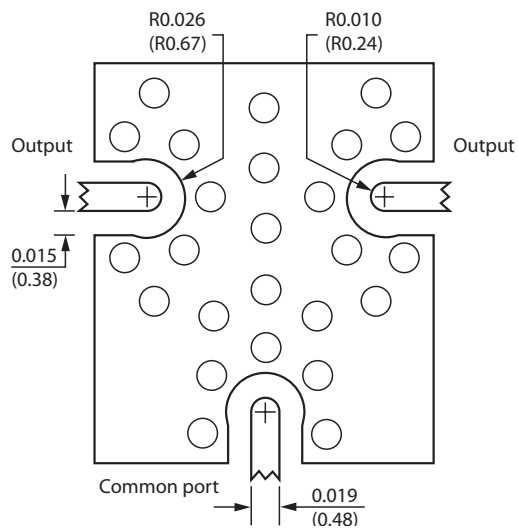


Physical Dimensions



Shaded areas are solderable metal

Recommended PCB Layout Dimensions



Recommended PCB Board Material : 10 mil RO4350

Qualifications



Dielectric Laboratories, Inc
2777 Route 20 East, Cazenovia,
NY 13035 USA



Phone: +1 315 655 8710
Fax: +1 315 655 0445
DLISales@knowles.com



Novacap
25111 Anza Drive, Valencia,
CA 91355 USA



Phone: +1 661 295 5920
Fax: +1 661 295 5928
NovacapSales@knowles.com



Syfer Technology Limited
Old Stoke Road, Arminghall, Norwich,
NR14 8SQ UK



Phone: +44 1603 723300
Fax: +44 1603 723301
SyferSales@knowles.com



Voltronics Corporation
2250 Northwood Drive, Salisbury,
MD 21801 USA



Phone: +1 410 749 2424
Fax: +1 443 260 2263
VoltronicsSales@knowles.com