



Chipsmall Limited consists of a professional team with an average of over 10 year of expertise in the distribution of electronic components. Based in Hongkong, we have already established firm and mutual-benefit business relationships with customers from,Europe,America and south Asia,supplying obsolete and hard-to-find components to meet their specific needs.

With the principle of “Quality Parts,Customers Priority,Honest Operation,and Considerate Service”,our business mainly focus on the distribution of electronic components. Line cards we deal with include Microchip,ALPS,ROHM,Xilinx,Pulse,ON,Everlight and Freescale. Main products comprise IC,Modules,Potentiometer,IC Socket,Relay,Connector.Our parts cover such applications as commercial,industrial, and automotives areas.

We are looking forward to setting up business relationship with you and hope to provide you with the best service and solution. Let us make a better world for our industry!



## Contact us

Tel: +86-755-8981 8866 Fax: +86-755-8427 6832

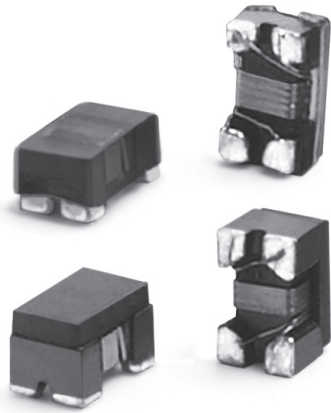
Email & Skype: info@chipsmall.com Web: www.chipsmall.com

Address: A1208, Overseas Decoration Building, #122 Zhenhua RD., Futian, Shenzhen, China



# 2-Line Chip Style Common Mode Chokes

ChipChoke™ CCMC Series



- Available in 0805 (2012) and 1206 (3216) size
- For USB2.0, 3.0 and other high speed differential signal lines (IEEE1394, LVDS)
- Suppression of common mode noise without attenuating the signal
- Large range of common mode impedance to fit with signal and noise level
- Magnetic shield versions available for lower Rdc and higher current features

## Electrical Specifications @ 25°C

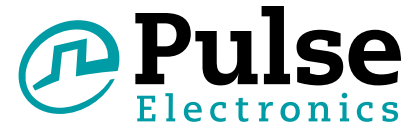
Part Number (25%)	Common Mode Impedance @ 100MHz (Ω)	DC Resistance (Ω MAX)	Rated Voltage (Vdc)	Rated Current (mA MAX)	Withstanding Voltage (Vdc)	Insulation Resistance (MΩ MIN)
<b>0805CCMCXTS - Magnetic Shield - 0805 Size</b>						
PE-0805CCMC670STS	67	0.25	50	400	125	10
PE-0805CCMC900STS	90	0.35	50	330	125	10
PE-0805CCMC121STS	120	0.30	50	370	125	10
PE-0805CCMC181STS	180	0.35	50	330	125	10
PE-0805CCMC261STS	260	0.40	50	300	125	10
PE-0805CCMC361STS	360	0.45	50	280	125	10
<b>1206CCMCXTS - Magnetic Shield - 1206 Size</b>						
PE-1206CCMC900STS	90	0.3	50	370	125	10
PE-1206CCMC161STS	160	0.40	50	340	125	10
PE-1206CCMC261STS	260	0.50	50	310	125	10
PE-1206CCMC601STS	600	0.80	50	260	125	10
PE-1206CCMC102STS	1000	1.00	50	230	125	10
PE-1206CCMC222STS	2200	1.20	50	200	125	10

### Notes:

1. These part numbers are lead free and RoHS compliant. No additional suffix or identifier is required.

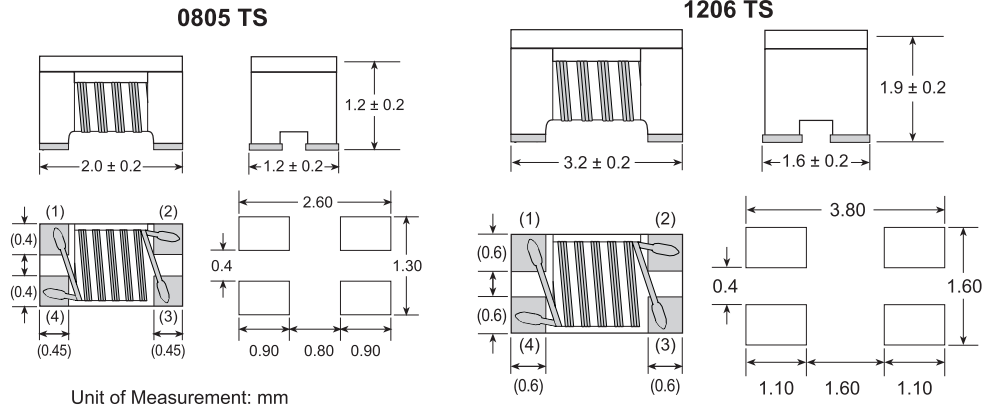
# 2-Line Chip Style Common Mode Chokes

ChipChoke™ CCMC Series



## Mechanicals

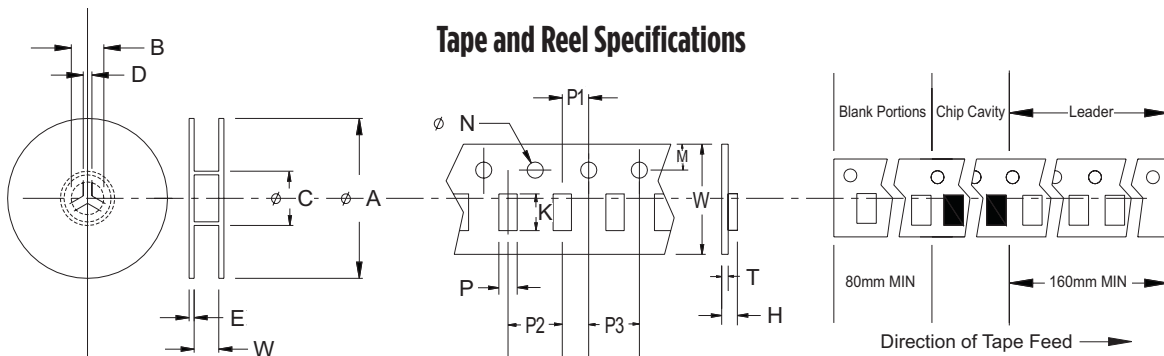
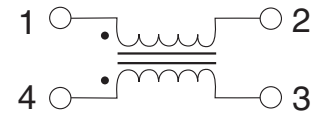
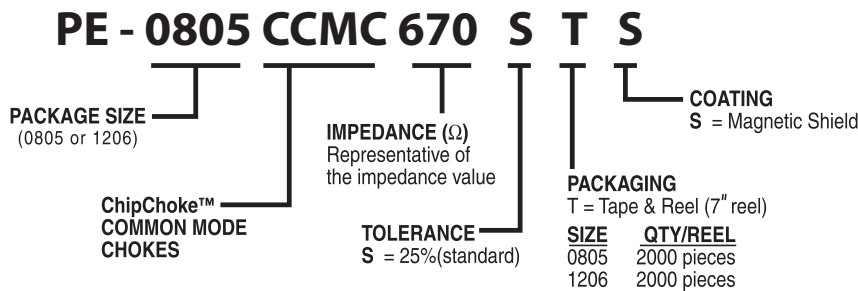
0805 TS, 1206 TS



## Part Number Legend

## Schematics

PE-0805CCMC670STH



# 2-Line Chip Style Common Mode Chokes

ChipChoke™ CCMC Series

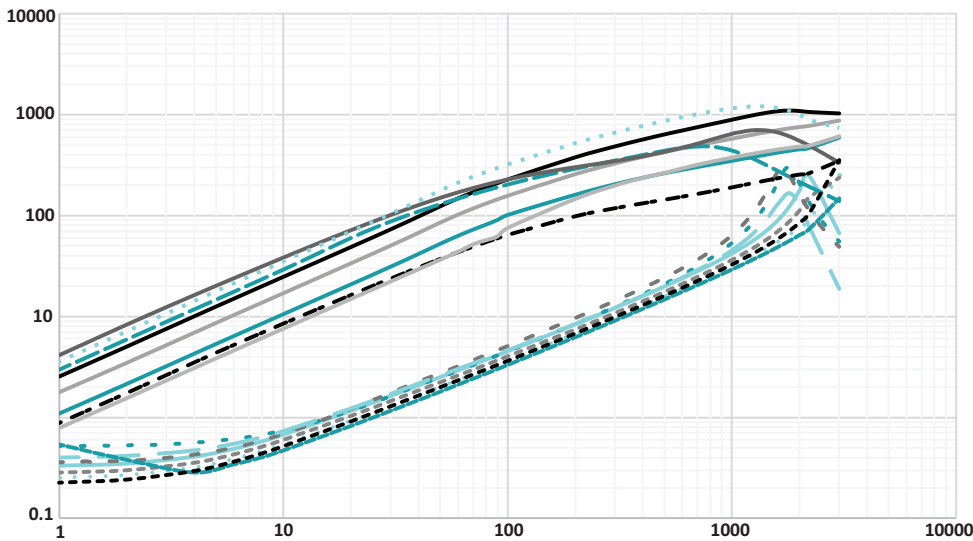


## Packaging Specifications

Series	Parts per Reel	Reel Dimensions (mm)					Tape Dimensions (mm)									
		A	B	C	D	E	W	P1	P2	P3	H	T	K	M	N	P
0805 TS	2000	178	21	75	2.0	2.5	8.0	2.0	4.0	4.0	1.30	0.3	2.25	1.75	1.5	1.42
1206 TS	2000	178	21	75	2.0	2.5	8.0	2.0	4.0	4.0	2.10	0.2	3.50	1.75	1.5	1.90

## Impedance vs Frequency

PE-0805CCMCXXXSTS



Common Mode	
ITEM	Part Number
· - - - ·	PE-0805CCM670STS
—	PE-0805CCM900STS
—	PE-0805CCM121STS
—	PE-0805CCM181STS
—	PE-0805CCM261STS
· · · · ·	PE-0805CCM361STS

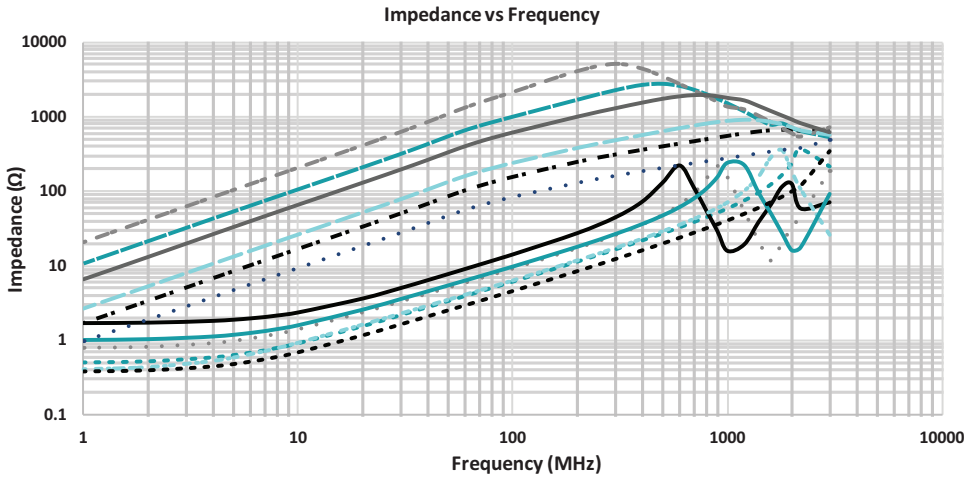
Differential Mode	
ITEM	Part Number
—	PE-0805CCM670STS
· - - - ·	PE-0805CCM900STS
· · · · ·	PE-0805CCM121STS
· - - - ·	PE-0805CCM181STS
—	PE-0805CCM261STS
—	PE-0805CCM361STS

# 2-Line Chip Style Common Mode Chokes

ChipChoke™ CCMC Series

## Impedance vs Frequency

PE-1206CCMCXXXSTS



### Common Mode

ITEM	Part Number
.....	PE-1206CCM900STS
- - - - -	PE-1206CCM161STS
-----	PE-1206CCM261STS
—————	PE-1206CCM601STS
—————	PE-1206CCM102STS
.....	PE-1206CCM222STS

### Differential Mode

ITEM	Part Number
.....	PE-1206CCM900STS
.....	PE-1206CCM161STS
.....	PE-1206CCM261STS
—————	PE-1206CCM601STS
.....	PE-1206CCM102STS
—————	PE-1206CCM222STS

## For More Information

**Pulse Worldwide Headquarters**  
12220 World Trade Drive  
San Diego, CA  
92128  
U.S.A.

Tel: 858 674 8100

**Pulse Europe**  
Zeppelinstrasse 15  
D-71083 Herrenberg  
Germany

Tel: 49 7032 7806 0  
Fax: 49 7032 7806 135

**Pulse China Headquarters**  
B402, Shenzhen Academy of  
Aerospace Technol-  
ogy Bldg.  
10th Kejinan Road  
High-Tech Zone  
Nanshan District  
Shenzhen, PR China  
518057

**Pulse North China**  
Room 2704/2705  
Super Ocean Finance  
Ctr.  
2067 Yan An Road  
West  
Shanghai 200336  
China

**Pulse South Asia**  
135 Joo Seng Road  
#03-02  
PM Industrial Bldg.  
Singapore 368363

Tel: 65 6287 8998  
Fax: 65 6287 8998

**Pulse North Asia**  
3F, No. 198  
Zhongyuan Road  
Zhongli City  
Taoyuan County 320  
Taiwan R. O. C.  
Tel: 886 3 4356768  
Fax: 886 3 4356823  
(Pulse)

Performance warranty of products offered on this data sheet is limited to the parameters specified. Data is subject to change without notice. Other brand and product names mentioned herein may be trademarks or registered trademarks of their respective owners. © Copyright, 2015. Pulse Electronics, Inc. All rights reserved.