



Chipsmall Limited consists of a professional team with an average of over 10 year of expertise in the distribution of electronic components. Based in Hongkong, we have already established firm and mutual-benefit business relationships with customers from,Europe,America and south Asia,supplying obsolete and hard-to-find components to meet their specific needs.

With the principle of "Quality Parts,Customers Priority,Honest Operation,and Considerate Service",our business mainly focus on the distribution of electronic components. Line cards we deal with include Microchip,ALPS,ROHM,Xilinx,Pulse,ON,Everlight and Freescale. Main products comprise IC,Modules,Potentiometer,IC Socket,Relay,Connector.Our parts cover such applications as commercial,industrial, and automotives areas.

We are looking forward to setting up business relationship with you and hope to provide you with the best service and solution. Let us make a better world for our industry!



## Contact us

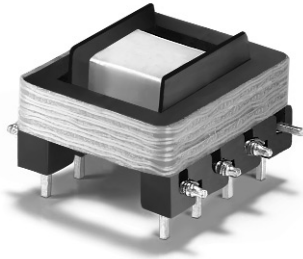
Tel: +86-755-8981 8866 Fax: +86-755-8427 6832



Email & Skype: info@chipsmall.com Web: www.chipsmall.com

Address: A1208, Overseas Decoration Building, #122 Zhenhua RD., Futian, Shenzhen, China



# FLYBACK TRANSFORMER FOR LT<sup>®</sup>1171<sup>™</sup>



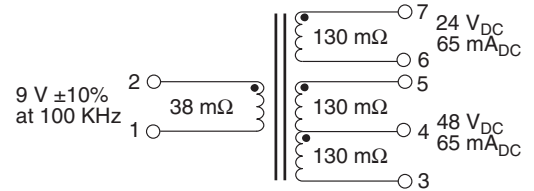
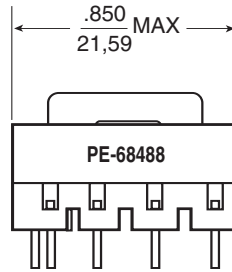
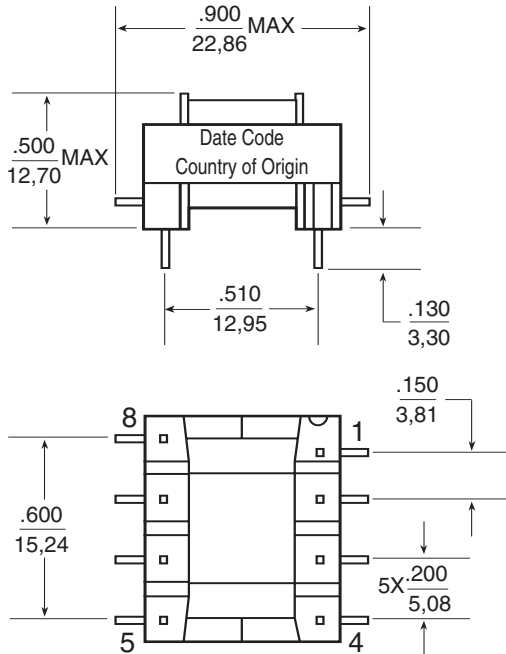
- 
 Designed for use with Linear Technology's LT<sup>®</sup>1171<sup>™</sup> in power supplies for Subscriber Line Interface Circuits
- 
 Turns ratio 1:1:1:1 with low leakage inductance  
 Performance verified by Linear Technology Corporation

## Electrical Specifications @ 25°C — Operating Temperature -30°C to +130°C

Part Number	Turns Ratio	Primary Inductance (μH)	Leakage Inductance (μH)	DCR (mΩ)	Hipot (V <sub>RMS</sub> )
PE-68488	1:1:1:1	36 ± 25%	0.30 MAX	(See schematic and note 1)	(See note 2)

### Mechanical

### Schematic



**FLYBACK TRANSFORMER**  
(approximately 10° C temperature rise)

#### NOTES:

- DCR's listed are nominal. Maximum DCR's are 20% over nominals.
- Primary (1-2) to Secondaries (6-7) and (3-5): 1000 Vrms, 2 seconds.  
Secondary (3-5) to Secondary (6-7): 200 Vrms, 2 seconds.
- Through-hole pins are .025 inches square.
- LT<sup>®</sup>1171<sup>™</sup> is a trademark of Linear Technology Corporation.

Weight .....7 grams  
Tray .....50/tray

Dimensions:  $\frac{\text{Inches}}{\text{mm}}$

Unless otherwise specified all tolerances are  $\pm \frac{.010}{0,25}$

### For More Information :

UNITED STATES (Worldwide)	UNITED KINGDOM (Northern Europe)	FRANCE (Southern Europe)	SINGAPORE (Southern Asia)	TAIWAN, R.O.C. (Northern Asia)	HONG KONG (China/Hong Kong)	DISTRIBUTOR
12220 World Trade Drive San Diego, CA 92128 U.S.A. http://www.pulseeng.com TEL: 858 674 8100 FAX: 858 674 8262	1 & 2 Huxley Road The Surrey Research Park Guildford, Surrey GU2 5RE United Kingdom TEL: 44 1483 401700 FAX: 44 1483 401701	Zone Industrielle F-39270 Orgelet France TEL: 33 3 84 35 04 04 FAX: 33 3 84 25 46 41	150 Kampong Ampat #07-01/02 KA Centre Singapore 368324 TEL: 65 6287 8998 FAX: 65 6280 0080	3F-4, No. 81, Sec. 1 HsinTai Wu Road Hsi-Chih, Taipei Hsien Taiwan, R.O.C. Tel: 886 2 2698 0228 FAX: 886 2 2698 0948	9/F, Phase 2, Tai Sang Shatin Warehouse Centre 6 Wong Chuk Yeung Street Fotan, Shatin, Hong Kong TEL: 852 2788 6588 FAX: 852 2776 1055	

Performance warranty of products offered on this data sheet is limited to the parameters specified. Data is subject to change without notice. Other brand and product names mentioned herein may be trademarks or registered trademarks of their respective owners.