



Chipsmall Limited consists of a professional team with an average of over 10 year of expertise in the distribution of electronic components. Based in Hongkong, we have already established firm and mutual-benefit business relationships with customers from,Europe,America and south Asia,supplying obsolete and hard-to-find components to meet their specific needs.

With the principle of “Quality Parts,Customers Priority,Honest Operation,and Considerate Service”,our business mainly focus on the distribution of electronic components. Line cards we deal with include Microchip,ALPS,ROHM,Xilinx,Pulse,ON,Everlight and Freescale. Main products comprise IC,Modules,Potentiometer,IC Socket,Relay,Connector.Our parts cover such applications as commercial,industrial, and automotives areas.

We are looking forward to setting up business relationship with you and hope to provide you with the best service and solution. Let us make a better world for our industry!



## Contact us

Tel: +86-755-8981 8866 Fax: +86-755-8427 6832

Email & Skype: info@chipsmall.com Web: www.chipsmall.com

Address: A1208, Overseas Decoration Building, #122 Zhenhua RD., Futian, Shenzhen, China



**POWER DISCRETES**
**Description**

Quick reference data

$$V_R = 800 \text{ \& } 1000V$$

$$I_F = 1.8A$$

$$t_{rr} = 300nS$$

$$I_R = 1\mu A$$

**Features**

- ◆ Low reverse recovery time
- ◆ Glass passivated for hermetic sealing
- ◆ Low switching losses
- ◆ Soft, non-snap off, recovery characteristic
- ◆ Avalanche capability

**Absolute Maximum Ratings**

Electrical specifications @  $T_A = 25^\circ C$  unless otherwise specified.

	Symbol	PF8	PF0	Units
Working Reverse Voltage	$V_{RWM}$	800	1000	V
Repetitive Reverse Voltage	$V_{RRM}$	800	1000	V
Surge Reverse Voltage	$V_{RSM}$	900	1100	V
Average Forward Current @ $55^\circ C$ , lead length 0.375"	$I_{F(AV)}$	1.8		A
Non-Repetitive Surge Current ( $t_p = 8.3mS$ @ $V_R$ & $T_{JMAX}$ )	$I_{FSM}$	50		A
Storage Temperature Range	$T_{STG}$	-55 to +175		$^\circ C$

**POWER DISCRETES**
**Electrical Specifications**

 Electrical specifications @  $T_A = 25^\circ\text{C}$  unless otherwise specified.

	Symbol	PF8/PF0	Units
Average Forward Current max. (pcb mounted)	$I_{F(AV)}$	0.85	A
Average Forward Current max. L = 10mm	$I_{F(AV)}$	1.8	A
Forward Voltage Drop max. @ $I_F = 1.5\text{A}$ , $T_J = 25^\circ\text{C}$	$V_F$	1.35	V
Reverse Current max. @ $V_{RWM}$ , $T_J = 25^\circ\text{C}$ @ $V_{RWM}$ , $T_J = 100^\circ\text{C}$	$I_R$ $I_R$	1 15	$\mu\text{A}$
Reverse Recovery Time max. 0.5A $I_F$ to 1.0A $I_{RM}$ recovers to 0.25mA $I_{RM(REC)}$	trr	300	nS
Junction Capacitance typ. @ $V_R = 5\text{V}$ , $f = 1\text{MHz}$	Cj	18	pF

**Thermal Characteristics**

	Symbol	PF8/PF0	Units
Thermal Resistance-Junction to Lead Lead length = 0" Lead length = 0.375"	$R_{\theta JL}$	19 47	$^\circ\text{C/W}$

**POWER DISCRETES**

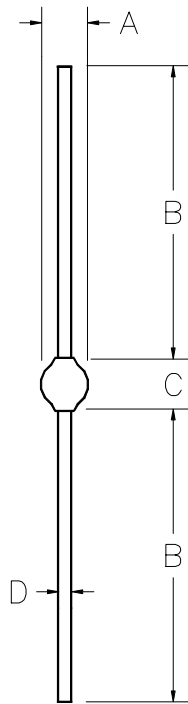
**Ordering Information**

Part Number	Description
PF8/PF0	Axial leaded hermetically sealed <sup>(1)</sup>

Note:

(1) Available in bulk and tape and reel packaging. Please consult factory for quantities.

**Outline Drawing**



Dimensions					
DIM <sup>N</sup>	Inches		Millimeters		Note
	MIN	MAX	MIN	MAX	
A	-	0.150	-	3.81	-
B	1.014	-	26	-	-
C	-	0.180	-	4.57	-
D	-	0.032	-	0.82	-

Weight = 369mg

**Contact Information**

Semtech Corporation  
 Power Discrettes Products Division  
 200 Flynn Road, Camarillo, CA 93012  
 Phone: (805)498-2111 FAX (805)498-3804