



Chipsmall Limited consists of a professional team with an average of over 10 year of expertise in the distribution of electronic components. Based in Hongkong, we have already established firm and mutual-benefit business relationships with customers from,Europe,America and south Asia,supplying obsolete and hard-to-find components to meet their specific needs.

With the principle of "Quality Parts,Customers Priority,Honest Operation,and Considerate Service",our business mainly focus on the distribution of electronic components. Line cards we deal with include Microchip,ALPS,ROHM,Xilinx,Pulse,ON,Everlight and Freescale. Main products comprise IC,Modules,Potentiometer,IC Socket,Relay,Connector.Our parts cover such applications as commercial,industrial, and automotives areas.

We are looking forward to setting up business relationship with you and hope to provide you with the best service and solution. Let us make a better world for our industry!



Contact us

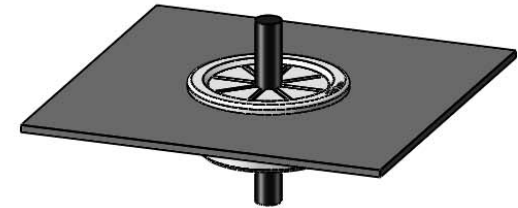
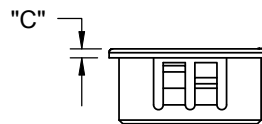
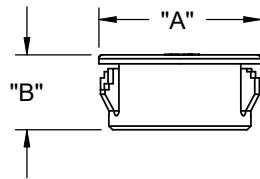
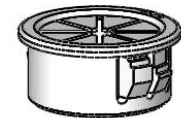
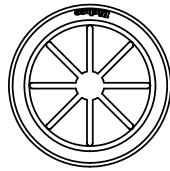
Tel: +86-755-8981 8866 Fax: +86-755-8427 6832

Email & Skype: info@chipsmall.com Web: www.chipsmall.com

Address: A1208, Overseas Decoration Building, #122 Zhenhua RD., Futian, Shenzhen, China



PART NO.	MAX. PANEL THICKNESS	HOLE DIA.	TO ACCOMMODATE BUNDLE DIA.	HEAD DIAMETER "A"±.020	OVERALL HEIGHT "B"±.010	"C"
PGSD-1	.062 [1.57]	.500±.002 [12.7±0.05]	.312 [7.9]	.600 [15.2]	.250 [6.4]	.063 [1.6]
PGSD-2		.625±.002 [15.9±0.05]	.437 [11.1]	.729 [18.5]		
PGSD-3		.750±.002 [19.05±0.05]	.500 [12.7]	.844 [21.4]		
PGSD-4		.875±.002 [22.2±0.05]	.560 [14.2]	.937 [23.8]		
PGSD-5	.125 [3.2]	.500±.002 [12.7±0.05]	.312 [7.9]	.600 [15.2]	.385 [9.8]	.041 [1]
PGSD-6		.625±.002 [15.9±0.05]	.437 [11.1]	.729 [18.5]	.406 [10.3]	.063 [1.6]
PGSD-7		.750±.002 [19.05±0.05]	.500 [12.7]	.844 [21.4]	.390 [9.9]	.047 [1.2]
PGSD-8		.875±.002 [22.2±0.05]	.560 [14.2]	.937 [23.8]	.453 [11.5]	.063 [1.6]
PGSD-9		1.000±.002 [25.4±0.05]	.750 [19.1]	1.063 [27]		
PGSD-10		1.375±.002 [34.9±0.05]	1.000 [25.4]	1.490 [37.8]		
PGSD-11			1.500±.002 [38.1±0.05]	1.062 [27]	1.609 [40.9]	.450 [11.43]



NOTES:

1. MATERIAL: NYLON 6/6 UL 94 V-2 (RMS-01)
2. COLOR: BLACK.
COLOR WHITE AVAILABLE BY SPECIAL ORDER ONLY.
3. PARTS MAY APPEAR WITH ONE OR TWO LOCKING MECHANISMS PER SIDE.
4. ALTERNATE UNITS FOR REFERENCE ONLY.

B			SEE CO 200434 FOR CHANGES	SK	09/11/09	TITLE: WEBBED SNAP IN GROMMET						DWG IN IN [MM]	
A			RELEASED FOR PRODUCTION	SK	02/24/09	CREATED USING SOLIDWORKS	FILE #: PGSD	DWN: S.K.	APP: S.K.	FINAL			
REV.			DESCRIPTION	ENGR.	DATE	TOLERANCES UNLESS NOTED XX=±.010 .XXX=±.005 FRAC.=±1/64 ANG.=±1°	SHEET: 1 OF 1	SHEET SIZE: A	DT: 03/05/08	CHKD: S.J.	PART #		PRINT TYPE
						RE: RICHCO, INC. --	RICHCO, INC. ENG@RICHCO-INC.COM (773) 539-4060			SEE TABLE		CA	