



Chipsmall Limited consists of a professional team with an average of over 10 year of expertise in the distribution of electronic components. Based in Hongkong, we have already established firm and mutual-benefit business relationships with customers from,Europe,America and south Asia,supplying obsolete and hard-to-find components to meet their specific needs.

With the principle of “Quality Parts,Customers Priority,Honest Operation,and Considerate Service”,our business mainly focus on the distribution of electronic components. Line cards we deal with include Microchip,ALPS,ROHM,Xilinx,Pulse,ON,Everlight and Freescale. Main products comprise IC,Modules,Potentiometer,IC Socket,Relay,Connector.Our parts cover such applications as commercial,industrial, and automotives areas.

We are looking forward to setting up business relationship with you and hope to provide you with the best service and solution. Let us make a better world for our industry!



## Contact us

Tel: +86-755-8981 8866 Fax: +86-755-8427 6832

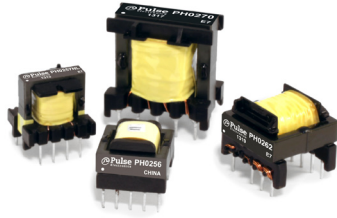
Email & Skype: info@chipsmall.com Web: www.chipsmall.com

Address: A1208, Overseas Decoration Building, #122 Zhenhua RD., Futian, Shenzhen, China



# Switch Mode Transformer for AC/DC offline Applications

EE16H, EE16V, EF20H and EF25V Platforms



- Ⓢ AC/DC offline Switch Mode Transformer
- Ⓢ Hipot up to 3000Vrms
- Ⓢ Flyback Topology
- Ⓢ Operational Insulation
- Ⓢ Matched to Tiny Switch and Top Switch chipsets
- Ⓢ Custom Design Available: <60W with up to Reinforced Insulation

Electrical Specifications @ 25C- Operating Temperature -40C to +125C					
PH0256NL	Pri. Inductance	(3-2)	2800 $\mu$ H $\pm$ 15%		<p>FLYBACK TRANSFORMER</p>
	Lk. Inductance w/	(4,5,8,10)	65 $\mu$ H max shorted		
	DCR	(3-2) (10-8) (4-5)	3.3	$\Omega$ Max	
			0.02		
			0.13		
	Hi-Pot	Pri-Sec	500 Vrms		
	K1 Factor				
PI IC's	TNY264/274				
PH0259NL	Pri. Inductance	(4-1)	1800 $\mu$ H $\pm$ 15%		<p>FLYBACK TRANSFORMER</p>
	Lk. Inductance w/	(5,6,7,8)	60 $\mu$ H max shorted		
	DCR	(4,1) (5-6) (8-6)	2.556	$\Omega$ Max	
			0.0168		
			0.174		
	Hi-Pot	Pri-Sec	500 Vrms		
K1 Factor				7200	
PI IC's	TNY266/274				
PH0262NL	Pri. Inductance	(3-1)	790 $\mu$ H $\pm$ 10%		<p>SCHEMATIC FLYBACK TRANSFORMER</p>
	Lk. Inductance w/	(3-1) (4,5,9,10)	30 $\mu$ H max shorted		
	DCR	(3-1) (4-5) (10-9)	1.085	$\Omega$ Max	
			0.015		
			0.026		
	Hi-Pot	Pri-Sec			
	K1 Factor				
PI IC's	TNY279				

# Switch Mode Transformer for AC/DC offline Applications

EE16H, EE16V, EF20H and EF25V Platforms

PH0270NL	Pri. Inductance	(3-1)	876 $\mu\text{H} \pm 10\%$		<p>FLYBACK TRANSFORMER</p>	
	Lk. Inductance w/	(3-1) (4,5,6,7,9,10)	28 $\mu\text{H}$ max shorted			
	DCR	(3-1)	0.5	$\Omega$ Max		
		(4-5)	0.026			
		(9-10)	0.025			
	Hi-Pot	Pri-Sec	1500 Vrms			
	K1 Factor	2900				
	PI IC's	TOP244/245/246/254/264				

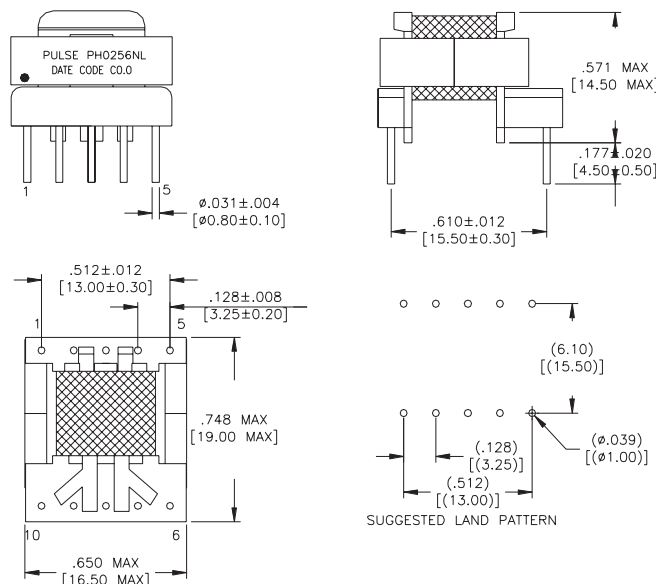
## Notes:

1. The temperature of the component (ambient plus temperature rise) must be within the stated operating temperature range.
2. The above transformers and inductors have been tested and approved by Pulse's power IC partners and are sited in the appropriate datasheet or evaluation board documentation at these companies. To determine which IC and IC partners are matched with the above Pulse part numbers please consult the IC Cross Reference on the Pulse website.
3. For flyback topology applications, it is necessary to ensure that the transformer will not saturate in the application. The peak flux density (Bpk) should remain below 2700Gauss. To calculate the peak density, use the following formula:  $B_{pk} \text{ (Gauss)} = K1\_Factor * I_{pk} \text{ (A)}$

4. In high volt-sec applications, it is important to calculate the core loss of the transformer. Approximate transformer core loss can be calculated as:  
 $CoreLoss \text{ (W)} = 3.6E-14 * (Freq\_kHz) * (\Delta B\_Gauss)$  where  $\Delta B$  can be calculated as:  
 For Flyback Topology:  $\Delta B = K1\_Factor * \Delta(A)$   
 For Forward Topology:  $\Delta B = K1\_Factor * Volt\text{-}\mu\text{sec}$
5. The "NL" suffix indicates an RoHS-compliant part number. Non-NL suffixed parts are not necessarily RoHS compliant, but are electrically and mechanically equivalent to NL versions. If a part number does not have the "NL" suffix, but an RoHS compliant version is required, please contact Pulse for availability.

## Mechanical

### PH0256NL



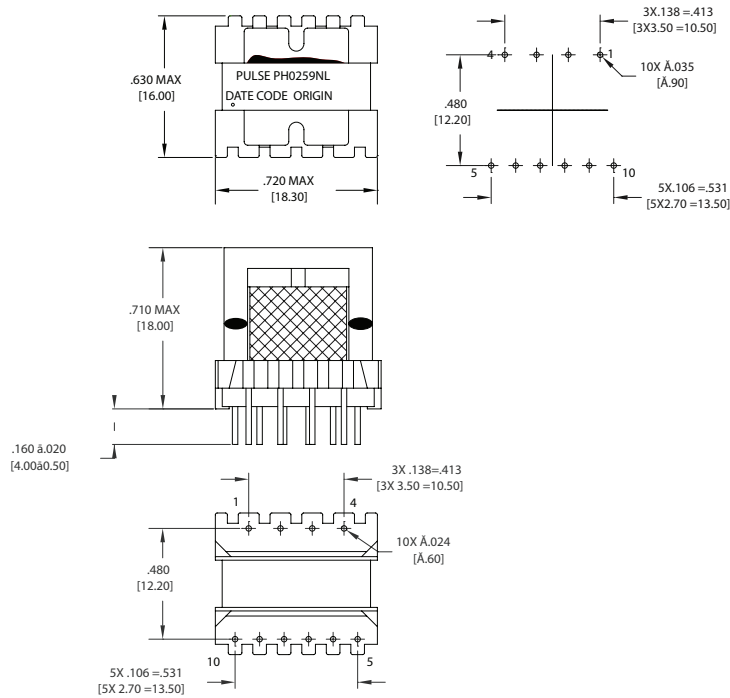


# Switch Mode Transformer for AC/DC offline Applications

EE16H, EE16V, EF20H and EF25V Platforms

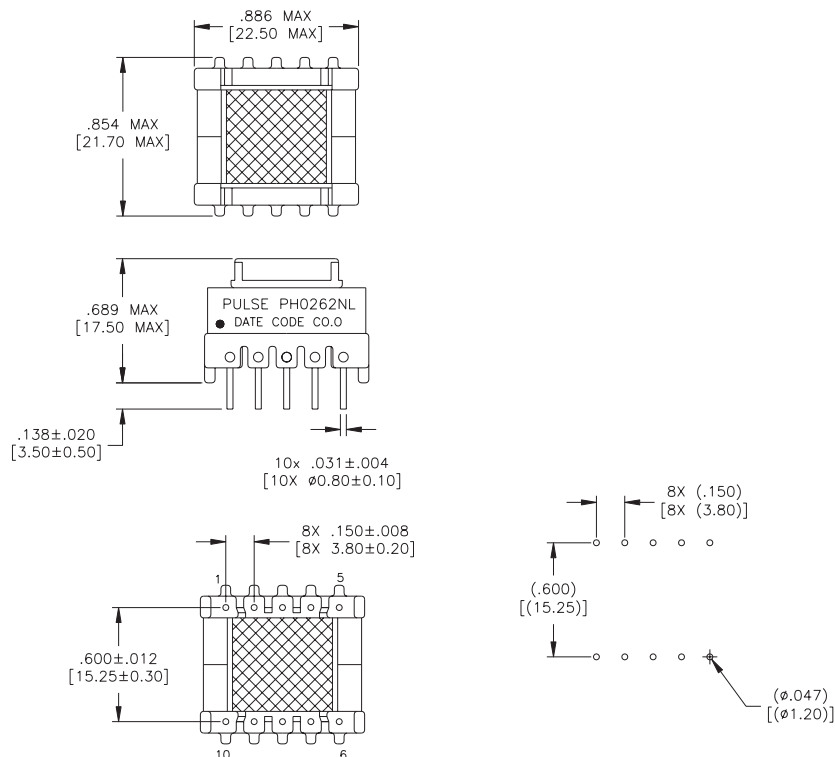
## Mechanical

### PH0259NL



## Mechanical

### PH0262NL



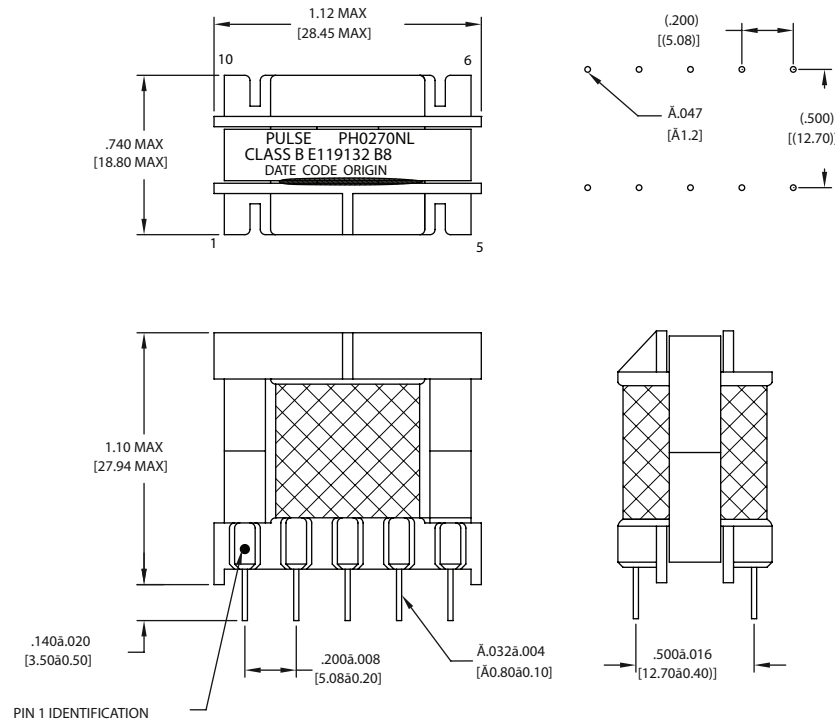
# Switch Mode Transformer for AC/DC offline Applications

EE16H, EE16V, EF20H and EF25V Platforms



## Mechanical

### PH0270NL



## For More Information

### Pulse Worldwide Headquarters

15255 Innovation Drive Ste 100  
San Diego, CA 92128  
U.S.A.

### Pulse Europe

Pulse Electronics GmbH  
Am Rottland 12  
58540 Meinerzhagen  
Germany

### Pulse China Headquarters

Pulse Electronics (Shenzhen) CO., LTD  
D708, Shenzhen Academy of  
Aerospace Technology,  
The 10th Keji South Road,  
Nanshan District, Shenzhen, P.R.  
China 518057

### Pulse North China

Room 2704/2705  
Super Ocean Finance Ctr.  
2067 Yan An Road West  
Shanghai 200336  
China

### Pulse South Asia

3 Fraser Street  
0428 DUO Tower  
Singapore 189352

### Pulse North Asia

1F, No.111  
Xiyuan Road  
Zhongli District  
Taoyuan City 32057  
Taiwan (R.O.C)

Tel: 858 674 8100  
Fax: 858 674 8262

Tel: 49 2354 777 100  
Fax: 49 2354 777 168

Tel: 86 755 33966678  
Fax: 86 755 33966700

Tel: 86 21 62787060  
Fax: 86 2162786973

Tel: 65 6287 8998  
Fax: 65 6280 0080

Tel: 886 3 4356768  
Fax: 886 3 4356820

Performance warranty of products offered on this data sheet is limited to the parameters specified. Data is subject to change without notice. Other brand and product names mentioned herein may be trademarks or registered trademarks of their respective owners. © Copyright, 2018. Pulse Electronics, Inc. All rights reserved.