



Chipsmall Limited consists of a professional team with an average of over 10 year of expertise in the distribution of electronic components. Based in Hongkong, we have already established firm and mutual-benefit business relationships with customers from,Europe,America and south Asia,supplying obsolete and hard-to-find components to meet their specific needs.

With the principle of “Quality Parts,Customers Priority,Honest Operation,and Considerate Service”,our business mainly focus on the distribution of electronic components. Line cards we deal with include Microchip,ALPS,ROHM,Xilinx,Pulse,ON,Everlight and Freescale. Main products comprise IC,Modules,Potentiometer,IC Socket,Relay,Connector.Our parts cover such applications as commercial,industrial, and automotives areas.

We are looking forward to setting up business relationship with you and hope to provide you with the best service and solution. Let us make a better world for our industry!



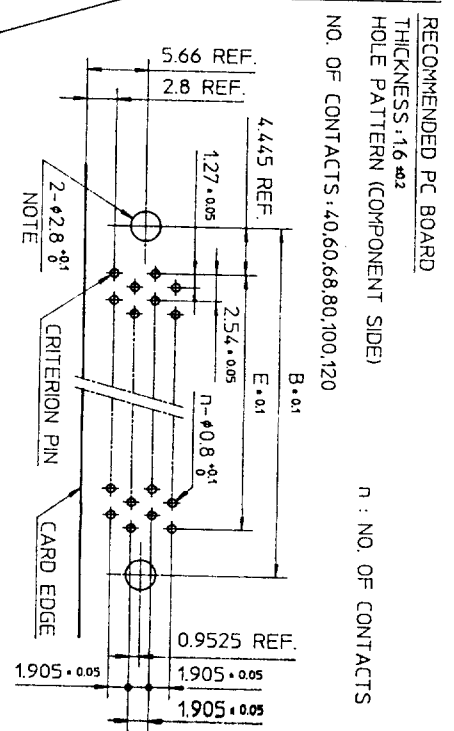
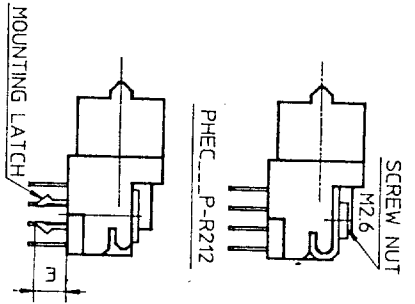
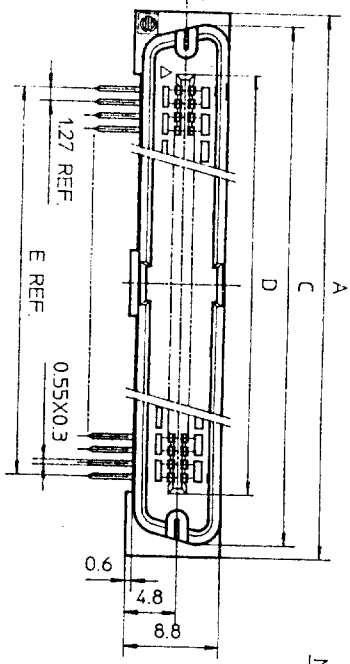
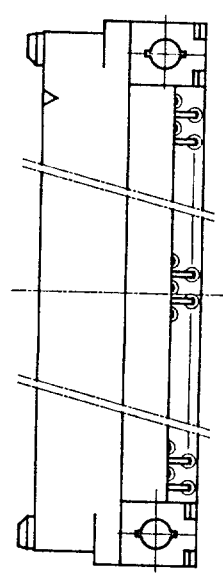
## Contact us

Tel: +86-755-8981 8866 Fax: +86-755-8427 6832

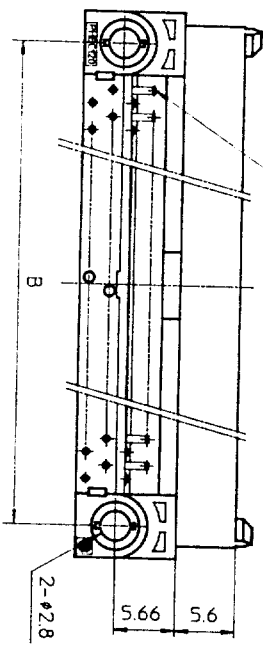
Email & Skype: info@chipsmall.com Web: www.chipsmall.com

Address: A1208, Overseas Decoration Building, #122 Zhenhua RD., Futian, Shenzhen, China

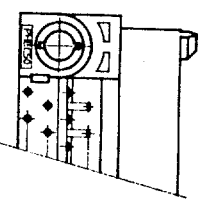




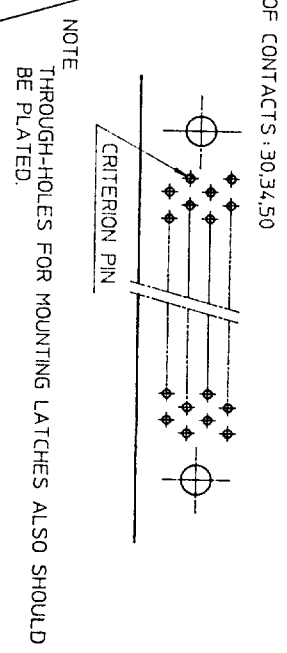
NO. OF CONTACTS: 40, 60, 68, 80, 100, 120  
CRITERION PIN



NO. OF CONTACTS: 30, 34, 50



PHEC...P-R210



TOLERANCES UNLESS OTHERWISE SPECIFIED: ±0.3

CAT. NO.	NO. OF CONTACTS (MATING SIDE)	DIMENSIONS				
		A	B	C	D	E
PHEC30P-R21	15/ROW X 2 ROWS	32.67	26.67	30.3	20.42	17.78
PHEC34P-R21	17/ROW X 2 ROWS	35.21	29.21	32.84	22.96	20.32
PHEC40P-R21	20/ROW X 2 ROWS	39.02	33.02	36.65	26.77	24.13
PHEC50P-R21	25/ROW X 2 ROWS	45.37	39.37	43	33.12	30.48
PHEC60P-R21	30/ROW X 2 ROWS	51.72	45.72	49.35	39.47	36.83
PHEC68P-R21	34/ROW X 2 ROWS	56.8	50.8	54.43	44.55	41.91
PHEC80P-R21	40/ROW X 2 ROWS	64.42	58.42	62.05	52.17	49.53
PHEC100P-R21	50/ROW X 2 ROWS	77.12	71.12	74.75	64.87	62.23
PHEC120P-R21	60/ROW X 2 ROWS	89.82	83.82	87.45	77.57	74.93

MATERIAL BODY : NYLON RESIN GLASS REINFORCED (UL94V-0)  
COLOR : BLACK  
LOCATOR : PBT RESIN GLASS REINFORCED (UL94V-0)  
COLOR : BLACK  
CONTACT : COPPER ALLOY  
MOUNTING LATCH : PHOSPHOR BRONZE  
SOLDER PLATED  
SCREW NUT : STEEL  
NICKEL PLATED

CONTACT PLATING TABLE (THICKNESS: μm)

CONTACT AREA	REMAINDER
GOLD 0.25 MIN. OVER NICKEL 3Z	SOLDER OVER NICKEL

DRAWING NO. JSC 90736

PRINTED CIRCUIT CONNECTOR

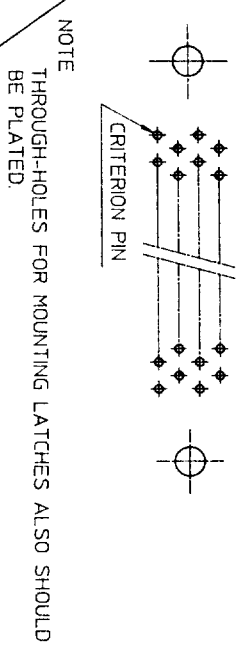
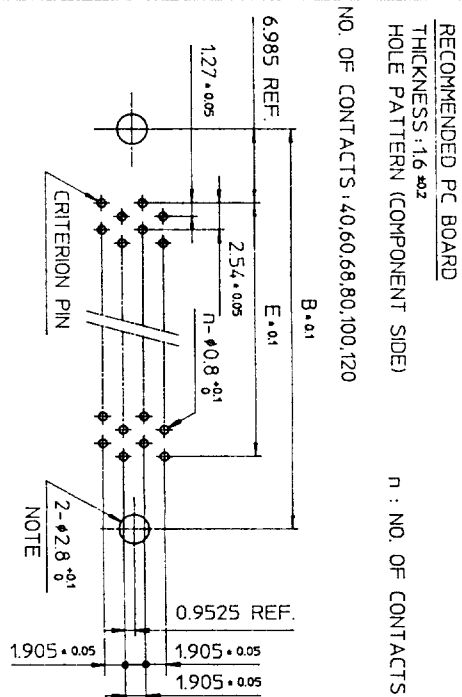
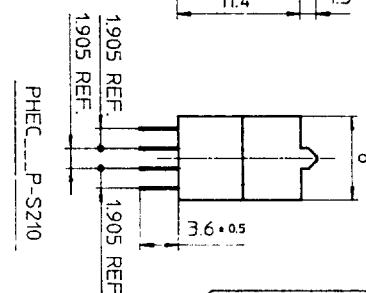
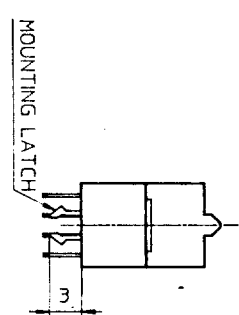
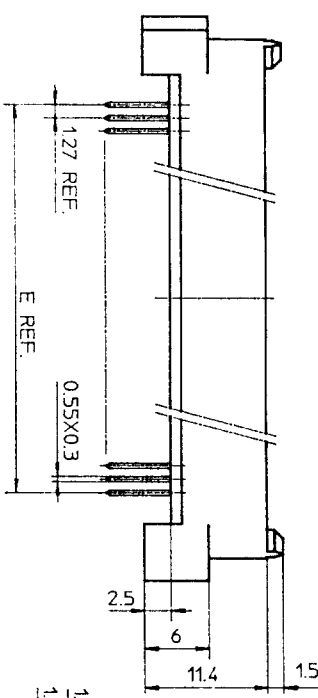
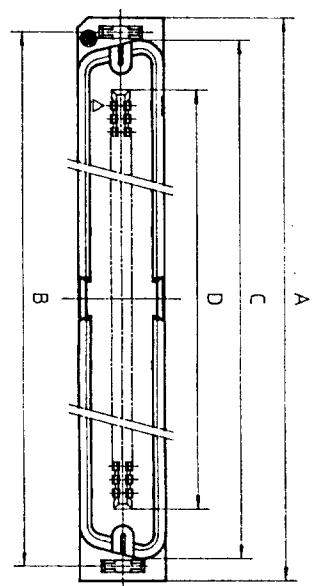
CAT. NO.	PHEC...P-R21
DRAWING NO.	JSC 90736
REV.	3

**BURNDY**  
JAPAN Ltd.

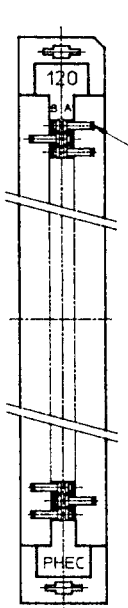
DESIGNED	
DRAWN	M. Oba
CHECKED	A. Ely
APPROVED	J. Koyashiro
DATE	Mar. 8, 1990

SCALE	
DIM. IN	mm
MATERIAL	

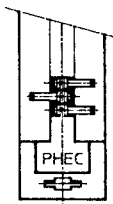
REV	DATE	DESCRIPTION	CKD
3	'92-8-14	30,34,50,68 POSITIONS ADDED. LOCATOR MATERIAL ADDED.	
2	'90-6-7	EC 7866	
1	'90-4-20	EC 7837	



NO. OF CONTACTS: 40,60,68,80,100,120



NO. OF CONTACTS: 30,34,50



MATERIAL

INSULATOR: NYLON RESIN GLASS REINFORCED (UL94V-0)  
COLOR: BLACK

CONTACT: COPPER ALLOY

MOUNTING LATCH: PHOSPHOR BRONZE  
SOLDER PLATED

CAT. NO.	NO. OF CONTACTS (MATING SIDE)	DIMENSIONS				
		A	B	C	D	E
PHEC30P-S21	15/ROW X 2 ROWS	34.55	31.75	30.3	20.42	17.78
PHEC34P-S21	17/ROW X 2 ROWS	37.09	34.29	32.84	22.96	20.32
PHEC40P-S21	20/ROW X 2 ROWS	40.9	38.1	36.65	26.77	24.13
PHEC50P-S21	25/ROW X 2 ROWS	47.25	44.45	43	33.12	30.48
PHEC60P-S21	30/ROW X 2 ROWS	53.6	50.8	49.35	39.47	36.83
PHEC68P-S21	34/ROW X 2 ROWS	58.68	55.88	54.43	44.55	41.91
PHEC80P-S21	40/ROW X 2 ROWS	66.3	63.5	62.05	52.17	49.53
PHEC100P-S21	50/ROW X 2 ROWS	79.0	76.2	74.75	64.87	62.23
PHEC120P-S21	60/ROW X 2 ROWS	91.7	88.9	87.45	77.57	74.93

TOLERANCES UNLESS OTHERWISE SPECIFIED: ±0.3

CONTACT PLATING TABLE

CONTACT AREA	REMAINDER
GOLD 0.25 MIN	SOLDER
OVER NICKEL 32	OVER NICKEL

PRINTED CIRCUIT CONNECTOR

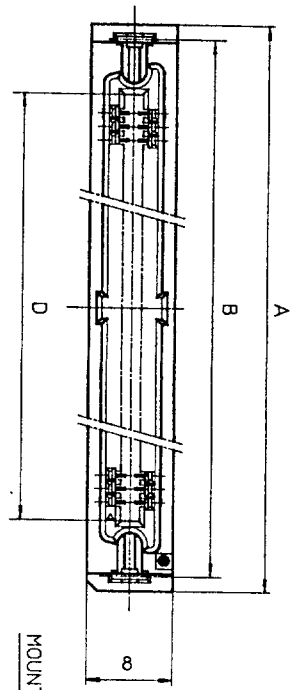
CAT. NO.	PHEC_P-S21
DRAWING NO.	JSC 90735
REV	3



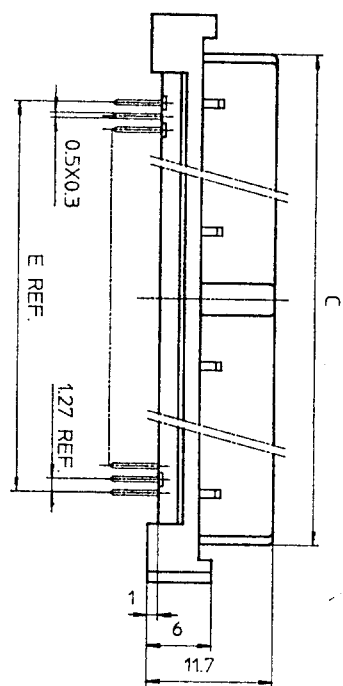
DESIGNED	
DRAWN	M. Oba
CHECKED	A. Ch
APPROVED	J. Toyoshita
DATE	Mar. 8, 1990

SCALE	1:1
DIM IN	mm
MATERIAL	

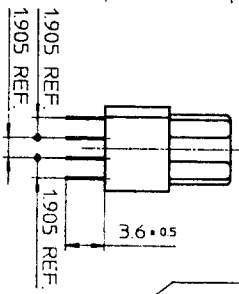
REV	DATE	DESCRIPTION	CHKD
3	8-11-92	30,34,50,68 POSITIONS ADDED.	
2	6-5-90	EC 7866	
1	4-20-90	EC 7837	



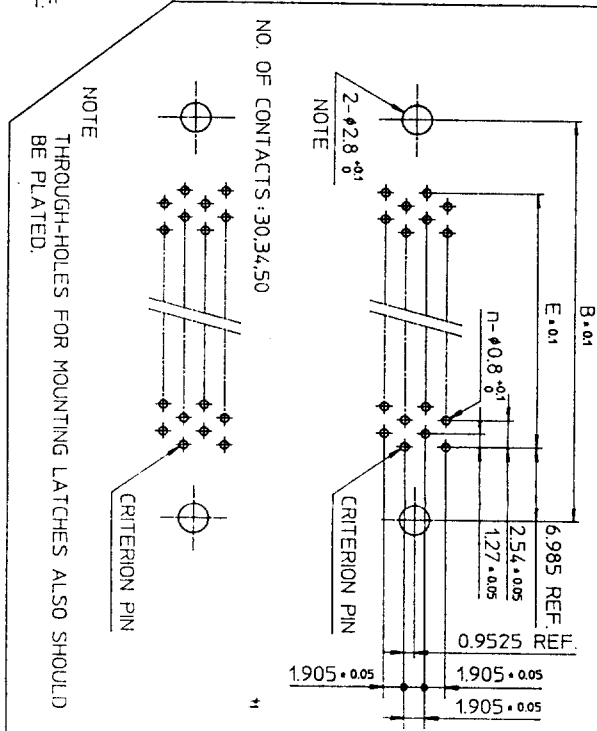
PHEC...R-S211



PHEC...R-S210

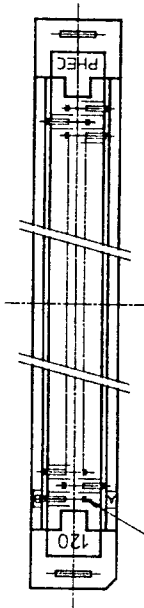


RECOMMENDED PC BOARD  
THICKNESS: 1.6 ± 0.2  
HOLE PATTERN (COMPONENT SIDE)  
NO. OF CONTACTS: 40,60,68,80,100,120  
n: NO. OF CONTACTS



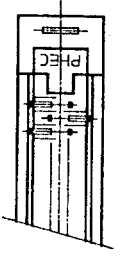
TOLERANCES UNLESS OTHERWISE SPECIFIED: ±0.3

NO. OF CONTACTS: 40,60,68,80,100,120



CRITERION PIN

NO. OF CONTACTS: 30,34,50



MATERIAL

INSULATOR: PBT RESIN GLASS REINFORCED (UL94V-0)  
COLOR: BLACK

CONTACT: PHOSPHOR BRONZE  
MOUNTING LATCH: PHOSPHOR BRONZE  
SOLDER PLATED

CAT. NO.	NO. OF CONTACTS (MATING SIDE)	DIMENSIONS				
		A	B	C	D	E
PHEC30R-S21	15/ROW X 2 ROWS	34.55	31.75	27.26	21.26	17.78
PHEC34R-S21	17/ROW X 2 ROWS	37.09	34.29	29.8	23.8	20.32
PHEC40R-S21	20/ROW X 2 ROWS	40.9	38.1	33.61	27.61	24.13
PHEC50R-S21	25/ROW X 2 ROWS	47.25	44.45	39.96	33.96	30.48
PHEC60R-S21	30/ROW X 2 ROWS	53.6	50.8	46.31	40.31	36.83
PHEC68R-S21	34/ROW X 2 ROWS	58.68	55.88	51.39	45.39	41.91
PHEC80R-S21	40/ROW X 2 ROWS	66.3	63.5	59.01	53.01	49.53
PHEC100R-S21	50/ROW X 2 ROWS	79.0	76.2	71.71	65.71	62.23
PHEC120R-S21	60/ROW X 2 ROWS	91.7	88.9	84.41	78.41	74.93

CONTACT PLATING TABLE

CONTACT AREA	REMAINDER
GOLD 0.25 MIN. OVER NICKEL 3.2	SOLDER OVER NICKEL

DRAWING NO. JSC 90737

PRINTED CIRCUIT CONNECTOR  
CAT. NO. PHEC...R-S211  
DRAWING NO. JSC 90737  
REV 4  
**BURNDY JAPAN Ltd.**

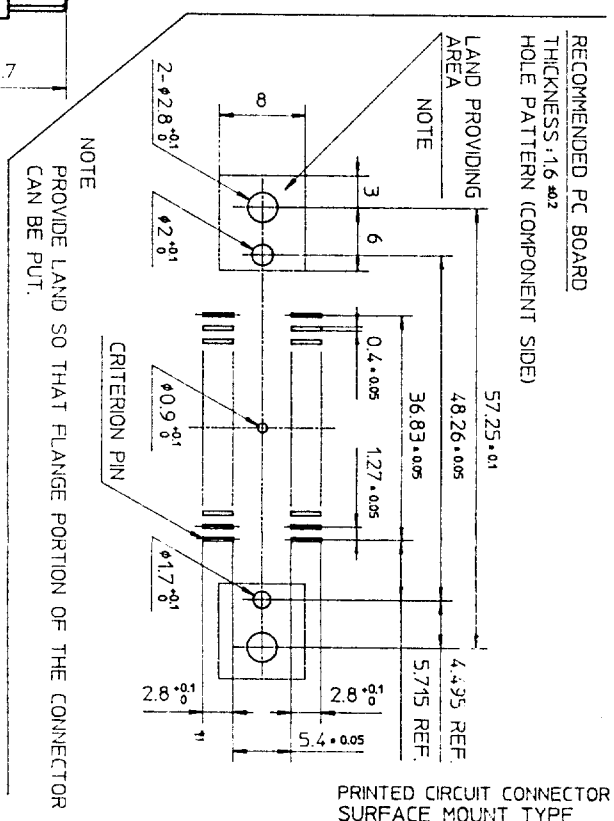
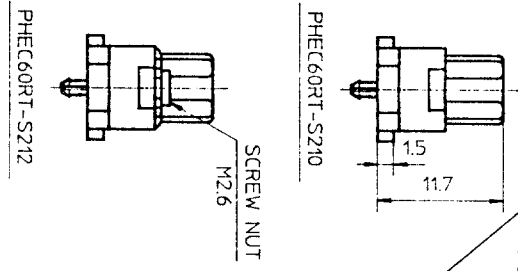
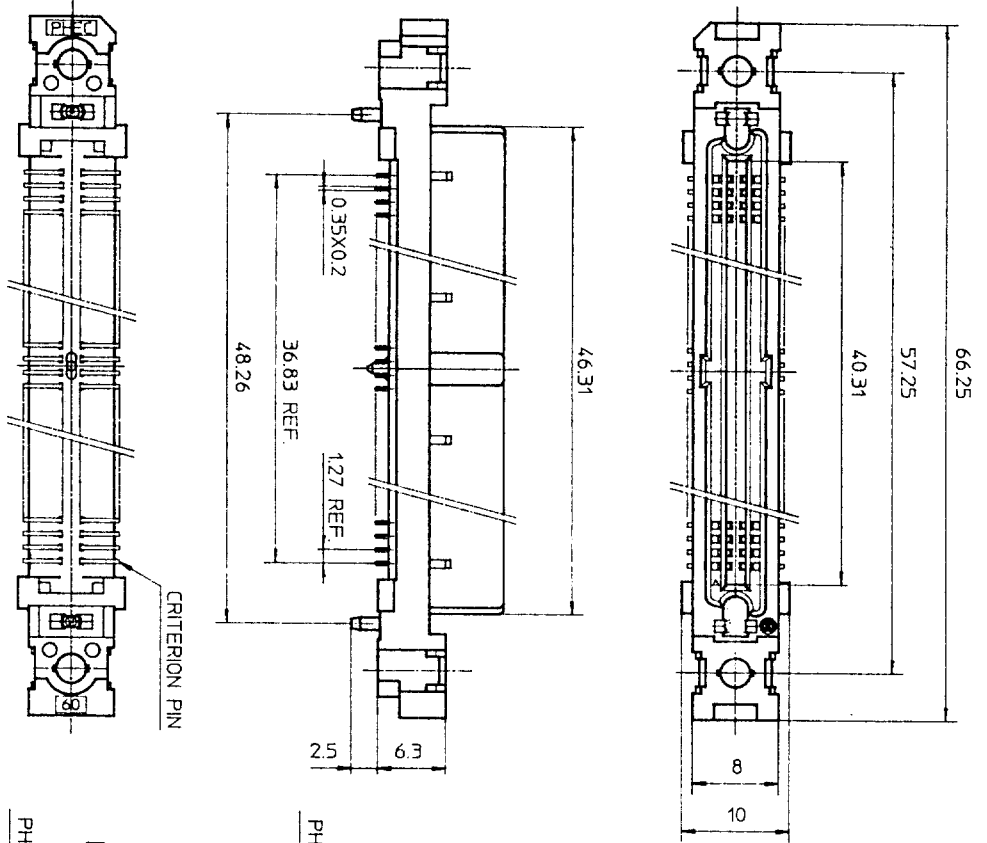
DESIGNED  
DRAWN M. Oba  
CHECKED A. Ebi  
APPROVED J. Hasegawa  
DATE Mar. 8, 1990

SCALE  
DIM. IN mm  
MATERIAL

REV	DATE	DESCRIPTION	CKD
3	8-11-92	30,34,50,68 POSITIONS ADDED	no S.P
2	5-30-90	EC 7866	no JK
1	4-20-90	EC 7837	no JK



DRAWING NO. JSC 90739



MATERIAL  
 INSULATOR : PPS RESIN GLASS REINFORCED (UL94V-0)  
 COLOR : BLACK  
 CONTACT : PHOSPHOR BRONZE  
 SCREW NUT : STAINLESS  
 NO. OF CONTACTS : 30/ROW X 2 ROWS (MATING SIDE)

CONTACT PLATING TABLE  
 (THICKNESS : μm)

CONTACT AREA	REMAINDER
GOLD 0.25 MIN. OVER NICKEL 3.2	SOLDER OVER NICKEL

TOLERANCES  
 UNLESS OTHERWISE SPECIFIED : ±0.3

RECOMMENDED PC BOARD  
 THICKNESS : 1.6 ± 0.2  
 HOLE PATTERN (COMPONENT SIDE)

PRINTED CIRCUIT CONNECTOR  
 SURFACE MOUNT TYPE

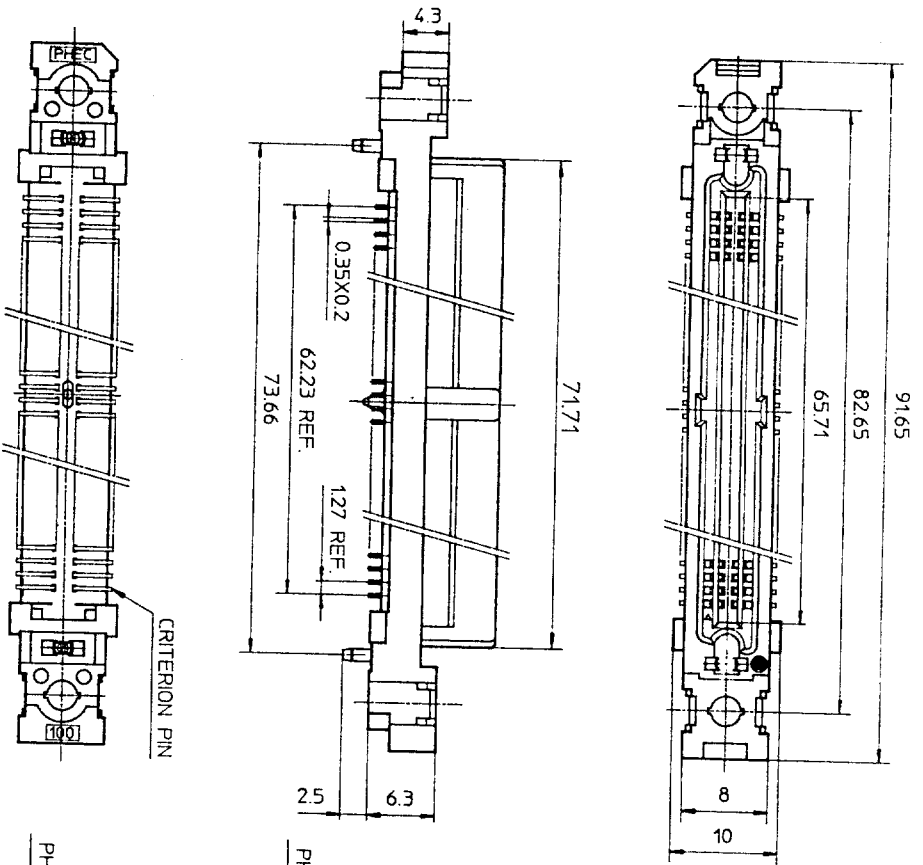
REV	DATE	DESCRIPTION	CHKD.
4	'92 8-14	WRONG CONTACT DIM. CORRECTED 100 POSITIONS OF DELETED.	M.S.
3	'92 1-8	DIM. CHANGED.	JK
2	'90 6-8	EC7866	JK
1	'90 4-20	VARIATION ADDED.	JK

SCALE : 1/2  
 DIM IN : MM  
 MATERIAL :

DESIGNED :  
 DRAWN : M. Osa  
 CHECKED : A. Eb  
 APPROVED : J. Kobayashi  
 DATE : Mar. 8, 1990

CAT. NO. PHEC60RT-S21\_  
 DRAWING NO. JSC 90739  
 REV. 4





91.65

82.65

65.71

71.71

0.35X0.2

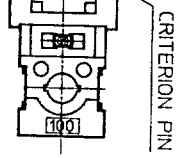
62.23 REF.

1.27 REF.

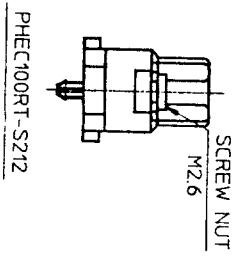
73.66

25

6.3



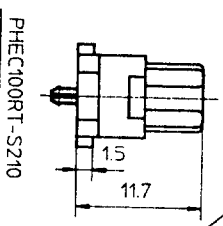
CRITERION PIN



PHEC100RT-S212

M2.6

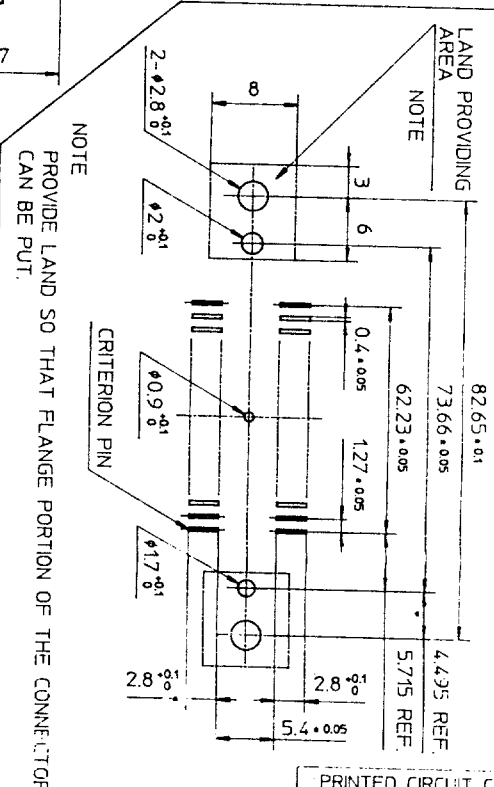
SCREW NUT



PHEC100RT-S210

1.5

11.7



RECOMMENDED PC BOARD THICKNESS: 1.6 ±0.2 HOLE PATTERN (COMPONENT SIDE)

LAND PROVIDING AREA NOTE

NOTE PROVIDE LAND SO THAT FLANGE PORTION OF THE CONNECTOR CAN BE PUT.

82.65 ±0.01

73.66 ±0.05

62.23 ±0.05

1.27 ±0.05

0.4 ±0.05

4.435 REF.

5.715 REF.

2.8 ±0.1

2.8 ±0.1

5.4 ±0.05

2-∅2.8<sup>+0.1</sup>

∅2.0<sup>+0.1</sup>

∅2.0<sup>+0.1</sup>

∅0.9<sup>+0.1</sup>

∅1.7<sup>+0.1</sup>

∅1.7<sup>+0.1</sup>

2.8 ±0.1

2.8 ±0.1

5.4 ±0.05

TOLERANCES UNLESS OTHERWISE SPECIFIED: ±0.3

MATERIAL  
 INSULATOR : PPS RESIN GLASS REINFORCED (UL94V-0)  
 COLOR : BLACK  
 CONTACT : PHOSPHOR BRONZE  
 SCREW NUT : STAINLESS  
 NO. OF CONTACTS : 50/ROW X 2 ROWS (MATING SIDE)

CONTACT PLATING TABLE

CONTACT PLATING TABLE		[THICKNESS : μm]	
CONTACT AREA	REMAINDER	GOLD 0.25 MIN.	SOLDER
		OVER NICKEL 3Z	OVER NICKEL

PRINTED CIRCUIT CONNECTOR SURFACE MOUNT TYPE

CAT. NO. PHEC100RT-S21

DRAWING NO. JSC 91839 REV. 0

BURNDY JAPAN, Ltd.

DESIGNED  
 DRAWN  
 CHECKED  
 APPROVED  
 DATE Aug. 11, 1992

SCALE  
 DIM. IN  
 MATERIAL

REV.	DATE	DESCRIPTION	CHKD.

REFERENCE

DRAWING NO. JSC 91839

DRAWING NO.  
JSC 90752

INSULATOR : PBT RESIN GLASS REINFORCED (UL94V-0)  
COLOR : BLACK  
CONTACT : PHOSPHOR BRONZE  
MOUNTING LATCH : PHOSPHOR BRONZE  
SOLDER PLATED

CONTACT PLATING TABLE  
[THICKNESS : μm]  
CONTACT AREA REMAINDER  
GOLD 0.25 MIN. SOLDER  
OVER NICKEL 3.2 OVER NICKEL

REV	DATE	DESCRIPTION	CKD.
5	'93 6-22	100 POSITIONS ADDED.	M. O
4	'93 2-1	WRONG CONTACT DIM. CORRECTED.	S. O
3	'92 8-11	100,120 POSITIONS DELETED. 30,34,50,68 POSITIONS ADDED.	S. O
2	'90 5-30	DIM. CHANGED (36.61 → 33.61)	S. O
1	'90 5-14	EC 7866	HE

SCALE

DIM IN mm

MATERIAL

DESIGNED

DRAWN M. Oba

CHECKED

APPROVED T. Ogasawara

DATE Mar. 24, 1990

PRINTED CIRCUIT CONNECTOR  
HIGH STAND OFF TYPE

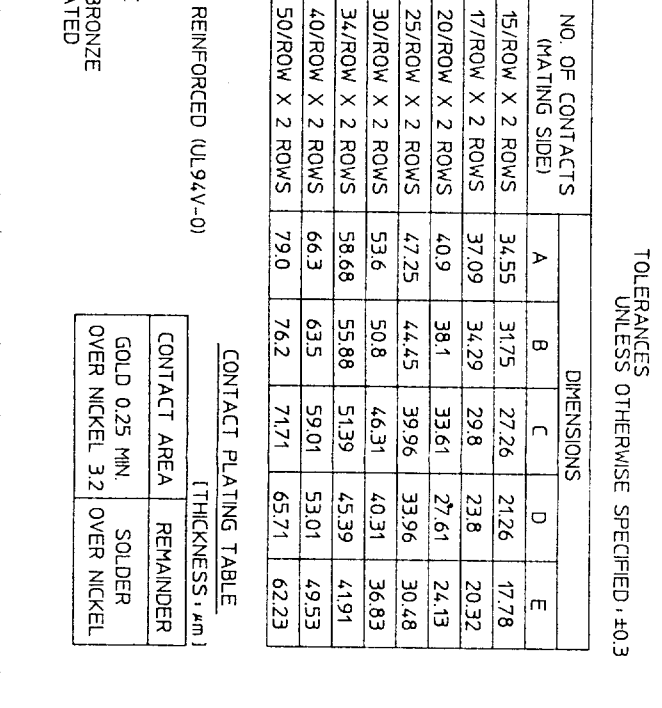
CAT. NO.  
PHEC\_\_\_R-S21\_-H

DRAWING NO. JSC 90752

REV 5

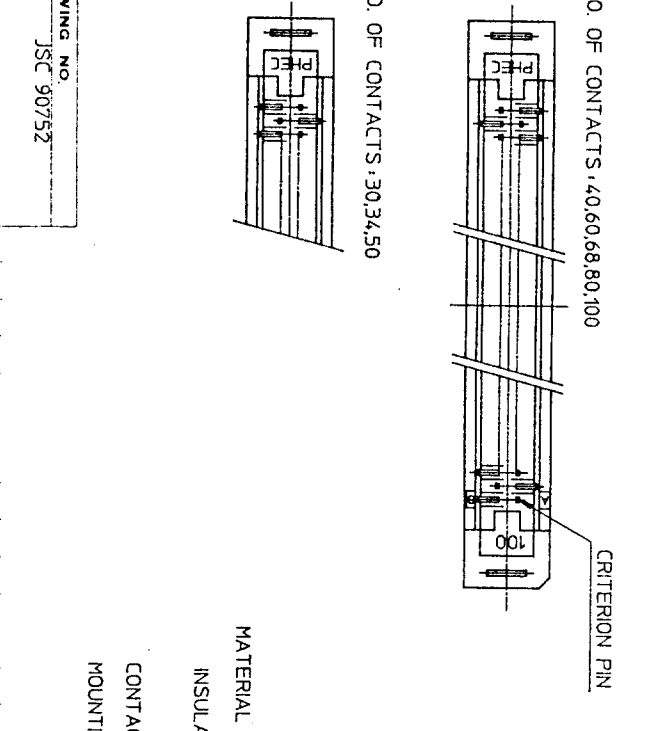
**BURNDY  
JAPAN, Ltd.**

RECOMMENDED PC BOARD  
THICKNESS : 1.6 ±0.2  
HOLE PATTERN (COMPONENT SIDE)  
NO. OF CONTACTS : 40,60,68,80,100

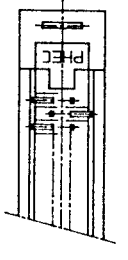
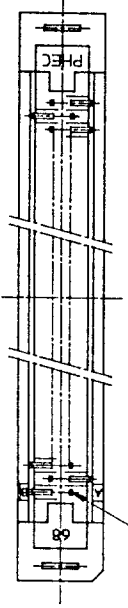
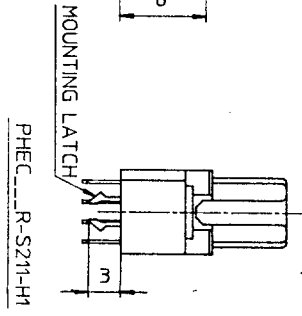
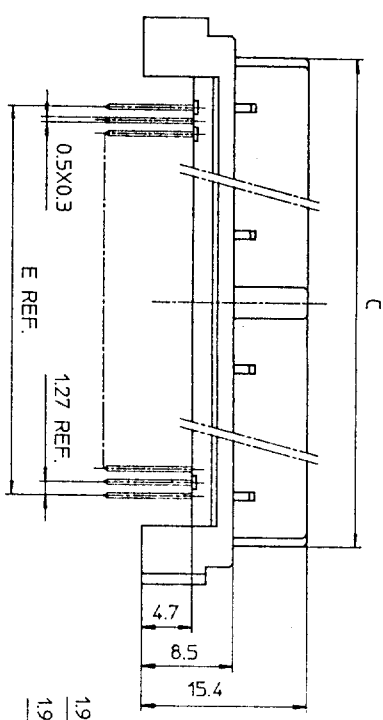
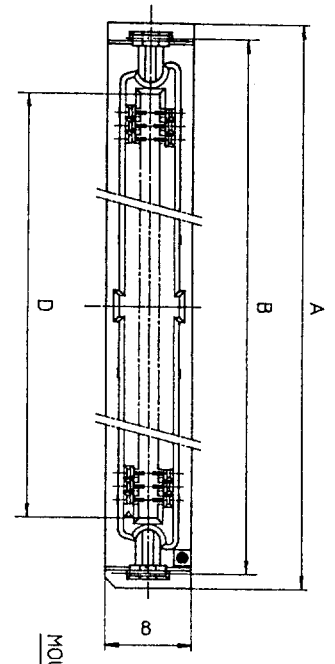


CAT. NO.	NO. OF CONTACTS (MATING SIDE)	DIMENSIONS				
		A	B	C	D	E
PHEC30R-S21_-H	15/ROW X 2 ROWS	34.55	31.75	27.26	21.26	17.78
PHEC34R-S21_-H	17/ROW X 2 ROWS	37.09	34.29	29.8	23.8	20.32
PHEC40R-S21_-H	20/ROW X 2 ROWS	40.9	38.1	33.61	27.61	24.13
PHEC50R-S21_-H	25/ROW X 2 ROWS	47.25	44.45	39.96	33.96	30.48
PHEC60R-S21_-H	30/ROW X 2 ROWS	53.6	50.8	46.31	40.31	36.83
PHEC68R-S21_-H	34/ROW X 2 ROWS	58.68	55.88	51.39	45.39	41.91
PHEC80R-S21_-H	40/ROW X 2 ROWS	66.3	63.5	59.01	53.01	49.53
PHEC100R-S21_-H	50/ROW X 2 ROWS	79.0	76.2	71.71	65.71	62.23

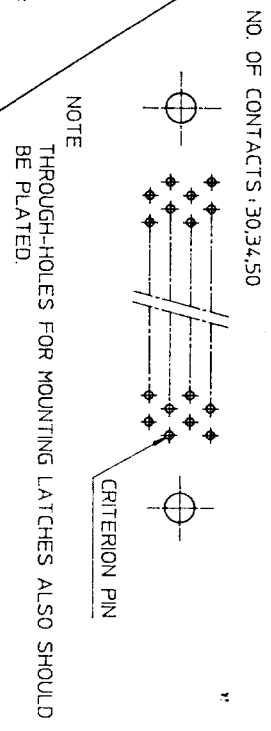
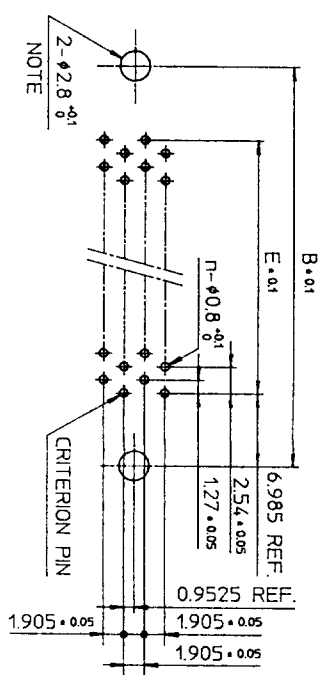
TOLERANCES  
UNLESS OTHERWISE SPECIFIED : ±0.3



DRAWING NO.  
JSC 90752



RECOMMENDED PC BOARD  
THICKNESS: 1.6 ± 0.2  
HOLE PATTERN (COMPONENT SIDE)  
NO. OF CONTACTS: 40, 60, 68



CAT. NO.	NO. OF CONTACTS (MATING SIDE)	DIMENSIONS				
		A	B	C	D	E
PHEC30R-S21-H1	15/ROW X 2 ROWS	34.55	31.75	27.26	21.26	17.78
PHEC34R-S21-H1	17/ROW X 2 ROWS	37.09	34.29	29.8	23.8	20.32
PHEC40R-S21-H1	20/ROW X 2 ROWS	40.9	38.1	33.61	27.61	24.13
PHEC50R-S21-H1	25/ROW X 2 ROWS	47.25	44.45	39.96	33.96	30.48
PHEC60R-S21-H1	30/ROW X 2 ROWS	53.6	50.8	46.31	40.31	36.83
PHEC68R-S21-H1	34/ROW X 2 ROWS	58.68	55.88	51.39	45.39	41.91

TOLERANCES  
UNLESS OTHERWISE SPECIFIED: ±0.3

MATERIAL

INSULATOR: PBT RESIN GLASS REINFORCED (UL94V-0)

COLOR: BLACK

CONTACT: PHOSPHOR BRONZE

MOUNTING LATCH: PHOSPHOR BRONZE  
SOLDER PLATED

CONTACT PLATING TABLE

CONTACT AREA	REMAINDER
GOLD 0.25 MIN. OVER NICKEL 3.2	SOLDER OVER NICKEL

DRAWING NO. JSC 91840

PRINTED CIRCUIT CONNECTOR  
HIGH STAND OFF TYPE  
CAT. NO. PHEC\_\_\_R-S21-H1  
DRAWING NO. JSC 91840  
REV. 1

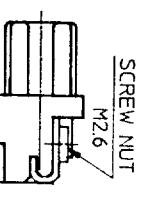
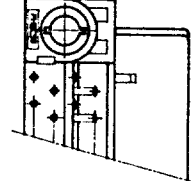
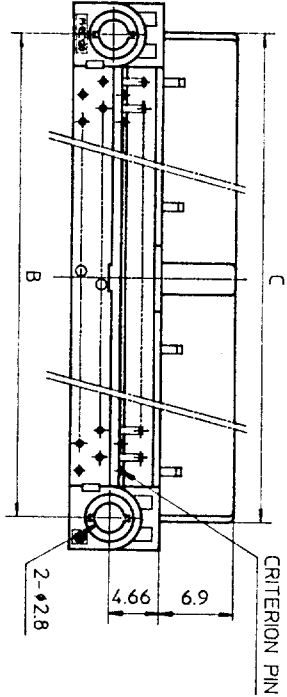
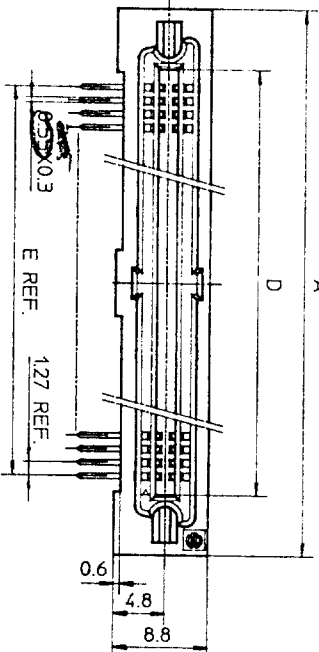
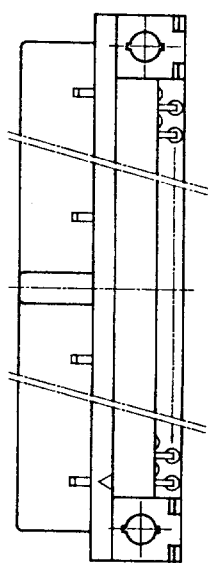
**BURNDY**  
JAPAN, Ltd.

DESIGNED  
DRAWN *M. Oba*  
CHECKED A. matsuo  
APPROVED *S. Ito*  
DATE Aug. 17, 1992

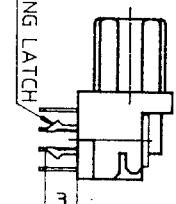
SCALE  
DIM IN mm  
MATERIAL

REV. DATE	DESCRIPTION	CKD
1 93	WRONG CONTACT DIM. CORRECTED.	
2-1		

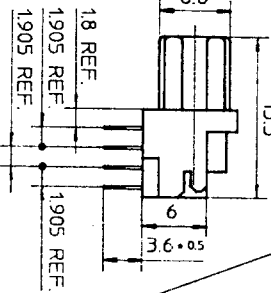




SCREW NUT  
M2.6



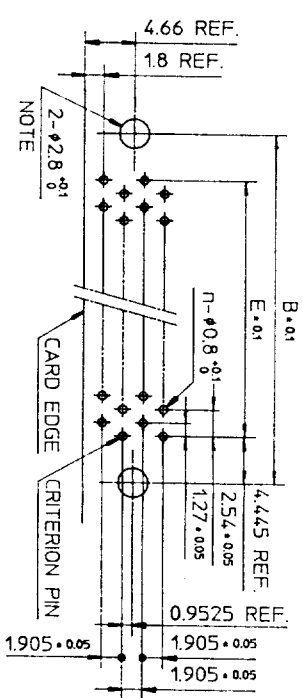
MOUNTING LATCH  
PHEC...R-R211



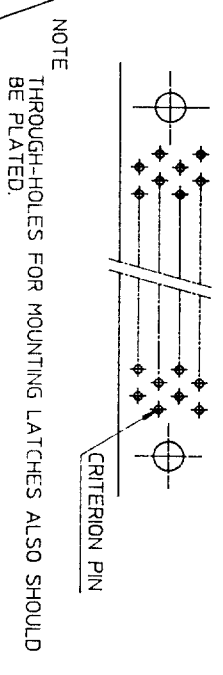
18 REF.  
1905 REF.  
1905 REF.  
1905 REF.  
PHEC...R-R210

RECOMMENDED P.C. BOARD  
THICKNESS: 1.6<sup>+0.2</sup>  
HOLE PATTERN (COMPONENT SIDE)  
NO. OF CONTACTS: 40,60,68,80,  
100,120

n : NO. OF CONTACTS



NO. OF CONTACTS: 30,34,50



NOTE  
THROUGH-HOLES FOR MOUNTING LATCHES ALSO SHOULD  
BE PLATED.  
CRITERION PIN

TOLERANCES  
UNLESS OTHERWISE SPECIFIED: ±0.3

CAT. NO.	NO. OF CONTACTS (MATING SIDE)	DIMENSIONS				
		A	B	C	D	E
PHEC30R-R21	15/ROW X 2 ROWS	32.67	26.67	27.26	21.26	17.78
PHEC34R-R21	17/ROW X 2 ROWS	35.21	29.21	29.8	23.8	20.32
PHEC40R-R21	20/ROW X 2 ROWS	39.02	33.02	33.61	27.61	24.13
PHEC50R-R21	25/ROW X 2 ROWS	45.37	39.37	39.96	33.96	30.48
PHEC60R-R21	30/ROW X 2 ROWS	51.72	45.72	46.31	40.31	36.83
PHEC68R-R21	34/ROW X 2 ROWS	56.8	50.8	51.39	45.39	41.91
PHEC80R-R21	40/ROW X 2 ROWS	64.42	58.42	59.01	53.01	49.53
PHEC100R-R21	50/ROW X 2 ROWS	77.12	71.12	71.71	65.71	62.23
PHEC120R-R21	60/ROW X 2 ROWS	89.82	83.82	84.41	78.41	74.93

CONTACT PLATING TABLE  
[THICKNESS: μm]

CONTACT AREA	REMAINDER
GOLD 0.25 MIN. OVER NICKEL 3.2	SOLDER OVER NICKEL

NO. OF CONTACTS: 30,34,50

MATERIAL

BODY : PBT RESIN GLASS REINFORCED (UL94V-0)  
LOCATOR COLOR : BLACK  
CONTACT : PHOSPHOR BRONZE  
MOUNTING LATCH : PHOSPHOR BRONZE  
SCREW NUT : STEEL  
NICKEL PLATED

DRAWING NO.  
JSC 90738

PRINTED CIRCUIT CONNECTOR  
CAT. NO. PHEC...R-R21  
DRAWING NO. JSC 90738  
REV. 3  
**BURNDY JAPAN, Ltd.**

DESIGNED  
DRAWN *M. Oba*  
CHECKED *4. Ely*  
APPROVED *J. Toyoshita*  
DATE Mar. 8, 1990

SCALE  
DIM. IN mm  
MATERIAL

REV.	DATE	DESCRIPTION	CKD
3	92-8-11	30,34,50,68 POSITIONS ADDED.	<i>M.O.</i>
2	90-6-8	EC 7866	<i>No</i>
1	90-4-20	EC 7837	<i>No</i>