



Chipsmall Limited consists of a professional team with an average of over 10 year of expertise in the distribution of electronic components. Based in Hongkong, we have already established firm and mutual-benefit business relationships with customers from,Europe,America and south Asia,supplying obsolete and hard-to-find components to meet their specific needs.

With the principle of “Quality Parts,Customers Priority,Honest Operation,and Considerate Service”,our business mainly focus on the distribution of electronic components. Line cards we deal with include Microchip,ALPS,ROHM,Xilinx,Pulse,ON,Everlight and Freescale. Main products comprise IC,Modules,Potentiometer,IC Socket,Relay,Connector.Our parts cover such applications as commercial,industrial, and automotives areas.

We are looking forward to setting up business relationship with you and hope to provide you with the best service and solution. Let us make a better world for our industry!



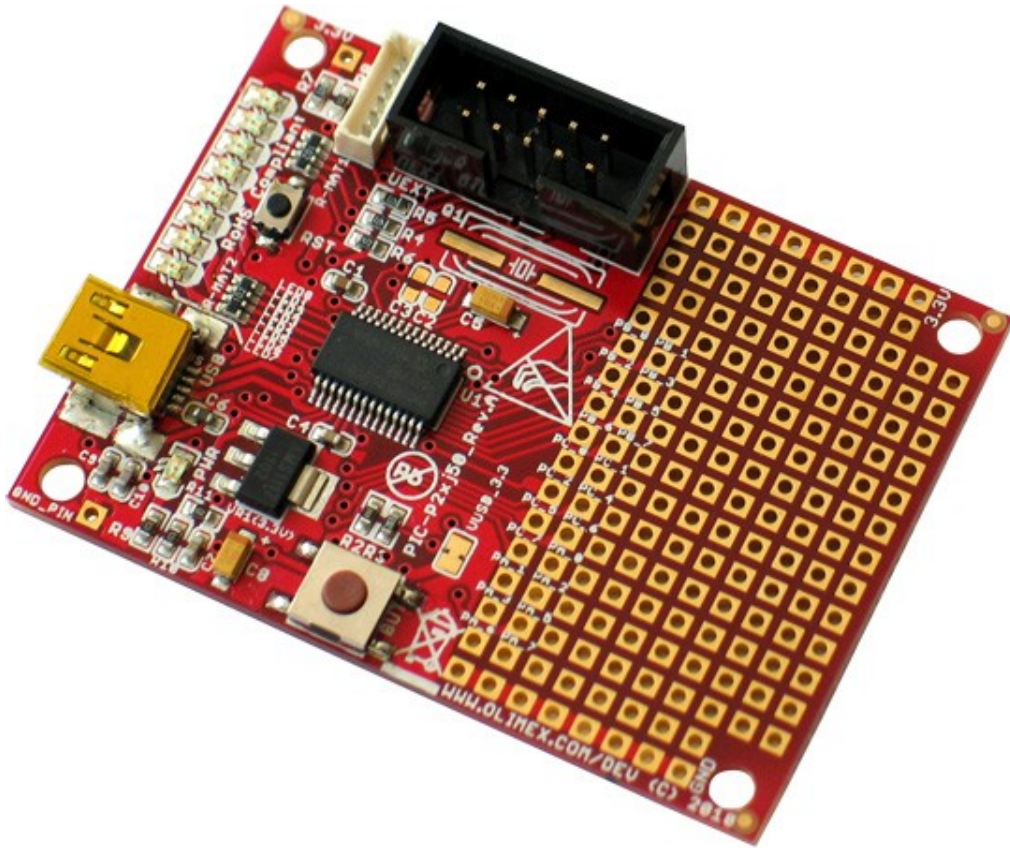
## Contact us

Tel: +86-755-8981 8866 Fax: +86-755-8427 6832

Email & Skype: info@chipsmall.com Web: www.chipsmall.com

Address: A1208, Overseas Decoration Building, #122 Zhenhua RD., Futian, Shenzhen, China





## **PIC-P26J50 Proto development board** **USER'S MANUAL**

All boards produced by Olimex LTD are ROHS compliant



Initial release, Januray 2012  
Designed by OLIMEX Ltd, 2011

**Disclaimer:**

© 2012 Olimex Ltd. Olimex®, logo and combinations thereof, are registered trademarks of Olimex Ltd. Other terms and product names may be trademarks of others.

**The information in this document is provided in connection with Olimex products. No license, express or implied or otherwise, to any intellectual property right is granted by this document or in connection with the sale of Olimex products.**

Neither the whole nor any part of the information contained in or the product described in this document may be adapted or reproduced in any material form except with the prior written permission of the copyright holder.

The product described in this document is subject to continuous development and improvements. All particulars of the product and its use contained in this document are given by OLIMEX in good faith. However all warranties implied or expressed including but not limited to implied warranties of merchantability or fitness for purpose are excluded.

This document is intended only to assist the reader in the use of the product. OLIMEX Ltd. shall not be liable for any loss or damage arising from the use of any information in this document or any error or omission in such information or any incorrect use of the product.

**Thank you for purchasing the PIC-P26J50 board manufactured by Olimex!**

## **TABLE OF CONTENTS**

---

|  |                    |
|--|--------------------|
| SECTION 1 OVERVIEW                         | <a href="#">4</a>  |
| SECTION 2 SETTING UP THE DEVELOPMENT BOARD | <a href="#">5</a>  |
| SECTION 3 PIC-P26J50 BOARD DESCRIPTION     | <a href="#">7</a>  |
| SECTION 4 THE PIC18F26J59 MICROCONTROLLER  | <a href="#">8</a>  |
| SECTION 5 CONTROL CIRCUITRY                | <a href="#">11</a> |
| SECTION 6 HARDWARE                         | <a href="#">12</a> |
| SECTION 7 MEMORY                           | <a href="#">15</a> |
| SECTION 8 SCHEMATICS                       | <a href="#">16</a> |
| SECTION 9 REVISION HISTORY                 | <a href="#">19</a> |

---

# SECTION 1

## OVERVIEW

---

Thank you for choosing the PIC-P26J50 development board from Olimex! This document provides a User's Guide for the Olimex PIC-P26J50 development board. As an overview, this chapter gives the scope of this document and lists the board's features. The document's organization is then detailed.

---

### 1.1 Scope

The PIC-P26J50 development board enables code development of applications running on the PIC18F26J59 microcontroller. This guide focuses on the PIC-P26J50 board as a development platform for the PIC18F26J59 device.

---

### 1.2 Features

- PIC18F26J59 microcontroller with 64K Flash
- USB connector
- 8 LEDs
- Reset button
- User button
- UEXT connector
- mini ICSP/ICD (0,05") connector for programming
- All PIC free ports available on header close to the prototype area
- Perfect for hobbyists
- Dimensions 61x45 mm (2.4 x 1.77")

---

### 1.3 Organization

Each section in this document covers a separate topic, organized as follow:

- Section 1 is an overview of the board usage and features
- Section 2 provides a guide for quickly setting up the board
- Section 3 contains the general board diagram and layout
- Section 4 describes the component that is the heart of the board: the PIC18F26J59 microcontroller
- Section 5 is an explanation of the control circuitry associated with the microcontroller to reset, power and clock the board
- Section 6 covers the connector pinout, peripherals and jumper description
- Section 7 shows the memory map
- Section 8 provides the schematics
- Section 9 contains the revision history

---

## SECTION 2

# SETTING UP THE PIC-P26J50 DEVELOPMENT BOARD

This section helps you set up the PIC-P26J50 development board for the first time.

Please consider first the electrostatic warning to avoid damaging the board, then discover the hardware and software required to operate the board.

The procedure to power up the board is given, and a description of the default board behavior is detailed.

---

## 2.1 Electrostatic Warning

The PIC-P26J50 development board is shipped in a protective anti-static package. The board must not be exposed to high electrostatic potentials. A grounding strap or similar protective device should be worn when handling the board. Avoid touching the component pins or any other metallic element.

---

## 2.2 Requirements

In order to set up the PIC-P26J50 proto board, the following items are required:

- The PIC-P26J50 development board itself
- miniUSB - USB cable

Or

- 3,3 V external power supply

Note: The board is not delivered with an ICSP debugger/programmer, which is needed if you want to reprogram it. Remember that the connector on the board is mini ICSP (6 pin). You may use a pair of the following devices for this purpose:

- Olimex's PIC-ICD2-POCKET + Olimex's PIC-ICSP
- Olimex's PIC-KIT3 + Olimex's PIC-ICSP

Or any compatible PIC programmer with 0,05'' step ICSP connector.

Also, a host-based software toolchain is required in order to program/debug the PIC-P26J50 board.

Our suggestion is to use Microchip's MPLab IDE.

---

## 2.3 Powering up the board

The PIC-P26J50 board is self-powered by the miniUSB.

Additionally the board can be powered using the PROTO AREA pads. Provide 3.3 V to the respective pad with the same label. Ground pad is named GND on the opposite side of the 3.3 V.

On powering the board the PWR LED must turn on and the 8 LEDs must start turning on consecutively.

---

## 2.4 Prebuilt software

On arrival the board has a simple demo for the LEDS (blinking consecutively) and on pressing BUT they should blink in a different manner.

---

## SECTION 3

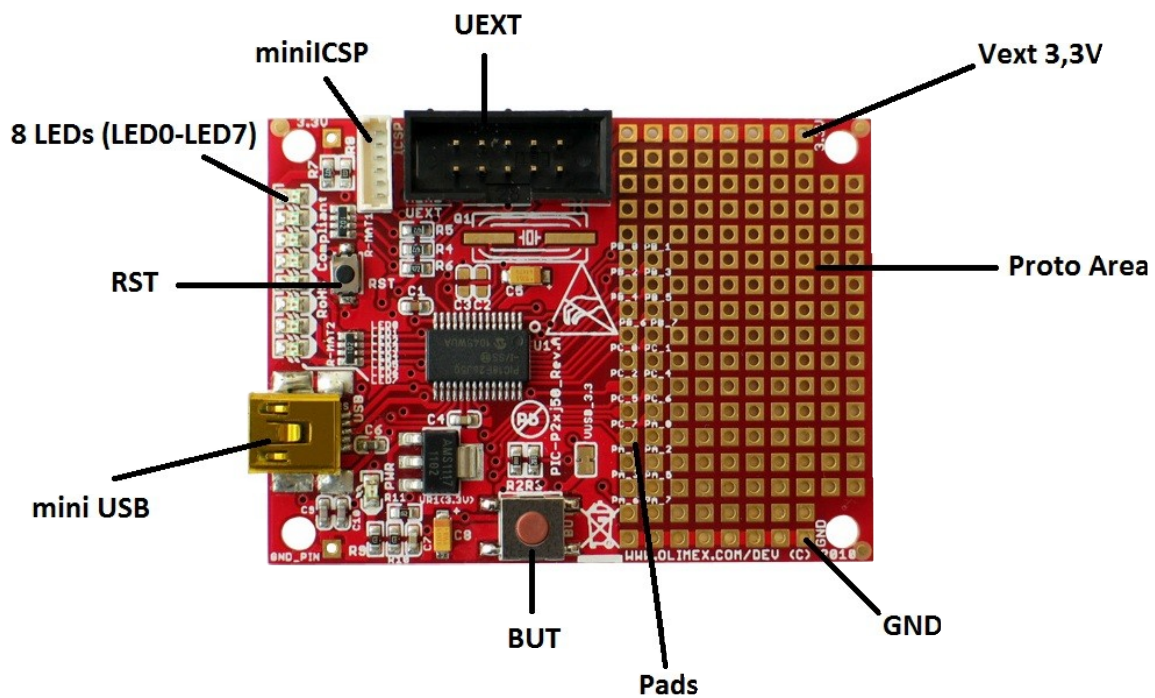
### PIC-P26J50 BOARD DESCRIPTION

---

Here you get acquainted with the main parts of the board. Note the names used on the board differ from the names used to describe them. For the actual names check the PIC-P26J50 board itself.

---

#### 3.1 Layout (Top view):





---

## SECTION 4

# THE PIC18F26J50 MICROCONTROLLER

---

## 4.1 Features

### Power Management Features with nanoWatt XLP™ for Extreme Low-Power:

- **Deep Sleep mode: CPU off, Peripherals off,**  
Currents Down to 13  $\mu$ A and 850 nA with RTCC:
  - Able to wake-up on external triggers, programmable WDT or RTCC alarm
  - Ultra Low-Power Wake-up (ULPWU)
- Sleep mode: CPU off, Peripherals off, SRAM on, Fast Wake-up, Currents Down to 105  $\mu$ A, Typical
- Idle: CPU off, Peripherals on, Currents Down to 2.3 nA, Typical
- Run: CPU on, Peripherals on, Currents Down to 6.2 nA, Typical
- Timer1 Oscillator w/RTCC: 1 nA, 32 kHz, Typical
- Watchdog Timer: 0.8  $\mu$ A, 2V, Typical

### Special Microcontroller Features:

- Low-Power, High-Speed CMOS Flash Technology
- C Compiler Optimized Architecture for Re-Entrant Code
- Priority Levels for Interrupts
- Self-Programmable under Software Control
- 8 x 8 Single-Cycle Hardware Multiplier
- Extended Watchdog Timer (WDT):
  - Programmable period from 4 ms to 131s
- Single-Supply In-Circuit Serial Programming™(ICSP™) via two pins
- In-Circuit Debug (ICD) w/Three Breakpoints via 2 Pins
- Operating Voltage Range of 2.0V to 3.6V
- On-Chip 2.5V Regulator
- Flash Program Memory of 10,000 Erase/Write Cycles Minimum and 20-Year Data Retention

### Universal Serial Bus (USB) Features

- USB V2.0 Compliant
- Full Speed (12 Mbps) and Low Speed (1.5 Mbps)
- Supports Control, Interrupt, Isochronous and BulkTransfers
- Supports up to 32 Endpoints (16 bidirectional)
- USB module can use any RAM Location on the Device as USB Endpoint Buffers
- On-Chip USB Transceiver with Crystal-less operation

### Flexible Oscillator Structure:

- High-Precision Internal Oscillator ( $\pm 0.15\%$  typ.) for USB
- Two External Clock modes, up to 48 MHz (12 MIPS)
- Low-Power, 31 kHz Internal RC Oscillator
- Tunable Internal Oscillator (31 kHz to 8 MHz, or up to 48 MHz with PLL)
- Secondary Oscillator using Timer1 @ 32 kHz

- Fail-Safe Clock Monitor:
  - Allows for safe shutdown if any clock stops
- Two-Speed Oscillator Start-up
- Programmable Reference Clock Output Generator

**Peripheral Highlights:**

- Peripheral Pin Select:
  - Allows independent I/O mapping of many peripherals
  - Continuous hardware integrity checking and safety interlocks prevent unintentional configuration changes
- Hardware Real-Time Clock and Calendar (RTCC):
  - Provides clock, calendar and alarm functions
- High-Current Sink/Source 25 mA/25 mA (PORTB and PORTC)
- 5.5V Tolerant Inputs (digital only pins)
- Four Programmable External Interrupts
- Four Input Change Interrupts
- Two Enhanced Capture/Compare/PWM (ECCP) modules:
  - One, two or four PWM outputs
  - Selectable polarity
  - Programmable dead time
  - Auto-shutdown and auto-restart
  - Pulse steering control
- Two Master Synchronous Serial Port (MSSP) modules Supporting Three-Wire SPI (all four modes) and I2C™ Master and Slave modes
- Full-Duplex Master/Slave SPI DMA Engine
- 8-Bit Parallel Master Port/Enhanced Parallel Slave Port
- Two-Rail – Rail Analog Comparators with Input Multiplexing
- 10-Bit, up to 13-Channel Analog-to-Digital (A/D) Converter module:
  - Auto-acquisition capability
  - Conversion available during Sleep
  - Self-calibration
- High/Low-Voltage Detect module
- Charge Time Measurement Unit (CTMU):
  - Supports capacitive touch sensing for touch screens and capacitive switches
  - Provides a precise resolution time measurement for both flow measurement and simple temperature sensing
- Two Enhanced USART modules:
  - Supports RS-485, RS-232 and LIN/J2602
  - Auto-Wake-up on Start bit
- Auto-Baud Detect

For comprehensive information on the microcontroller visit the Microchip's web page for a datasheet.

At the moment of writing the microcontroller datasheet can be found at the following link:

<http://ww1.microchip.com/downloads/en/DeviceDoc/39931d.pdf>

---

## SECTION 5

### CONTROL CIRCUITRY

---

---

#### 5.1 Power supply

When PIC-P26J50 is connected via a USB cable to a USB host it will take its 3,3V power supply from the USB host source to power the board.

Additionally the board can be powered using the 3.3V pad and the GND pad on the proto area.

---

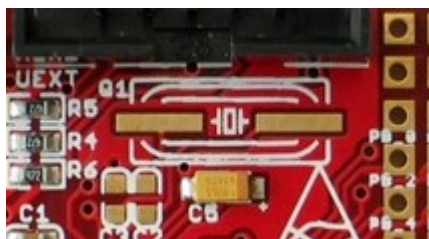
#### 5.2 Reset

PIC-P26J50 reset circuit includes R8 (390Ω), PIC18F26J59 pin 1 (#MCLR/TTL) and a RESET button.

---

#### 5.3 Clock

Quartz crystal pad is available but a quartz crystal is not mounted! If you want to use the oscillator you have to mount a quartz crystal 12Mhz/12pF on Q1.

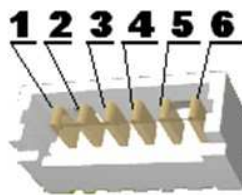


## SECTION 6 HARDWARE

### 6.1 Mini ICSP

The mini ICSP connector provides the interface for In-Circuit-Serial-Programming. The step between its pins is 0.05".

| Pin # | Signal Name   |
|-------|---------------|
| 1     | RSTN/Vpp      |
| 2     | +3.3V         |
| 3     | GND           |
| 4     | PGD           |
| 5     | PGC           |
| 6     | Not connected |



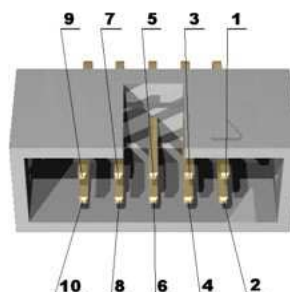
### 6.2 UEXT

PIC32-PINGUINO-MICRO board has UEXT connector and can interface Olimex's UEXT modules.

For more information on UEXT please visit:

<http://www.olimex.com/dev/OTHER/UEXT.pdf>

| Pin # | Signal Name |
|-------|-------------|
| 1     | +3.3V       |
| 2     | GND         |
| 3     | TXD         |
| 4     | RXD         |
| 5     | SCL         |
| 6     | SDA         |



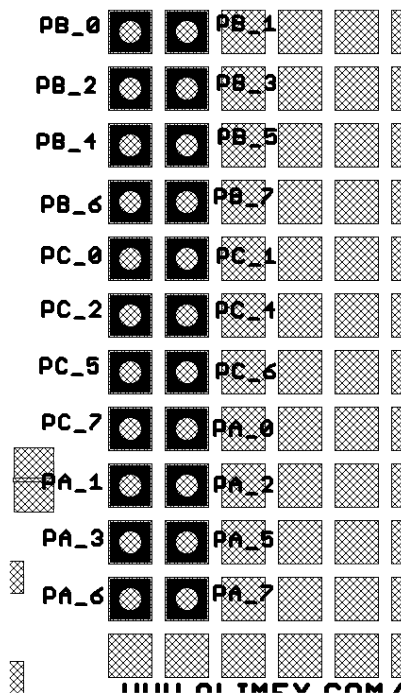
|    |      |
|----|------|
| 7  | MISO |
| 8  | MOSI |
| 9  | SCK  |
| 10 | CS   |

### 6.3 Pads on the proto area

For your convenience the pads are named individually near each of them. Please take extra care about the numbering.

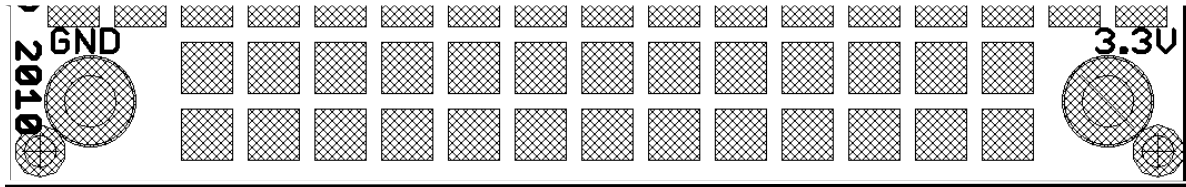
All pads are near the PIC18, except for GND and 3,3V pads.

| PAD # | Signal Name               |
|-------|---------------------------|
| PB_0  | USER (RB0/AN12/INT0/RP3)  |
| PB_1  | SCK                       |
| PB_2  | MISO                      |
| PB_3  | MOSI                      |
| PB_4  | SCL                       |
| PB_5  | SDA                       |
| PB_6  | PGC                       |
| PB_7  | PGD                       |
| PC_0  | LED6                      |
| PC_1  | LED5                      |
| PC_2  | LED4                      |
| PC_4  | D-                        |
| PC_5  | D+                        |
| PC_6  | TXD                       |
| PC_7  | RXD                       |
| PA_0  | LED0                      |
| PA_1  | LED1                      |
| PA_2  | LED2                      |
| PA_3  | LED3                      |
| PA_5  | LED7                      |
| PA_6  | OSC2/CLK0 (to quartz pad) |



|      |                     |
|------|---------------------|
| PA_7 | Vss OSC (quarz pad) |
|------|---------------------|

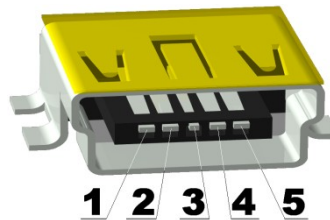
## 6.4 Power pads on the proto area



For your convenience the external power pads are named individually on the top of the board. Please take extra care about the naming.

## 6.5 Mini USB

| Pin # | Signal Name   |
|-------|---------------|
| 1     | +5V_VBUS      |
| 2     | D -           |
| 3     | D +           |
| 4     | Not connected |
| 5     | GND           |



## 6.6 Jumper description

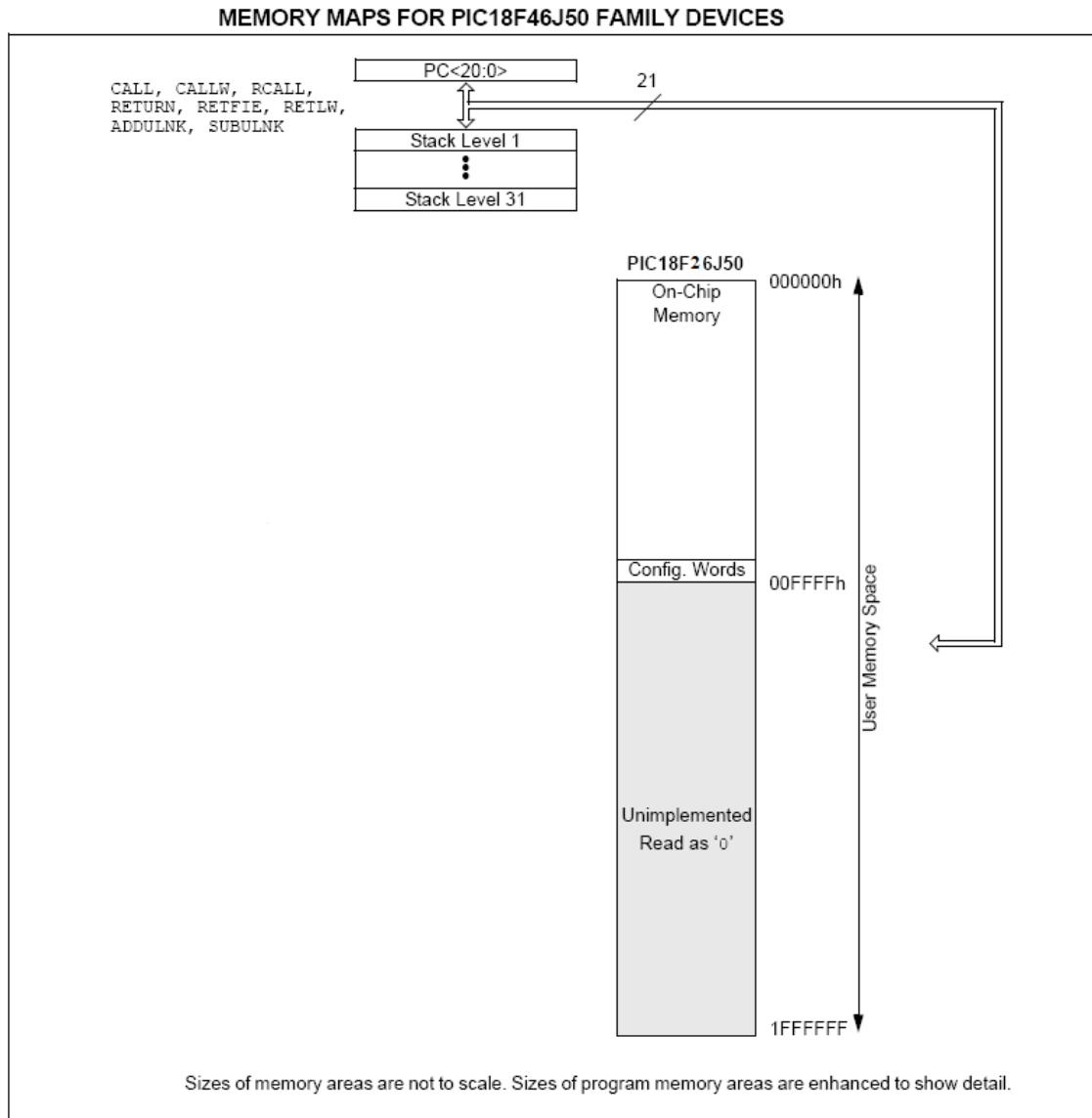
VUSB\_3.3



This jumper, when closed, enables 3.3 V received from the USB.  
Default state is closed.

# SECTION 7 MEMORY

## 7.1 Memory map





## SECTION 8

---

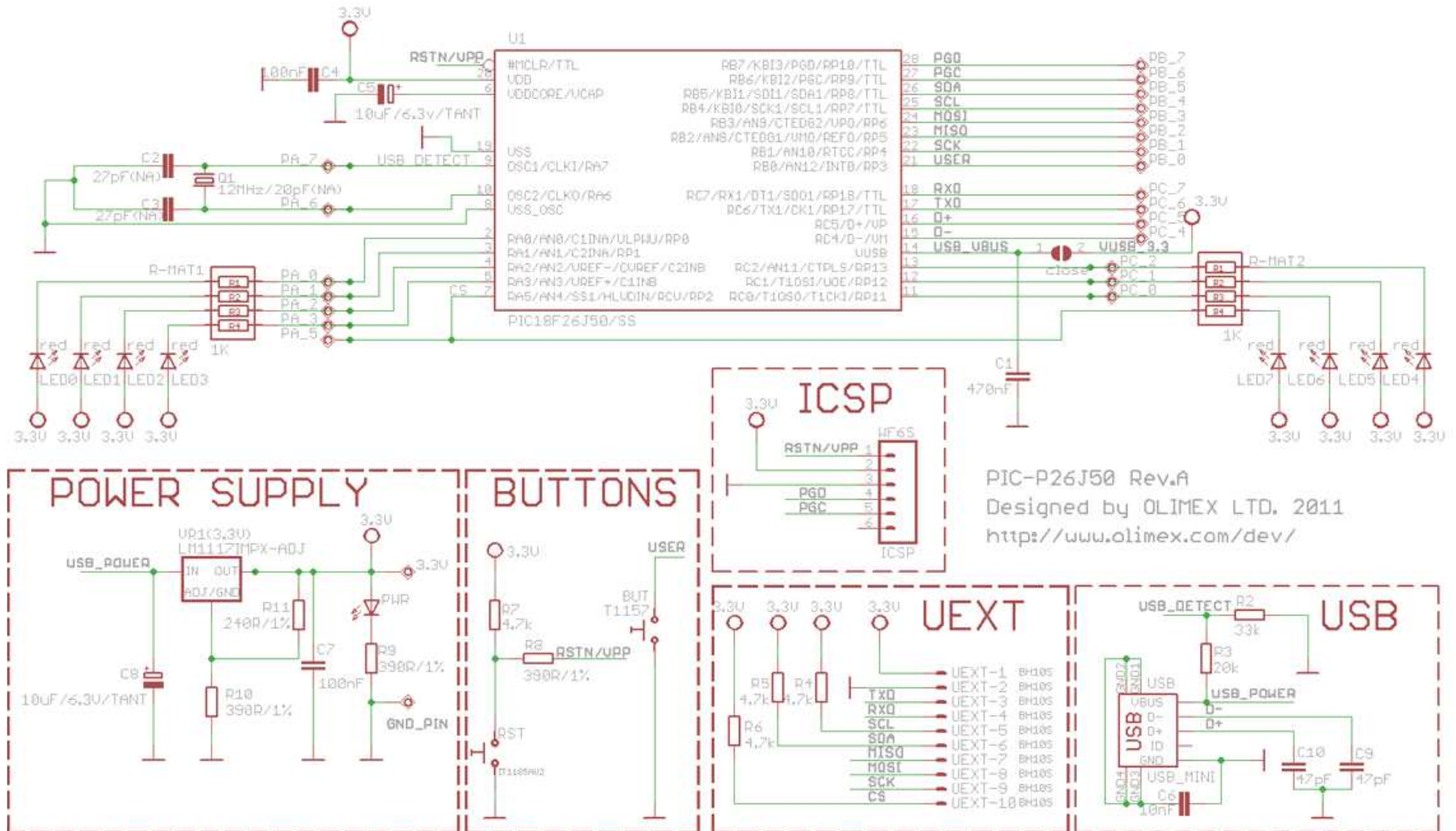
## SCHEMATICS

---

### 8.1 Eagle schematic

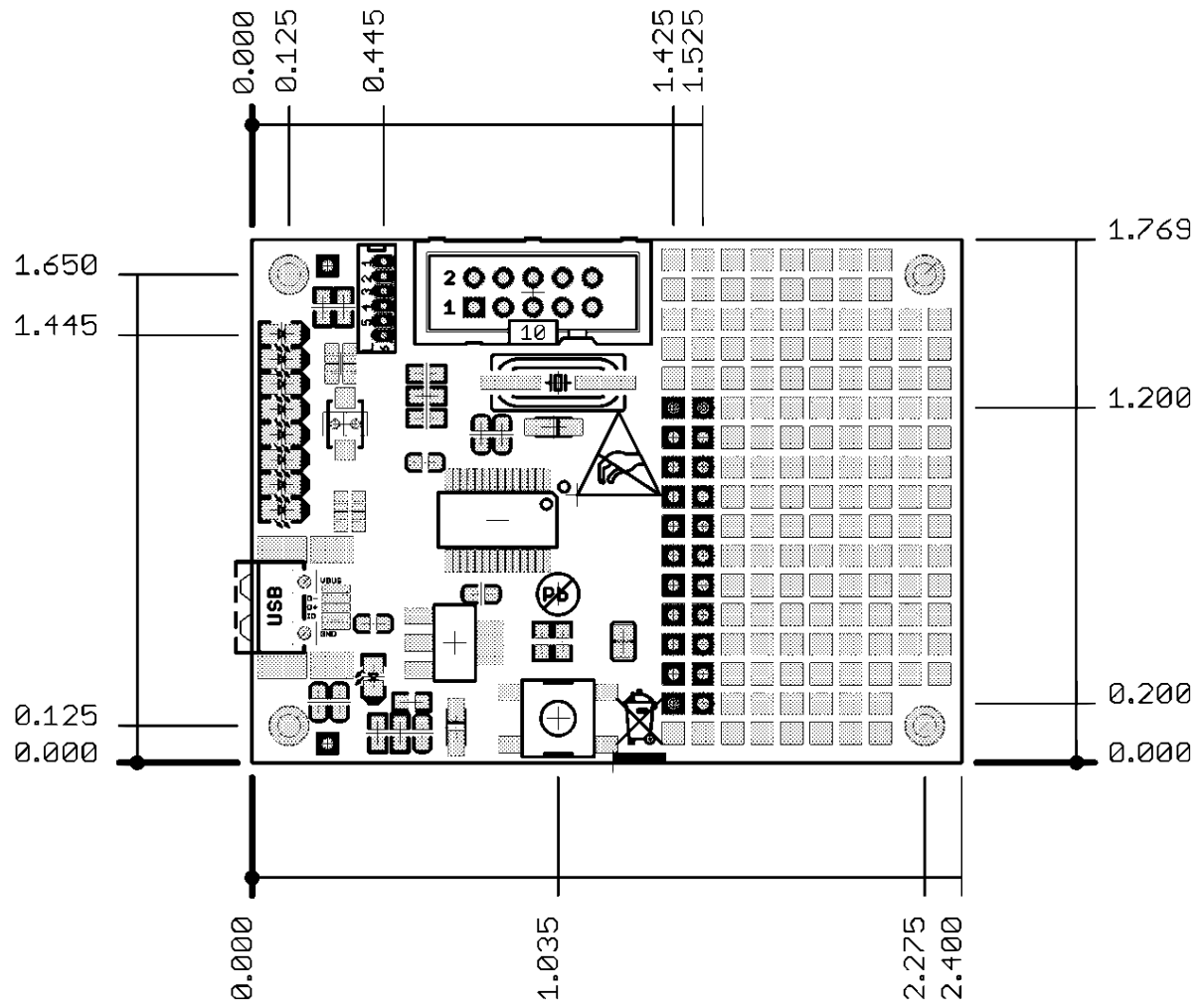
PIC-P26J50 schematic is visible for reference here. You can also find them on separated in the web page for PIC-P26J50 on our site: <http://www.olimex.com/dev/pic-p26j50.html>. They are located in HARDWARE section.

The EAGLE schematic is situated on the next page for quicker reference.



## 8.2 Physical dimensions

Note: All dimensions are in inches!



---

## SECTION 9

### REVISION HISTORY

---

#### 9.1 Document revision

| Revision | Changes          | Modified Pages |
|----------|------------------|----------------|
| A        | Initial Creation | All            |

---

#### 9.2 Web page of your device

The web page you can visit for more info on your device is <http://www.olimex.com/dev/pic-p26j50.html>. There you can find more info and some examples.

##### ORDER CODES:

**PIC-P26J50** - completely assembled and tested with **PIC18F26J50** on board

**PIC-ICD2-POCKET + PIC-ICSP** - for custom programming/debugging

**PIC-KIT3 + PIC-ICSP** - for custom programming/debugging

**USB-MINI-CABLE** - USBmini to USB-A cable

How to order?

You can order to us directly or by any of our distributors.

Check our webpage <http://www.olimex.com/> for more info.