



Chipsmall Limited consists of a professional team with an average of over 10 year of expertise in the distribution of electronic components. Based in Hongkong, we have already established firm and mutual-benefit business relationships with customers from,Europe,America and south Asia,supplying obsolete and hard-to-find components to meet their specific needs.

With the principle of “Quality Parts,Customers Priority,Honest Operation,and Considerate Service”,our business mainly focus on the distribution of electronic components. Line cards we deal with include Microchip,ALPS,ROHM,Xilinx,Pulse,ON,Everlight and Freescale. Main products comprise IC,Modules,Potentiometer,IC Socket,Relay,Connector.Our parts cover such applications as commercial,industrial, and automotives areas.

We are looking forward to setting up business relationship with you and hope to provide you with the best service and solution. Let us make a better world for our industry!



## Contact us

Tel: +86-755-8981 8866 Fax: +86-755-8427 6832

Email & Skype: info@chipsmall.com Web: www.chipsmall.com

Address: A1208, Overseas Decoration Building, #122 Zhenhua RD., Futian, Shenzhen, China



# POWER INTEGRATED CIRCUIT

## Switching Regulator 15 Amp Positive and Negative Power Output Stages

PIC625  
 PIC626  
 PIC627  
 PIC635  
 PIC636  
 PIC637

### FEATURES

- Designed and characterized for switching regulator applications
- Cost saving design reduces size, improves efficiency, reduces noise and RFI (See note 4.)
- High operating frequency (to >100kHz) results in smaller inductor-capacitor filter and improved power supply response time
- High operating efficiency: Typical 7A circuit performance —  
 Rise and Fall time <300 ns  
 Efficiency >85%
- No reverse recovery spike generated by commutating diode (See note 4. and Fig. 2.)
- Electrically isolated, 4-Pin, TO66 hermetic case (500V, 1μA, all leads common)

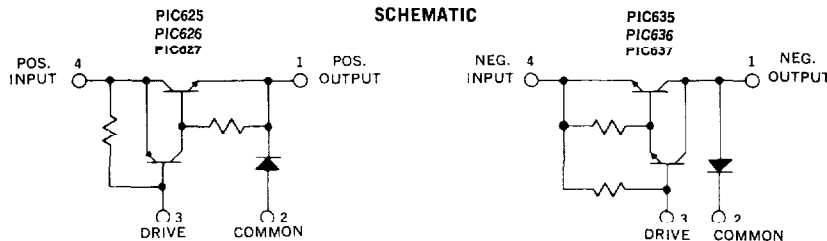
### DESCRIPTION

The Microsemi ESP Switching Regulator is a unique hybrid transistor circuit, specifically designed, constructed and specified for use in high current switching regulator applications. The designer is thus relieved of one of the most time consuming, tedious and critical aspects of switching regulator design: choosing the appropriate switching transistors and commutating diode and empirically determining the optimum drive and bias conditions.

Switching regulators, when compared to conventional regulators, result in significant reductions in size, weight and internal power losses and a major decrease in overall cost. Using the Microsemi PIC600 series, the designer can achieve further improvements in size, weight, efficiency and costs. At the same time, because of the PIC600 series design and packaging, the designer is aided in overcoming two of the most signifi-

cant drawbacks to switching regulators: noise generation and slow response time; there is, in fact, no diode reverse recovery spike (see note 4.).

The PIC600 series switching regulators are designed and characterized to be driven with standard integrated circuit voltage regulators. They are completely characterized over their entire operating range of -55°C to +125°C. The devices are enclosed in a special 4-pin TO-66 package, hermetically sealed for high reliability. The hybrid circuit construction utilizes thick film resistors on a beryllia substrate for maximum thermal conductivity and resultant low thermal impedance. All of the active elements in the hybrid are fully passivated.

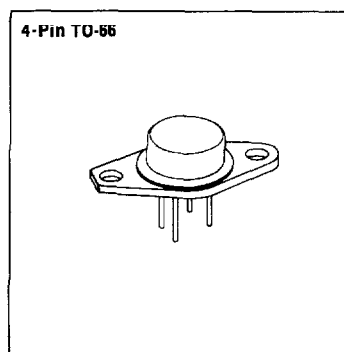


### MECHANICAL SPECIFICATIONS

**PIC625 PIC626 PIC627 PIC635 PIC636 PIC637**

**NOTES:**  
 1. Case is electrically isolated.  
 2. Leads may be soldered to within 1/16" of base provided temperature-time exposure is less than 200°C for 10 seconds.

	ino.	mm
A	620 MAX.	15.75 MAX.
B	050-075	1.27-1.91
C	028-034	0.71-0.85
D	958-962	24.33-24.43
E	100-210	4.00-5.33
F	190-210	4.63-5.33
G	350 MAX. RAD.	8.89 MAX. RAD.
H	570-590	14.48-14.95
J	142-152 DIA.	3.61-3.86 DIA.
K	050 MIN.	9.14 MIN.
L	250-340	6.35-8.64



**Microsemi Corp.**  
**Watertown**  
*The diode experts*

**ABSOLUTE MAXIMUM RATINGS**

	PIC625	PIC626	PIC627	PIC635	PIC636	PIC637
Input Voltage, $V_{4-2}$	60V	80V	100V	-60V	-80V	-100V
Output Voltage, $V_{1-2}$	60V	80V	100V	-60V	-80V	-100V
Drive-Input Reverse Voltage, $V_{3-4}$	5V	5V	5V	-5V	-5V	-5A
Output Current, $I_1$	15A	15A	15A	-15A	-15A	-15A
Drive Current, $I_3$	-0.4A	-0.4A	-0.4A	0.4A	0.4A	0.4A
<b>Thermal Resistance</b>						
Junction to Case, $\theta_{J-C}$						4.0°C/W
Power Switch						4.0°C/W
Commutating Diode						4.0°C/W
Case to Ambient, $\theta_{C-A}$						60.0°C/W
Operating Temperature Range, $T_C$						-55°C to +125°C
Maximum Junction Temperature, $T_J$						+150°C
Storage Temperature Range						-65°C to +150°C



**ELECTRICAL SPECIFICATIONS (at 25°C unless noted)**

Test	Symbol	PIC625/626/627			PIC635/636/637			Units	Conditions
		Min.	Typ.	Max.	Min.	Typ.	Max.		
Current Delay Time	$t_{di}$	—	35	60	—	35	60	ns	$V_{in} = 25V(-25V)$
Current Rise Time	$t_{ri}$	—	65	150	—	65	175	ns	$V_{out} = 5V(-5V)$
Voltage Rise Time	$t_{rv}$	—	40	60	—	40	60	ns	$I_{out} = 7A(-7A)$
Voltage Storage Time	$t_{sv}$	—	900	—	—	900	—	ns	$I_3 = -30mA(30mA)$ NOTE 5
Voltage Fall Time	$t_{fv}$	—	70	175	—	100	300	ns	See Figure 2
Current Fall Time	$t_{fr}$	—	175	300	—	175	300	ns	See notes 1, 2, 4
Efficiency (Notes 2 and 4)	$\eta$	—	85	—	—	85	—	%	
On-State Voltage (Note 3)	$V_{4-1(on)}$	—	1.0	1.5	—	-1.0	-1.5	V	$I_4 = 7A(-7A), I_3 = -.03A(.03A)$ NOTE 5
On-State Voltage (Note 3)	$V_{4-1(on)}$	—	2.5	3.5	—	-2.5	-3.5	V	$I_4 = 15A(-15A), I_3 = -.03A(.03A)$ NOTE 5
Diode Fwd. Voltage (Note 3)	$V_{2-1(on)}$	—	.85	1.25	—	-.85	-1.25	V	$I_2 = 7A(-7A)$
Diode Fwd. Voltage (Note 3)	$V_{2-1(on)}$	—	.95	1.75	—	-.95	-1.75	V	$I_2 = 15A(-15A)$
Off-State Current	$I_{4-1}$	—	0.1	10	—	-0.1	-10	$\mu A$	$V_4 =$ Rated input voltage
Off-State Current	$I_{4-1}$	—	10	—	—	-10	—	$\mu A$	$V_4 =$ Rated input voltage, $T_A = 100^\circ C$
Diode Reverse Current	$I_{1-2}$	—	1.0	10	—	-1.0	-10	$\mu A$	$V_1 =$ Rated output voltage
Diode Reverse Current	$I_{1-2}$	—	500	—	—	500	—	$\mu A$	$V_1 =$ Rated output voltage, $T_A = 100^\circ C$

- NOTES:**
- In switching an inductive load, the current will lead the voltage on turn-on and lag the voltage on turn-off (see Figure 2). Therefore, Voltage Delay Time ( $t_{dv}$ )  $\approx t_{di} + t_{ri}$  and Current Storage Time ( $t_{si}$ )  $\approx t_{sv} + t_{fv}$ .
  - The efficiency is a measure of internal power losses and is equal to Output Power divided by Input Power. The switching speed circuit of Figure 1, in which the efficiency is measured, is representative of typical operating conditions for the PIC625 series switching regulators.
  - Pulse test: Duration = 300 $\mu s$ , Duty Cycle  $\leq 2\%$ .
  - As can be seen from the switching waveforms shown in Figure 2, no reverse of forward recovery spike is generated by the commutating diode during switching! This reduces self-generated noise, since no current spike is fed through the switching regulator. It also improves efficiency and reliability, since the power switch only carries current during turn on.
  - To insure safe operation  $I_3$  should be  $\geq |30mA|$  during  $T_{ON}$ . Operation at  $I_3 < |30mA|$  can permanently damage device.

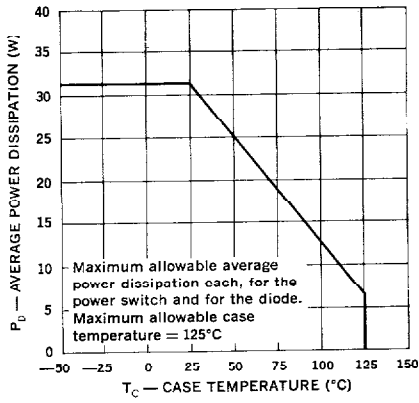
**POWER DISSIPATION CONSIDERATIONS**

The total power losses in the switching regulator is the sum of the switching losses, and the power switch and diode D.C. losses. Once total power dissipation has been determined, the Power Dissipation curve, or thermal resistance data may be used to determine the allowable case or ambient temperature for any operating condition.

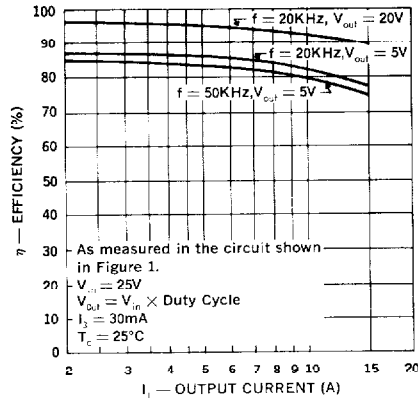
The switching losses curve presents data for a frequency of 20KHz. To find losses at any other frequency, multiply by  $f/20KHz$ . The D.C. losses curve presents data for a duty cycle of .2. To find D.C. losses at any other duty cycle, multiply by  $D/.2$  for the power switch and by  $(1-D)/.8$  for the diode.

At frequencies much below 10KHz the above method for determining the allowable case or ambient temperature becomes invalid and a detailed transient thermal analysis must be performed.

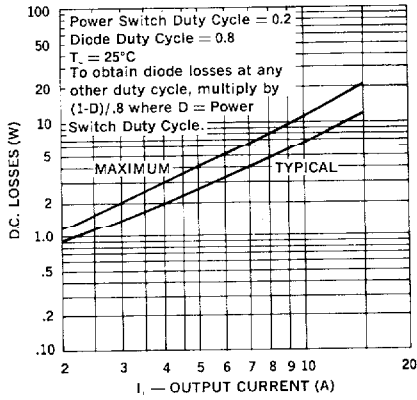
**Power Dissipation**



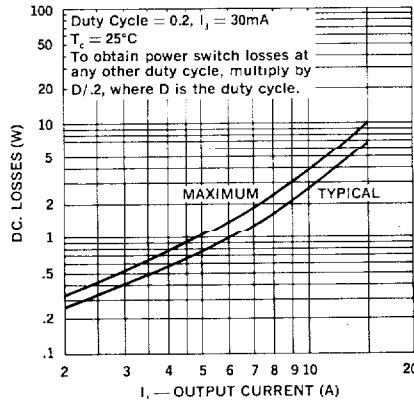
**Efficiency**



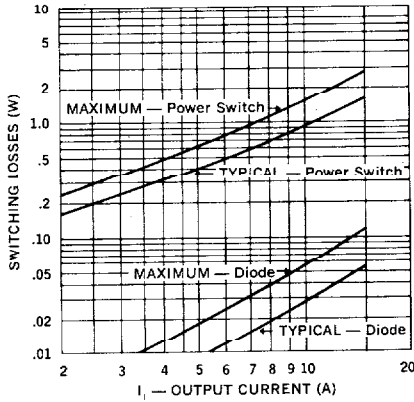
**Diode D.C. Losses**



**Power Switch D.C. Losses**

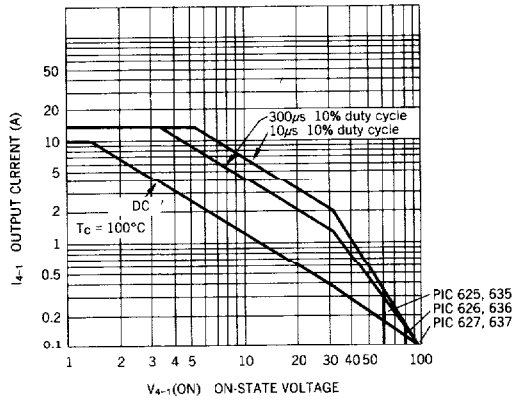


**Switching Losses**



To determine switching losses at any other frequency, multiply by f/20KHz where f is the frequency at which the losses are to be determined.

**Maximum Safe Operating Area  
PIC 625, 626, 627-635, 636, 637**



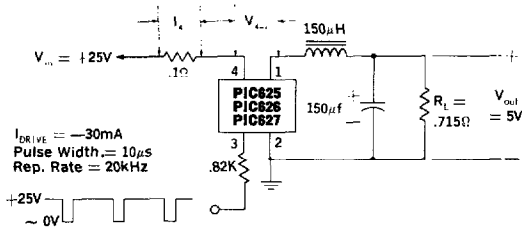


Figure 1. PIC625, 626, 627 Switching Speed Circuit

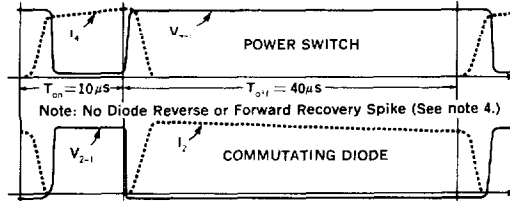


Figure 2. PIC625, 626, 627 Switching Waveforms

Note: PIC635, PIC636, PIC637 Circuit and waveforms are identical but of opposite polarity ( $V_{in} = -25V$ ,  $V_{out} = -5V$ ,  $I_{DRIVE} = +30mA$ .)

