



Chipsmall Limited consists of a professional team with an average of over 10 year of expertise in the distribution of electronic components. Based in Hongkong, we have already established firm and mutual-benefit business relationships with customers from,Europe,America and south Asia,supplying obsolete and hard-to-find components to meet their specific needs.

With the principle of "Quality Parts,Customers Priority,Honest Operation,and Considerate Service",our business mainly focus on the distribution of electronic components. Line cards we deal with include Microchip,ALPS,ROHM,Xilinx,Pulse,ON,Everlight and Freescale. Main products comprise IC,Modules,Potentiometer,IC Socket,Relay,Connector.Our parts cover such applications as commercial,industrial, and automotives areas.

We are looking forward to setting up business relationship with you and hope to provide you with the best service and solution. Let us make a better world for our industry!



## Contact us

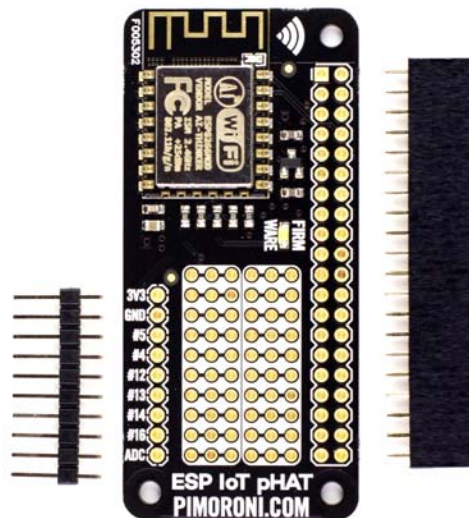
Tel: +86-755-8981 8866 Fax: +86-755-8427 6832

Email & Skype: info@chipsmall.com Web: www.chipsmall.com

Address: A1208, Overseas Decoration Building, #122 Zhenhua RD., Futian, Shenzhen, China



## ESP8266 pHAT PIM145



Tinker with WiFi on your Pi Zero with ESP8266 pHAT!

We've taken the ESP8266 (ESP-12F) module and added the necessary circuitry to allow it to interface cleanly with the Raspberry Pi via serial communication.

ESP8266 pHAT also provides some GPIO, and one ADC channel, that we've broken out for you to use alongside a small prototyping area where you can add sensors, or other components.

There is a thriving community building up around the ESP8266 platform with custom firmware, programming tools, and guides. Check out <http://www.esp8266.com/> for more information!

Richard Hayler has written a blog post about setting up your ESP8266 pHAT and communicating with it.

The MagPi described ESP8266 pHAT as *"one for serious IoT project makers"*.

## Features

- WiFi connectivity over serial (up to 1mbps)
- 802.11 b/g/n WiFi
- 80MHz 32-bit MCU
- 10-bit ADC (0 - 1V)
- WPA/WPA2 security support
- WEP/TKIP/AES encryption
- Compatible with Raspberry Pi 3, 2, B+, A+, Zero, and Zero W
- **Female and male header require soldering**

## Software

ESP8266 pHAT doesn't have a Python library, like most of our other HATs and pHATs, but instead requires commands to be passed over serial from a terminal emulator like Minicom.

Our getting started guide shows you exactly how to get everything set up, including installing and using Minicom, connecting to WiFi, and polling for data.

## Notes

- This module is not a replacement for a WiFi dongle! It is designed for people who wish to experiment with the ESP8266 platform - if you just want WiFi connectivity you'd be better off using the Official Raspberry Pi WiFi Dongle instead.
- Please be aware that some variants of the ESP8266 can have pins 4 and 5 reversed.