



Chipsmall Limited consists of a professional team with an average of over 10 year of expertise in the distribution of electronic components. Based in Hongkong, we have already established firm and mutual-benefit business relationships with customers from,Europe,America and south Asia,supplying obsolete and hard-to-find components to meet their specific needs.

With the principle of “Quality Parts,Customers Priority,Honest Operation,and Considerate Service”,our business mainly focus on the distribution of electronic components. Line cards we deal with include Microchip,ALPS,ROHM,Xilinx,Pulse,ON,Everlight and Freescale. Main products comprise IC,Modules,Potentiometer,IC Socket,Relay,Connector.Our parts cover such applications as commercial,industrial, and automotives areas.

We are looking forward to setting up business relationship with you and hope to provide you with the best service and solution. Let us make a better world for our industry!



Contact us

Tel: +86-755-8981 8866 Fax: +86-755-8427 6832

Email & Skype: info@chipsmall.com Web: www.chipsmall.com

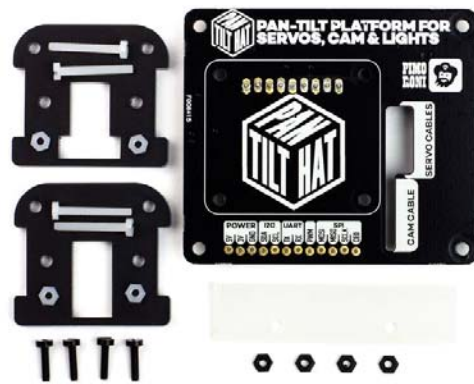
Address: A1208, Overseas Decoration Building, #122 Zhenhua RD., Futian, Shenzhen, China



Pan-Tilt HAT



Full kit PIM183



without Pan-Tilt module PIM250

Ideal for a mini CCTV system, this set of horizontal and vertical motion servos will give you Pi camera movement with a minimum of fuss.

Pan-Tilt HAT lets you mount and control one of our pan-tilt modules right on top of your Raspberry Pi. The HAT and its on-board microcontroller let you independently drive the two servos (pan and tilt), as well as driving up to 24 regular LED (with PWM control) or NeoPixel RGB (or RGBW) LEDs. There's also a handy slot through which you can route the servo, LED, and camera cables. The module pans and tilts through 180 degrees in each axis.

Use Pan-Tilt HAT with a Pi camera for face-tracking. Or mount it on top of your roving robot as a set of eyes. Why not stick a foam sword on top and make it swashbuckle?!

There's absolutely no soldering required (unless you decide to use the optional NeoPixel strip or ring), as the servos on the pan-tilt module have female jumper wires attached and we've soldered a strip of right-angled header pins to the underside of the HAT to connect them up.

We've also included a handy little acrylic camera mount to hold your camera snugly in the head of the pan-tilt module. The mount has a couple of mounting holes at the top to hold a NeoPixel stick and there's a neat little frosted diffuser to make the light super-dreamy. :-) We suggest one of the Adafruit RGBW NeoPixel sticks, as they give a lovely pure white (or any other colour!)

Note that the Pi camera, NeoPixel strip, male header, female to female jumper wires, Pi 3 and Pibow are not included. You'll need to pick them up separately!

The MagPi said, in their four star review, that Pan-Tilt HAT was a *"highly enjoyable and extremely cute accessory"*.

Features

- Pan-tilt module (180 degrees motion through each axis) with two servos
- HAT with two servo channels, one PWM or NeoPixel RGB (or RGBW) LED channel
- Right-angled header pre-soldered to underside of HAT for servo and LED channels
- Slot to route servo, LED, and camera cables through
- Acrylic mount to hold Pi camera and NeoPixel strip (with diffuser) in place
- Compatible with Raspberry Pi 3, 2, B+, A+, Zero, and Zero W
- Python library
- Comes fully assembled

Software

We've put together a super-simple Python library to make it super-easy to control Pan-Tilt HAT. Just tell Pan-Tilt HAT to which angle you'd like it to pan or tilt (from -90 to +90 degrees) and away it goes! There's even a couple of examples showing you how to pan and tilt, and control connected NeoPixels.

Notes

- The servos draw a lot of current, thus we recommend a good quality 2.5A power supply like the official Raspberry Pi power supply.
- Pi camera, NeoPixel strip, male header, female to female jumper wires, Pi 3 and Pibow are not included.
- Connect the brown wires of the servo cables to the GND pins on the servo channels.
- Servo channel 1 controls pan and servo channel 2 controls tilt, although you can easily swap these in software.