



Chipsmall Limited consists of a professional team with an average of over 10 year of expertise in the distribution of electronic components. Based in Hongkong, we have already established firm and mutual-benefit business relationships with customers from,Europe,America and south Asia,supplying obsolete and hard-to-find components to meet their specific needs.

With the principle of “Quality Parts,Customers Priority,Honest Operation,and Considerate Service”,our business mainly focus on the distribution of electronic components. Line cards we deal with include Microchip,ALPS,ROHM,Xilinx,Pulse,ON,Everlight and Freescale. Main products comprise IC,Modules,Potentiometer,IC Socket,Relay,Connector.Our parts cover such applications as commercial,industrial, and automotives areas.

We are looking forward to setting up business relationship with you and hope to provide you with the best service and solution. Let us make a better world for our industry!



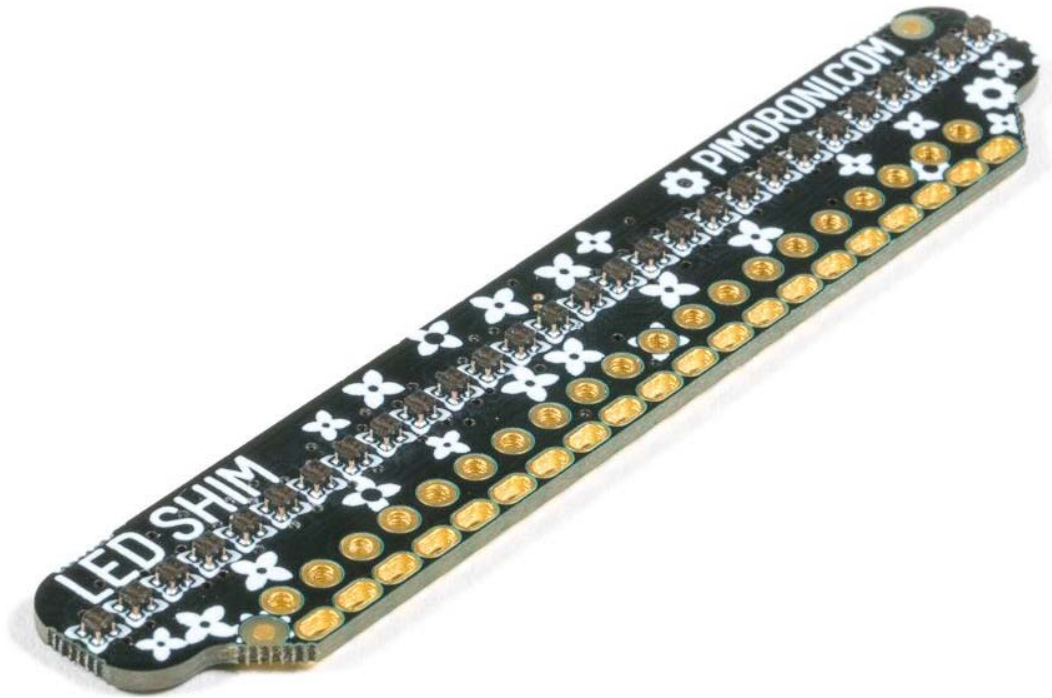
Contact us

Tel: +86-755-8981 8866 Fax: +86-755-8427 6832

Email & Skype: info@chipsmall.com Web: www.chipsmall.com

Address: A1208, Overseas Decoration Building, #122 Zhenhua RD., Futian, Shenzhen, China





LED SHIM

28 tiny RGB LED pixels in a single row that just slip right onto your Pi's pins, no soldering required! LED SHIM is ideal for status updates, notifications, a VU meter, or as a bar graph for sensor readings.

- PIM354

The really nifty thing about LED SHIM is that it doesn't require any soldering. We've engineered a new friction-fit header that slips securely onto the Pi's pins. Because LED SHIM's PCB is just 0.8mm thick, like our other SHIMs, you can use it at the same time as HATs and pHATs, and it'll stick out and be visible at the top of your Pi.

Of course, if you want to solder LED SHIM to your Pi's pins or solder a female header to it, then you can do that too.

These are similar (but even smaller) to the RGB LEDs that we use on Unicorn HAT HD, being driven by the same IS31FL3731 LED matrix driver chip that's on Scroll pHAT HD. Coding LED SHIM is just like coding a Blink! with more pixels, so if you've used Blink! then it'll be very familiar to you.

Features

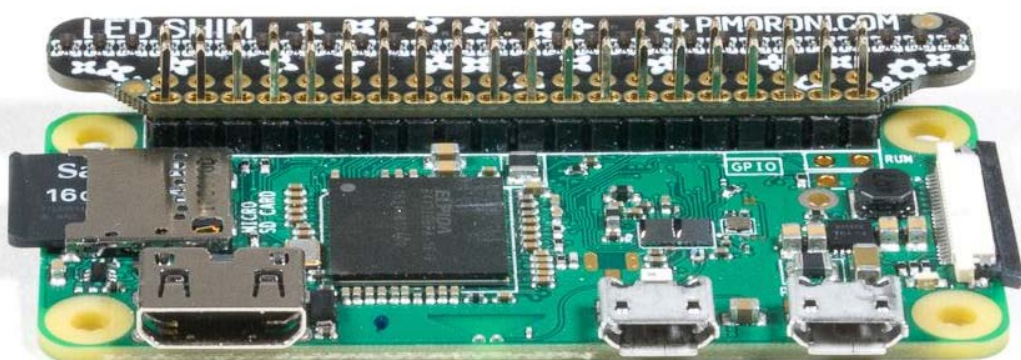
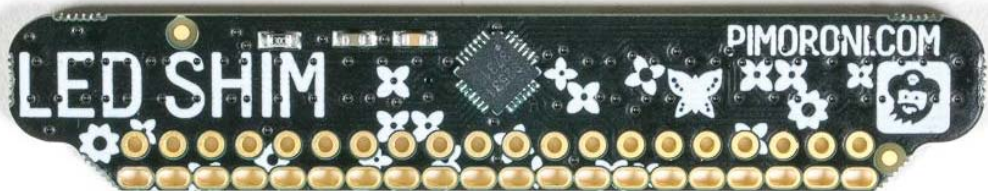
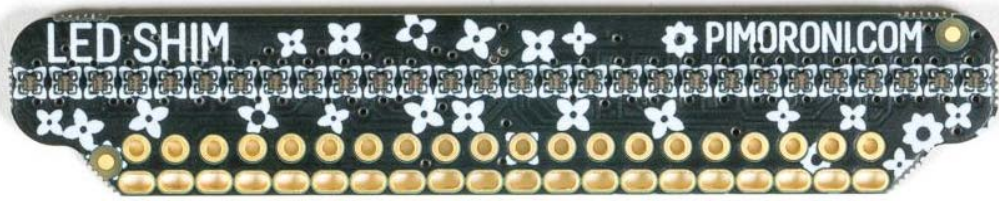
- 28 RGB LED pixels
- IS31FL3731 LED matrix driver chip
- Solderless, friction-fit header
- Super-slim SHIM-format board
- 0.8mm thick PCB
- Can be used with HATs and pHATs
- Compatible with Raspberry Pi 3+, 3, 2, B+, A+, Zero, and Zero W
- Python library

Software

We've put together a one-line installer to install the LED SHIM Python library. You'll be up-and-running in a jiffy! There's a bunch of example programs to show you what's possible with LED SHIM, that you can learn from and adapt to your needs.

To install the software, open a terminal and type `curl https://get.pimoroni.com/ledshim | bash` to run the one-line-installer.

Our software does not support Raspbian Wheezy.



<https://shop.pimoroni.com/products/led-shim#description> 6-11-18