



Chipsmall Limited consists of a professional team with an average of over 10 year of expertise in the distribution of electronic components. Based in Hongkong, we have already established firm and mutual-benefit business relationships with customers from,Europe,America and south Asia,supplying obsolete and hard-to-find components to meet their specific needs.

With the principle of “Quality Parts,Customers Priority,Honest Operation,and Considerate Service”,our business mainly focus on the distribution of electronic components. Line cards we deal with include Microchip,ALPS,ROHM,Xilinx,Pulse,ON,Everlight and Freescale. Main products comprise IC,Modules,Potentiometer,IC Socket,Relay,Connector.Our parts cover such applications as commercial,industrial, and automotives areas.

We are looking forward to setting up business relationship with you and hope to provide you with the best service and solution. Let us make a better world for our industry!



## Contact us

Tel: +86-755-8981 8866 Fax: +86-755-8427 6832

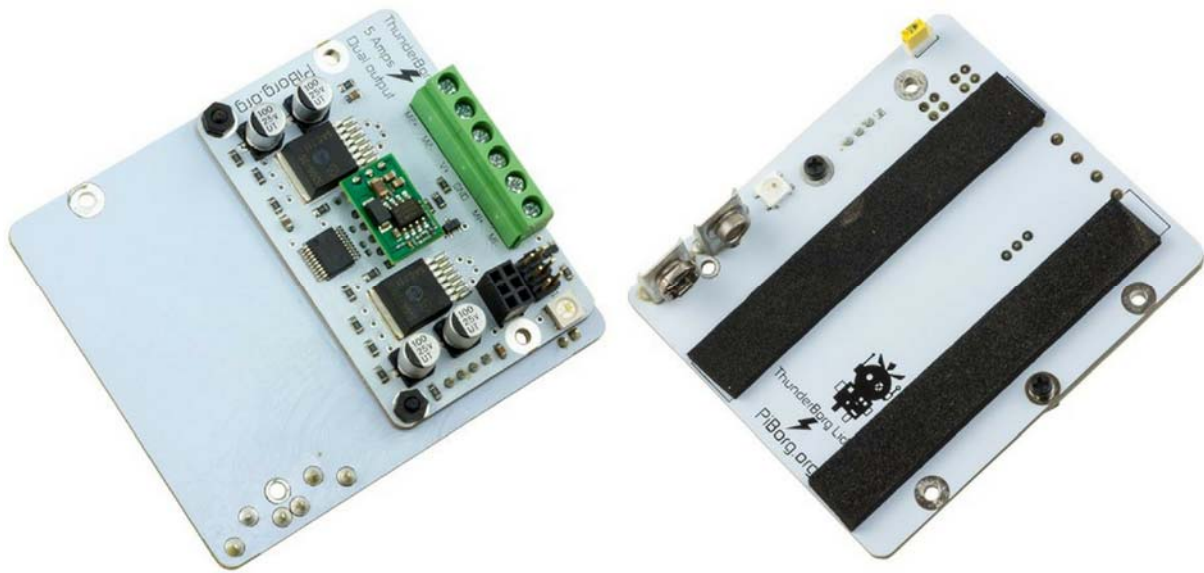
Email & Skype: info@chipsmall.com Web: www.chipsmall.com

Address: A1208, Overseas Decoration Building, #122 Zhenhua RD., Futian, Shenzhen, China





Pi Supply



## ThunderBorg with Lid - Dual 5A Motor Controller & Power Connector

ThunderBorg is a powerful dual motor control board for making awesome robots with your Raspberry Pi. The ThunderBorg is used in our MonsterBorg robot kit.

This version has the optional ThunderBoard Lid which comes with:

- A second super bright LED which can be independently controlled
- 9V style connector for either AA battery packs or 9V batteries
- Convenient power switch to disconnect the batteries
- Enough room to sit a 10x AA battery pack
- Pre-soldered directly onto the ThunderBorg by us.

All ThunderBorg versions include:

- Control BIG or small motors.
- On-board 5V regulator powers the Raspberry Pi
- Runs from any battery pack or power supply from 7V to 35V
- Proper 5A output per motor connection
- Speed control forwards and reverse
- On-board voltage monitoring for attached batteries
- Mounts directly onto most Raspberry Pi models
- Super bright LED capable of over 16 million colours
- Plug in more boards to control up to 200 motors!
- Controls 4, 5 or 6 wire stepper motors

We also have ThunderBorg without the optional lid here.