



Chipsmall Limited consists of a professional team with an average of over 10 year of expertise in the distribution of electronic components. Based in Hongkong, we have already established firm and mutual-benefit business relationships with customers from,Europe,America and south Asia,supplying obsolete and hard-to-find components to meet their specific needs.

With the principle of “Quality Parts,Customers Priority,Honest Operation,and Considerate Service”,our business mainly focus on the distribution of electronic components. Line cards we deal with include Microchip,ALPS,ROHM,Xilinx,Pulse,ON,Everlight and Freescale. Main products comprise IC,Modules,Potentiometer,IC Socket,Relay,Connector.Our parts cover such applications as commercial,industrial, and automotives areas.

We are looking forward to setting up business relationship with you and hope to provide you with the best service and solution. Let us make a better world for our industry!



Contact us

Tel: +86-755-8981 8866 Fax: +86-755-8427 6832

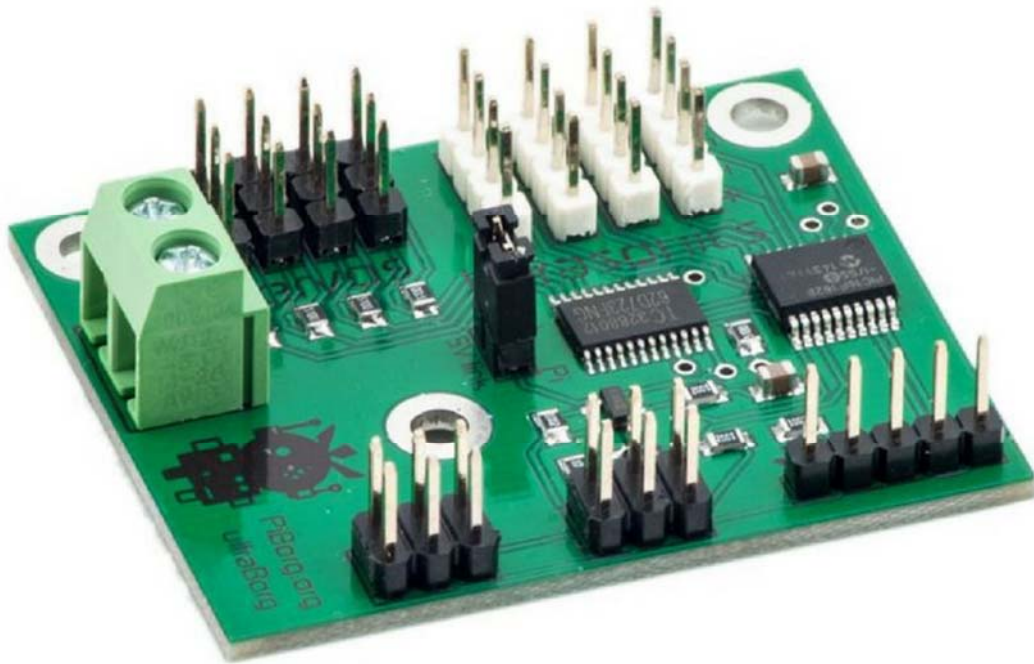
Email & Skype: info@chipsmall.com Web: www.chipsmall.com

Address: A1208, Overseas Decoration Building, #122 Zhenhua RD., Futian, Shenzhen, China





Pi Supply



UltraBorg - PWM Servo Control w/ Ultrasonic Sensor Support

UltraBorg is a great way to get servos and ultrasonic sensors connected to your Raspberry Pi without the hassle of complicated code and wiring - simply plug in servos and sensors and you're ready to go! :)

You can even control your servos and read distances straight from your phone or PC using our Web UI.

This purchase is for 1x UltraBorg and 2x i2c interface cables only. See the full selection of UltraBorg kits [here](#).

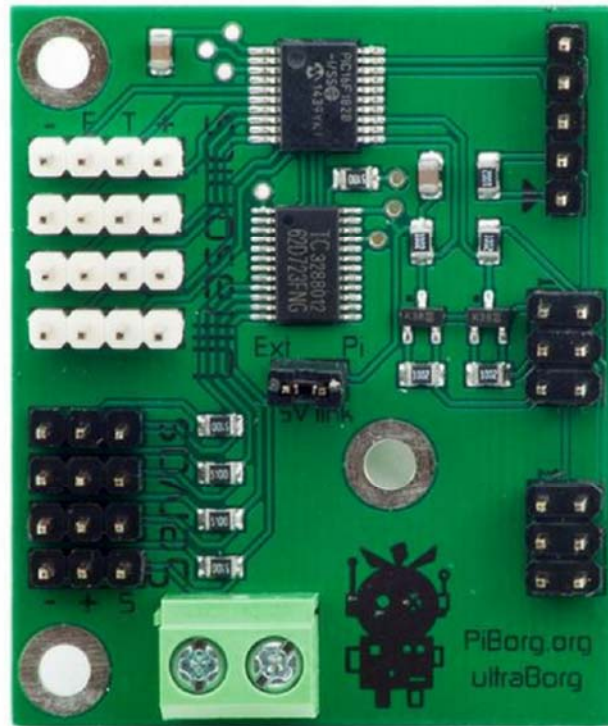
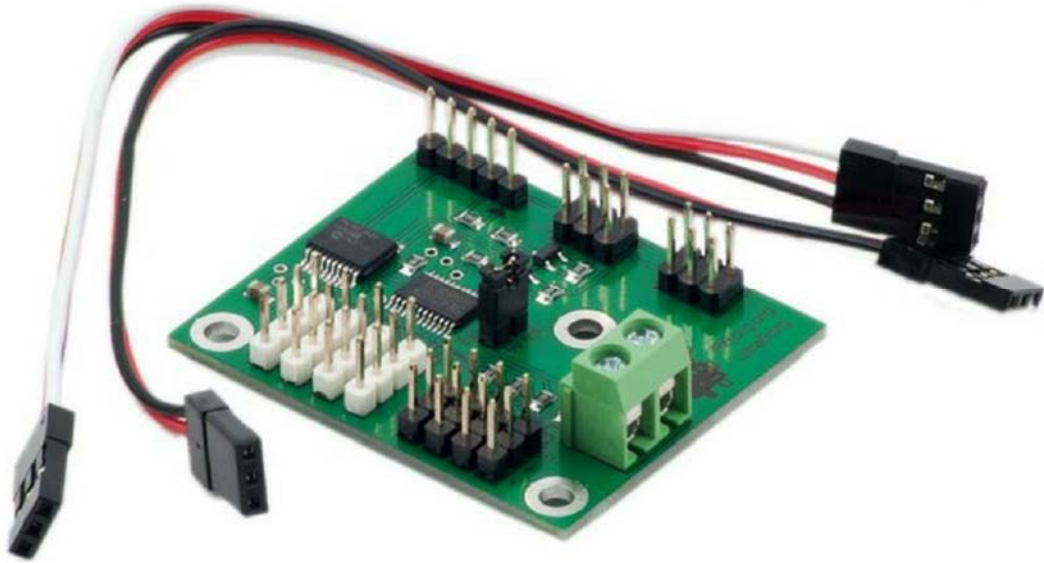
UltraBorg Features:

- Compatible with all flavours of Raspberry Pi (B+/2/3/Zero/ZeroW), Arduino and other i2c compatible devices
- **Servo Control**
 - 4x Precision 16 bit PWM outputs
 - Controls up to 4 Servos simultaneously
 - Allows saving in EEPROM of power up, max, and min limit positions
- **Ultrasonic Interfaces**
 - Interfaces with up to 4x HC-SR04 ultrasonic modules
 - Read all 4 simultaneously
 - Controlled by microprocessor so software timing not required
- Features external 5V connector to separately power Servo/USM and Pi.
- Can be linked for sharing power with Pi*.
- Supports optional BattBorg to power Raspberry Pi from battery source (Not Included)

*please note if you are using servos, it is recommended to power the UltraBorg separately.

To get started

- Simply plug in 5V source or a 4xAA battery pack into power
- Plug servo motors into servo connectors
- Plug HC-SR04 modules into Ultrasonic connector with 4pin cable
- Plug I2C cables into Raspberry Pi
- Run software



<https://uk.pi-supply.com/products/ultraborg-pwm-servo-control-w-ultrasonic-sensor-support> 7-26-18