



Chipsmall Limited consists of a professional team with an average of over 10 year of expertise in the distribution of electronic components. Based in Hongkong, we have already established firm and mutual-benefit business relationships with customers from,Europe,America and south Asia,supplying obsolete and hard-to-find components to meet their specific needs.

With the principle of "Quality Parts,Customers Priority,Honest Operation,and Considerate Service",our business mainly focus on the distribution of electronic components. Line cards we deal with include Microchip,ALPS,ROHM,Xilinx,Pulse,ON,Everlight and Freescale. Main products comprise IC,Modules,Potentiometer,IC Socket,Relay,Connector.Our parts cover such applications as commercial,industrial, and automotives areas.

We are looking forward to setting up business relationship with you and hope to provide you with the best service and solution. Let us make a better world for our industry!



Contact us

Tel: +86-755-8981 8866 Fax: +86-755-8427 6832

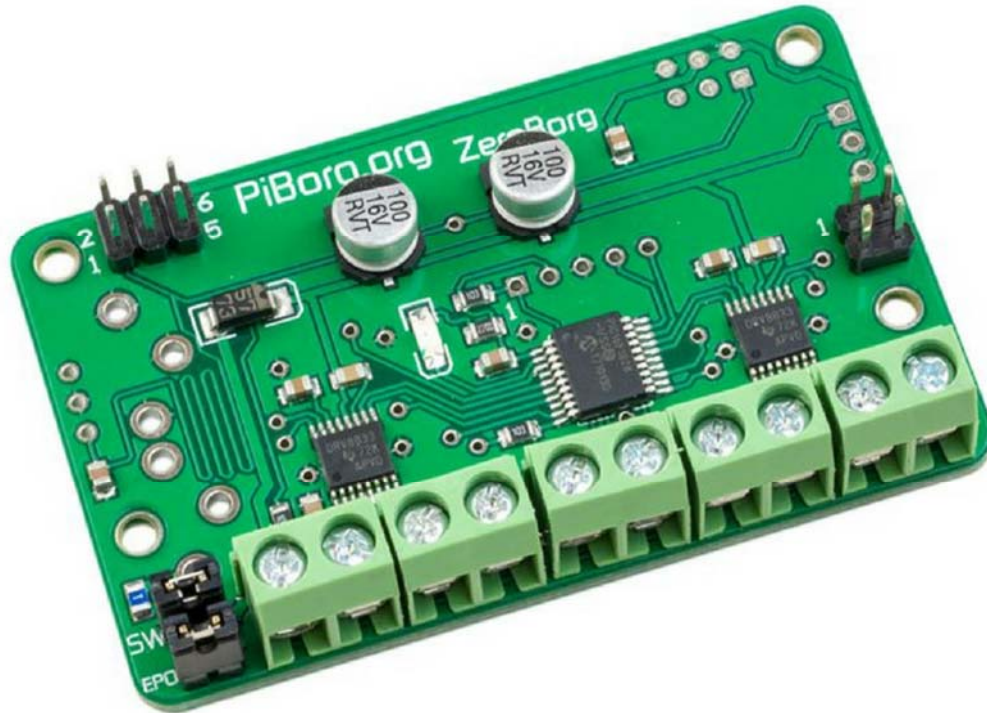
Email & Skype: info@chipsmall.com Web: www.chipsmall.com

Address: A1208, Overseas Decoration Building, #122 Zhenhua RD., Futian, Shenzhen, China





Pi Supply



ZeroBorg Basic - Quad Motor Controller

The ZeroBorg is our add on board for controlling motors using the Raspberry Pi Zero. It's small size means it fits neatly below a Raspberry Pi Zero and opens up endless possibilities for tiny robot designs. The ZeroBorg can control up to 4 motors independently and is stackable via I2C, so you can keep adding ZeroBorgs (and our other compatible I2C boards) to control additional motors!

ZeroBorg is fully customisable, so you can match your ZeroBorg to your project you're making! The following optional add-ons are compatible with the ZeroBorg:

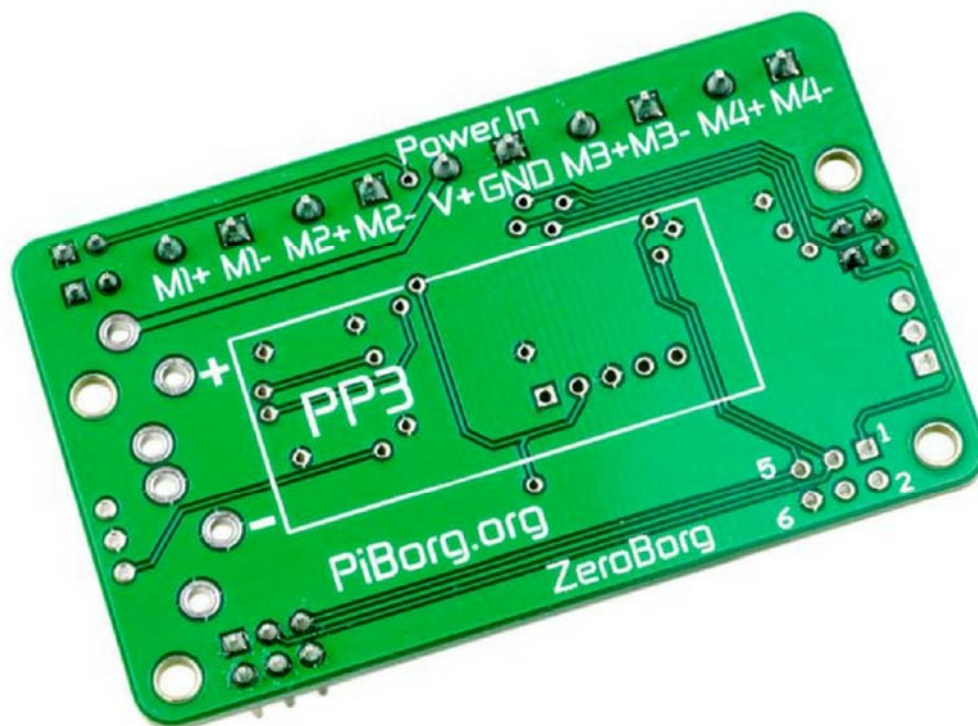
- A 5V DC/DC regulator to power the Pi as well as the motors,
- An infrared sensor to control the motors via an infrared remote control,
- A 9V battery clip to power the Pi and the motors.

The ZeroBorg "Basic" has none of the above optional add-ons, it is the ZeroBorg Motor Controller Board only. We also provide the ZeroBorg with all the additional components soldered so you can plug in your robot and go!

ZeroBorg Specifications

Each ZeroBorg has:

- 4 full H-Bridges
- Capability of driving 4 motors or 2 stepper motors
- 2A peak or 1.5A RMS per bridge
- An on board fast blow fuse at 5A
- Designed to run off a 9V power source Max range 2.7V to 10.8V (To power the RPi Zero 7V minimum)
- 2 analogue inputs, which are great for sensors
- I2C communication, allowing daisy chaining to other boards
- Fully soldered and ready to use.



<https://uk.pi-supply.com/products/zeroborg-basic-quad-motor-controller7-26-18>