



Chipsmall Limited consists of a professional team with an average of over 10 year of expertise in the distribution of electronic components. Based in Hongkong, we have already established firm and mutual-benefit business relationships with customers from,Europe,America and south Asia,supplying obsolete and hard-to-find components to meet their specific needs.

With the principle of "Quality Parts,Customers Priority,Honest Operation,and Considerate Service",our business mainly focus on the distribution of electronic components. Line cards we deal with include Microchip,ALPS,ROHM,Xilinx,Pulse,ON,Everlight and Freescale. Main products comprise IC,Modules,Potentiometer,IC Socket,Relay,Connector.Our parts cover such applications as commercial,industrial, and automotives areas.

We are looking forward to setting up business relationship with you and hope to provide you with the best service and solution. Let us make a better world for our industry!



Contact us

Tel: +86-755-8981 8866 Fax: +86-755-8427 6832

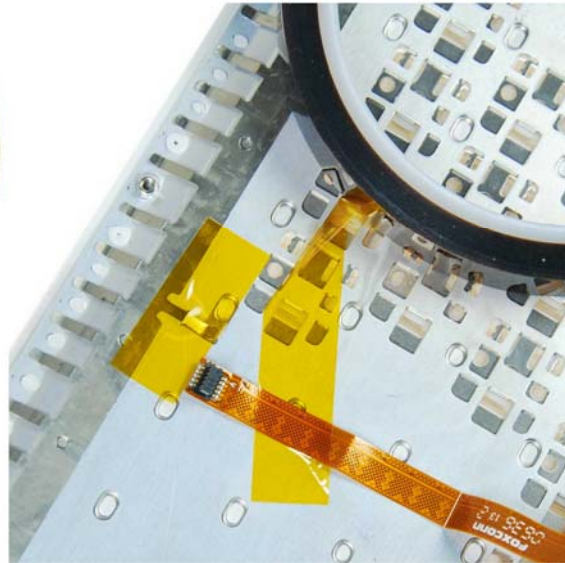
Email & Skype: info@chipsmall.com Web: www.chipsmall.com

Address: A1208, Overseas Decoration Building, #122 Zhenhua RD., Futian, Shenzhen, China





Pi Supply



iFixit Polyimide Tape

108 foot roll of Polyimide tape.

Polyimide tape is utilized in electronic components for space exploration as well as Apple products. It is a low-outgassing material with high temperature resistance, excellent thermal conductivity, and low radiation interference. Indispensable as masking in wave soldering and powder coating, Polyimide's properties make it ideal for electric insulation in X-Ray devices and radioactive environments too. Kapton is the perfect super tape for any space age atomic sci-fi mad scientist application.

Note: Does not block X-Ray vision or Kryptonite rays, red or green.*

Our Polyimide tape is a perfect match for the .5" width tape most often used by Apple (# 922-1731). You may only need a few inches, but this 108 foot roll is priced cheap enough to share with your friends or keep it as a lifetime supply!

*We recommend thorough testing by individual super heroes.

This tape is compatible with the properties of and can be used in place of 3M Kapton® polyimide tape part# KPT-1/2.