



Chipsmall Limited consists of a professional team with an average of over 10 year of expertise in the distribution of electronic components. Based in Hongkong, we have already established firm and mutual-benefit business relationships with customers from,Europe,America and south Asia,supplying obsolete and hard-to-find components to meet their specific needs.

With the principle of "Quality Parts,Customers Priority,Honest Operation,and Considerate Service",our business mainly focus on the distribution of electronic components. Line cards we deal with include Microchip,ALPS,ROHM,Xilinx,Pulse,ON,Everlight and Freescale. Main products comprise IC,Modules,Potentiometer,IC Socket,Relay,Connector.Our parts cover such applications as commercial,industrial, and automotives areas.

We are looking forward to setting up business relationship with you and hope to provide you with the best service and solution. Let us make a better world for our industry!



Contact us

Tel: +86-755-8981 8866 Fax: +86-755-8427 6832

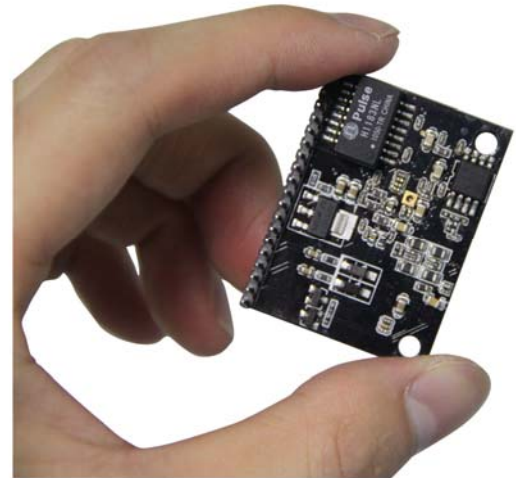
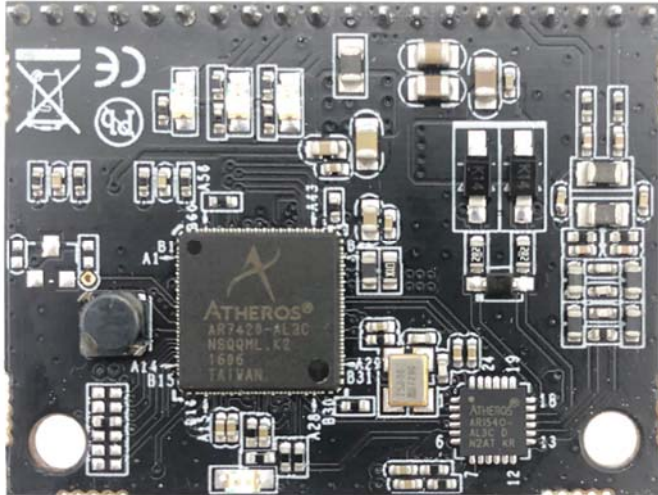
Email & Skype: info@chipsmall.com Web: www.chipsmall.com

Address: A1208, Overseas Decoration Building, #122 Zhenhua RD., Futian, Shenzhen, China





Pi Supply



LX200V30 HomePlug AV power line module - super high speed up to 500Mbps Network Adapter (QCA7420 based) with power line / twisted pair / Ethernet interface

LX200V30 is a new type of data transmission product based on OFDM (Orthogonal Frequency Division Multiplexing). The maximum transmission rate of power lines can reach 500Mbps, and standard Ethernet ports, as well as the two interfaces of twisted pair and coaxial cable are provided.

Support 128-bit AES encryption, communicate via frequency band of 2~30MHz, and the existing CATV signal or wired broadcasting is not affected.

It can be put into work after the wiring is completed without any user configuration. This will advance the product's time-to-market and increase the flexibility of product functionality.

Features

- Media (multiple transmission media are supported)
 - Power line: Complete the last 300 meters of IP access.
 - Twisted pair: Complete the last 600 meters of IP access.
 - Coaxial cable: Complete the last 2,000 meters of IP access.
- Speed
 - Transmission rate can reach up to 500Mbps;
 - Smooth transmission of IPTV, HDTV and other audio and video signal.
- Reliable
 - 128 bit AES encryption is supported to protect network communication security.
 - Communicate via frequency band of 2-30MHz, and the existing CATV signal or wired broadcasting is not affected.
 - Follow the IEEE 1901 and HomePlug AV standard, and a maximum of 4 modules can be carried. If to communicate with LX200V10, one LX200V10 supports up to 63 LX200V30 to connect the network.
- Simple
 - It can be used after the completion of cable-connecting without user configuration.
 - There is special management configuration software, making it easy for network division and networking.
 - Modular design makes it easy to integrate into customer products

Applications

LX200V30 can be widely used in the industry and smart home systems, and is a good complement to Ethernet and WIFI, so as to achieve the purpose of hybrid networking and seamless networking. At present, it plays a great role in smart home, monitoring, medical equipment networking and other scenarios.

LX200V30 Module

As shown below, LX200V30 module is small in size which is 40x30mm. It can be used with WISPLC PRO backplane to transmit at a physical layer rate of up to 500Mbps. It is easy to connect with a product in design through the network cable, which will speed up the time-to-market and the flexibility of product functionality.

