



Chipsmall Limited consists of a professional team with an average of over 10 year of expertise in the distribution of electronic components. Based in Hongkong, we have already established firm and mutual-benefit business relationships with customers from,Europe,America and south Asia,supplying obsolete and hard-to-find components to meet their specific needs.

With the principle of “Quality Parts,Customers Priority,Honest Operation,and Considerate Service”,our business mainly focus on the distribution of electronic components. Line cards we deal with include Microchip,ALPS,ROHM,Xilinx,Pulse,ON,Everlight and Freescale. Main products comprise IC,Modules,Potentiometer,IC Socket,Relay,Connector.Our parts cover such applications as commercial,industrial, and automotives areas.

We are looking forward to setting up business relationship with you and hope to provide you with the best service and solution. Let us make a better world for our industry!



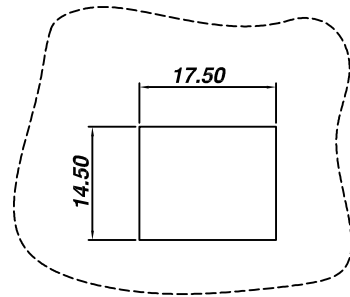
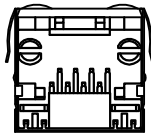
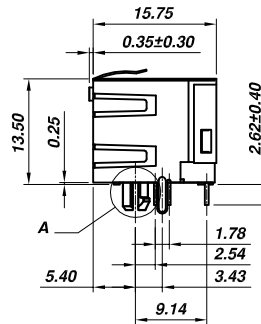
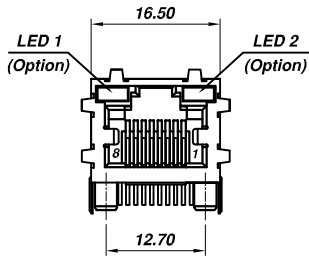
Contact us

Tel: +86-755-8981 8866 Fax: +86-755-8427 6832

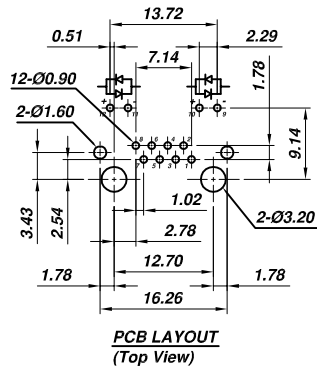
Email & Skype: info@chipsmall.com Web: www.chipsmall.com

Address: A1208, Overseas Decoration Building, #122 Zhenhua RD., Futian, Shenzhen, China

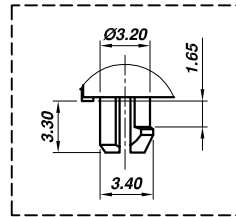




Recommended Panel Cutout



**PCB LAYOUT
(Top View)**



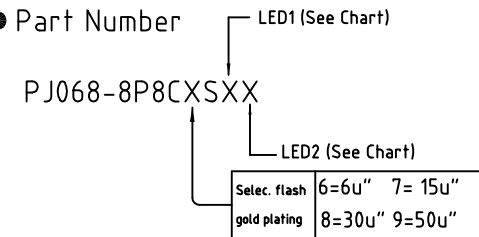
A(2:1)

Material:

- Housing: Nylon (UL 94V-0)
 - Color: Black
 - Spring Wire: 0.35mm Diameter Phosphor Bronze
Gold Plating over Nickel
 - Temp. Range: -40°C/+85°C
 - Soldering Temp: 235°C
 - Durability: 500 Mating cycles Min.
- Electrical:**
- Current rating: 1.5A Max.
 - Voltage rating: 120V AC
 - Insulation Resistance: 500 M Ω Min.
 - Contact Resistance: 20m Ω Max.
 - Dielectric Voltage: 1,000 Vrms for 60 sec. min.

RoHS Compliant

● Part Number



LED Designation:

Code	Forward	Reverse	Code	Forward	Reverse
G	Green	—	4	Yellow	Red
Y	Yellow	—	5	Green	Yellow
R	Red	—	6	Yellow	Green
O	Orange	—	9	Red	Green
3	Green	Red	0	Red	Yellow

THESE DRAWINGS AND SPECIFICATIONS ARE THE PROPERTY OF ON-SHORE TECHNOLOGY, INC. AND SHALL NOT BE REPRODUCED, COPIED OR USED IN ANY MANNER WITHOUT THE PRIOR WRITTEN CONSENT OF ON-SHORE TECHNOLOGY, INC.



ON-SHORE TECHNOLOGY, INC.

TITLE PJ068, side entry, shielded, SMT, w/LEDs, 8pos, 8 cont, grounding tabs							
PART NO. PJ068-8P8CX SXX		DWG NO. PJ068-8P8CX SXX.DWG					
APPROVED	CHECKED	DESIGNED	DRAWN	CUST NO.	Tolerance		
Billy 2012.01.01	Johnn 2012.06.01	Tony 2012.06.01	Steven 2012.06.01			UNIT: mm	X.XX ±0.25
						SCALE: NONE	X.XXX ±0.13
SHEET: 01/01					REV: A	X.XXXX ±0.05	