



Chipsmall Limited consists of a professional team with an average of over 10 year of expertise in the distribution of electronic components. Based in Hongkong, we have already established firm and mutual-benefit business relationships with customers from,Europe,America and south Asia,supplying obsolete and hard-to-find components to meet their specific needs.

With the principle of “Quality Parts,Customers Priority,Honest Operation,and Considerate Service”,our business mainly focus on the distribution of electronic components. Line cards we deal with include Microchip,ALPS,ROHM,Xilinx,Pulse,ON,Everlight and Freescale. Main products comprise IC,Modules,Potentiometer,IC Socket,Relay,Connector.Our parts cover such applications as commercial,industrial, and automotives areas.

We are looking forward to setting up business relationship with you and hope to provide you with the best service and solution. Let us make a better world for our industry!



Contact us

Tel: +86-755-8981 8866 Fax: +86-755-8427 6832

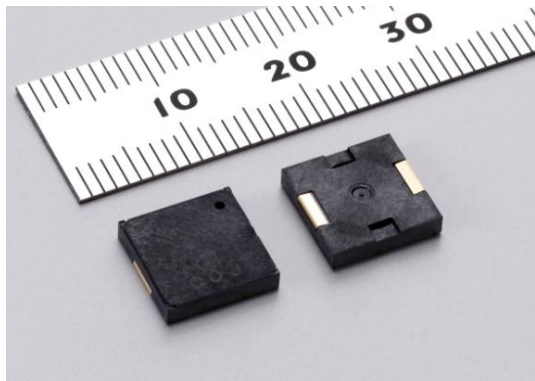
Email & Skype: info@chipsmall.com Web: www.chipsmall.com

Address: A1208, Overseas Decoration Building, #122 Zhenhua RD., Futian, Shenzhen, China



Piezoelectric SMD Sounder

- For consumer & Medical market -



Application

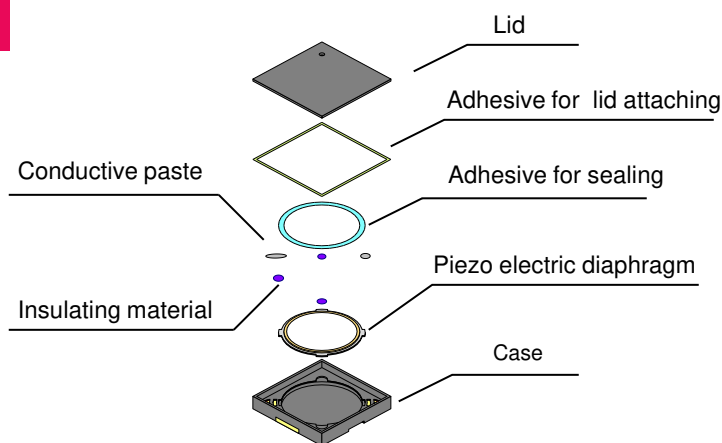
For consumer and medical market.

- **Consumer** : Remote controller
Mobile printer
Payment terminal
Digital still camera etc...
- **Medical** : Blood glucose meter
Thermometer etc...

RoHS

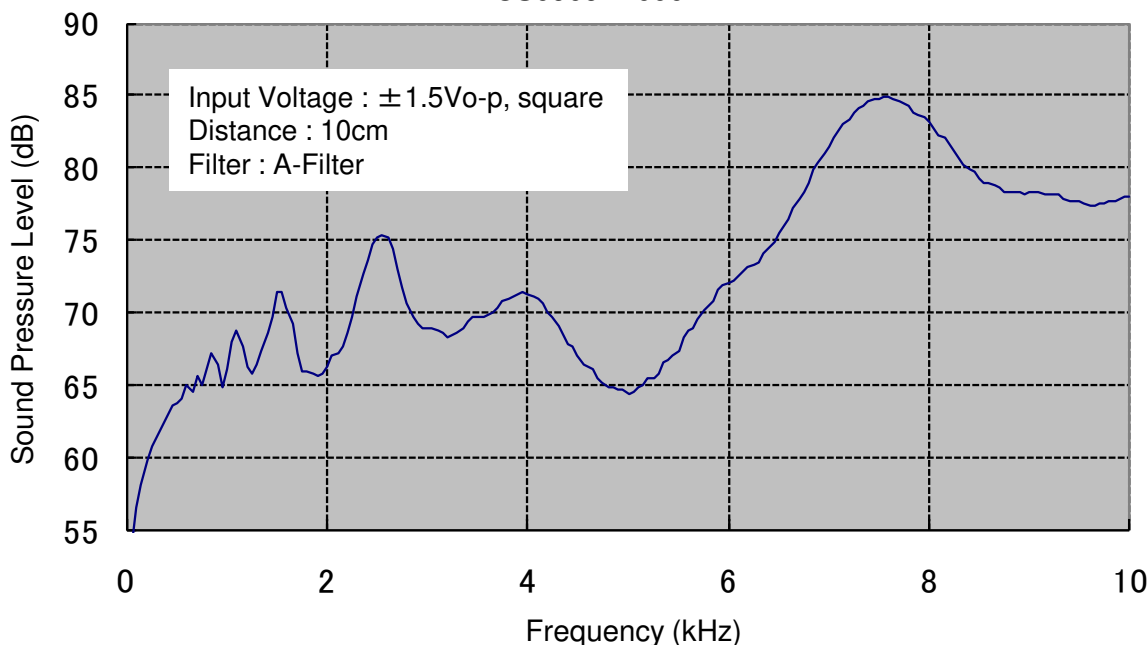
Feature and Structure

- ✓ **Small, thin and lightweight**
9.0mm x 9.0mm x 1.9mm
44% less than current one
- ✓ **Low power consumption**
- ✓ **The piezo based brings in noiseless because of magnet less**



Sound Pressure Level

Frequency Characteristics of Sound Pressure Level
PKMCS0909E4000-R1



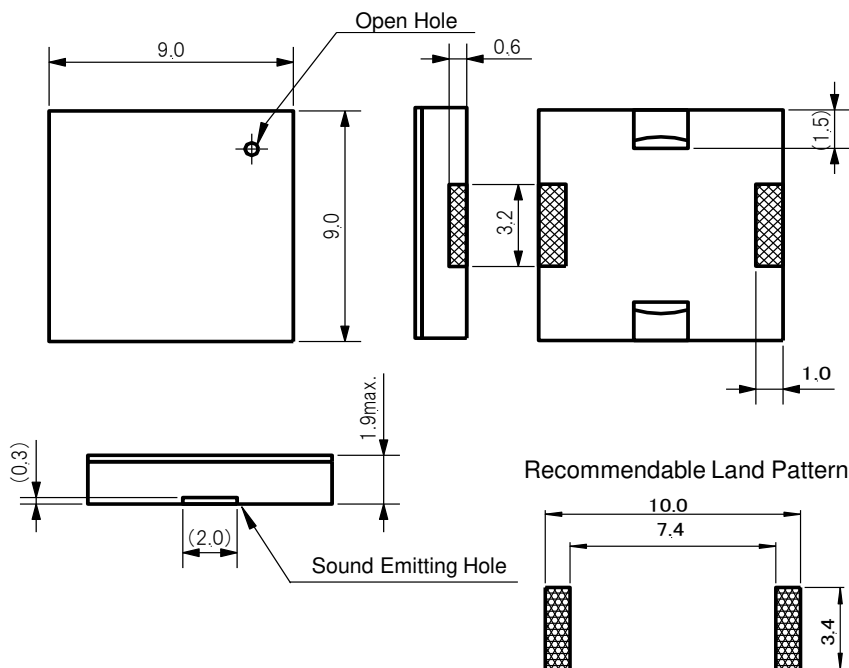
Specifications

Global Part Number	PKMCS0909E4000-R1
Sound Pressure Level	65dB min.
Measure Condition of Sound Pressure Level	± 1.5 Vo-p, 4.0kHz, square wave, 10cm
Maximum Input Voltage	± 12.5 Vo-p max.
Operating Temperature Range	-40 to +85°C
Storage Temperature Range	-40 to +85°C
Drive Type	External-Drive

Dimensions and Land pattern

(in mm)

PKMCS Series



* The location of open hole is not specified.

* Tol. : ± 0.2 mm