



Chipsmall Limited consists of a professional team with an average of over 10 year of expertise in the distribution of electronic components. Based in Hongkong, we have already established firm and mutual-benefit business relationships with customers from,Europe,America and south Asia,supplying obsolete and hard-to-find components to meet their specific needs.

With the principle of "Quality Parts,Customers Priority,Honest Operation,and Considerate Service",our business mainly focus on the distribution of electronic components. Line cards we deal with include Microchip,ALPS,ROHM,Xilinx,Pulse,ON,Everlight and Freescale. Main products comprise IC,Modules,Potentiometer,IC Socket,Relay,Connector.Our parts cover such applications as commercial,industrial, and automotives areas.

We are looking forward to setting up business relationship with you and hope to provide you with the best service and solution. Let us make a better world for our industry!



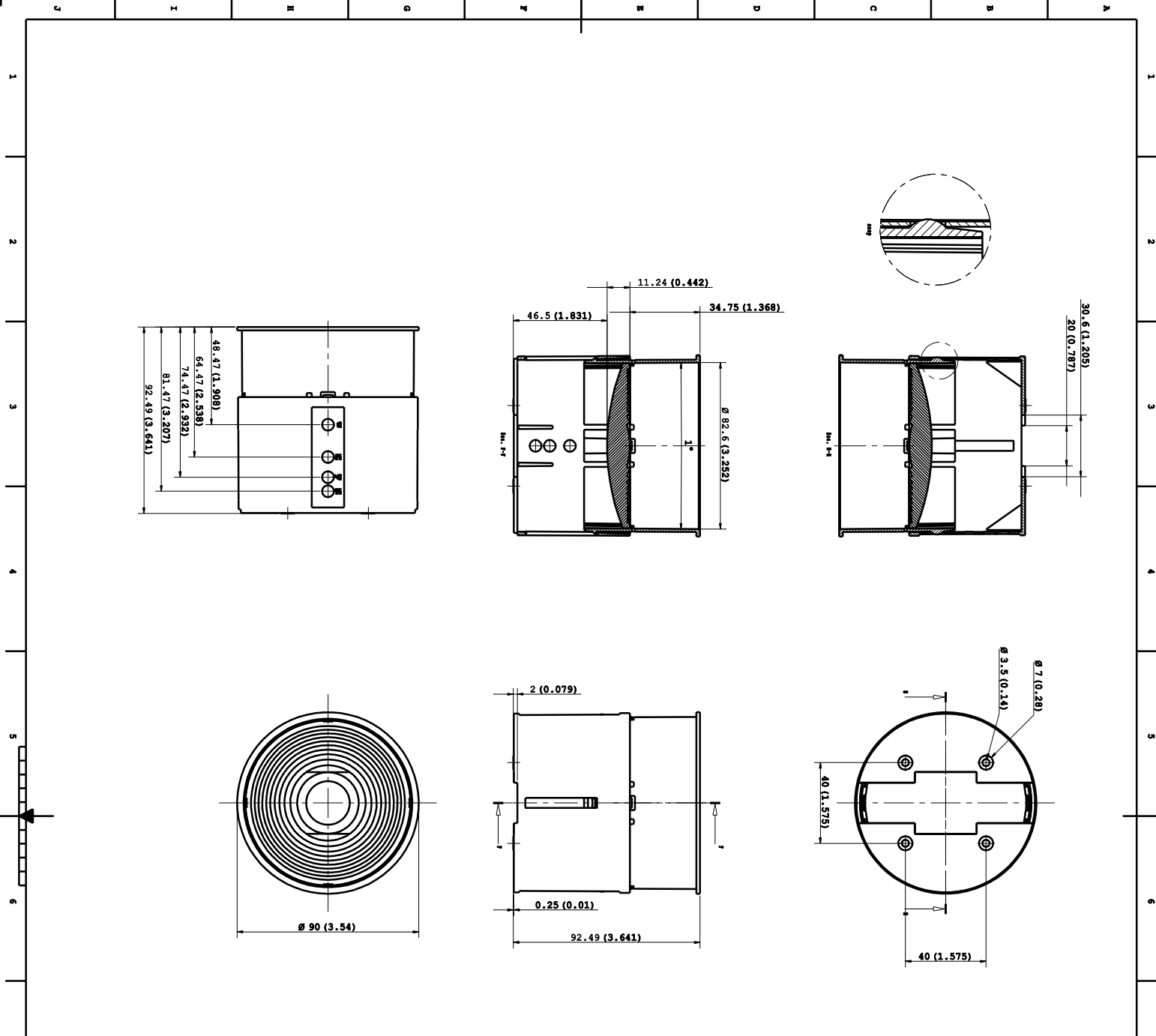
## Contact us

Tel: +86-755-8981 8866 Fax: +86-755-8427 6832

Email & Skype: info@chipsmall.com Web: www.chipsmall.com

Address: A1208, Overseas Decoration Building, #122 Zhenhua RD., Futian, Shenzhen, China





PROGETTO : FRESN\_AF\_01  
 DATA : 04/04/2011  
 COMPONENTI : IM/LS  
 VISTO : IM/LS  
 DESCRIZIONE : IM/LS

TRATTAMENTI TERMICI : VARIOSI  
 ANY

SCALA : 1 : 1  
 FOGLIO : 1 OF 5

PRODOTTORE : KHATOD  
 VIA Montefalco, 41  
 Chianello Balsano  
 01010  
 TEL. 0561 421111  
 WWW.KHATOD.COM

NOTE:  
 1. "Progetto e disegno di proprietà della KHATOD OPTOELETTRONIC s.r.l. La soluzione tecnica adottata è di proprietà della KHATOD OPTOELETTRONIC s.r.l. e non può essere riprodotta, copiata, né è vietata la riproduzione e la pubblicazione e tutti senza nessuna eccezione scritta."

DIMENSIONS IN INCHES INTO BRACKETS  
 DIMENSIONI TRA PARENTESI IN PUNTI

