



Chipsmall Limited consists of a professional team with an average of over 10 year of expertise in the distribution of electronic components. Based in Hongkong, we have already established firm and mutual-benefit business relationships with customers from,Europe,America and south Asia,supplying obsolete and hard-to-find components to meet their specific needs.

With the principle of “Quality Parts,Customers Priority,Honest Operation,and Considerate Service”,our business mainly focus on the distribution of electronic components. Line cards we deal with include Microchip,ALPS,ROHM,Xilinx,Pulse,ON,Everlight and Freescale. Main products comprise IC,Modules,Potentiometer,IC Socket,Relay,Connector.Our parts cover such applications as commercial,industrial, and automotives areas.

We are looking forward to setting up business relationship with you and hope to provide you with the best service and solution. Let us make a better world for our industry!



Contact us

Tel: +86-755-8981 8866 Fax: +86-755-8427 6832

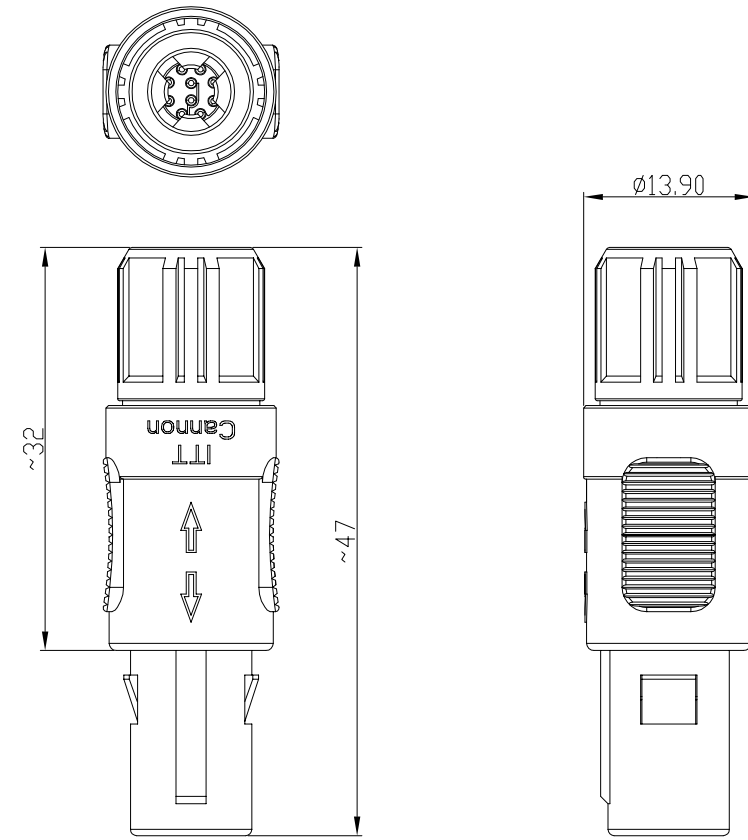
Email & Skype: info@chipsmall.com Web: www.chipsmall.com

Address: A1208, Overseas Decoration Building, #122 Zhenhua RD., Futian, Shenzhen, China



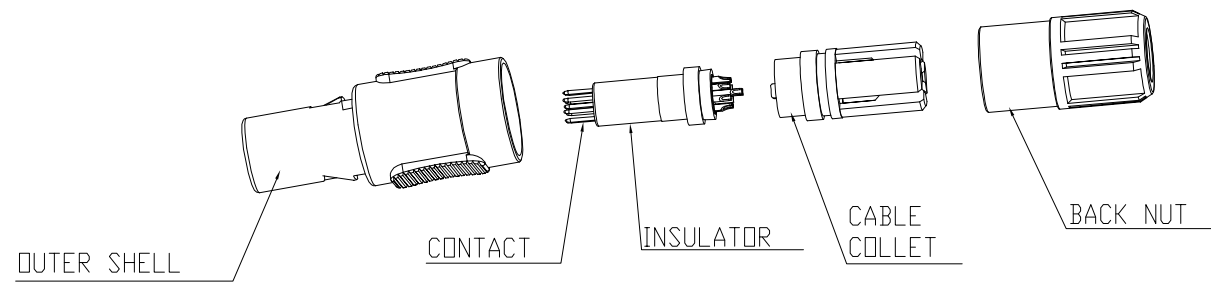
PLASTIC PUSH PULL PLUG CONFIGURATOR :

	PL	A	1	X	X	X	X	X	X	X
<p>Plastic Latch</p> <p>A1=Straight Plug with cable collet ----SOLDER CONTACT</p> <p>OUTER SHELL MATERIAL: G=GREY PSU(STANDARD) F=BLACK PEI B=BLACK PSU P=GREY PEI</p> <p>BACK NUT COLOR: 0=BLACK 1=WHITE 2=RED 4=YELLOW 5=GREEN 6=BLUE 8=GREY</p> <p>CONTACT PLATING 2= GOLD PLATING 20u''</p>	<p>NUMBER OF CONTACTS: 02=2 PIN 04=4 PIN 03=3 PIN 05=5 PIN 06=6 PIN 08=8 PIN 07=7 PIN 09=9 PIN 10=10 PIN 14=14 PIN</p> <p>CODING: 0=0°(STANDARD) A=40° C=60° E=80° H=170° J=205°</p> <p>CABLE COLLET: 1= Ø3.9mm (CABLE Ø=2.7~3.9mm) 2= Ø5.2mm (CABLE Ø=4.0~5.2mm) 3= Ø6.5mm (CABLE Ø=5.3~6.5mm)</p>									



NOTES :

1. MATERIAL
 OUTER SHELL : HIGH TEMPERATURE PLASTIC,UL94V-0
 INSERT : HIGH TEMPERATURE PLASTIC,UL94V-0
 CONTACT : COPPER ALLOY
 CABLE COLLET : HIGH TEMPERATURE PLASTIC,UL94V-0
 BACK NUT : HIGH TEMPERATURE PLASTIC,UL94V-0
2. NUMBER OF CONTACT : 2 TO 14 POSITION
3. ALL DIMENSIONS ARE IN MILLIMETERS.
4. ROHS DIRECTIVE COMPLIANCE



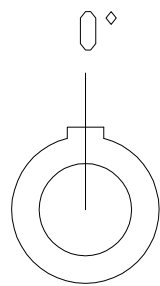
DO NOT SCALE			Total Volume =	Total Surface Area =	PDM:	A3/B	
Drawn	DANIEL	08-May-15	Material: NOTE 1	 3rd ANGLE PROJECTION	 ITT Industries Cannon Electronics (SZ) Co. Ltd.	Toupandun Industrial Area, Jinda Cheng, Xiner Village, Sha Jing Town, Baoan District, Shenzhen City PRC 518125	Pro/E Generic Model
Checked	HEROD	08-May-15					Treatment:
Engineer.	DANIEL	08-May-15	Dimensions in:	Unless Specified	Ref:		Drwg. No. CU-132039
Manufact.					Cust Spec No:	Scale 2:1	iss/rev A
Assembly						Sheet 1 of 2	
Quality							
Approvals	Sign	Date					

A	INITIAL ISSUE	08-May-15
Iss Rev	DCN/ECN or Description	Date

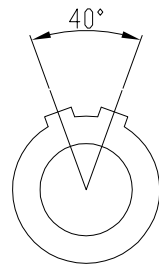
This is issued in strict confidence on condition that it is not used as a basis for manufacture or sale and that it is not copied, reprinted or disclosed to a third party either wholly or in part without the prior written consent of ITT Industries. C. 08-May-15

VIEW FROM TERMINATION SIDE MALE PART										
	2 PIN	3 PIN	4 PIN	5 PIN	6 PIN	7 PIN	8 PIN	9 PIN	10 PIN	14 PIN

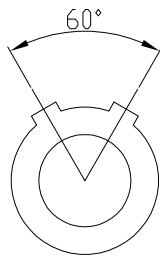
CODING (PLUG FRONT VIEW):



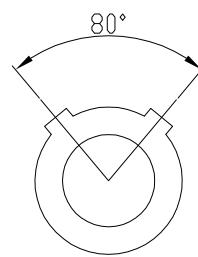
0



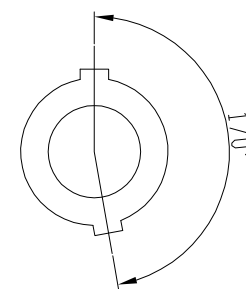
A



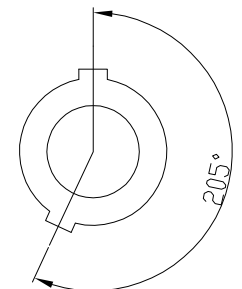
C



E



H



J

DO NOT SCALE			Total Volume =	Total Surface Area =			PDM:	A3/B
Drawn	DANIEL	08-May-15	Material:			Toupandun Industrial Area, Jinda Cheng, Xiner Village, Shajing Town, Baoan District, Shenzhen City PRC 518125	Pro/E Generic Model	
Checked	HEROD	08-May-15					Title	
Engineer	DANIEL	08-May-15	Treatment:		Cannon Electronics (SZ) Co. Ltd.	Ref:	Plastic push pull Straight Plug with cable collet	
Manufact.							Drwg. No.	
Assembly			Dimensions in:	Unless Specified	Cust Spec No:	Scale 2:1	Sheet 2 of 2	CU-132039
Quality								
Approvals	Sign	Date	This is issued in strict confidence on condition that it is not used as a basis for manufacture or sale and that it is not copied, reprinted or disclosed to a third party either wholly or in part without the prior written consent of ITT Industries. C 08-May-15				A	

A	INITIAL ISSUE	08-May-15
Iss/Rev	DCN/ECN or Description	Date