



Chipsmall Limited consists of a professional team with an average of over 10 year of expertise in the distribution of electronic components. Based in Hongkong, we have already established firm and mutual-benefit business relationships with customers from,Europe,America and south Asia,supplying obsolete and hard-to-find components to meet their specific needs.

With the principle of “Quality Parts,Customers Priority,Honest Operation,and Considerate Service”,our business mainly focus on the distribution of electronic components. Line cards we deal with include Microchip,ALPS,ROHM,Xilinx,Pulse,ON,Everlight and Freescale. Main products comprise IC,Modules,Potentiometer,IC Socket,Relay,Connector.Our parts cover such applications as commercial,industrial, and automotives areas.

We are looking forward to setting up business relationship with you and hope to provide you with the best service and solution. Let us make a better world for our industry!



Contact us

Tel: +86-755-8981 8866 Fax: +86-755-8427 6832

Email & Skype: info@chipsmall.com Web: www.chipsmall.com

Address: A1208, Overseas Decoration Building, #122 Zhenhua RD., Futian, Shenzhen, China



100Watts Single Output LED Driver



Features:

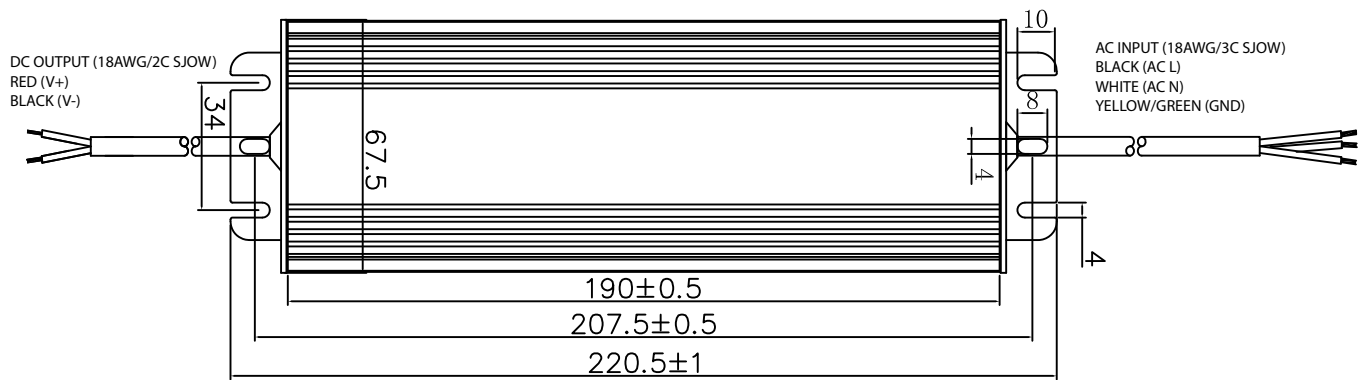
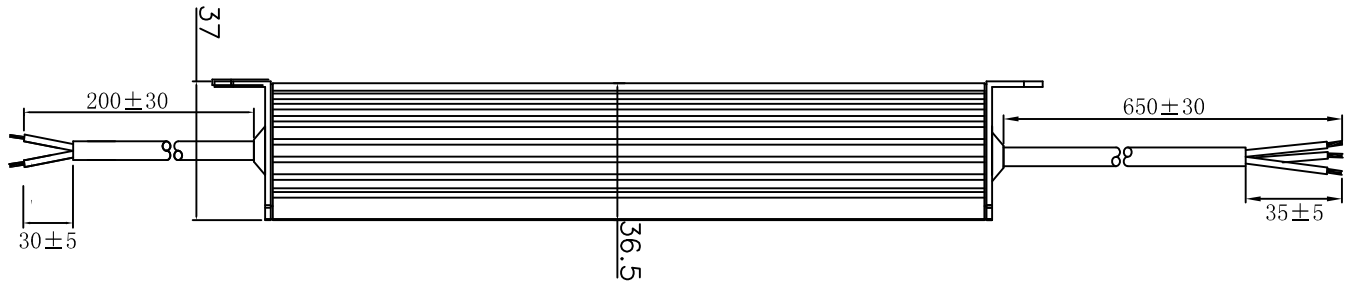
- Constant Current Design
- Universal AC input/ Full Range
- Built-in Active PFC function, PF 0.99 Typical
- High Efficiency (Up to 92%)
- Output Protections: OVP/SCP/OTP
- Lightning Protection
- Waterproof (IP67)
- 5 Year Warranty



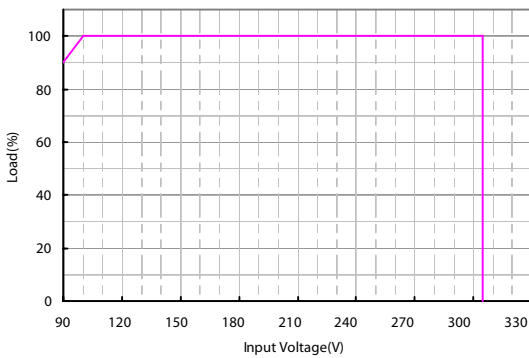
Model	PLC-100S035	PLC-100S045	PLC-100S070	PLC-100S105	PLC-100S140	PLC-100S175	PLC-100S210	PLC-100S245	PLC-100S280	PLC-100S315	PLC-100S357	PLC-100S420
Output Characteristics												
Rated Current	0.35A	0.45A	0.70A	1.05A	1.40A	1.75A	2.10A	2.45A	2.80A	3.15A	3.57A	4.20A
Voltage Range	143~286V	111~222V	71~143V	47~95V	35~71V	28~57V	24~48V	20~41V	18~36V	16~32V	14~28V	12~24V
Ripple and Noise (max) <small>Note 1</small>	±8% Vo											
Voltage Accuracy	±5% Vo											
Line Regulation	±1% Vo											
Load Regulation	±2% Vo											
Rise Time	20mS Max @ Rated Load											
Hold-up Time (Typ.)	10mS Min (110VAC input, full load), 20mS Min (220VAC input, full load)											
Input Characteristics												
Voltage Range	90VAC~305VAC											
Frequency Range	47Hz-63Hz											
Power Factor (Typical)	110VAC	>0.99	>0.99	>0.99	>0.99	>0.99	>0.99	>0.99	>0.99	>0.99	>0.99	>0.99
	220VAC	>0.95	>0.95	>0.95	>0.95	>0.95	>0.95	>0.95	>0.95	>0.95	>0.95	>0.95
Efficiency (Typical)	92%	92%	91%	91%	91%	91%	91%	91%	91%	91%	90.5%	90.5%
AC Current (max)	1.0A @ 100-277VAC Input Full Load											
Inrush Current (max)	65A @ 230VAC, 25°C											
Leakage Current	0.75mA max @ 277VAC											
Protection												
Over Temperature (OTP)	110°C (Temperature of internal components); shut down, auto recover after the temperature decreases											
Over Voltage (OVP) <small>Note 2</small>	1.30Vo	1.30Vo	1.30Vo	1.30Vo	1.30Vo	1.30Vo	1.10Vo	1.10Vo	1.30Vo	1.30Vo	1.30Vo	1.30Vo
Short Circuit (SCP)	Long-term mode, auto recovery											
Environmental Characteristics												
Operating Temperature	-35°C~70°C											
Operating Relative Humidity	10% RH to 100% RH											
Storage Temperature	-40°C~85°C, 5% to 100% RH non-condensing											
Vibration	10 to 300Hz sweep at constant acceleration of 1.0G(Breadth: 3.5mm) for 1 Hour for each of the perpendicular axes X, Y, Z											
Waterproof Rating	IP67											
Safety Standards	UL8750, Compliance to UL1012 UL935, IEC61347											
Withstand Voltage	L/N-GND: 4kV, L-N: 2kV											
Isolation Resistance	I/P-O/P: >100M Ohms / 500VDC / 25°C / 70% RH											
EMC Emission	Compliance to EN55022(CISPR22) Class B, EN61000-3-2 Class A, EN61000-3-3											
EMC Immunity	Compliance to EN61000-3-2, 3 EN61000-4-2, 3, 4, 5, 6, 8, 11, EN61547											
Characteristics												
Life Time	More than 50,000Hrs (25°C, 80% Load)											
MTBF (MIL-HDBK-217F)	More than 475,000Hrs (25°C, 80% Load)											
Dimension (LxWxH)	220.5x67.5x37mm											
Note	1. Ripple & Noise: Measured by 20 MHz bandwidth oscilloscope and the output paralleled with a 0.1 uF ceramic capacitor and a 10 uF electrolytic capacitor. 2. Latch Mode: The power supply shall return to normal operation only after the power is turned on again											

MECHANICAL SPECIFICATIONS

UNIT: mm



Derating Curve



Ambient Temperature vs. Load

