



Chipsmall Limited consists of a professional team with an average of over 10 year of expertise in the distribution of electronic components. Based in Hongkong, we have already established firm and mutual-benefit business relationships with customers from,Europe,America and south Asia,supplying obsolete and hard-to-find components to meet their specific needs.

With the principle of “Quality Parts,Customers Priority,Honest Operation,and Considerate Service”,our business mainly focus on the distribution of electronic components. Line cards we deal with include Microchip,ALPS,ROHM,Xilinx,Pulse,ON,Everlight and Freescale. Main products comprise IC,Modules,Potentiometer,IC Socket,Relay,Connector.Our parts cover such applications as commercial,industrial, and automotives areas.

We are looking forward to setting up business relationship with you and hope to provide you with the best service and solution. Let us make a better world for our industry!



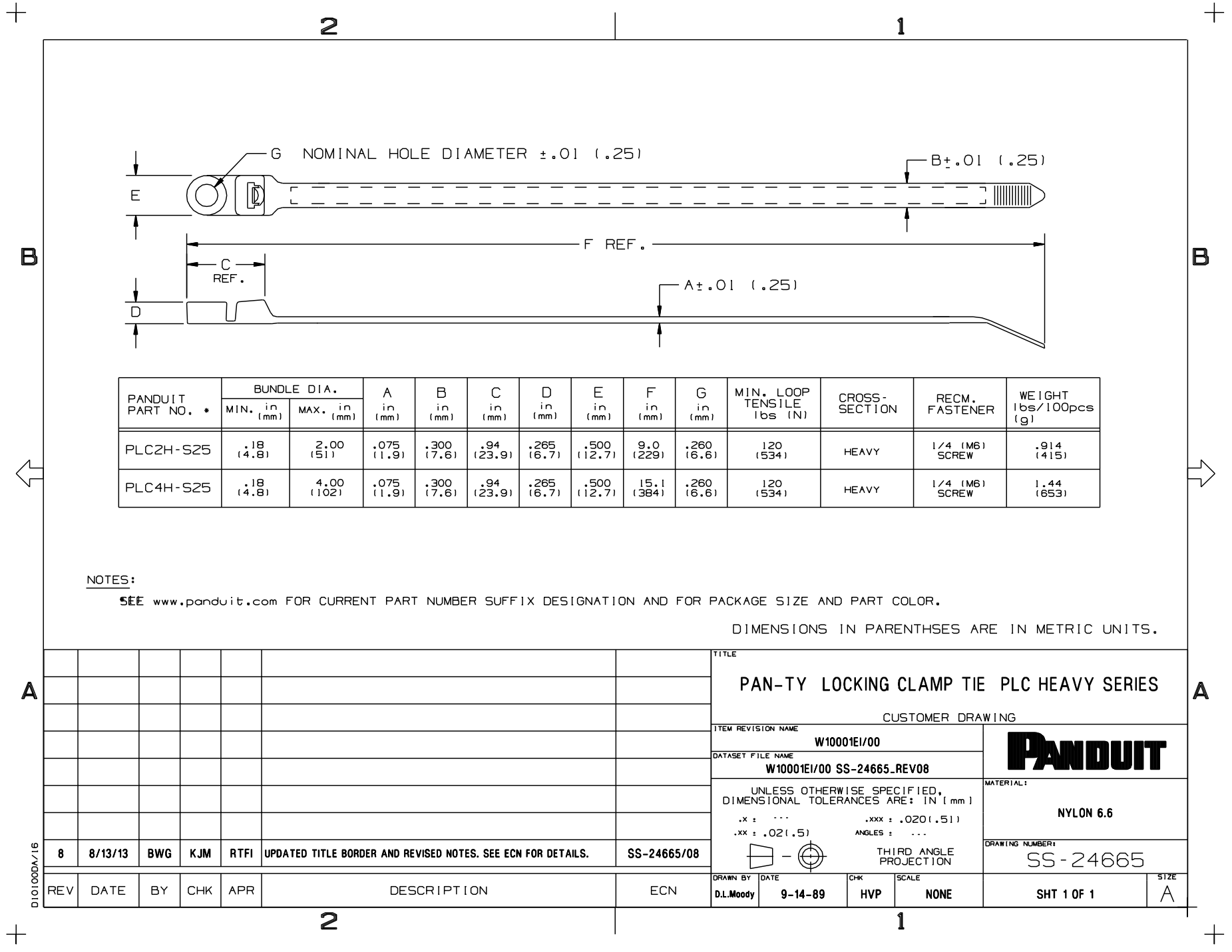
Contact us

Tel: +86-755-8981 8866 Fax: +86-755-8427 6832

Email & Skype: info@chipsmall.com Web: www.chipsmall.com

Address: A1208, Overseas Decoration Building, #122 Zhenhua RD., Futian, Shenzhen, China





PANDUIT PART NO. *	BUNDLE DIA.		A in (mm)	B in (mm)	C in (mm)	D in (mm)	E in (mm)	F in (mm)	G in (mm)	MIN. LOOP TENSILE lbs (N)	CROSS- SECTION	RECM. FASTENER	WEIGHT lbs/100pcs (g)
	MIN. in (mm)	MAX. in (mm)											
PLC2H-S25	.18 (4.8)	2.00 (51)	.075 (1.9)	.300 (7.6)	.94 (23.9)	.265 (6.7)	.500 (12.7)	9.0 (229)	.260 (6.6)	120 (534)	HEAVY	1/4 (M6) SCREW	.914 (415)
PLC4H-S25	.18 (4.8)	4.00 (102)	.075 (1.9)	.300 (7.6)	.94 (23.9)	.265 (6.7)	.500 (12.7)	15.1 (384)	.260 (6.6)	120 (534)	HEAVY	1/4 (M6) SCREW	1.44 (653)

NOTES:

SEE www.panduit.com FOR CURRENT PART NUMBER SUFFIX DESIGNATION AND FOR PACKAGE SIZE AND PART COLOR.

DIMENSIONS IN PARENTHESES ARE IN METRIC UNITS.

REV						DESCRIPTION	ECN	DRAWN BY			DATE	CHK	SCALE	SHT		SIZE
8	8/13/13	BWG	KJM	RTFI	UPDATED TITLE BORDER AND REVISED NOTES. SEE ECN FOR DETAILS.	SS-24665/08	D.L. Moody	9-14-89	HVP	NONE	SHT 1 OF 1		A			

TITLE		PAN-TY LOCKING CLAMP TIE PLC HEAVY SERIES	
CUSTOMER DRAWING			
ITEM REVISION NAME	W10001E1/00		
DATASET FILE NAME	W10001E1/00 SS-24665.REV08		
UNLESS OTHERWISE SPECIFIED, DIMENSIONAL TOLERANCES ARE: IN [mm]		MATERIAL:	
.x :xxx : .020 (.51)	NYLON 6.6	
.xx : .02 (.5)	ANGLES : ...	DRAWING NUMBER:	
THIRD ANGLE PROJECTION		SS-24665	

D101000V1/16