



Chipsmall Limited consists of a professional team with an average of over 10 year of expertise in the distribution of electronic components. Based in Hongkong, we have already established firm and mutual-benefit business relationships with customers from,Europe,America and south Asia,supplying obsolete and hard-to-find components to meet their specific needs.

With the principle of “Quality Parts,Customers Priority,Honest Operation,and Considerate Service”,our business mainly focus on the distribution of electronic components. Line cards we deal with include Microchip,ALPS,ROHM,Xilinx,Pulse,ON,Everlight and Freescale. Main products comprise IC,Modules,Potentiometer,IC Socket,Relay,Connector.Our parts cover such applications as commercial,industrial, and automotives areas.

We are looking forward to setting up business relationship with you and hope to provide you with the best service and solution. Let us make a better world for our industry!



## Contact us

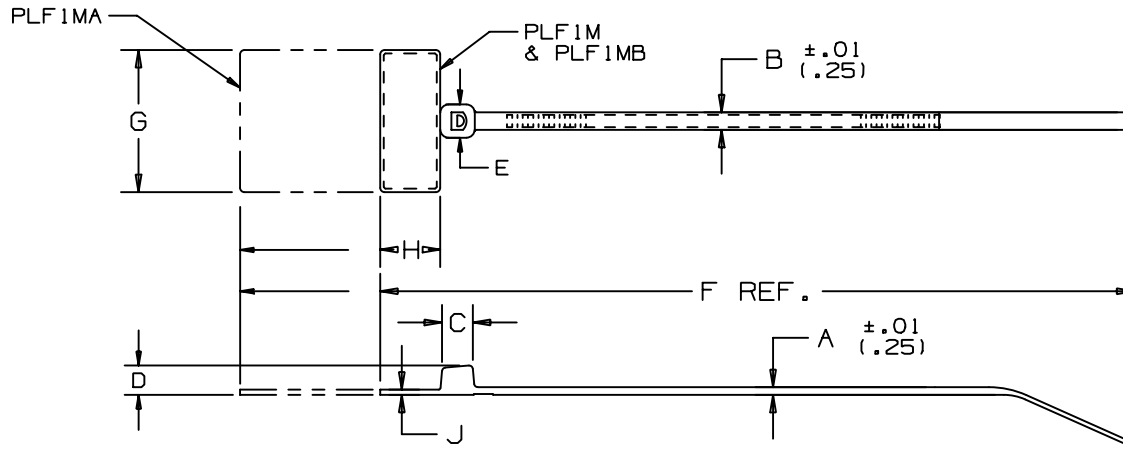
Tel: +86-755-8981 8866 Fax: +86-755-8427 6832

Email & Skype: info@chipsmall.com Web: www.chipsmall.com

Address: A1208, Overseas Decoration Building, #122 Zhenhua RD., Futian, Shenzhen, China



THIS COPY IS PROVIDED ON A RESTRICTED BASIS AND IS NOT TO BE USED IN ANY WAY DETRIMENTAL TO THE INTERESTS OF PANDUIT CORP.



PANDUIT * PART NO.	BUNDLE DIA.		A	B	C	D	E	F	G	H	J	WRITE-ON AREA	MINIMUM LOOP TENSILE	CROSS-SECTION	WEIGHT LBS/100 (G)
	MIN. IN. (mm)	MAX. IN. (mm)	IN. (mm)	IN. (mm)	IN. (mm)	IN. (mm)	IN. (mm)	IN. (mm)	IN. (mm)	IN. (mm)	IN. (mm)	IN. (mm)	lbs. (N)		
PLF 1M	.06 (1.5)	.87 (22.1)	.045 (1.1)	.098 (2.5)	.177 (4.5)	.154 (3.9)	.180 (4.6)	4.3 (109)	.812 (20.6)	.366 (9.3)	.028 (.71)	.31 X .75 (7.9 X 19.1)	18 (80)	MINIATURE	.10 (46)
PLF 1MA	.06 (1.5)	.87 (22.1)	.045 (1.1)	.098 (2.5)	.177 (4.5)	.154 (3.9)	.180 (4.6)	5.1 (130)	.812 (20.6)	1.10 (28.)	.028 (.71)	.76 X 1.04 (19.1 X 26.4)	18 (80)	MINIATURE	.16 (73)
PLF 1MB	.06 (1.5)	.75 (19)	.045 (1.1)	.098 (2.5)	.177 (4.5)	.154 (3.9)	.180 (4.6)	3.98 (101)	.980 (24.9)	.366 (9.3)	.028 (.71)	.31 X .92 (7.9 X 23.4)	18 (80)	MINIATURE	.10 (46)

NOTES:

- \* SEE CURRENT PRICE SHEET FOR PART NUMBER SUFFIX DESIGNATION FOR PACKAGE SIZE AND PART COLOR.
- RECOGNIZED UNDER THE COMPONENT PROGRAM OF UNDERWRITERS LABORATORIES INC.

										DIMENSIONS IN PARENTHESES ARE IN METRIC UNITS						
										PANDUIT CORP. TINLEY PARK, ILLINOIS						
										PAN-TY® FLAG MARKER TIE PLF SERIES						
										UNLESS OTHERWISE SPECIFIED, DIMENSIONAL TOLERANCES ARE: (.X) ± .005 (.127) (.XXX) ± .020 (.51) (.XX) ± .02 (.51) ANGLES ± .005			UNLESS OTHERWISE SPECIFIED, ALL DIMENSIONS ARE GIVEN IN INCHES, THIRD ANGLE PROJECTION.			
										DRAWN BY L.V./AJC		MAT'L: NYLON 6/6		SCALE NONE		
										DATE 2-10-71				DRAWING NO. SS-2723		
										CHK'D HVP				DWG A SIZE		
11	2/13/03	JABO		ADDED WRITE-ON AREA FOR ALL PARTS				2723	11							
REV	DATE	BY	CHK	DESCRIPTION				ECN - R	CUST	SUP						