



Chipsmall Limited consists of a professional team with an average of over 10 year of expertise in the distribution of electronic components. Based in Hongkong, we have already established firm and mutual-benefit business relationships with customers from,Europe,America and south Asia,supplying obsolete and hard-to-find components to meet their specific needs.

With the principle of "Quality Parts,Customers Priority,Honest Operation,and Considerate Service",our business mainly focus on the distribution of electronic components. Line cards we deal with include Microchip,ALPS,ROHM,Xilinx,Pulse,ON,Everlight and Freescale. Main products comprise IC,Modules,Potentiometer,IC Socket,Relay,Connector.Our parts cover such applications as commercial,industrial, and automotives areas.

We are looking forward to setting up business relationship with you and hope to provide you with the best service and solution. Let us make a better world for our industry!



## Contact us

Tel: +86-755-8981 8866 Fax: +86-755-8427 6832

Email & Skype: info@chipsmall.com Web: www.chipsmall.com

Address: A1208, Overseas Decoration Building, #122 Zhenhua RD., Futian, Shenzhen, China



Via Monfalcone 41  
20092 Cinisello Balsamo (Milano) – Italy  
Tel. +39 0266013695 – Fax +39 0266013500

**CODE NUMBER: 11000000301**

**SUBJECT: Secondary Optics for Power LEDs - PLJT1395  
Lens Coupling - Output Luminous Intensity Measurement**



- **Typ. Illuminance@1,2m ~ 48 lux**
- High lighting efficiency
- Excellent luminous flux
- No vibration problems
- Free testing
- Superior optical engineering for a perfect uniform light distribution
- Innovative design
- Easy fixing system to the LED
- Complying with UL94 Specifications
- ☀ UV Protected

**Typical Application are:**

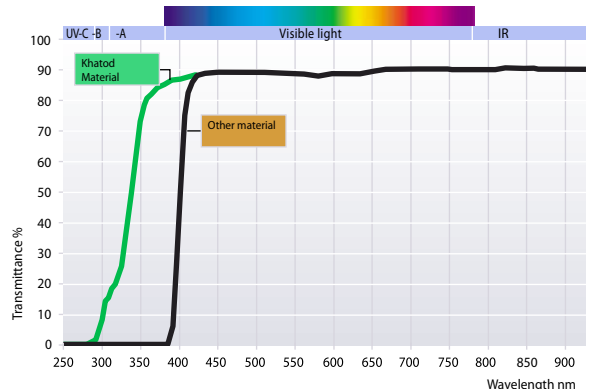
- Wall Washing
- Architectural lighting
- Lamps
- Most applications where a compact light source is required
- Any application requiring placement of LEDs in narrow or recessed spaces, as well as in diverse LED configurations

Khatod Optics are a basic element to make your optical design real. The right optical solution is fundamental for type and number of LEDs used in your design. Advanced research, scientific rigour, great attention to the continuous evolution in LED Technology, have led Khatod to develop optical solutions performing an excellent, homogeneous luminous flux, and a high lighting efficiency. The product we are proposing, is the result of Khatod’s superior engineering. It helps in reducing the costs while meeting the most demanding lighting specifications and applications.

**Contents:**

Technical Data	- Page 1
Polar Intensity Plot	- Page 2
Luminous Intensity Graphics	- Page 3
Technical Drawing	- Page 4
Photographic reproduction of the Spot	- Page 5
Luminous Distribution Intensity Data	- Annex A
General Lens Features	- Annex B
General Notes	- Annex B

**Transmittance Curve vs Wavelength**



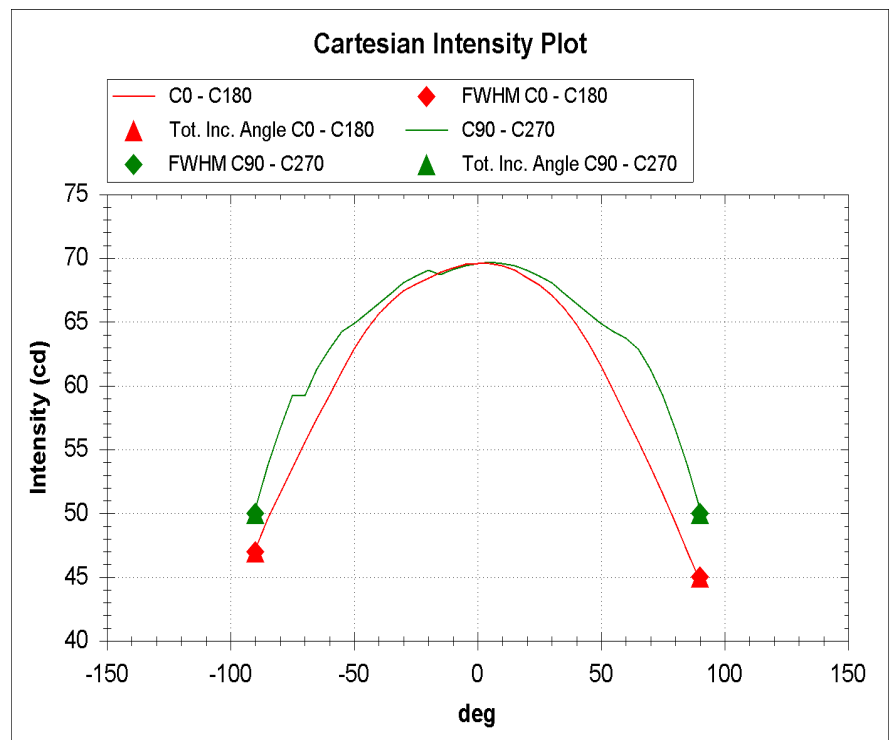
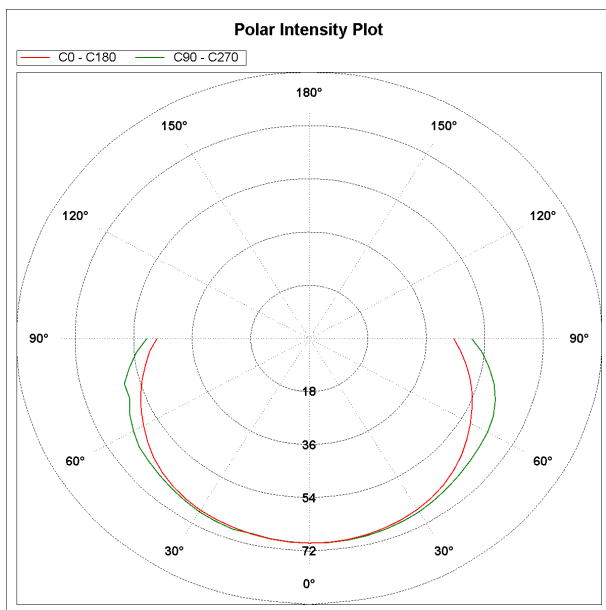
Via Monfalcone 41  
200092 Cinisello Balsamo (Milano) - Italy  
Tel. 0266013695 - Fax. +39 0266013500

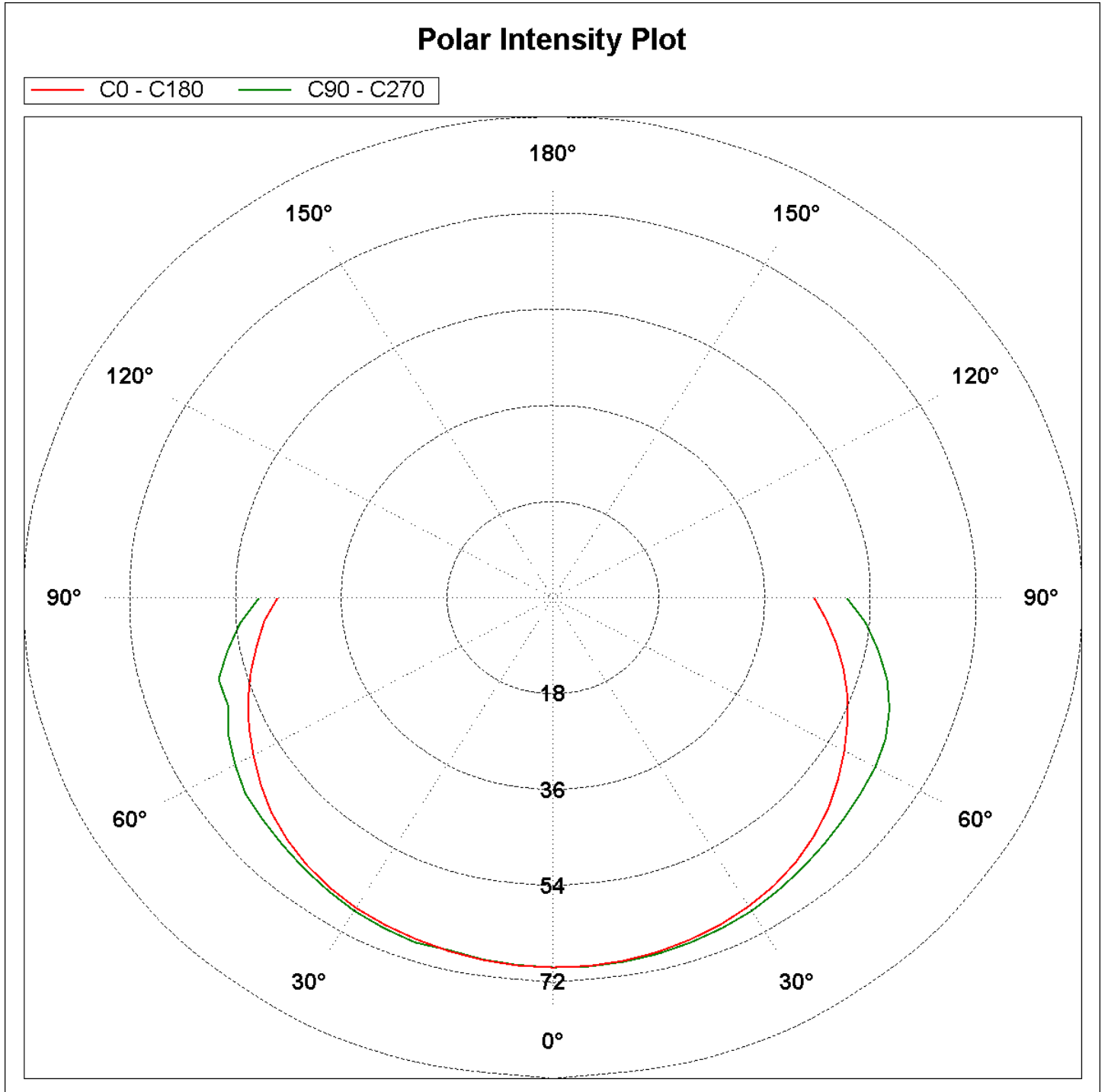
**CODE NUMBER: 11000000301**

Goniophotometer Type	KLX12M	Operator	SIMONE BASSI
Power Supply Type	ISO TECH ISP3303	Date	27/09/2011
LED Driver Type	//		

Lamp Model	//	Nominal Flux (lm)	700	Angle FWHM C Plane	180
Lens Model	PLJT1395	Total Flux (lm)	700	Angle FWHM $\gamma$ Plane	180
LED Model	XICATO XSM8040-700	Imax (cd)	69.66		
N. LED	1	Max Ill. @ Meas. Dist. (lux)	7.74	Total Incl. Angle C Plane	180
Rated Voltage (V)	32	Measurement Distance (m)	3	Total Incl. Angle $\gamma$ Plane	180
LED Drive Current (mA)	700	Room Temperature (°C)	25		

Notes:  
General Optical Measurement Tolerance: +/-10%





**CODE NUMBER: 11000000301**

Figure C0-C180

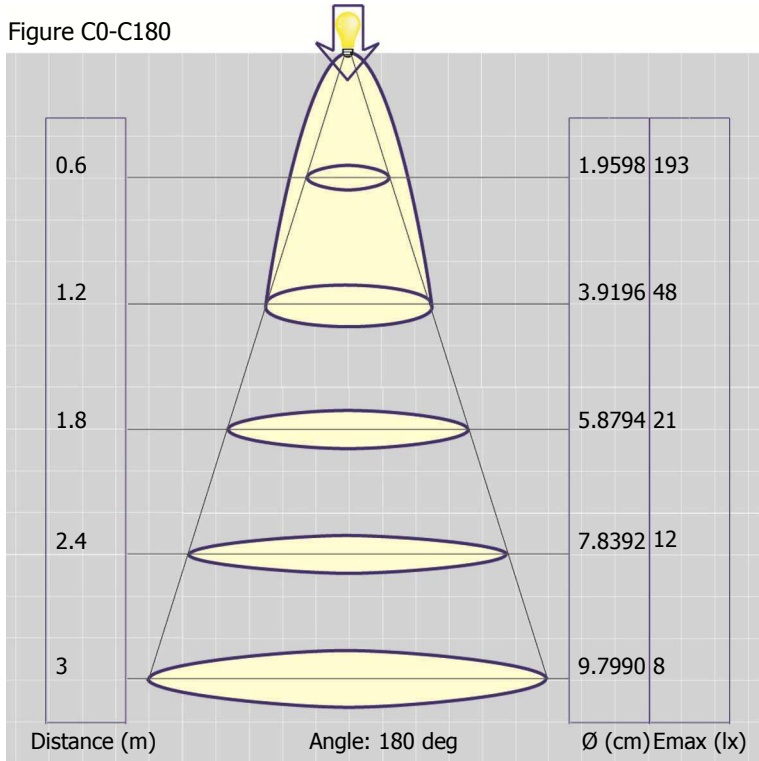
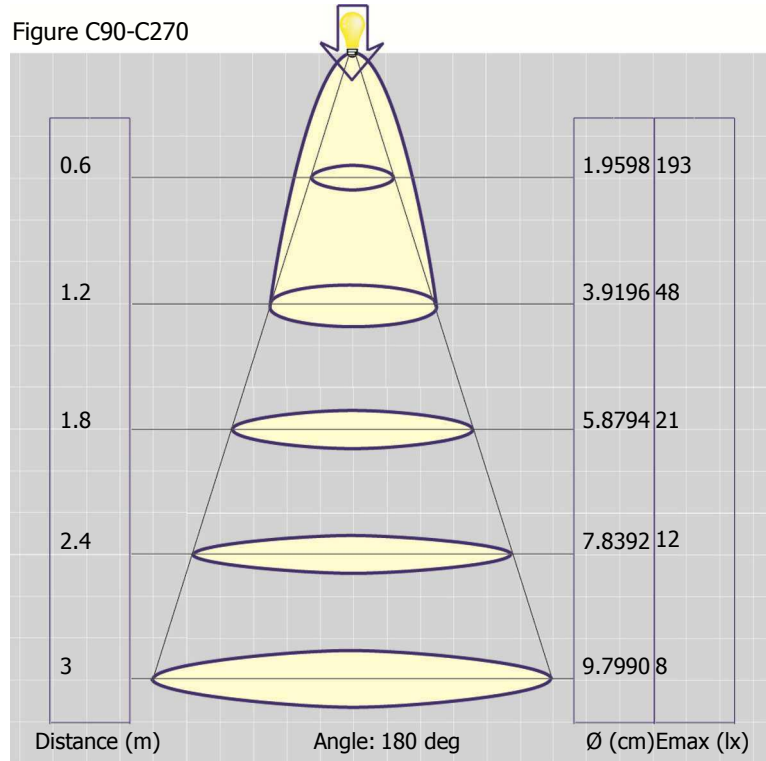
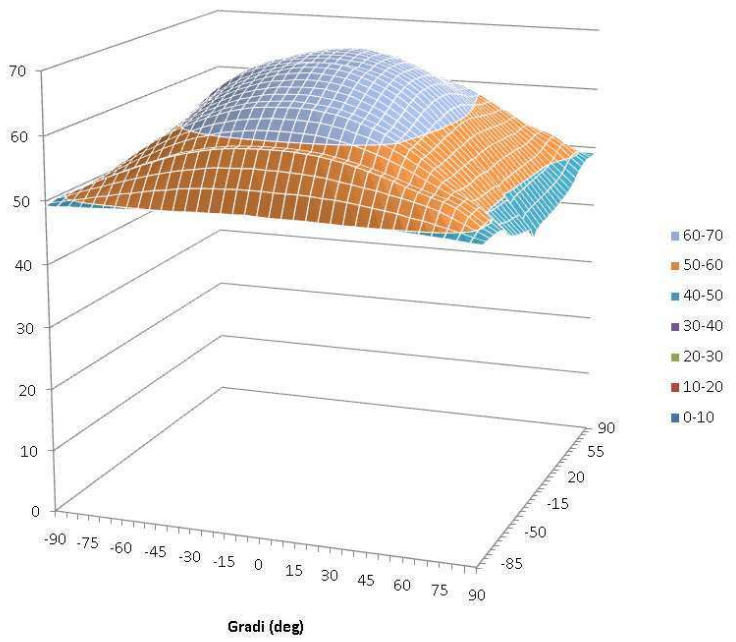


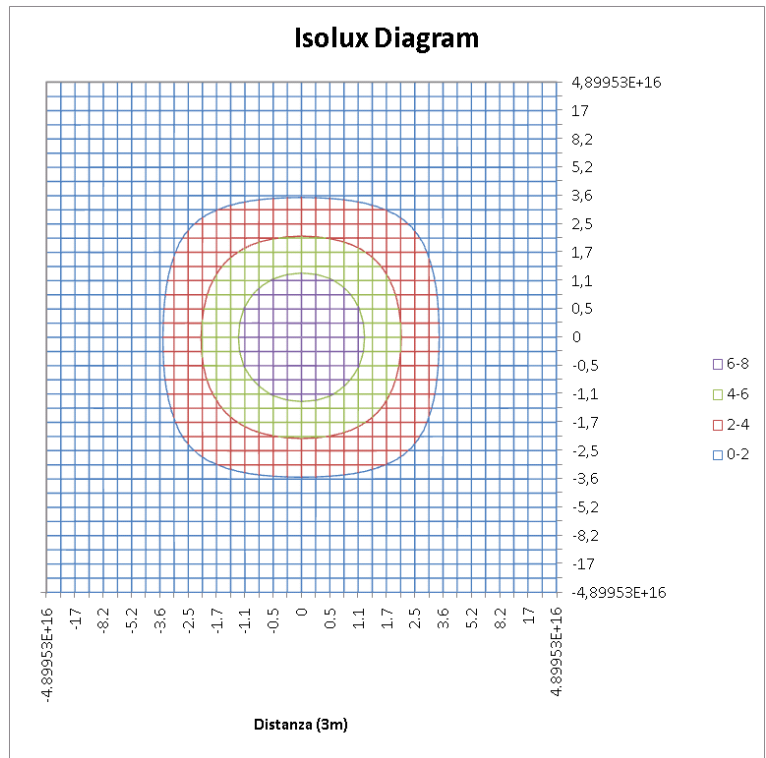
Figure C90-C270



**Isocandela Diagram**

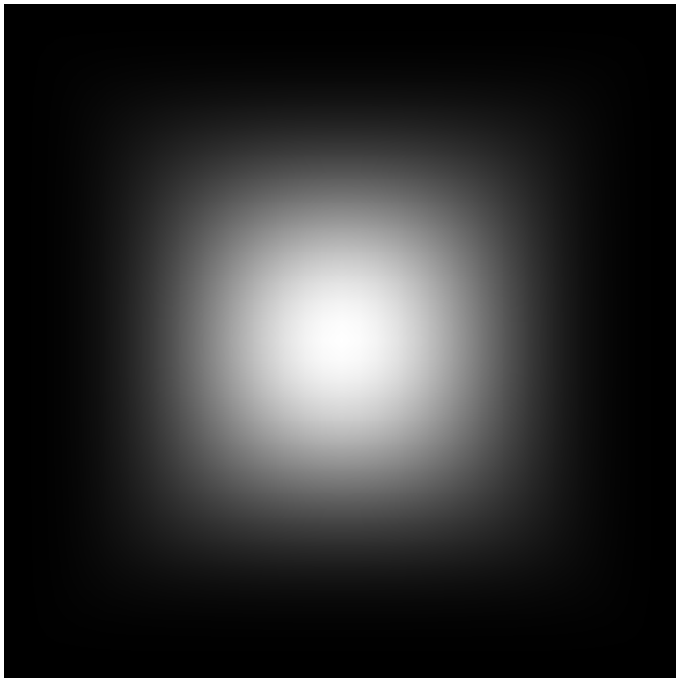


**Isolux Diagram**

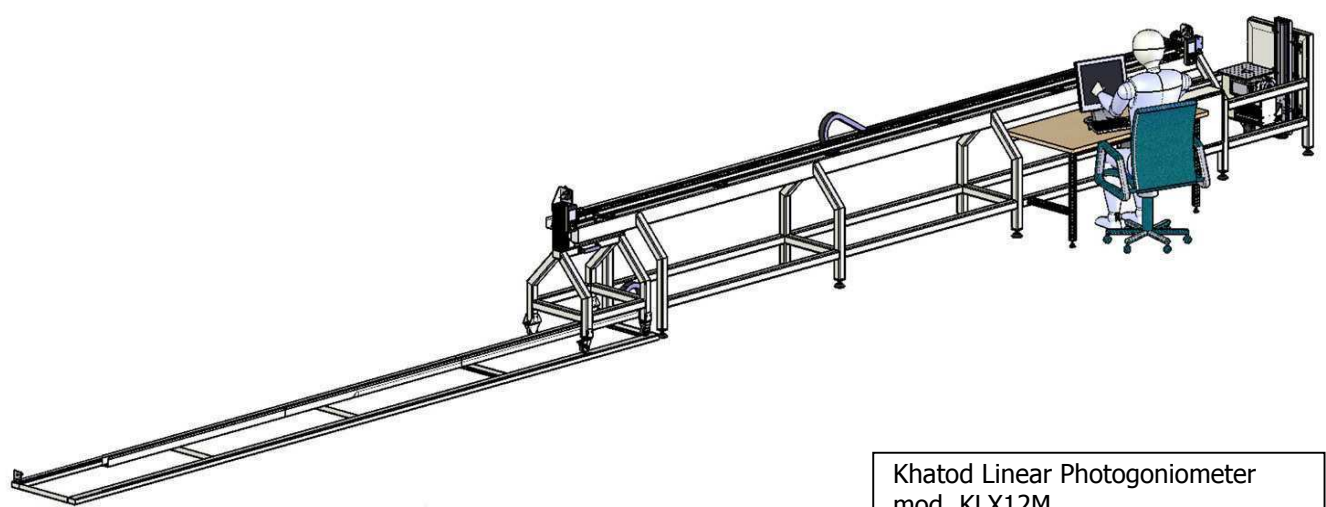
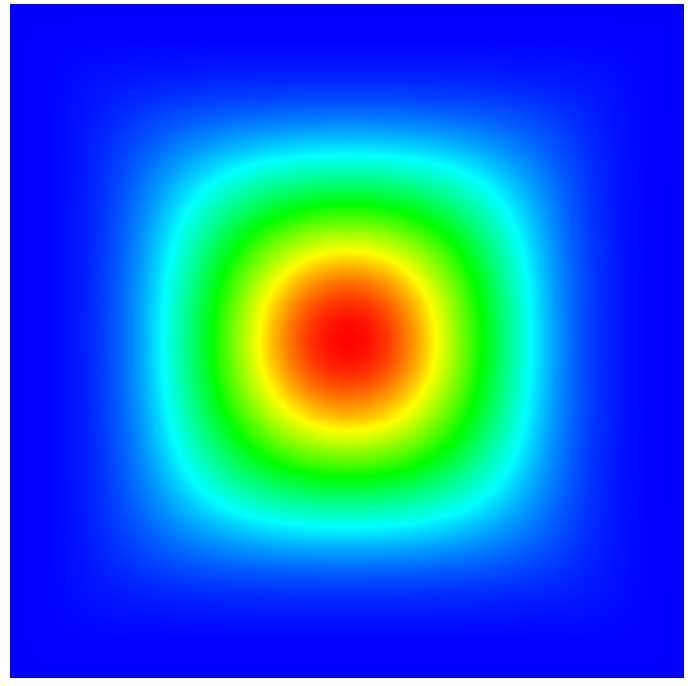




Gray Scale Illuminance @ 5m Distance



False Colours Illuminance @ 5m Distance



Khatod Linear Photogoniometer  
mod. KLX12M

## Luminous Distribution Intensity Data

CODE NUMBER: 11000000301

C (deg) γ (deg)	0°	10°	20°	30°	40°	50°	60°	70°	80°	90°	100°	110°	120°	130°	140°	150°	160°	170°	180°	190°
0°	69.6	69.6	69.6	69.6	69.6	69.6	69.6	69.6	69.6	69.6	69.6	69.6	69.6	69.6	69.6	69.6	69.6	69.6	69.6	69.6
5°	69.6	69.6	69.6	69.6	69.6	69.6	69.6	69.7	69.7	69.7	69.6	69.6	69.6	69.5	69.5	69.5	69.5	69.5	69.5	69.5
10°	69.4	69.4	69.4	69.5	69.5	69.5	69.6	69.6	69.6	69.6	69.5	69.5	69.4	69.4	69.3	69.3	69.2	69.2	69.2	69.2
15°	69	69	69.1	69.1	69.2	69.3	69.4	69.4	69.4	69.4	69.3	69.2	69.1	69.1	69	69	68.9	68.9	68.9	68.8
20°	68.5	68.5	68.6	68.6	68.8	68.9	69	69.1	69.1	69	68.9	68.8	68.8	68.7	68.6	68.6	68.5	68.4	68.4	68.4
25°	67.9	67.9	67.9	68.1	68.2	68.3	68.5	68.6	68.6	68.6	68.5	68.4	68.2	68.1	68	68	68	67.9	68	68.1
30°	67.1	67	67.2	67.3	67.5	67.7	67.9	68	68	68	67.9	67.9	67.7	67.5	67.4	67.3	67.3	67.3	67.4	67.5
35°	66.1	66.1	66.2	66.4	66.7	66.9	67.2	67.2	67.3	67.2	67.2	67.1	67	66.8	66.6	66.5	66.5	66.5	66.6	66.7
40°	64.8	64.9	65.1	65.4	65.8	66	66.4	66.4	66.5	66.4	66.4	66.3	66.3	66	65.8	65.7	65.5	65.5	65.6	65.8
45°	63.3	63.4	63.8	64.2	64.7	65	65.4	65.6	65.6	65.6	65.6	65.5	65.4	65.2	64.8	64.6	64.4	64.3	64.4	64.6
50°	61.6	61.7	62.2	62.8	63.4	64	64.4	64.7	64.8	64.9	64.8	64.7	64.5	64.1	63.8	63.3	63	62.8	62.9	63.1
55°	59.6	59.8	60.4	61.2	62.1	62.9	63.5	64	64.3	64.3	64.2	64	63.6	63.1	62.6	62	61.5	61.2	61.1	61.3
60°	57.6	57.9	58.6	59.7	60.8	61.9	62.8	63.5	63.7	63.7	63.6	63.3	62.8	62.1	61.4	60.5	59.8	59.5	59.2	59.5
65°	55.6	56	56.8	58.1	59.6	61	62.1	62.8	62.9	62.8	62.8	62.6	62	61.2	60.2	59.1	58.2	57.8	57.4	57.6
70°	53.6	54.1	55.1	56.6	58.4	60.2	61.5	61.8	61.5	61.3	61.4	61.6	61.3	60.3	59.1	57.7	56.6	56	55.5	55.7
75°	51.5	52	53.4	55.1	57.2	59.4	60.5	60.2	59.5	59.2	59.5	60.2	60.3	59.5	58	56.3	54.8	54.2	53.6	53.7
80°	49.2	50	51.5	53.5	56.1	58.4	59	58.2	57	56.5	57.1	58.3	59	58.5	56.9	54.8	53	52.2	51.5	51.7
85°	47	47.8	49.6	52	55	57.3	57.3	55.7	54.3	53.7	54.4	55.9	57.4	57.4	55.8	53.3	51.1	50.1	49.6	50.1
90°	44.7	45.6	47.8	50.6	53.9	56	55.5	53.5	51.2	50.3	51.2	53.5	55.5	56.1	54.7	51.9	49.3	48	47.2	47.5



200°	210°	220°	230°	240°	250°	260°	270°	280°	290°	300°	310°	320°	330°	340°	350°
69.6	69.6	69.6	69.6	69.6	69.6	69.6	69.6	69.6	69.6	69.6	69.6	69.6	69.6	69.6	69.6
69.4	69.4	69.4	69.4	69.4	69.4	69.4	69.4	69.4	69.4	69.4	69.4	69.5	69.5	69.5	69.5
69.2	69.2	69.1	69.1	69.1	69.1	69.1	69.1	69.1	69.2	69.2	69.2	69.2	69.3	69.3	69.3
68.8	68.8	68.8	68.8	68.8	68.7	68.7	68.7	68.7	68.7	68.8	68.8	68.9	68.9	69	69
68.5	68.5	68.4	68.4	68.6	68.7	68.9	69	69	68.9	68.7	68.4	68.5	68.6	68.5	68.5
68	68	68	68.1	68.2	68.4	68.5	68.6	68.6	68.6	68.5	68.3	68	68	68	67.9
67.5	67.5	67.4	67.5	67.7	67.9	67.9	68	68	68	67.9	67.7	67.5	67.3	67.2	67.1
66.8	66.6	66.6	66.8	67	67.1	67.2	67.2	67.3	67.2	67.2	66.9	66.7	66.4	66.3	66.1
65.9	65.7	65.8	66	66.3	66.3	66.4	66.4	66.5	66.4	66.4	66	65.8	65.4	65.1	64.9
64.8	64.6	64.8	65.2	65.4	65.5	65.6	65.6	65.6	65.6	65.4	65	64.7	64.2	63.7	63.4
63.2	63.3	63.8	64.1	64.5	64.7	64.8	64.9	64.8	64.7	64.4	64	63.4	62.8	62	61.6
61.5	62	62.6	63.1	63.6	64	64.2	64.3	64.3	64	63.5	62.9	62.1	61.2	60.3	59.7
59.8	60.5	61.4	62.1	62.8	63.1	62.9	62.8	63	63.2	62.8	61.9	60.8	59.7	58.6	57.8
58.2	59.1	60.2	61.2	61.8	61.7	61.4	61.3	61.5	61.8	61.9	61	59.6	58.1	56.8	55.9
56.6	57.7	59.1	60.3	60.5	60.2	59.5	59.2	59.5	60.2	60.7	60.2	58.4	56.6	55.1	53.8
54.8	56.3	58	59.1	59.2	58.5	59.1	59.2	59	58.4	59.2	59.1	57.2	55.1	53.4	51.7
53	54.8	56.9	57.8	57.6	58.3	57.1	56.5	57	58.2	57.3	57.8	56.1	53.5	51.5	49.3
51.1	53.3	55.8	56.5	57	55.9	54.4	53.7	54.3	55.7	56.8	56.5	55	52	49.6	46.8
49.3	51.9	54.5	55.1	55.5	53.5	51.2	50.3	51.2	53.5	55.5	55	53.9	50.6	47.8	44.3

## Lens characteristics

Parameter	Symbol	Rating	Unit
Lens Material	PC Optics	--	--
Holder Material	--	--	--
Operating Temperature	Topr	-40 to +120	°C
Storage Temperature	Tstg	-40 to +120	°C

## Notes:

Please note that flow lines and weld lines on the external surfaces of the lenses are acceptable if the optical performance of the lens is within the specification described in the section "OPTICAL CHARACTERISTICS"

- Should you require further information, please contact Khatod for advice.
- All lens testing must be subject to identical conditions as Khatod test condition.
- Published by Khatod optoelectronic srl - All the data contained in this document are the property of Khatod optoelectronic srl and may change without notice.

## **KHATOD LENS Use And Maintenance**

- DO NOT HANDLE OR INSTALL LENSES WITHOUT WEARING GLOVES, SKIN OILS MAY DAMAGE LENS OR LIGHT TRANSMISSION
- CLEAN LENSES WITH MILD SOAP AND WATER AND A SOFT CLOTH
- DO NOT USE ANY COMMERCIAL CLEANING SOLVENTS ON LENSES

Khatod SRL, Milan, Italy, manufactures lenses for LEDs. Any other use of the lens shall void our liability and warranty. The lenses are an inert component to be used in the manufacture of various products. Our warranty and liability are limited only to the manufacture of the lens. You may not modify, copy, distribute reproduce, license or alter the lens and related materials of Khatod SRL. Khatod SRL does not warrant against damages or defects arising out of the use or misuse of the products; against defects or damage arising from improper installation, or against defects in the product or in its components. No warranty of any kind, expressed or implied, is made regarding the safety of the products. The entire risk as to the quality or performance of the product is with the buyer. In no event shall Khatod SRL be liable for any direct, indirect, punitive, incidental, special, consequential damages, or any damages whatsoever arising out of or connected with the use or misuse of the product. Khatod SRL shall not have any obligation with respect to the product or any part thereof, whether based on contract, tort, strict liability or otherwise. Buyer assumes all risks and liability from use of the product. The laws of Milan, Italy govern this product warranty and liability and you hereby consent to the exclusive jurisdiction and venue of courts in Milan, Italy in all disputes arising out of or relating to the use of this product.

Production, marketing, distribution, sale of these products as well as their possible modifications and variations are only exclusive right of Khatod Optoelectronic S.r.l. No company can perform any of these actions without written permission released by Khatod Optoelectronic S.r.l. - REPRODUCTION PROHIBITED -

