



Chipsmall Limited consists of a professional team with an average of over 10 year of expertise in the distribution of electronic components. Based in Hongkong, we have already established firm and mutual-benefit business relationships with customers from,Europe,America and south Asia,supplying obsolete and hard-to-find components to meet their specific needs.

With the principle of “Quality Parts,Customers Priority,Honest Operation,and Considerate Service”,our business mainly focus on the distribution of electronic components. Line cards we deal with include Microchip,ALPS,ROHM,Xilinx,Pulse,ON,Everlight and Freescale. Main products comprise IC,Modules,Potentiometer,IC Socket,Relay,Connector.Our parts cover such applications as commercial,industrial, and automotives areas.

We are looking forward to setting up business relationship with you and hope to provide you with the best service and solution. Let us make a better world for our industry!



## Contact us

Tel: +86-755-8981 8866 Fax: +86-755-8427 6832

Email & Skype: info@chipsmall.com Web: www.chipsmall.com

Address: A1208, Overseas Decoration Building, #122 Zhenhua RD., Futian, Shenzhen, China



# Shielded, SMT Power Inductors

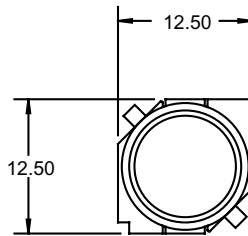
## Special Features

- High current capacity
- Magnetically shielded
- Low DCR
- Ferrite bobbin core
- Low profile, compact size
- High heat resistance, ideal for reflow soldering
- High reliability
- Test frequency 1KHz
- Operating temperature -20 to +105°C
- Saturation current to cause 10% inductance drop
- Rated current to cause 40°C temperature rise
- Tape & reel packaged 500/reel

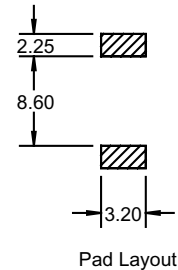
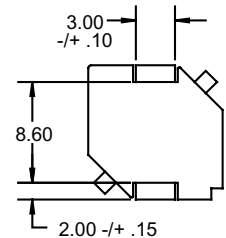
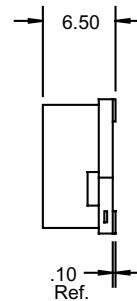
PM12565S Series				
Part Number	L (uH) ± 30%	DCR (Ω) Max.	I, sat. (A)	I, rated (A)
PM12565S-2R0	2	0.014	10.0	6.2
PM12565S-4R2	4.2	0.018	7.3	5.5
PM12565S-7R0	7	0.021	5.7	5
± 20%				
PM12565S-100M	10	0.024	5.0	4.8
PM12565S-150M	15	0.028	4.2	4.4
PM12565S-220M	22	0.038	3.5	3.8
PM12565S-330M	33	0.049	2.8	3.4
PM12565S-470M	47	0.069	2.4	2.8
PM12565S-680M	68	0.094	2.0	2.4
PM12565S-101M	100	0.148	1.6	1.9
PM12565S-221M	220	0.328	1.0	1.2

## Typical Applications

- High reliability, low magnetic coupling and densely packed board design
- Small cell phones
- PDAs
- Pagers
- Flash memory programmers
- Notebook computers
- Battery chargers
- DC-DC converters
- Network cards
- Switching boards
- Industrial electronics
- Entertainment electronic devices



Tol: +/- .35  
Dim: mm



**J.W. Miller**  
M A G N E T I C S

306 E. Alondra Blvd., Gardena, CA 90247-1059 • (310) 515-1720 • FAX (310) 515-1962

[www.jwmiller.com](http://www.jwmiller.com)