



Chipsmall Limited consists of a professional team with an average of over 10 year of expertise in the distribution of electronic components. Based in Hongkong, we have already established firm and mutual-benefit business relationships with customers from,Europe,America and south Asia,supplying obsolete and hard-to-find components to meet their specific needs.

With the principle of “Quality Parts,Customers Priority,Honest Operation,and Considerate Service”,our business mainly focus on the distribution of electronic components. Line cards we deal with include Microchip,ALPS,ROHM,Xilinx,Pulse,ON,Everlight and Freescale. Main products comprise IC,Modules,Potentiometer,IC Socket,Relay,Connector.Our parts cover such applications as commercial,industrial, and automotives areas.

We are looking forward to setting up business relationship with you and hope to provide you with the best service and solution. Let us make a better world for our industry!



Contact us

Tel: +86-755-8981 8866 Fax: +86-755-8427 6832

Email & Skype: info@chipsmall.com Web: www.chipsmall.com

Address: A1208, Overseas Decoration Building, #122 Zhenhua RD., Futian, Shenzhen, China



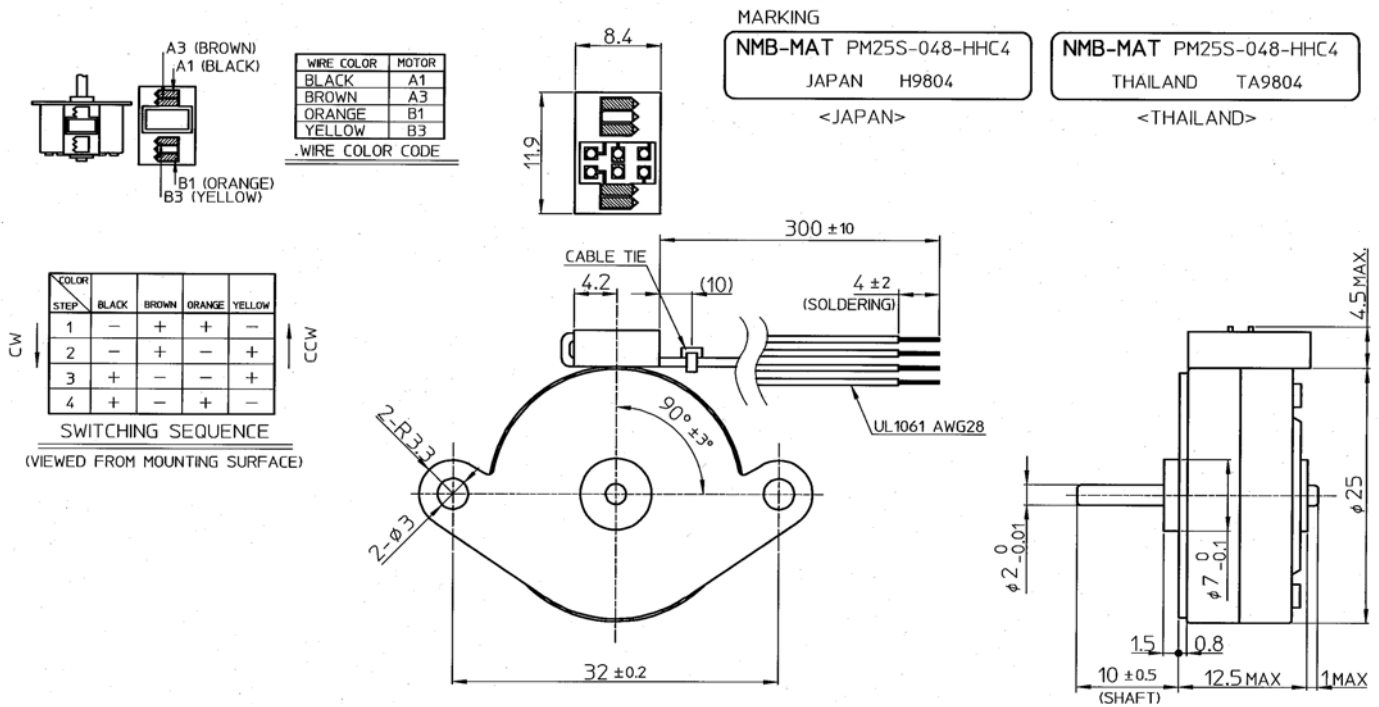
Standard PM Step Motors

PM25S-048-HHC4

Step Angle: 7.5°

Model Specifications

Model:	PM25S-048-HHC4
Shaft Length:	10mm
Wire Length:	300mm fly lead (no connector)
Wire Holder:	90 deg. Right
Front Plate:	FPH
Electrical:	24V, 600mA
	Bipolar Constant Current
	16 ohms, MS70A





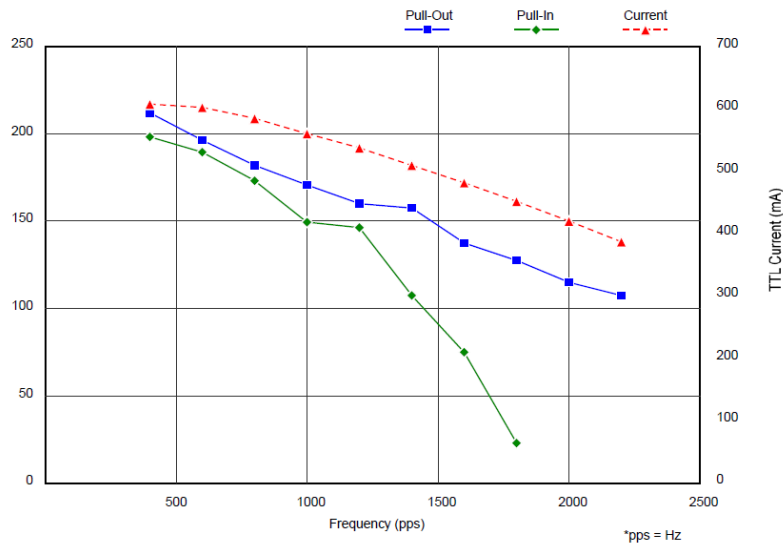
Standard PM Step Motors

PM25S-048-HHC4

DYNAMIC TORQUE CHARACTERISTICS (No. 62792)

(ALL VALUES ARE GAINED BY MEASUREMENT AND NOT SPECIFICATIONS VALUES)

Model : PM25S-048-HHC4
 Drive Mode : BIPOLAR CHOPPER
 Drive Voltage : 24.0 V
 Method : 2-2P
 Drive IC : UDN2917EB
 Surge/Current : / 600 mA / Phase (Peak)
 Coil Resistance : 16.0 Ω
 Magnet Material : MS70A
 Stator Material : SUY/SPC(Ni)



(TTL Current = Over all current drawn by the driver)

Frequency (pps)	400	600	800	1000	1200	1400	1600	1800	2000	2200
■ Pull-Out ($\times 10^{-4}$ Nm)	211.8	196.1	181.4	170.6	159.9	156.9	137.3	127.5	114.7	106.9
◆ Pull-In ($\times 10^{-4}$ Nm)	198.1	189.3	172.6	149.1	146.1	106.9	74.5	22.6		
▲ Current (mA)	607	602	584	560	537	509	480	450	419	386

Minebea Motor Manufacturing Corporation