



Chipsmall Limited consists of a professional team with an average of over 10 year of expertise in the distribution of electronic components. Based in Hongkong, we have already established firm and mutual-benefit business relationships with customers from,Europe,America and south Asia,supplying obsolete and hard-to-find components to meet their specific needs.

With the principle of "Quality Parts,Customers Priority,Honest Operation,and Considerate Service",our business mainly focus on the distribution of electronic components. Line cards we deal with include Microchip,ALPS,ROHM,Xilinx,Pulse,ON,Everlight and Freescale. Main products comprise IC,Modules,Potentiometer,IC Socket,Relay,Connector.Our parts cover such applications as commercial,industrial, and automotives areas.

We are looking forward to setting up business relationship with you and hope to provide you with the best service and solution. Let us make a better world for our industry!



Contact us

Tel: +86-755-8981 8866 Fax: +86-755-8427 6832

Email & Skype: info@chipsmall.com Web: www.chipsmall.com

Address: A1208, Overseas Decoration Building, #122 Zhenhua RD., Futian, Shenzhen, China

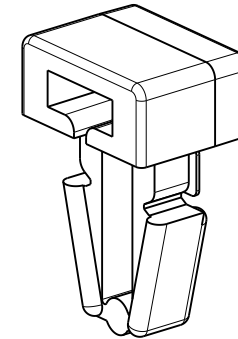
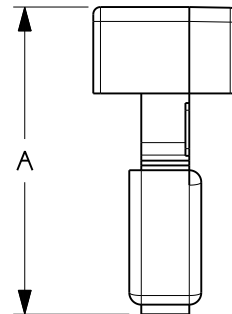
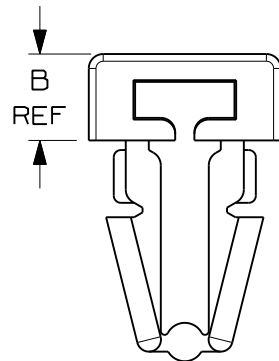
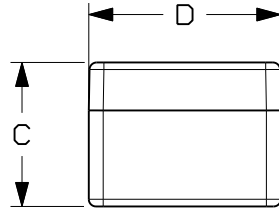



THIS COPY IS PROVIDED ON A RESTRICTED BASIS AND IS NOT TO BE USED IN ANY WAY DETRIMENTAL TO THE INTERESTS OF PANDUIT CORP.

PANDUIT PART NO.	USE WITH THESE CABLE TIE CROSS-SECTIONS	DIMENSIONS				WEIGHT g/100pcs
		A	B	C	D	
PM2H25	MINIATURE INTERMEDIATE STANDARD	.62 (15.8)	.18 (4.6) REF	.30 (7.6)	.38 (9.6)	.10 (.45)

NOTES:

- SEE CURRENT PRICE SHEET FOR PART NUMBER SUFFIX DESIGNATION FOR PACKAGE SIZE, AND COLOR.
- (*) DIMENSIONAL VARIANCE IS POSSIBLE DUE TO MOLDING PROCESS RELATED SINK MARKS.
- APPLICATION SPECIFICATION:
HOLE DIAMETER: .245 (6.3) - .255 (6.5)
PANEL THICKNESS: .125 (3.2) (MAX)



DIMENSIONS IN BRACKETS ARE METRIC [mm]	
CAD FILENAME/LAYERS G002391J_PB_PM2H25_03	
 TINLEY PARK, ILLINOIS	
PUSH MOUNT PM2H25	
UNLESS OTHERWISE SPECIFIED, DIMENSIONAL TOLERANCES ARE: (.X) ±0.05 (1.3) (.XXX) ±0.010 (0.25) (.XX) ±0.02 (0.5) ANGLES ±5°	UNLESS OTHERWISE SPECIFIED, ALL DIMENSIONS ARE GIVEN IN INCHES, THIRD ANGLE PROJECTION.
DRAWN BY LGG DATE 01-20-02 CHK'D	MAT'L: NYLON 6/6
SCALE 5:2	
DRAWING NO. GB02391J	
DWG SIZE A	

REV	DATE	BY	CHK	DESCRIPTION	ECN	R	CUST	SUP
3	5/27/08	DJSM		CORRECTED FILE NAME	GB02391J	3		
2	5/22/08	DJSM		TABULARIZED DIMENSIONS, REMOVED WINDOW DIMENSIONS	GB02391J	2		
1	02/05/03	MSAD		.070 +/- .015 WAS .070 +/- .010 (1.8 +/- 0.38) (1.8 +/- 0.25)	GB02391J	1		
R	01/10/02	LGG		INITIAL RELEASE	GB02391J	R		