



Chipsmall Limited consists of a professional team with an average of over 10 year of expertise in the distribution of electronic components. Based in Hongkong, we have already established firm and mutual-benefit business relationships with customers from,Europe,America and south Asia,supplying obsolete and hard-to-find components to meet their specific needs.

With the principle of “Quality Parts,Customers Priority,Honest Operation,and Considerate Service”,our business mainly focus on the distribution of electronic components. Line cards we deal with include Microchip,ALPS,ROHM,Xilinx,Pulse,ON,Everlight and Freescale. Main products comprise IC,Modules,Potentiometer,IC Socket,Relay,Connector.Our parts cover such applications as commercial,industrial, and automotives areas.

We are looking forward to setting up business relationship with you and hope to provide you with the best service and solution. Let us make a better world for our industry!



Contact us

Tel: +86-755-8981 8866 Fax: +86-755-8427 6832

Email & Skype: info@chipsmall.com Web: www.chipsmall.com

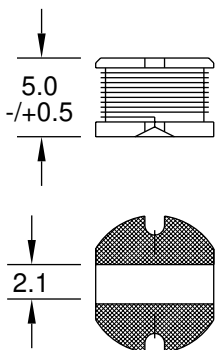
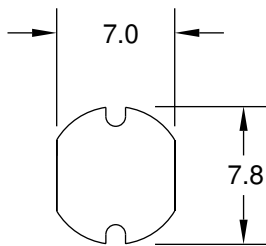
Address: A1208, Overseas Decoration Building, #122 Zhenhua RD., Futian, Shenzhen, China



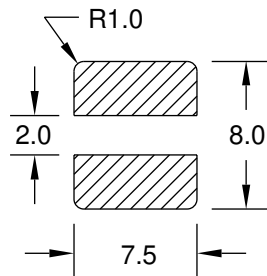
SMT Power Inductors

Special Features

- High current capacity
- Ferrite bobbin core
- Low core loss for high frequency power application
- Compact size
- Large terminal surface for good PCB bonding
- Operating temperature -30 to +100°C
- Current to cause maximum 10% of inductance drop, or 40°C temperature rise
- Tape & reel packaged 500/reel



Tol: +/-0.3
Dim: mm



Pad Layout

PM75 Series					
Part Number	L (uH) ±10%	Test Freq.	SRF (MHz) Typ.	DCR (Ω) Max.	I, DC (A)
PM75-100K	10	2.52 MHz	28	0.07	2.30
PM75-120K	12	2.52 MHz	23	0.08	2.00
PM75-150K	15	2.52 MHz	22	0.09	1.80
PM75-180K	18	2.52 MHz	20	0.10	1.60
PM75-220K	22	2.52 MHz	17	0.11	1.50
PM75-270K	27	2.52 MHz	15	0.12	1.30
PM75-330K	33	2.52 MHz	15	0.13	1.20
PM75-390K	39	2.52 MHz	14	0.16	1.10
PM75-470K	47	2.52 MHz	13	0.18	1.10
PM75-560K	56	2.52 MHz	11	0.24	0.94
PM75-680K	68	2.52 MHz	11	0.28	0.85
PM75-820K	82	2.52 MHz	10	0.37	0.78
PM75-101K	100	1 KHz	9	0.43	0.72
PM75-121K	120	1 KHz	7	0.47	0.66
PM75-151K	150	1 KHz	6	0.64	0.58
PM75-181K	180	1 KHz	5	0.71	0.51
PM75-221K	220	1 KHz	5	0.96	0.49
PM75-271K	270	1 KHz	4	1.11	0.42
PM75-331K	330	1 KHz	4	1.26	0.40
PM75-391K	390	1 KHz	4	1.77	0.36
PM75-471K	470	1 KHz	3	1.96	0.34