



Chipsmall Limited consists of a professional team with an average of over 10 year of expertise in the distribution of electronic components. Based in Hongkong, we have already established firm and mutual-benefit business relationships with customers from,Europe,America and south Asia,supplying obsolete and hard-to-find components to meet their specific needs.

With the principle of “Quality Parts,Customers Priority,Honest Operation,and Considerate Service”,our business mainly focus on the distribution of electronic components. Line cards we deal with include Microchip,ALPS,ROHM,Xilinx,Pulse,ON,Everlight and Freescale. Main products comprise IC,Modules,Potentiometer,IC Socket,Relay,Connector.Our parts cover such applications as commercial,industrial, and automotives areas.

We are looking forward to setting up business relationship with you and hope to provide you with the best service and solution. Let us make a better world for our industry!



## Contact us

Tel: +86-755-8981 8866 Fax: +86-755-8427 6832

Email & Skype: info@chipsmall.com Web: www.chipsmall.com

Address: A1208, Overseas Decoration Building, #122 Zhenhua RD., Futian, Shenzhen, China

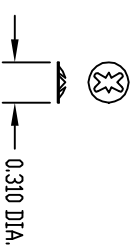
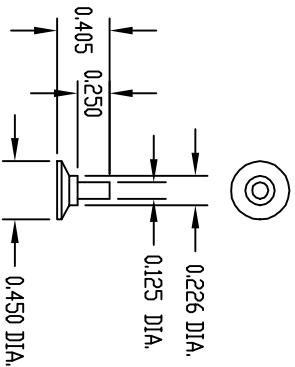


PART NAME MOUNTING BOSS KIT

PART No.

PMB-11282

MATERIAL: HIGH-IMPACT PLASTIC  
FINISH: PC BONE GRAY  
 FOUR (4) BOSSES & FOUR (4) CLIPS  
 SUPPLIED WITH EACH KIT.



#C10262-010 REF.

PART NAME ADAPTER BRACKET

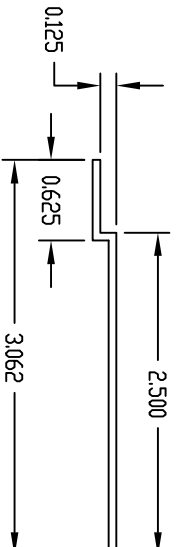
PART No.

AB-1851 TD AB-1856

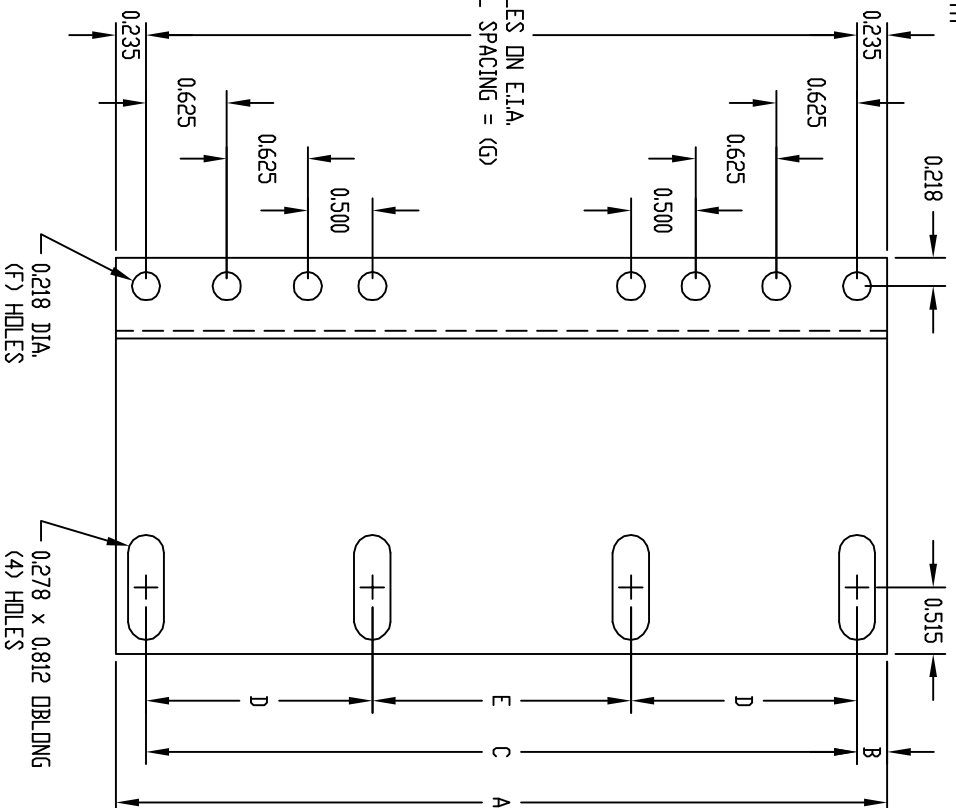
MATERIAL: 16 GA. STEEL

FINISH: SMOOTH BLACK

BRACKETS ARE PACKAGED IN PAIRS.  
 BRACKETS ARE USED FOR MOUNTING  
 19" WIDE EQUIPMENT INTO OPEN  
 RELAY RACKS WITH 23" AND 24"  
 WIDE PANEL SPACES AND  
 ENCLOSED CABINET RACKS WITH  
 24" WIDE PANEL SPACES.



(F) HOLES ON E.I.A.  
 UNIVERSAL SPACING = (G)



PART NO.	PANEL SPACE A	B	C	D	E	F QTY.	G
AB-1851	1.750	0.235	1.250			(3)	1.250
AB-1852	3.500	0.235	3.000			(6)	3.000
AB-1853	5.250	1.485	2.250			(9)	4.750
AB-1854	7.000	1.485	4.000			(12)	6.500
AB-1855	8.750	1.485	5.750			(15)	8.250
AB-1856	10.500	1.485	7.500	2.250	3.000	(18)	10.000