



Chipsmall Limited consists of a professional team with an average of over 10 year of expertise in the distribution of electronic components. Based in Hongkong, we have already established firm and mutual-benefit business relationships with customers from,Europe,America and south Asia,supplying obsolete and hard-to-find components to meet their specific needs.

With the principle of "Quality Parts,Customers Priority,Honest Operation,and Considerate Service",our business mainly focus on the distribution of electronic components. Line cards we deal with include Microchip,ALPS,ROHM,Xilinx,Pulse,ON,Everlight and Freescale. Main products comprise IC,Modules,Potentiometer,IC Socket,Relay,Connector.Our parts cover such applications as commercial,industrial, and automotives areas.

We are looking forward to setting up business relationship with you and hope to provide you with the best service and solution. Let us make a better world for our industry!



## Contact us

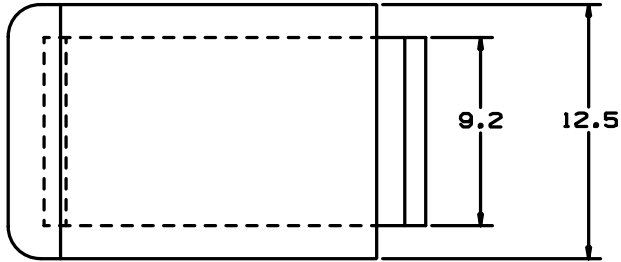
Tel: +86-755-8981 8866 Fax: +86-755-8427 6832

Email & Skype: info@chipsmall.com Web: www.chipsmall.com

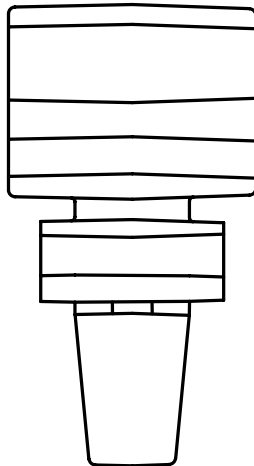
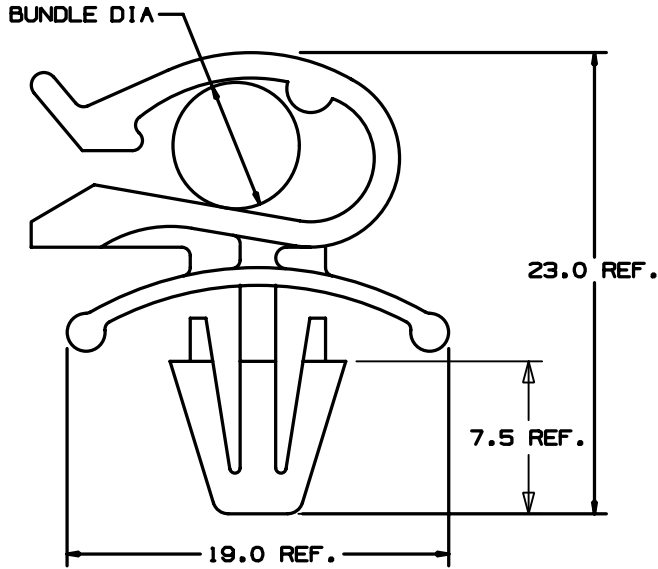
Address: A1208, Overseas Decoration Building, #122 Zhenhua RD., Futian, Shenzhen, China



THIS COPY IS PROVIDED ON A RESTRICTED BASIS AND IS NOT TO BE USED IN ANY WAY DETRIMENTAL TO THE INTERESTS OF PANDUIT CORP.



PANDUIT PART NUMBER	RECOMMENDED BUNDLE DIA RANGE (mm)	PANEL DIMENSIONS		WEIGHT g/100 pcs.
		THICKNESS (mm)	HOLE SIZE (mm)	
PMCC09H06	6.0 - 9.0	1.0 - 3.0	6.3 - 6.5	125



NOTES:

- SEE CURRENT PRICE SHEET FOR PART NUMBER SUFFIX DESIGNATION FOR PACKAGE SIZE.

DIMENSIONS ARE METRIC (mm)	
CND FILENAME/LAYERS G00239LD_PB_PMCC09H06_02	
<b>PANDUIT</b> CORP. TINLEY PARK, ILLINOIS	
PMCC09H06 PUSH MOUNT CORD CLIP	
UNLESS OTHERWISE SPECIFIED, DIMENSIONAL TOLERANCES ARE: (.X) ±0.5 ANGLES ± 5°	UNLESS OTHERWISE SPECIFIED, ALL DIMENSIONS ARE GIVEN IN INCHES, THIRD ANGLE PROJECTION.
DRAWN BY JAD	MAT'L: HEAT STABILIZED NYLON 6/6 COLOR: BLACK
DATE 5/21/04	SCALE NONE
CHK'D	DRAWING NO. G00239LD
	DWG SIZE A

REV	DATE	BY	CHK	DESCRIPTION	ECN	R	CUST	SUP	Q.C.
2	4-14-05	TMSA		ADDED BARB HEIGHT DIMENSION 7.5 REF	G80239LD	2			
1	12/27/04	MJK		CONVERT TO METRIC DWG AND DIM REVISIONS	G80239LD	1			
R	5/21/04	JAD		INITIAL RELEASE	G80239LD	R			