



Chipsmall Limited consists of a professional team with an average of over 10 year of expertise in the distribution of electronic components. Based in Hongkong, we have already established firm and mutual-benefit business relationships with customers from,Europe,America and south Asia,supplying obsolete and hard-to-find components to meet their specific needs.

With the principle of “Quality Parts,Customers Priority,Honest Operation,and Considerate Service”,our business mainly focus on the distribution of electronic components. Line cards we deal with include Microchip,ALPS,ROHM,Xilinx,Pulse,ON,Everlight and Freescale. Main products comprise IC,Modules,Potentiometer,IC Socket,Relay,Connector.Our parts cover such applications as commercial,industrial, and automotives areas.

We are looking forward to setting up business relationship with you and hope to provide you with the best service and solution. Let us make a better world for our industry!



## Contact us

Tel: +86-755-8981 8866 Fax: +86-755-8427 6832

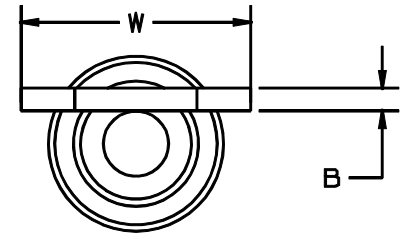
Email & Skype: info@chipsmall.com Web: www.chipsmall.com

Address: A1208, Overseas Decoration Building, #122 Zhenhua RD., Futian, Shenzhen, China



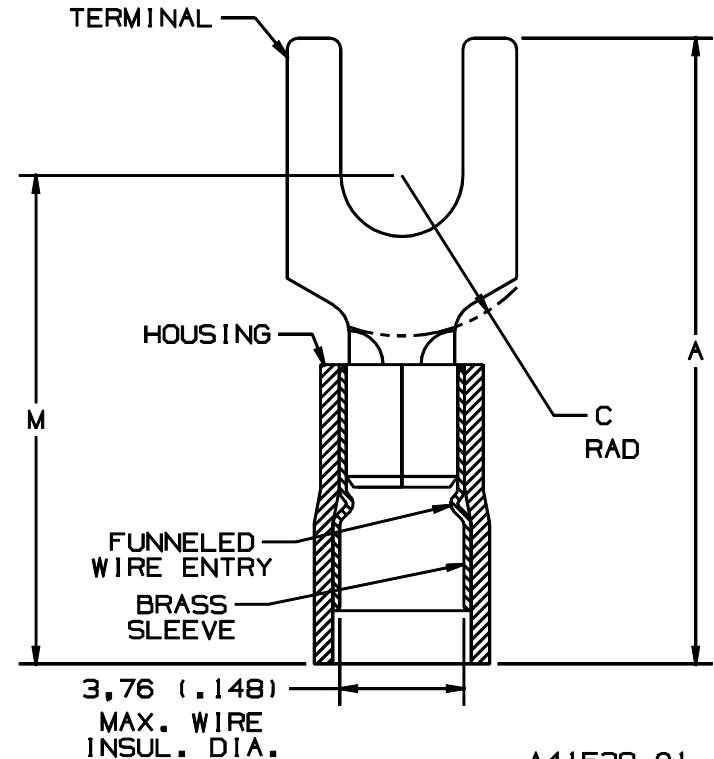
THIS COPY IS PROVIDED ON A RESTRICTED BASIS AND IS NOT TO BE USED IN ANY WAY DETRIMENTAL TO THE INTERESTS OF PANDUIT CORP.

| PART NUMBER |          | STUD SIZE | WIRE RANGE<br>mm <sup>2</sup> | DIMENSIONS mm   |                |               |              |                |
|-------------|----------|-----------|-------------------------------|-----------------|----------------|---------------|--------------|----------------|
| PREFIX      | PK       |           |                               | A ±.50          | W ±.25         | C ±.38        | B ±.25       | M ±.50         |
| PMNF1-3F    | -C<br>-M | M3        | 0,5-1,5<br>(.22-.18)          | 21,08<br>(.83)  | 5,84<br>(.23)  | 5,08<br>(.20) | ,81<br>(.03) | 17,53<br>(.69) |
| PMNF1-4F    | -C<br>-M | M4        | 0,5-1,5<br>(.22-.18)          | 22,61<br>(.89)  | 8,13<br>(.32)  | 5,84<br>(.23) | ,81<br>(.03) | 18,29<br>(.72) |
| PMNF1-5F    | -C<br>-M | M5        | 0,5-1,5<br>(.22-.18)          | 22,86<br>(.90)  | 8,89<br>(.35)  | 6,35<br>(.25) | ,81<br>(.03) | 18,80<br>(.74) |
| PMNF1-6F    | -C<br>-M | M6        | 0,5-1,5<br>(.22-.18)          | 27,43<br>(1.08) | 11,18<br>(.44) | 8,38<br>(.33) | ,81<br>(.03) | 21,08<br>(.83) |



NOTES:

- USED FOR:
  - A. 600V MAX. VOLTAGE RATING
  - B. 105°C (221°F) MAX. TEMP. RATING
  - C. STRANDED COPPER WIRE
- PACKAGE QTY:
  - A. STD: C=100
  - B. BULK: M=1000
- MATERIAL:
  - A. STAMPING: COPPER, TIN PLATED
  - B. HOUSING: NYLON, RED
- WIRE STRIP LENGTH:  $5,6^{+.8}_{-0}$  ( $7/32^{+1/32}_{-0}$ )
- INSTALLATION TOOLS: REF DWGS. A41522, A41523, A41524, A41525
- DIMENSIONS IN BRACKETS ARE IN INCHES OR AWG



A41538\_01

|     |       |    |     |                                  |       |      |                      |          |  |       |             |
|-----|-------|----|-----|----------------------------------|-------|------|----------------------|----------|--|-------|-------------|
|     |       |    |     |                                  |       |      | <b>PANDUIT</b> CORP. |          | TINLEY PARK, ILLINOIS  |       |             |
| 01  | 10/97 | TM |     | CHANGED DECIMAL POINTS TO COMMAS |       |      |                      |          | 0,5-1,5 mm <sup>2</sup> METRIC NYLON INSULATED, FUNNELED ENTRY FORK TERMINAL |       |             |
| 00  | 2/92  | DL | SJ  | RELEASED                         |       |      | 00816                | LA       | KS   |       |             |
| REV | DATE  | BY | CHK | DESCRIPTION                      | ECN # | CUST | PM                   | DRAWN BY | CHK'D  | SCALE | DRAWING NO. |
|     |       |    |     |                                  |       |      |                      | DRL      |  | NONE  | A41538      |