



Chipsmall Limited consists of a professional team with an average of over 10 year of expertise in the distribution of electronic components. Based in Hongkong, we have already established firm and mutual-benefit business relationships with customers from,Europe,America and south Asia,supplying obsolete and hard-to-find components to meet their specific needs.

With the principle of "Quality Parts,Customers Priority,Honest Operation,and Considerate Service",our business mainly focus on the distribution of electronic components. Line cards we deal with include Microchip,ALPS,ROHM,Xilinx,Pulse,ON,Everlight and Freescale. Main products comprise IC,Modules,Potentiometer,IC Socket,Relay,Connector.Our parts cover such applications as commercial,industrial, and automotives areas.

We are looking forward to setting up business relationship with you and hope to provide you with the best service and solution. Let us make a better world for our industry!



Contact us

Tel: +86-755-8981 8866 Fax: +86-755-8427 6832

Email & Skype: info@chipsmall.com Web: www.chipsmall.com

Address: A1208, Overseas Decoration Building, #122 Zhenhua RD., Futian, Shenzhen, China

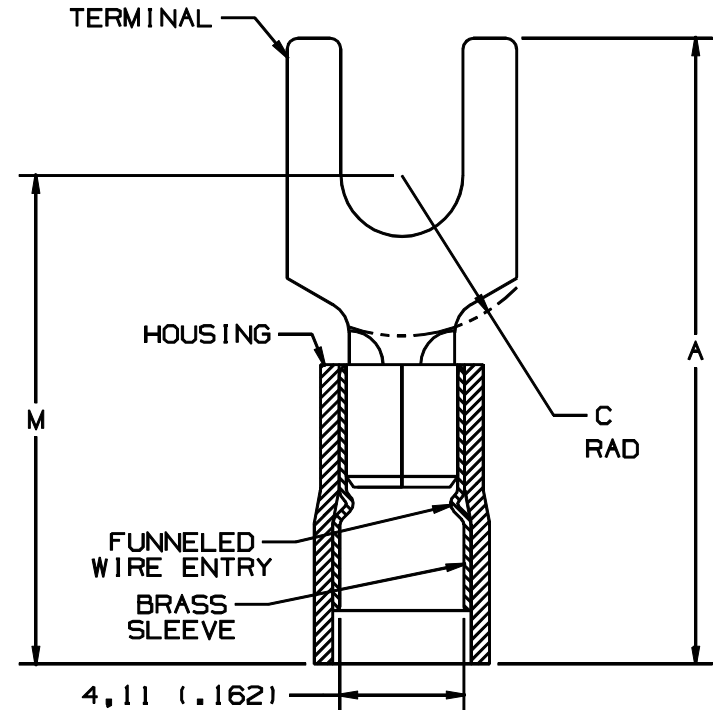
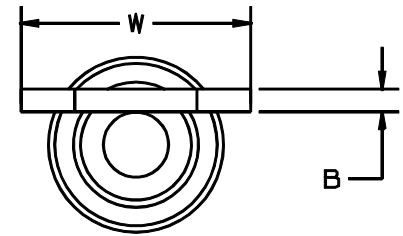


THIS COPY IS PROVIDED ON A RESTRICTED BASIS AND IS NOT TO BE USED IN ANY WAY DETRIMENTAL TO THE INTERESTS OF PANDUIT CORP.

PART NUMBER		STUD SIZE	WIRE RANGE mm ²	DIMENSIONS mm				
PREFIX	PK			A ^{±.25}	W ^{±.25}	C ^{±.38}	B ^{±.25}	M ^{±.50}
PMNF2-3F	-C -M	M3	1.5-2.5 (.16-.14)	19.81 (.78)	5.89 (.23)	5.05 (.20)	.81 (.03)	16.26 (.64)
PMNF2-4F	-C -M	M4	1.5-2.5 (.16-.14)	21.34 (.84)	7.87 (.31)	5.89 (.23)	.81 (.03)	17.27 (.68)
PMNF2-5F	-C -M	M5	1.5-2.5 (.16-.14)	21.85 (.86)	8.58 (.34)	6.35 (.25)	.81 (.03)	17.78 (.70)
PMNF2-6F	-C -M	M6	1.5-2.5 (.16-.14)	26.16 (1.02)	11.18 (.44)	8.45 (.33)	.81 (.03)	18.81 (.74)

NOTES:

- USED FOR:
 - A. 600V MAX. VOLTAGE RATING
 - B. 105°C (221°F) MAX. TEMP. RATING
 - C. SOLID & STRANDED COPPER WIRE
- PACKAGE QTY:
 - A. STD: C=100
 - B. BULK: M=1000
- MATERIAL:
 - A. STAMPING: ETP 110 COPPER, TIN PLATED
 - B. HOUSING: TYPE 6/6 NYLON, BLUE
- WIRE STRIP LENGTH: $5.6^{+.8}_{-0}$ ($7/32^{+1/32}_{-0}$)
- INSTALLATION TOOLS: REF DWGS. A41522, A41523, A41524, A41525
- DIMENSIONS IN BRACKETS ARE IN INCHES OR AWG



04	10/97	JAMB		CHANGED PERIODS TO COMMAS ON ALL METRIC DIMENSIONS.			
03	1/97	TM	RLS	UPDATE DIMENSIONS FILESPEC WAS NPC_A41518_02	05478	DBH	LA
02	1/92	BK	RLS	CHANGED COMMAS TO PERIODS #5 WAS A41511, #1C ADDED COPPER	00765	KS	LA
01	8/91	SJ	SJ	LM WIRE STRIP LENGTH WAS 7.1 mm	00563	KS	LA
00	6/91	BK	SJ	RELEASED	00538	KS	LA
REV	DATE	BY	CHK	DESCRIPTION	ECN #	PM	CUST

A41518_04

PANDUIT CORP.

TINLEY PARK, ILLINOIS

1.5-2.5 mm² METRIC NYLON INSULATED, FUNNELED ENTRY FORK TERMINAL

DRAWN BY BDK CHK'D LM SCALE NONE DRAWING NO. A41518