



Chipsmall Limited consists of a professional team with an average of over 10 year of expertise in the distribution of electronic components. Based in Hongkong, we have already established firm and mutual-benefit business relationships with customers from,Europe,America and south Asia,supplying obsolete and hard-to-find components to meet their specific needs.

With the principle of "Quality Parts,Customers Priority,Honest Operation,and Considerate Service",our business mainly focus on the distribution of electronic components. Line cards we deal with include Microchip,ALPS,ROHM,Xilinx,Pulse,ON,Everlight and Freescale. Main products comprise IC,Modules,Potentiometer,IC Socket,Relay,Connector.Our parts cover such applications as commercial,industrial, and automotives areas.

We are looking forward to setting up business relationship with you and hope to provide you with the best service and solution. Let us make a better world for our industry!



Contact us

Tel: +86-755-8981 8866 Fax: +86-755-8427 6832

Email & Skype: info@chipsmall.com Web: www.chipsmall.com

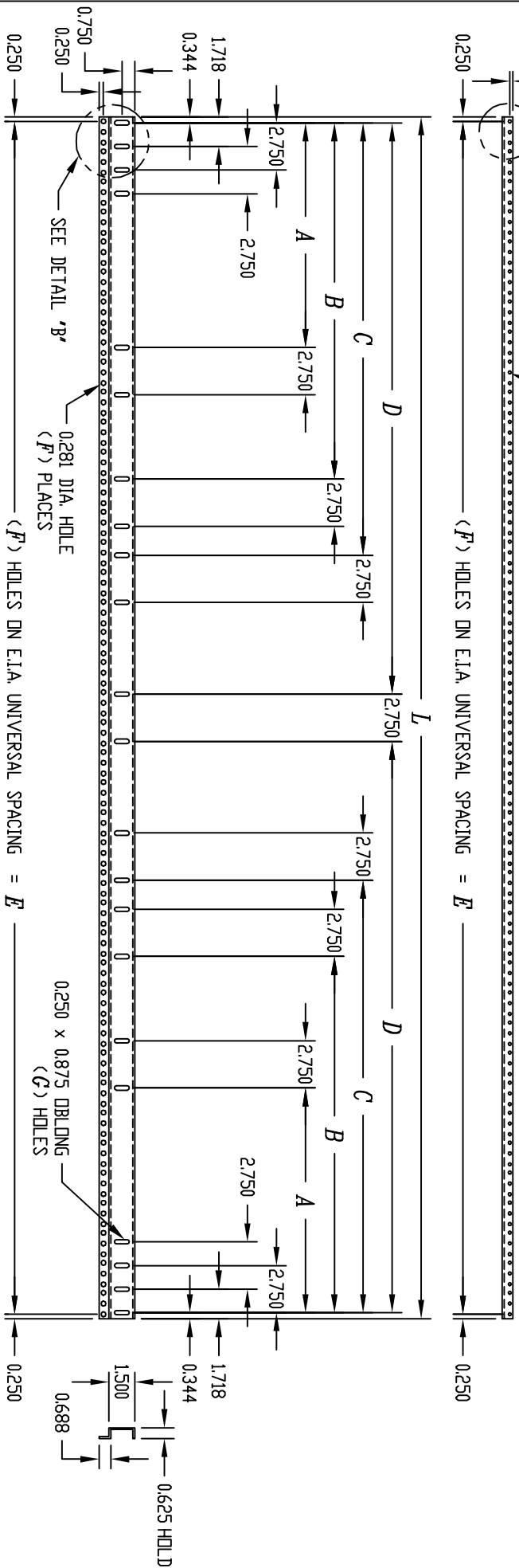
Address: A1208, Overseas Decoration Building, #122 Zhenhua RD., Futian, Shenzhen, China



PART NAME: PANEL MOUNTING RAIL PART No.: PMR-9448 TD PMR-9454 / PMR-2002 / PMR-2331 / PMR-9306 / PMR-14315

MATERIAL: 12 GA. STEEL
FINISH: SMOOTH BLACK

NOTE: PANEL MOUNTING RAIL LISTED MAY BE USED ON EITHER
SERIES 60, SERIES 2000, CLASSIC II, VALURACK, ECONDMIZER,
JAGUAR (STYLE B) OR ALL AMERICAN RACK WITH CORRESPONDING
PANEL SPACE MATCHING THE LENGTH OF THE RAILS.



CATALOG No.	L	A	B	C	D	E	F	G
PMR-9448	21.000	---	---	---	---	20.500	36	8
PMR-2331	24.500	---	---	---	---	24.000	42	8
PMR-14315	28.000	---	---	---	---	27.500	48	8
PMR-9449	31.500	---	---	---	---	31.000	54	8
PMR-2002	35.000	---	---	---	---	34.500	60	8
PMR-9450	42.000	10.188	---	---	19.281	41.500	72	14
PMR-9451	52.500	15.438	---	---	24.531	52.000	90	14
PMR-9452	61.250	13.094	---	---	28.906	60.750	105	14
PMR-9453	70.000	15.281	---	---	33.281	69.500	120	14
PMR-9306	77.000	17.016	---	---	36.781	76.500	132	14
PMR-9454	78.750	13.375	25.125	29.563	37.656	78.250	135	22