



Chipsmall Limited consists of a professional team with an average of over 10 year of expertise in the distribution of electronic components. Based in Hongkong, we have already established firm and mutual-benefit business relationships with customers from,Europe,America and south Asia,supplying obsolete and hard-to-find components to meet their specific needs.

With the principle of “Quality Parts,Customers Priority,Honest Operation,and Considerate Service”,our business mainly focus on the distribution of electronic components. Line cards we deal with include Microchip,ALPS,ROHM,Xilinx,Pulse,ON,Everlight and Freescale. Main products comprise IC,Modules,Potentiometer,IC Socket,Relay,Connector.Our parts cover such applications as commercial,industrial, and automotives areas.

We are looking forward to setting up business relationship with you and hope to provide you with the best service and solution. Let us make a better world for our industry!



Contact us

Tel: +86-755-8981 8866 Fax: +86-755-8427 6832

Email & Skype: info@chipsmall.com Web: www.chipsmall.com

Address: A1208, Overseas Decoration Building, #122 Zhenhua RD., Futian, Shenzhen, China



Search Results

Evaluate

- FAQ's

Design a Solution

- Part Drawings

- DWG-PMR40 Metal

- PDF-PMR40 Metal

How to Buy

- Bill of Material

- Favorite Products List

- Locate Distributor

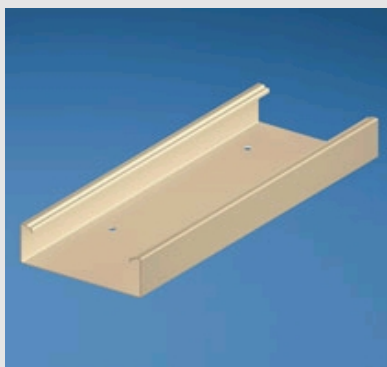
Home > Products Overview > Search Results >

Current refinements (click  to remove) Search Tips

 Text Search: 'PMR40BAL10'

Your search criteria matched only one product, shown below

PMR40BAL10



Pan-Way® PMR40 Metal Raceway is a multi-channel channel surface mounted solution for routing and terminating both electrical wire and data cable.

- c-UL-us listed and rated to 600V; meets UL5 and CSA22.2 No. 62 -93 safety standards
- Patent pending offset snap -on faceplate and divider wall design locates data terminations outside the data channel for greater cable capacity
- Fully compliant TIA/EIA 568B and 569B solution maintains a 2" bend radius throughout the system for routing high performance 10 Gigabit copper and fiber cable for reliable cable performance
- System accepts both snap -on and NEMA standard double gang faceplates, increasing versatility for termination of power and data cabling for increased termination options
- Pre-punched mounting holes eliminate the need to remove knockouts or drill holes for quick and easy installation

All AW (Arctic White) and two and three meter products are only available outside of North America as a standard item. Contact customer service for minimum order quantities, stock and

other color availability.

Part Number	PMR40BAL10
RoHS Compliancy Status	Compliant
Part Description	PMR40 raceway base available in 10' lengths. Supplied with prepunched mounting holes.
Product Type	Power Rated
Material	Galvanized Steel
Color	Almond
Length (ft.)	10
Internal Area (in ²)	7.45" (189.2mm)
CE Compliant	No
Pricing Description	PMR40 Power Rated Multi Channel Metal Raceway Bas@0ft.
Product Length	10'
Product Size	40
Raceway Size	5.04" x 1.61" (128.0mm x 40.9mm)
Min. Order UOM	FT
Min. Order Qty.	50
BOM Qty. (# of Pkgs.)	<input type="text" value="0"/>
Add to Favorite Product List	<input type="button" value="e"/>

Please [register](#) to utilize the 'Bill of Materials', 'Submit Quotes' and 'Favorite Product List' features.