



Chipsmall Limited consists of a professional team with an average of over 10 year of expertise in the distribution of electronic components. Based in Hongkong, we have already established firm and mutual-benefit business relationships with customers from,Europe,America and south Asia,supplying obsolete and hard-to-find components to meet their specific needs.

With the principle of "Quality Parts,Customers Priority,Honest Operation,and Considerate Service",our business mainly focus on the distribution of electronic components. Line cards we deal with include Microchip,ALPS,ROHM,Xilinx,Pulse,ON,Everlight and Freescale. Main products comprise IC,Modules,Potentiometer,IC Socket,Relay,Connector.Our parts cover such applications as commercial,industrial, and automotives areas.

We are looking forward to setting up business relationship with you and hope to provide you with the best service and solution. Let us make a better world for our industry!



Contact us

Tel: +86-755-8981 8866 Fax: +86-755-8427 6832

Email & Skype: info@chipsmall.com Web: www.chipsmall.com

Address: A1208, Overseas Decoration Building, #122 Zhenhua RD., Futian, Shenzhen, China



Search Results

- Evaluate
 - FAQ's
- Design a Solution
 - Catalog Cut Sheet
 - PDFPMR40BWH10 P
 - Part Drawings
 - PDFBackfeed Fit..
 - DWG-Backfeed Fit..
- How to Buy
 - Bill of Material
 - Favorite Products List
 - Locate Distributor

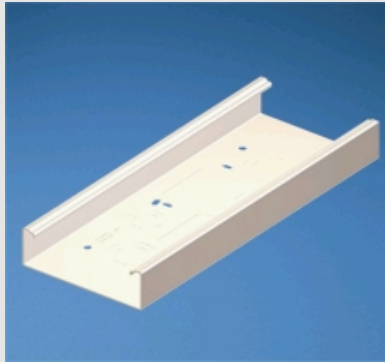
Home > Products Overview > Search Results >

Current refinements (click to remove) Search Tips

Text Search: 'PMR40BFWH'

Your search criteria matched only one product, shown below

PMR40BFWH



• PMR40 fittings are designed to exceed the TIA/EIA-568-B and 569-B required minimum bend radius for high performance copper and fiber optic cabling systems

Part Number	PMR40BFWH
RoHS Compliancy Status	Compliant
Part Description	Backfeed fitting. Allows cable entry through the back of the PMR40 raceway. Two round breakouts for 1/2", 3/4" and 1" conduit, two round breakouts for 3/4", 1", and 1 1/4" conduit and two 1 11/16" X 2 9/16" rectangular breakouts.
Product Type	Power Rated
Color	White
CE Compliant	No
Pricing Description	PMR40 Backfeed Fitting
Product Size	40
Min. Order UOM	PC
Min. Order Qty.	1
BOM Qty. (# of Pkgs.)	<input type="text" value="0"/>
Add to Favorite Product List	<input type="button" value="e"/>

Please [register](#) to utilize the 'Bill of Materials', 'Submit Quotes' and 'Favorite Product List' features.