



Chipsmall Limited consists of a professional team with an average of over 10 year of expertise in the distribution of electronic components. Based in Hongkong, we have already established firm and mutual-benefit business relationships with customers from,Europe,America and south Asia,supplying obsolete and hard-to-find components to meet their specific needs.

With the principle of “Quality Parts,Customers Priority,Honest Operation,and Considerate Service”,our business mainly focus on the distribution of electronic components. Line cards we deal with include Microchip,ALPS,ROHM,Xilinx,Pulse,ON,Everlight and Freescale. Main products comprise IC,Modules,Potentiometer,IC Socket,Relay,Connector.Our parts cover such applications as commercial,industrial, and automotives areas.

We are looking forward to setting up business relationship with you and hope to provide you with the best service and solution. Let us make a better world for our industry!



## Contact us

Tel: +86-755-8981 8866 Fax: +86-755-8427 6832

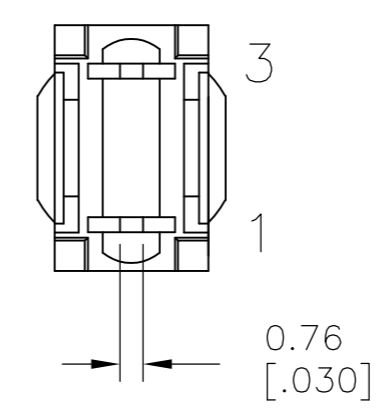
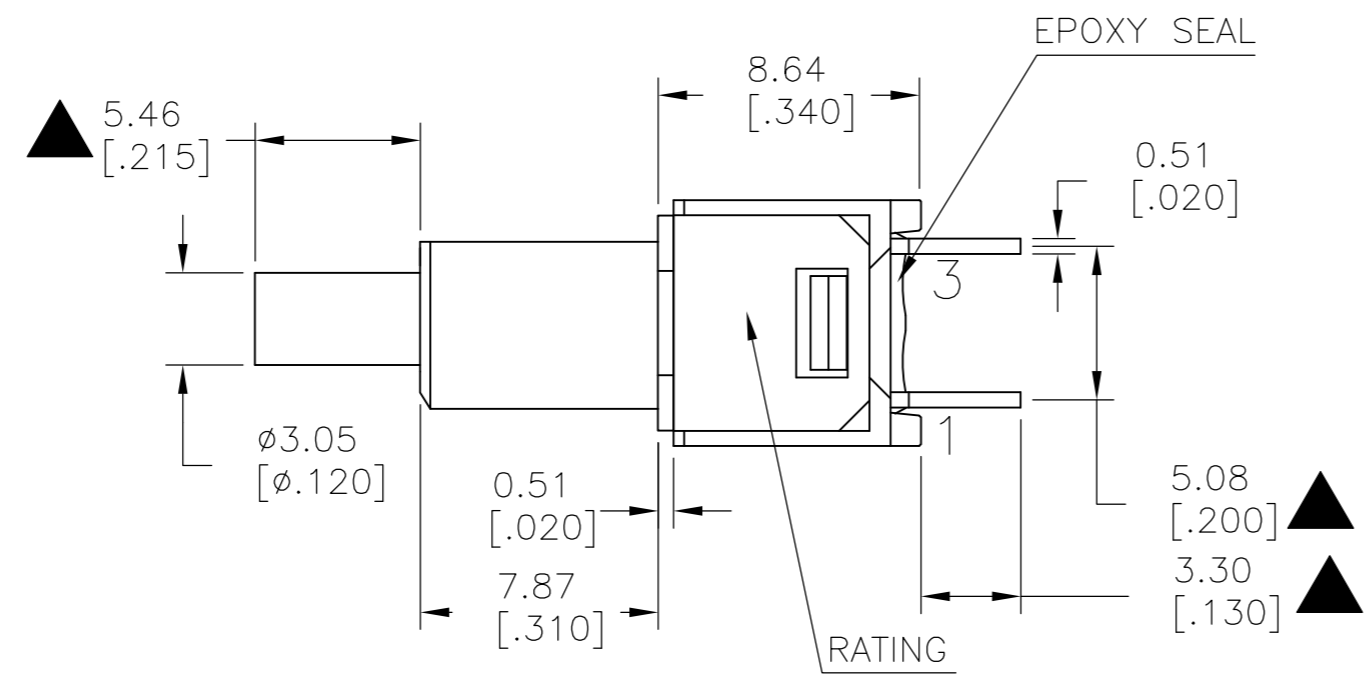
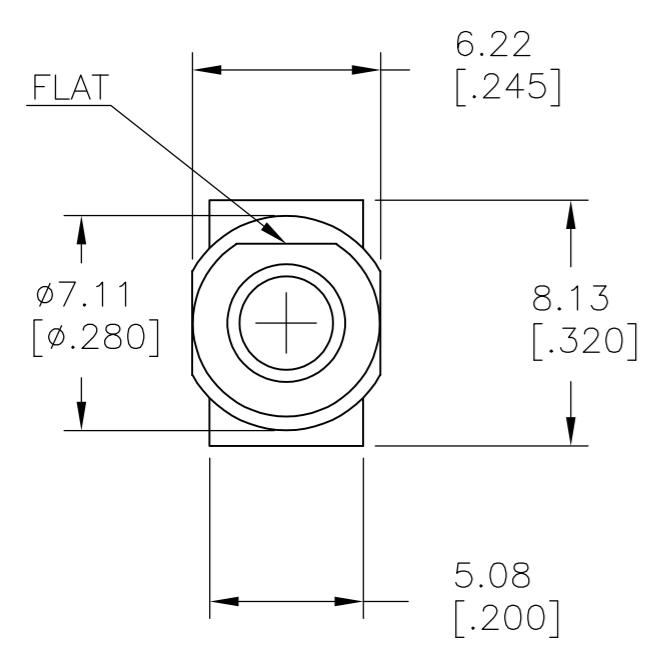
Email & Skype: info@chipsmall.com Web: www.chipsmall.com

Address: A1208, Overseas Decoration Building, #122 Zhenhua RD., Futian, Shenzhen, China



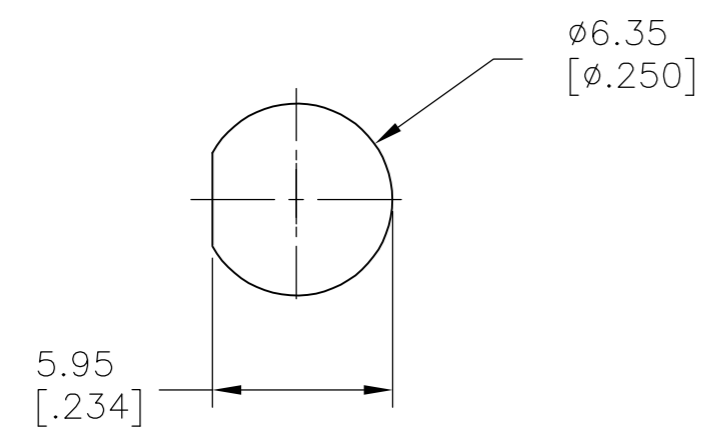
THIS DRAWING IS UNPUBLISHED. RELEASED FOR PUBLICATION  
 © COPYRIGHT - By - ALL RIGHTS RESERVED.

| REVISONS |     | DESCRIPTION               | DATE      | DWN | APVD |
|----------|-----|---------------------------|-----------|-----|------|
| P        | LTR |                           |           |     |      |
|          | A1  | REVISED PER ECO-15-014342 | 07OCT2015 | NK  | RH   |

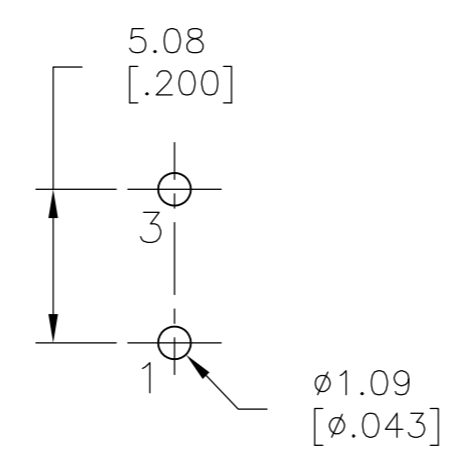


|             | POS.1 | POS.2 |
|-------------|-------|-------|
| MODEL NO.   |       |       |
| PMS9        | OFF   | MOM   |
| TERM. COMM. | OPEN  | 1-3   |
| SCHEMATIC   |       |       |

SWITCH FUNCTION



PANEL MOUNTING



P.C.MOUNTING

LAYOUT FOR PN 2267075-1

SPECIFICATIONS

- MECHANICAL LIFE: 50,000 MAKE-AND-BREAK CYCLES.
- CONTACT RESISTANCE: 20 mΩ MAX. INITIAL @ 2-4VDC 100mA FOR BOTH SILVER AND GOLD PLATED CONTACTS.
- CONTACT RATING: SILVER PLATED: 3A @120 VAC OR 28 VDC, 1A @250 VAC  
GOLD PLATED: 0.4VA MAX @20 V MAX (AC OR DC)
- INSULATION RESISTANCE: 1,000 MΩ MIN.
- DIELECTRIC STRENGTH: 1,000 Vrms MIN.@SEA LEVEL.
- OPERATING TEMPERATURE: -30°C TO 85°C.

|                  |          |                 |             |       |        |                |           |
|------------------|----------|-----------------|-------------|-------|--------|----------------|-----------|
| GOLD             | OFF-MOM  | PC THROUGH HOLE | RIGHT ANGLE | 1     | 1      | PMS9P1B08M6RE  | 2267075-2 |
| GOLD             | OFF-MOM  | PC THROUGH HOLE | VERTICAL    | 1     | 1      | PMS9P1B08M2RE  | 2267075-1 |
| CONTACT MATERIAL | FUNCTION | TERMINATION     | MOUNT ANGLE | POLES | THROWS | DESCRIPTIVE PN | TE PN     |

THIS DRAWING IS A CONTROLLED DOCUMENT.

|                  |           |               |
|------------------|-----------|---------------|
| DWN              | 10JUL2014 | NAGALAKSHMI K |
| CHK              | 10JUL2014 | HILL, RYAN    |
| APVD             | 10JUL2014 | HILL, RYAN    |
| PRODUCT SPEC     |           |               |
| APPLICATION SPEC |           |               |
| WEIGHT           | -         |               |
| CUSTOMER DRAWING |           |               |

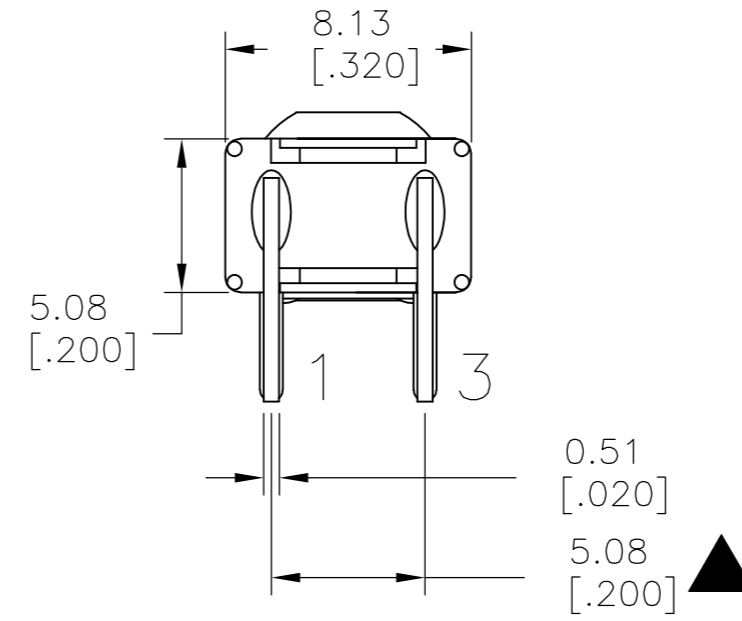
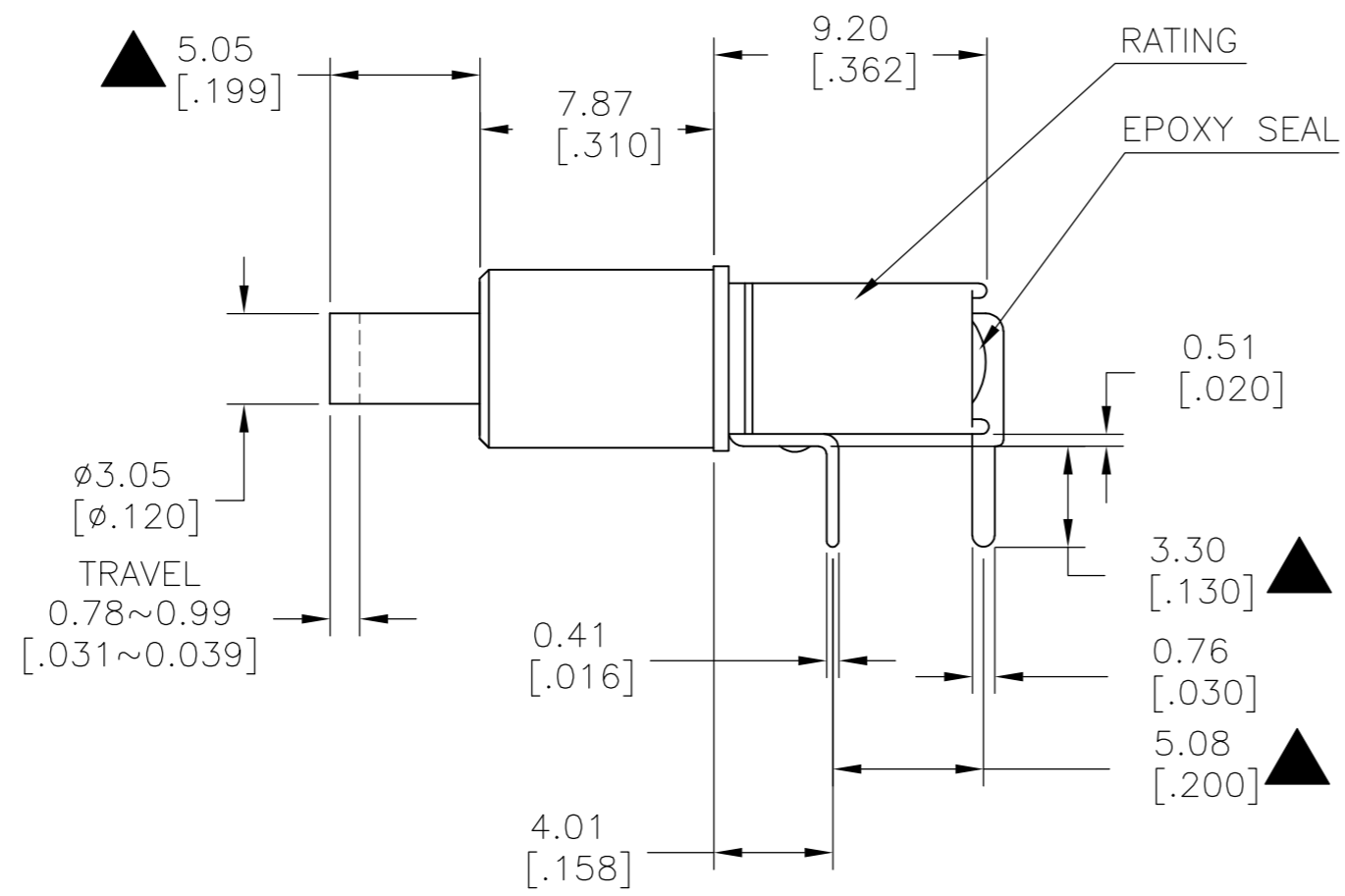
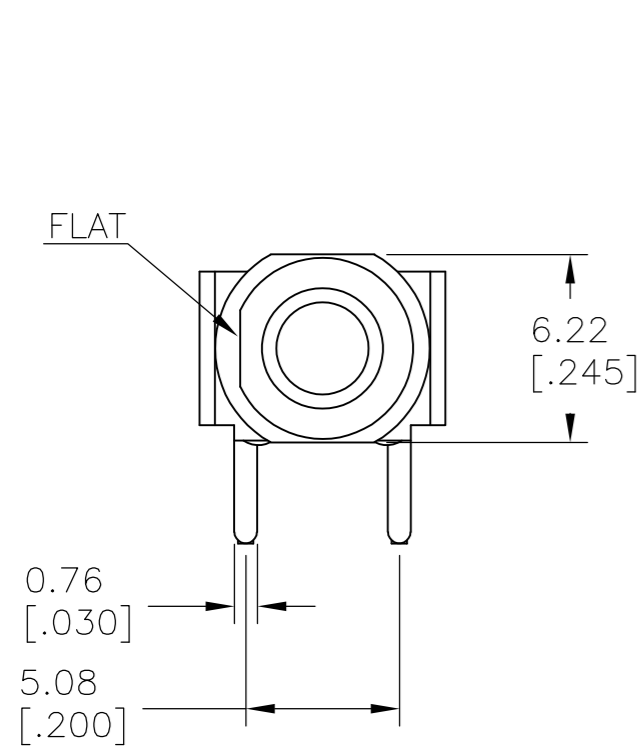
TE Connectivity

SUBMINIATURE PUSH BUTTON SWITCH

|       |           |            |               |
|-------|-----------|------------|---------------|
| SIZE  | CAGE CODE | DRAWING NO | RESTRICTED TO |
| A2    | 00779     | C=2267075  | -             |
| SCALE | 3:1       | SHEET      | 1 OF 2        |
| REV   | A1        |            |               |

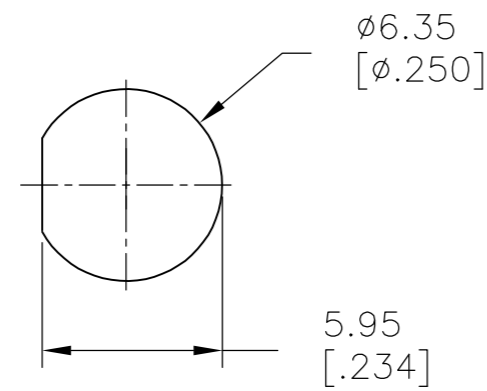
THIS DRAWING IS UNPUBLISHED. RELEASED FOR PUBLICATION  
 © COPYRIGHT - By - ALL RIGHTS RESERVED.

| LOC |     | DIST        |      | REVISIONS |      |  |  |
|-----|-----|-------------|------|-----------|------|--|--|
| P   | LTR | DESCRIPTION | DATE | DWN       | APVD |  |  |
| -   | -   | SEE SHEET 1 | -    | -         | -    |  |  |

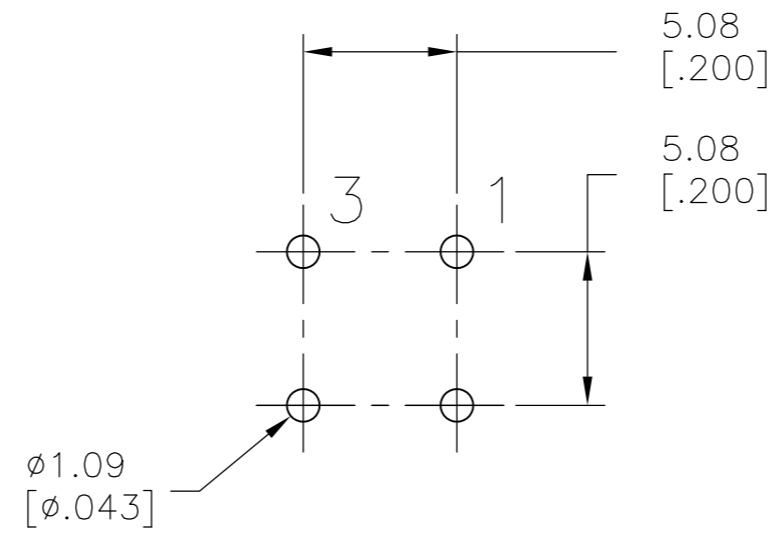


| MODEL NO.   | POS.1 | POS.2 |
|-------------|-------|-------|
|             |       |       |
| PMS9        | OFF   | MOM   |
| TERM. COMM. | 1-3   |       |
| SCHEMATIC   | OPEN  |       |
|             |       |       |

SWITCH FUNCTION



PANEL MOUNTING



P.C. MOUNTING

LAYOUT FOR PN 2267075-2

|  |                    |                                |                                 |               |
|--|--------------------|--------------------------------|---------------------------------|---------------|
| THIS DRAWING IS A CONTROLLED DOCUMENT. |                    | DWN 10JUL2014<br>NAGALAKSHMI K |                                 |               |
| DIMENSIONS: mm [INCHES]                |                    | CHK 10JUL2014<br>HILL, RYAN    |                                 |               |
| TOLERANCES UNLESS OTHERWISE SPECIFIED: |                    | APVD 10JUL2014<br>HILL, RYAN   | NAME                            |               |
| 0 PLC ± -                              | 1 PLC ± 0.38[.015] | PRODUCT SPEC                   | SUBMINIATURE PUSH BUTTON SWITCH |               |
| 2 PLC ± 0.25[.010]                     | 3 PLC ± -          | APPLICATION SPEC               | SIZE                            | CAGE CODE     |
| 4 PLC ± -                              | ANGLES ± 5°        | WEIGHT                         | A2                              | 00779         |
| MATERIAL                               | FINISH             | CUSTOMER DRAWING               | DRAWING NO                      | RESTRICTED TO |
| -                                      | -                  | SCALE 3:1                      | C=2267075                       | -             |
|  |                    |                                | SHEET 2 OF 2                    | REV A1        |