



Chipsmall Limited consists of a professional team with an average of over 10 year of expertise in the distribution of electronic components. Based in Hongkong, we have already established firm and mutual-benefit business relationships with customers from,Europe,America and south Asia,supplying obsolete and hard-to-find components to meet their specific needs.

With the principle of “Quality Parts,Customers Priority,Honest Operation,and Considerate Service”,our business mainly focus on the distribution of electronic components. Line cards we deal with include Microchip,ALPS,ROHM,Xilinx,Pulse,ON,Everlight and Freescale. Main products comprise IC,Modules,Potentiometer,IC Socket,Relay,Connector.Our parts cover such applications as commercial,industrial, and automotives areas.

We are looking forward to setting up business relationship with you and hope to provide you with the best service and solution. Let us make a better world for our industry!



## Contact us

Tel: +86-755-8981 8866 Fax: +86-755-8427 6832

Email & Skype: info@chipsmall.com Web: www.chipsmall.com

Address: A1208, Overseas Decoration Building, #122 Zhenhua RD., Futian, Shenzhen, China



### DESCRIPTION

The range of PMT6 MS mini surge arresters have been specifically designed for use in surface mount assembly applications for the protection of electrical and communication equipment against over voltage transients. Utilising our latest non-radioactive technology SRC Devices is able to offer this leading edge protection solution competitively in the global market.



#### FEATURES

- Surface mount construction
- Ultra small package
- Low capacitance (<1pF)
- Non Radioactive
- Conforms to ITU-T K12, IEC 1000-445
- RoHS Compliant



#### APPLICATIONS

- Communication equipment
- CATV equipment
- Test equipment
- Data lines
- Power supplies
- ADSL equipment
- Telecom SLIC protection

### SPECIFICATIONS

Parameters	Conditions	PMT6090			PMT6230			PMT6250			Units
		Min	Typ	Max	Min	Typ	Max	Min	Typ	Max	
<b>Device Specifications</b>											
DC Breakdown	100V/s	72	90	108	184	230	276	200	250	300	Volts
Impulse Breakdown	1kV/μs	-	-	500	-	-	500	-	-	650	Volts
Insulation Resistance <sup>1</sup>	100V	10 <sup>10</sup>	-	-	10 <sup>10</sup>	-	-	10 <sup>10</sup>	-	-	Ohms
Capacitance	1MHz	-	-	1	-	-	1	-	-	1	pF
Arc Voltage	@5A min	-	15	-	-	15	-	-	15	-	Volts
<b>Life Ratings</b>											
Surge Life	100A (10/1000μs)	100	-	-	100	-	-	100	-	-	shots
Max Current Surge	5+5kA (8/20μs)	10	-	-	10	-	-	10	-	-	shots
AC Current	10x 1sec @ 60Hz	-	-	5	-	-	5	-	-	5	Amps
DC Holdover Voltage	per REA PE-80, 0.2A	-	65	-	-	150	-	-	150	-	Volts

Parameters	Conditions	PMT6350			PMT6400			PMT6500			Units
		Min	Typ	Max	Min	Typ	Max	Min	Typ	Max	
<b>Device Specifications</b>											
DC Breakdown	100V/s	280	350	420	320	400	480	400	500	600	Volts
Impulse Breakdown	1kV/μs	-	-	700	-	-	800	-	-	900	Volts
Insulation Resistance	100V	10 <sup>10</sup>	-	-	10 <sup>10</sup>	-	-	10 <sup>10</sup>	-	-	Ohms
Capacitance	1MHz	-	-	1	-	-	1	-	-	1	pF
Arc Voltage	I=5A min	-	15	-	-	15	-	-	15	-	Volts
<b>Life Ratings</b>											
Surge Life	100A (10/1000μs)	100	-	-	100	-	-	100	-	-	shots
Max Current Surge	5+5kA (8/20μs)	10	-	-	10	-	-	10	-	-	shots
AC Current	10x 1sec @ 60Hz	-	-	5	-	-	5	-	-	5	Amps
DC Holdover Voltage	per REA PE-80, 0.2A	-	150	-	-	150	-	-	150	-	Volts

<sup>1</sup> Insulation resistance is measured @ 50V for PMT690.



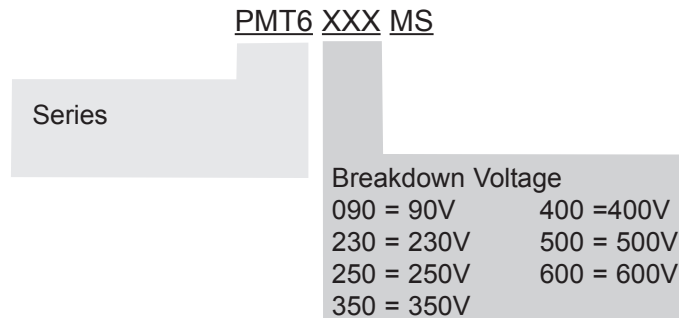
### SPECIFICATIONS

PMT6600					
Parameters	Conditions	Min	Typ	Max	Units
<b>Device Specifications</b>					
DC Breakdown	100V/s	480	600	720	Volts
Impulse Breakdown	1kV/μs	-	-	1000	Volts
Insulation Resistance <sup>1</sup>	100V	10 <sup>10</sup>	-	-	Ohms
Capacitance	1MHz	-	-	1	pF
Arc Voltage	I=5A min	-	15	-	Volts
<b>Life Ratings</b>					
Surge Life	100A (10/1000μs)	100	-	-	shots
Max Current Surge	5+5kA (8/20μs)	10	-	-	shots
AC Current	10x 1sec @ 60Hz	-	-	5	Amps
DC Holdover Voltage	per REA PE-80, 0.2A	-	150	-	Volts

<sup>1</sup> Insulation resistance is measured @ 50V for PMT690.

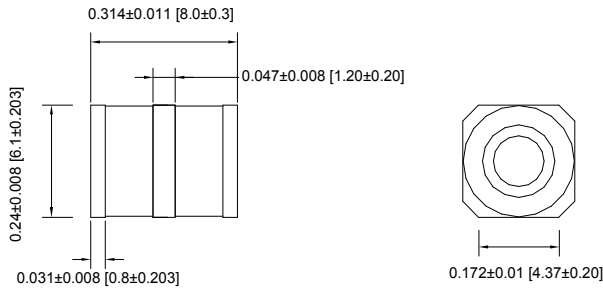
### ORDERING INFORMATION

A complete part number is represented by the digits below

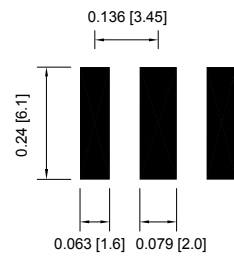


### MECHANICAL DIMENSIONS

Dimensions in mm [inches]



Recommended Pad Layout



### Tape and Reel Packaging

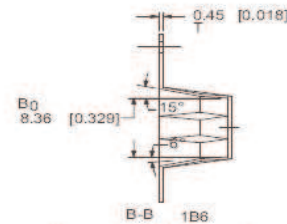
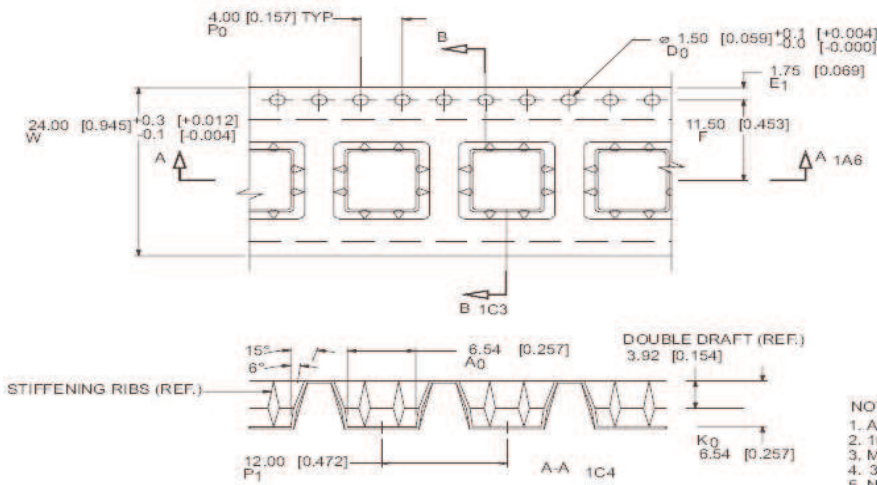


TABLE 1 POCKET SIZE	
$A_0$	$6.54\text{mm}$ [0.257]
$B_0$	$8.36\text{mm}$ [0.329]
$K_0$	$6.54\text{mm}$ [0.257]

- NOTES:  
 1. ALL DIMENSIONS ARE MILLIMETERS [INCHES]  
 2. 10 SPROCKET HOLE PITCH CUMULATIVE TOLERANCE  $\neq$  0.2mm  
 3. MATERIAL 0.45 [0.018] CARBON POLYSTYRENE  
 4. 34 METERS / 22" REEL  
 5. NO CENTER OF POCKET HOLE

