



Chipsmall Limited consists of a professional team with an average of over 10 year of expertise in the distribution of electronic components. Based in Hongkong, we have already established firm and mutual-benefit business relationships with customers from,Europe,America and south Asia,supplying obsolete and hard-to-find components to meet their specific needs.

With the principle of “Quality Parts,Customers Priority,Honest Operation,and Considerate Service”,our business mainly focus on the distribution of electronic components. Line cards we deal with include Microchip,ALPS,ROHM,Xilinx,Pulse,ON,Everlight and Freescale. Main products comprise IC,Modules,Potentiometer,IC Socket,Relay,Connector.Our parts cover such applications as commercial,industrial, and automotives areas.

We are looking forward to setting up business relationship with you and hope to provide you with the best service and solution. Let us make a better world for our industry!



Contact us

Tel: +86-755-8981 8866 Fax: +86-755-8427 6832

Email & Skype: info@chipsmall.com Web: www.chipsmall.com

Address: A1208, Overseas Decoration Building, #122 Zhenhua RD., Futian, Shenzhen, China

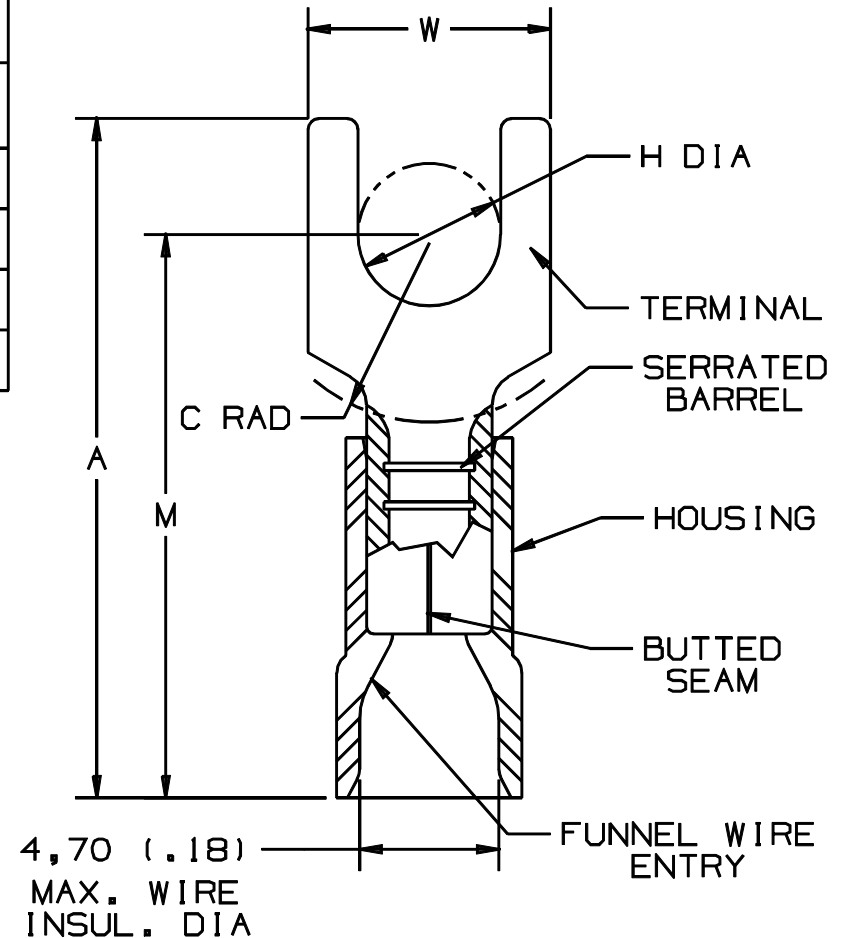


THIS COPY IS PROVIDED ON A RESTRICTED BASIS AND IS NOT TO BE USED IN ANY WAY DETRIMENTAL TO THE INTERESTS OF PANDUIT CORP.

PANDUIT PART #		STUD SIZE	DIMENSIONS mm				
PREFIX	PK		A ±0,51	W ±0,25	C ±0,38	M ±0,51	H ±0,25
PMV2-3FB	-C -M	M3	21,34 (.84)	5,84 (.23)	4,83 (.19)	17,78 (.70)	3,30 (.13)
PMV2-4FB	-C -M	M4	22,86 (.90)	7,87 (.31)	5,84 (.23)	18,80 (.74)	4,57 (.18)
PMV2-5FB	-C -M	M5	23,37 (.92)	8,64 (.34)	6,10 (.24)	19,30 (.76)	5,33 (.21)
PMV2-6FB	-C -M	M6	27,69 (1.09)	11,18 (.44)	8,13 (.32)	21,34 (.84)	6,60 (.26)

NOTES:

- USED FOR:
 - A. 600V MAX. VOLTAGE RATING
 - B. 105°C (221°F) MAX. TEMP. RATING
 - C. 1,5-2,5mm² (#16-14 AWG), STRANDED COPPER WIRE
- MATERIAL:
 - A. STAMPING - 0,81mm (.03) THK COPPER, TIN PLATED
 - B. HOUSING - BLUE VINYL
- DIMENSIONS IN BRACKETS ARE IN INCHES
- PACKAGE QTY:
 - A. STD: C=100
 - B. BULK: M=1000
- WIRE STRIP LENGTH: 7,9 ^{+0,8}/₋₀ (5/16 ^{+1/32}/₋₀)
- INSTALLATION TOOLS: REF. DWGS. A41522, A41523, A41524, A41525



A41425_01

							PANDUIT CORP.		TINLEY PARK, ILLINOIS		
01	10/97	TM		CHANGED DECIMAL POINTS TO COMMAS					2PC. VINYL INSULATED METRIC FORKS 1,5-2,5mm ² BARREL		
00	10/91	BK	RS	RELEASED			00687	LA	KS		
REV	DATE	BY	CHK	DESCRIPTION	ECN #	CUST	PM	DRAWN BY	CHK'D	SCALE	DRAWING NO.
								BDK	RS	NONE	A41425