



Chipsmall Limited consists of a professional team with an average of over 10 year of expertise in the distribution of electronic components. Based in Hongkong, we have already established firm and mutual-benefit business relationships with customers from,Europe,America and south Asia,supplying obsolete and hard-to-find components to meet their specific needs.

With the principle of “Quality Parts,Customers Priority,Honest Operation,and Considerate Service”,our business mainly focus on the distribution of electronic components. Line cards we deal with include Microchip,ALPS,ROHM,Xilinx,Pulse,ON,Everlight and Freescale. Main products comprise IC,Modules,Potentiometer,IC Socket,Relay,Connector.Our parts cover such applications as commercial,industrial, and automotives areas.

We are looking forward to setting up business relationship with you and hope to provide you with the best service and solution. Let us make a better world for our industry!



Contact us

Tel: +86-755-8981 8866 Fax: +86-755-8427 6832

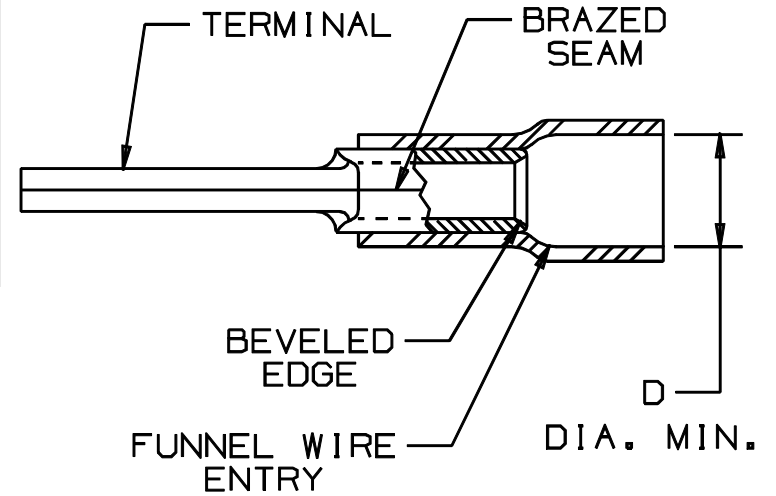
Email & Skype: info@chipsmall.com Web: www.chipsmall.com

Address: A1208, Overseas Decoration Building, #122 Zhenhua RD., Futian, Shenzhen, China



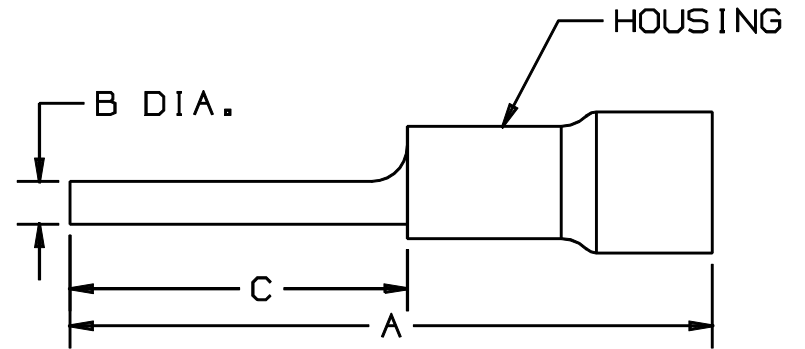
THIS COPY IS PROVIDED ON A RESTRICTED BASIS AND IS NOT TO BE USED IN ANY WAY DETRIMENTAL TO PANDUIT

PANDUIT PART #		WIRE SIZE mm ²	DIMENSIONS mm				HOUSING COLOR
PREFIX	PK		A ±.8	B DIA. ±.3	C ±.5	D DIA.	
PMV1-P10	-C -M	0,5-1,5	21,1 (.83)	2,0 (.08)	11,9 (.47)	3,8 (.15)	RED
PMV2-P10	-C -M	1,5-2,5	21,1 (.83)	2,0 (.08)	11,9 (.47)	4,3 (.17)	BLUE
PMV6-P10	-L -D	*2,5-6,0	27,9 (1.10)	2,5 (.10)	14,0 (.55)	6,4 (.25)	YELLOW



NOTES:

- USED FOR:
A. SOLID OR STRANDED COPPER WIRE
*B. WIRE RANGE: 4,0-6,0mm² FOR CT-1551M
- MATERIAL:
A. STAMPING - COPPER, TIN PLATED
B. HOUSING - VINYL
- DIMENSIONS IN BRACKETS ARE IN INCHES
- PACKAGE QTY:
A. STD: -L=50, -C=100
B. BULK: -D=500, -M=1000
- WIRE STRIP LENGTH: 7,1 $\begin{matrix} +.8 \\ -0 \end{matrix}$ (9/32 $\begin{matrix} +1/32 \\ -0 \end{matrix}$)
- INSTALLATION TOOLS: REF. DWGS. A41522, A41523, A41524, A41525



A41446_04

04	10/97	TM		CHANGED DECIMAL POINTS TO COMMAS				 CORP. TINLEY PARK, ILLINOIS VINYL INSULATED METRIC PIN TERMINAL
03	5/97	TM	WJB	CORRECTED SPELLING ERROR	05827	LA	DBH	
02	3/97	JKD	SKB	ADDED CT-1551M TO NOTES	05700	LA	DBH	
01	10/94	TH	RLS	UPDATED NOTES AND DIMENSIONS	2545	LA	KS	
REV	DATE	BY	CHK	DESCRIPTION	ECN#	CUST	PM	DRAWN BY: BDK Ck'D: RLS SCALE: NONE DRAWING NO.: 41446A