



Chipsmall Limited consists of a professional team with an average of over 10 year of expertise in the distribution of electronic components. Based in Hongkong, we have already established firm and mutual-benefit business relationships with customers from,Europe,America and south Asia,supplying obsolete and hard-to-find components to meet their specific needs.

With the principle of “Quality Parts,Customers Priority,Honest Operation,and Considerate Service”,our business mainly focus on the distribution of electronic components. Line cards we deal with include Microchip,ALPS,ROHM,Xilinx,Pulse,ON,Everlight and Freescale. Main products comprise IC,Modules,Potentiometer,IC Socket,Relay,Connector.Our parts cover such applications as commercial,industrial, and automotives areas.

We are looking forward to setting up business relationship with you and hope to provide you with the best service and solution. Let us make a better world for our industry!



Contact us

Tel: +86-755-8981 8866 Fax: +86-755-8427 6832

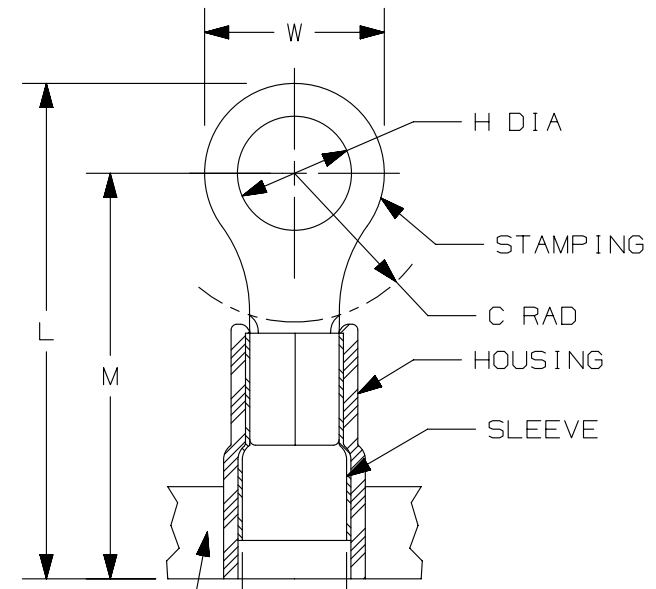
Email & Skype: info@chipsmall.com Web: www.chipsmall.com

Address: A1208, Overseas Decoration Building, #122 Zhenhua RD., Futian, Shenzhen, China



THIS COPY IS PROVIDED ON A RESTRICTED BASIS AND IS NOT TO BE USED IN ANY WAY DETRIMENTAL TO THE INTERESTS OF PANDUIT CORP.

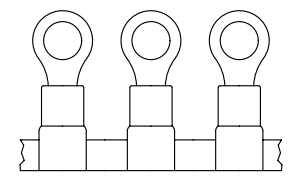
PANDUIT PART #	MILITARY PART # AND CLASS	STUD SIZE		DIMENSIONS in. [mm]				
		ENGLISH	METRIC	L ± .03 [0,8]	W ± .01 [0,3]	C ± .02 [0,5]	M ± .03 [0,8]	H ± .01 [0,3]
PN14-4R	MS25036-152 CLASS 2	#4	M3	.76 [19,3]	.25 [6,4]	.22 [5,6]	.65 [16,5]	.12 [3,1]
PMN2-3R	-----	--	M3	.85 [21,6]	.23 [5,8]	.20 [5,1]	.65 [16,5]	.13 [3,3]
PN14-6R	MS25036-107 CLASS 2	#6	M3,5	.86 [21,8]	.31 [7,9]	.25 [6,4]	.70 [17,8]	.15 [3,8]
PN14-6RN	MS25036-106 CLASS 2	#6	M3,5	.76 [19,3]	.25 [6,4]	.22 [5,6]	.65 [16,5]	.15 [3,8]
PN14-8R	MS25036-153 CLASS 2	#8	M4	.86 [21,8]	.31 [7,9]	.25 [6,4]	.70 [17,8]	.17 [4,3]
PN14-10R	MS25036-108 CLASS 2	#10	--	.86 [21,8]	.31 [7,9]	.25 [6,4]	.70 [17,8]	.20 [5,1]
PMN2-5R	-----	--	M5	.97 [24,6]	.35 [8,9]	.26 [6,5]	.71 [18,0]	.21 [5,3]
PN14-14R	MS25036-154 CLASS 2	1/4"	M6	1.06 [26,9]	.44 [11,2]	.38 [9,7]	.83 [21,1]	.27 [6,9]



- NOTES:
- USED FOR:
 - A. #16-14 AWG [1,5-2,5 mm²] SOLID OR STRANDED COPPER WIRE
 - B. 221°F [105°C] MAX. OPERATING TEMPERATURE
 - C. 600 V. MAX. VOLTAGE RATING
 - INSTALLATION TOOLS:
 - A. PRESSES: CP-861, CP-862, CP-871
 - B. APPLICATOR: CA-800EZ, CA9
 - C. DIE INSERTS: CD-800-2, CD9-2A, CD9-2B
 - WIRE STRIP LENGTH: 1/4 +^{1/32} [6,4^{+0,8}]
 - MATERIAL:
 - A. STAMPING: .03" [0,8] THK COPPER, TIN PLATED
 - B. HOUSING: NYLON, BLUE
 - C. SLEEVE: BRASS, TIN PLATED
 - SEE www.panduit.com FOR PACKAGE QUANTITIES INDICATED BY PART NUMBER SUFFIX
 - DIMENSIONS IN BRACKETS ARE METRIC EQUIVALENT

CARRIER STRIP (CONFIGURATION MAY VARY)

.16 [4,1] MAX. WIRE INSUL. DIA.



LISTED 587H E52164

CERTIFIED LR31212

TITLE		RING TERMINALS, 3 PC. NYLON INSULATED, #16-14		
ITEM REVISION NAME		CUSTOMER DRAWING		
DATASET FILE NAME		N41099BA/07		
UNLESS OTHERWISE SPECIFIED, DIMENSIONAL TOLERANCES ARE: IN [mm]		SEE NOTES		
.x ± .1 [2.54] .xxx ± .005 [.13]		DRAWING NUMBER: A41099		
.xx ± .01 [.25] ANGLES ± 5°		THIRD ANGLE PROJECTION		
REV	DATE	BY	CHK	APR
07	09.12.12	JBN	LCA	VMB
DESCRIPTION		ADDED METRIC EQUIVALENT. REVISED NOTES. UPDATED DRAWING TO CURRENT STANDARDS.		
ECN		A41099		
DRAWN BY	DATE	CHK	SCALE	SIZE
JMV	-	LA	N.T.S.	A

D101000DA/15