



Chipsmall Limited consists of a professional team with an average of over 10 year of expertise in the distribution of electronic components. Based in Hongkong, we have already established firm and mutual-benefit business relationships with customers from,Europe,America and south Asia,supplying obsolete and hard-to-find components to meet their specific needs.

With the principle of “Quality Parts,Customers Priority,Honest Operation,and Considerate Service”,our business mainly focus on the distribution of electronic components. Line cards we deal with include Microchip,ALPS,ROHM,Xilinx,Pulse,ON,Everlight and Freescale. Main products comprise IC,Modules,Potentiometer,IC Socket,Relay,Connector.Our parts cover such applications as commercial,industrial, and automotives areas.

We are looking forward to setting up business relationship with you and hope to provide you with the best service and solution. Let us make a better world for our industry!



## Contact us

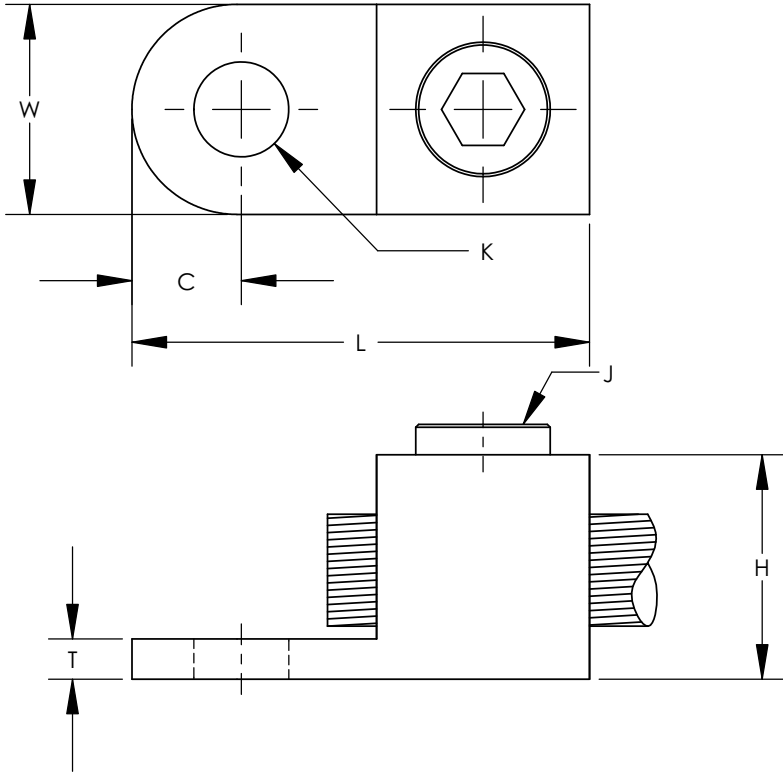
Tel: +86-755-8981 8866 Fax: +86-755-8427 6832

Email & Skype: info@chipsmall.com Web: www.chipsmall.com

Address: A1208, Overseas Decoration Building, #122 Zhenhua RD., Futian, Shenzhen, China



THIS COPY IS PROVIDED ON A RESTRICTED BASIS AND IS NOT TO BE USED IN ANY WAY DETRIMENTAL TO THE INTERESTS OF PANDUIT CORP.



NOTES:

1. UL LISTED AND CSA CERTIFIED
2. FOR COPPER WIRE ONLY.
3. DIMENSIONS ARE INCHES. DIMENSIONS IN PARENTHESIS ARE MILLIMETERS.
4. IF HEX KEY IS NOT GIVEN, FLAT HEAD SCREW IS USED.



PANDUIT PART NUMBER	CONDUCTOR RANGE	WIRE DIAMETER RANGE - IN	APPROXIMATE DIMENSIONS - IN [mm]							WRENCH SIZE	TORQUE VALUE
			C	K	H	L	T	W	J		
PNL-4-C	14 SOL - 4 STR	.064-.232	.27 [7]	.27 [7]	.56 [14]	1.25 [32]	.14 [3.57]	.53 [13]	5/16-24	SLOTTED SCREWDRIVER	45
PNL1/0-L	8 SOL - 1/0 STR	.128-.375	.38 [10]	.33 [8]	.78 [20]	1.59 [40]	.14 [3.57]	.73 [16]	1/2-20	1/4"	200
PNL-250-Q	6 SOL - 250 kcmil	.162-.575	.44 [11]	.39 [10]	1.05 [27]	1.97 [50]	.13 [3.17]	.94 [24]	5/8-18	5/16"	275
PNL-500-3	4 SOL - 500 kcmil	.204-.815	.75 [19]	.53 [13]	1.47 [43]	3.00 [76]	.25 [6.35]	1.38 [35]	15/16-16	3/8"	375
PNL-1000-3	500 kcmil - 1000 kcmil	.815-1.153	.69 [17]	.56 [14]	2.00 [51]	3.88 [99]	.38 [9.52]	1.75 [44]	1-3/8-14	1/2"	500

REV	DATE	BY	CHK	DESCRIPTION	ECN
03	9/09	JHNU	JHNU	REMOVED PNL8-C FROM DRAWING CONVERTED DRAWING TO SOLIDWORKS	
02	11/02	CJW		ADDED NEW UL & CSA SYMBOLS, CHANGED MCM TO kcmil CHANGED CATALOG NUMBER TO PANDUIT PART NUMBER	
01	3/01	RM		FILESPEC WAS N41174CA_PCD_00	
00	10/96	TM		DWG. RELEASED	

**PANDUIT CORP. TINLEY PARK, ILLINOIS**

**CONE SCREW LUG CONNECTOR  
CUSTOMER DRAWING**

SCALE N/A

DRAWING NO / CAD FILE

C41174\_03