



Chipsmall Limited consists of a professional team with an average of over 10 year of expertise in the distribution of electronic components. Based in Hongkong, we have already established firm and mutual-benefit business relationships with customers from,Europe,America and south Asia,supplying obsolete and hard-to-find components to meet their specific needs.

With the principle of "Quality Parts,Customers Priority,Honest Operation,and Considerate Service",our business mainly focus on the distribution of electronic components. Line cards we deal with include Microchip,ALPS,ROHM,Xilinx,Pulse,ON,Everlight and Freescale. Main products comprise IC,Modules,Potentiometer,IC Socket,Relay,Connector.Our parts cover such applications as commercial,industrial, and automotives areas.

We are looking forward to setting up business relationship with you and hope to provide you with the best service and solution. Let us make a better world for our industry!



## Contact us

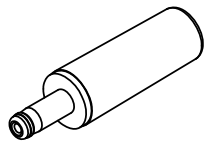
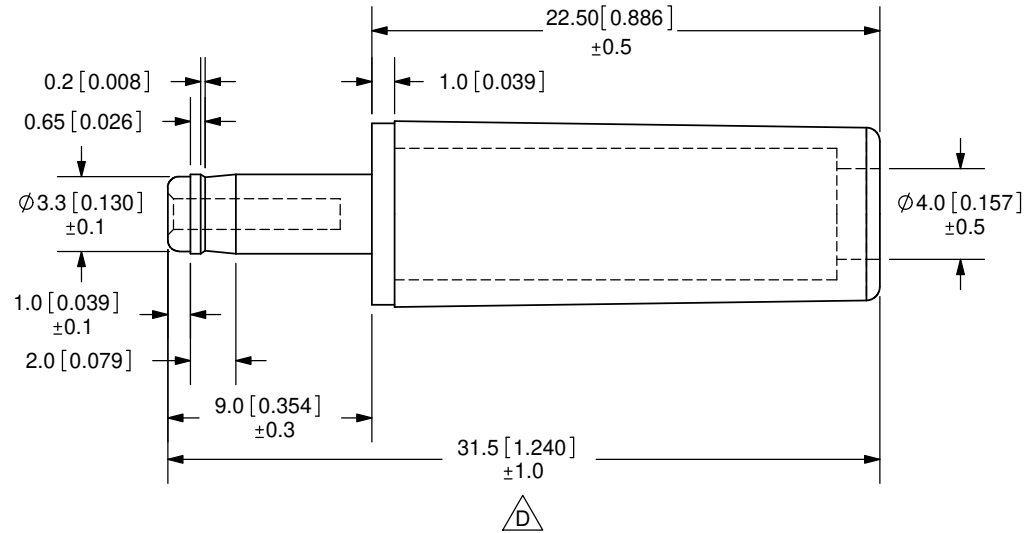
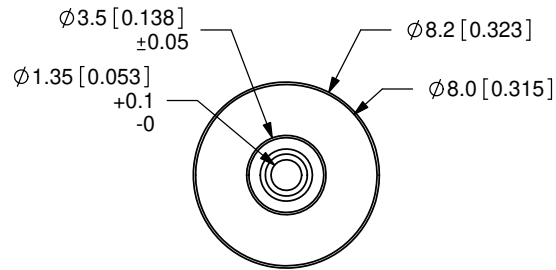
Tel: +86-755-8981 8866 Fax: +86-755-8427 6832

Email & Skype: info@chipsmall.com Web: www.chipsmall.com

Address: A1208, Overseas Decoration Building, #122 Zhenhua RD., Futian, Shenzhen, China



REV.	DESCRIPTION	DATE
A	NEW DRAWING	3/10/2006
B	Added tolerances	8/17/2006
C	rating update	6/7/2011
D	added tolerance	9/11/2015



SCALE 1:1

**SPECIFICATIONS:**  
 RATING: 24V DC @ 5A  
 OPERATING TEMP: 0 ~ +40°C

TOLERANCE:  
 ±0.2mm UNLESS OTHERWISE  
 SPECIFIED



20050 SW 112th Ave.  
 Tualatin, OR 97062  
 Phone: 503-612-2300  
 800-275-4899  
 Fax: 503-612-2383  
 Website: www.cui.com

	MATERIAL	PLATING
BARREL	Brass	Nickel
INSULATOR	POM	Black Color
HOUSING	ABS	Black Color

TITLE: DC PLUG		REV: D
PART NO. PP3-002D	UNITS: MM [INCHES]	
DRAWN BY: RDS	APPROVED BY:	SCALE: 3:1

PC FILE NAME:  
 PP3-002D

COPYRIGHT 2011 BY CUI INC.