



Chipsmall Limited consists of a professional team with an average of over 10 year of expertise in the distribution of electronic components. Based in Hongkong, we have already established firm and mutual-benefit business relationships with customers from,Europe,America and south Asia,supplying obsolete and hard-to-find components to meet their specific needs.

With the principle of "Quality Parts,Customers Priority,Honest Operation,and Considerate Service",our business mainly focus on the distribution of electronic components. Line cards we deal with include Microchip,ALPS,ROHM,Xilinx,Pulse,ON,Everlight and Freescale. Main products comprise IC,Modules,Potentiometer,IC Socket,Relay,Connector.Our parts cover such applications as commercial,industrial, and automotives areas.

We are looking forward to setting up business relationship with you and hope to provide you with the best service and solution. Let us make a better world for our industry!



Contact us

Tel: +86-755-8981 8866 Fax: +86-755-8427 6832

Email & Skype: info@chipsmall.com Web: www.chipsmall.com

Address: A1208, Overseas Decoration Building, #122 Zhenhua RD., Futian, Shenzhen, China



MATERIAL: NYLON 6/6 UL94 V-2 (RMS-01) COLOR: NATURAL	MATERIAL: NYLON 6/6 UL94 V-2 (RMS-01) COLOR: BLACK	HOLE DIAMETER ± .003 [0.08]	TOTAL MATERIAL THICKNESS RANGE	"B" ± .015 [0.4] LEG LENGTH	"C" ± .015 [0.4] HEAD THICKNESS	"D" ± .015 [0.4] HEAD	INSTALLATION TOOL	FIGURE
*PPR-5	*PPR-5B	.189 [4.8]	.039 - .375 [1- 9.5]	.421 [10.7]	.063 [1.6]	.280 [7.1]	PPR-T1	4
PPR-93-7	PPR-93-7B	.197 [5]	.059 - .197 [1.5 - 5]	.291 [7.4]	.079 [2]			6
PPR-9	*PPR-9B	.252 [6.4]	.059 - .252 [1.5 - 6.4]	.366 [9.3]	.185 [4.7]	.437 [11.1]	N/A	5
PPR-1	PPR-1B	.217 [5.5]	.094 - .158 [2.4 - 4]	.449 [11.4]	.079 [2]	.370 [9.4]	PPR-T1	1
N/A	PPR-93-14B	.197 [5]	.118 - .276 [3 - 7]	.433 [11]		.382 [9.7]		6
PPR-2	PPR-2B	.189 [4.8]	.158 - .281 [4 - 7.1]	.382 [9.7]	.059 [1.5]	.429 [10.9]		2
PPR-4	*PPR-4B	.252 [6.4]	.280 - .500 [7.1 - 12.7]	.622 [15.8]	.079 [2]	.469 [11.9]	N/A	3

* AVAILABLE BY SPECIAL ORDER ONLY

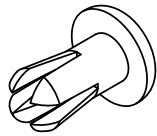


FIG. 1

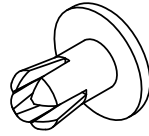


FIG. 2

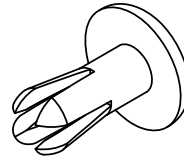


FIG. 3

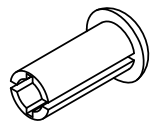
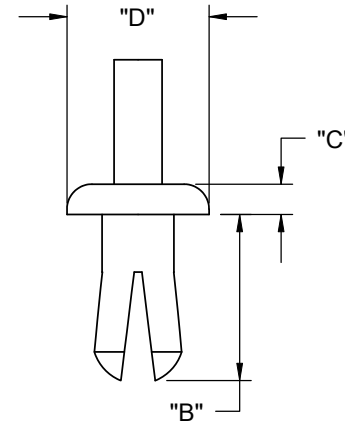


FIG. 4

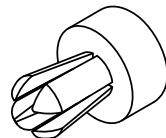


FIG. 5

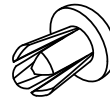


FIG. 6

TITLE: PUSH RIVETS			DWG IN IN [MM]		FINAL		PRINT TYPE	
CREATED USING SOLIDWORKS	FILE #: PPR-CATALOG	DWN: A.N.	APP: S.K.					
TOLERANCES UNLESS NOTED .XX=±.010 .XXX=±.005 FRAC.=±1/64 ANG.=±1°	SHEET: 1 OF 1	SHEET SIZE: A	DT: 11.19.08	CHKD: D.Z.	PART #		SEE TABLE	
	RE: RICHCO, INC.		RICHCO, INC. ENG@RICHCO-INC.COM (773) 539-4060				CA	
P	SEE CO 200300 FOR CHANGES	SK	01/05/09					
O	SEE CO 200284 FOR CHANGES	SK	11/20/08					
-	SEE ENGINEERING FOR REV A-N	-	----					
REV.	DESCRIPTION	ENGR.	DATE					