



Chipsmall Limited consists of a professional team with an average of over 10 year of expertise in the distribution of electronic components. Based in Hongkong, we have already established firm and mutual-benefit business relationships with customers from,Europe,America and south Asia,supplying obsolete and hard-to-find components to meet their specific needs.

With the principle of “Quality Parts,Customers Priority,Honest Operation,and Considerate Service”,our business mainly focus on the distribution of electronic components. Line cards we deal with include Microchip,ALPS,ROHM,Xilinx,Pulse,ON,Everlight and Freescale. Main products comprise IC,Modules,Potentiometer,IC Socket,Relay,Connector.Our parts cover such applications as commercial,industrial, and automotives areas.

We are looking forward to setting up business relationship with you and hope to provide you with the best service and solution. Let us make a better world for our industry!



Contact us

Tel: +86-755-8981 8866 Fax: +86-755-8427 6832

Email & Skype: info@chipsmall.com Web: www.chipsmall.com

Address: A1208, Overseas Decoration Building, #122 Zhenhua RD., Futian, Shenzhen, China



PQ1KAxx3MZPH Series

Compact Surface Mount Type
Low Power-Loss Voltage Regulators

Features

- 1.Compact surface mount package (3.4×2.2×1.2mm)
- 2.Output current : MAX.300mA
- 3.Built-in ON/OFF control function
- 4.Built-in overcurrent, overheat protection functions
- 5.Use of ceramic capacitor is possible as output smooth capacitor
- 6.RoHS directive compliant

Applications

- 1.CD-ROM drives
- 2.DVD-ROM drives

Model Line-up

Output Voltage (TYP.)	Model No.
1.5V	PQ1KA153MZPH
1.8V	PQ1KA183MZPH
2.5V	PQ1KA253MZPH
3.0V	PQ1KA303MZPH
3.3V	PQ1KA333MZPH
5.0V	PQ1KA503MZPH
9.0V	PQ1KA903MZPH

Absolute Maximum Ratings

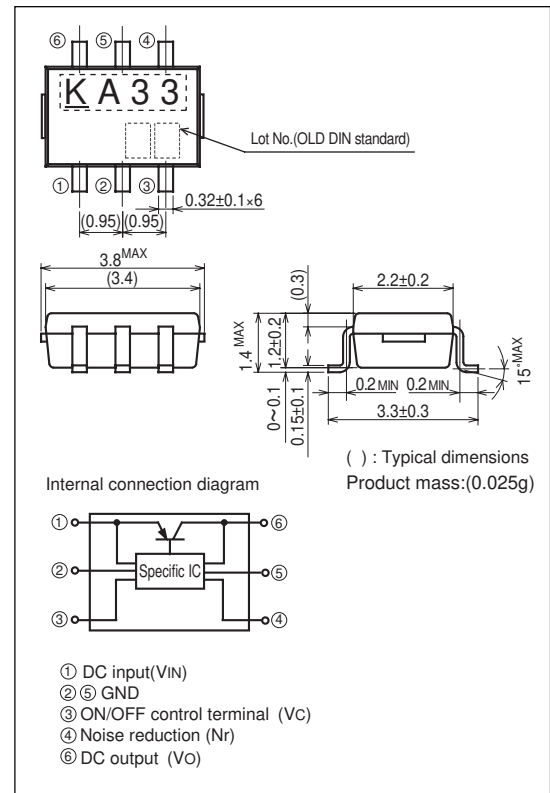
(Ta=25°C)

Parameter	Symbol	Rating	Unit
*1 Input voltage	V _{IN}	15	V
*1 Output control voltage	V _C	15	V
Output current	I _O	300	mA
*2 Power dissipation	P _D	400	mW
*3 Junction temperature	T _J	150	°C
Operating temperature	T _{opr}	-40 to +85	°C
Storage temperature	T _{stg}	-55 to +150	°C
Soldering temperature	T _{sol}	270(10s)	°C

- *1 All are open except GND and applicable terminals.
 *2 At surface-mounted condition
 *3 Overheat protection may operate at T_J:125°C to 150°C

Outline Dimensions

(Unit : mm)



Lead finish:Lead-free solder plating
(Composition: Sn2Cu)

Notice The content of data sheet is subject to change without prior notice.

In the absence of confirmation by device specification sheets, SHARP takes no responsibility for any defects that may occur in equipment using any SHARP devices shown in catalogs, data books, etc. Contact SHARP in order to obtain the latest device specification sheets before using any SHARP device.

Electrical Characteristics

(Unless otherwise specified condition shall be $V_{IN}=V_{O(TYP.)}+1.0V, I_o=30mA, V_c=1.8V, T_a=25^{\circ}C$)

Parameter	Symbol	Conditions	MIN.	TYP.	MAX.	Unit
Output voltage	V_o	—	Refer to list.1			V
Input voltage	V_{IN}	—	2.5	—	15	V
Load regulation	Reg_L	$V_o < 3V, I_o = 5 \text{ to } 300mA$	—	10	60	mV
		$V_o \geq 3V, I_o = 5 \text{ to } 300mA$	—	0.2	2	%
Line regulation	Reg_L	$V_o < 3V, V_{IN} = V_{O(TYP.)} + 1V \text{ to } V_{O(TYP.)} + 6V$	—	5	15	mV
		$V_o \geq 3V, V_{IN} = V_{O(TYP.)} + 1V \text{ to } V_{O(TYP.)} + 6V$	—	0.05	0.5	%
Temperature coefficient of output voltage	$T_{C}V_o$	$I_o = 10mA, T_j = 0 \text{ to } 100^{\circ}C$	—	± 0.5	—	%
*4 Ripple rejection	RR	Refer to Fig.2	—	55	—	dB
*4 Output noise voltage	$V_{no(rms)}$	$10Hz < f < 100kHz, C_n = 0.1\mu F, I_o = 30mA$	—	50	—	μV
Dropout voltage	V_{I-O}	$I_o = 300mA, ^{*5, *6}$	—	0.4	0.7	V
*7 On-state voltage for control	$V_{C(ON)}$	—	1.8	—	—	V
On-state current for control	$I_{C(ON)}$	$V_c = 1.8V$	—	5	30	μA
Off-voltage for control	$V_{C(OFF)}$	—	—	—	0.4	V
Quiescent current	I_q	$I_o = 0mA$	—	550	800	μA
Output off-state consumption current	I_{qs}	$V_c = 0.2V$	—	—	1	μA

*4 Typical value of 3.3V output model.

*5 Input voltage when output voltage falls 0.1V from that at $V_{IN}=V_{O(TYP.)}+1.0V$.

*6 Excluding **PQ1KA153MZPH**, **PQ1KA183MZPH**

*7 In case that the control terminal (③ pin) is non-connection, output voltage should be OFF state.

List.1 Output voltage Line-up

Parameter	Symbol	Conditions	MIN.	TYP.	MAX.	Unit
PQ1KA153MZPH	V_o	$V_{IN}=V_{O(TYP.)}+1.0V, I_o=30mA, V_c=1.8V, T_a=25^{\circ}C$	1.440	1.5	1.560	V
PQ1KA183MZPH			1.740	1.8	1.860	
PQ1KA253MZPH			2.440	2.5	2.560	
PQ1KA303MZPH			2.940	3.0	3.060	
PQ1KA333MZPH			3.234	3.3	3.366	
PQ1KA503MZPH			4.900	5.0	5.100	
PQ1KA903MZPH			8.820	9.0	9.180	

Fig.1 Standard measuring circuit of Regulator portion

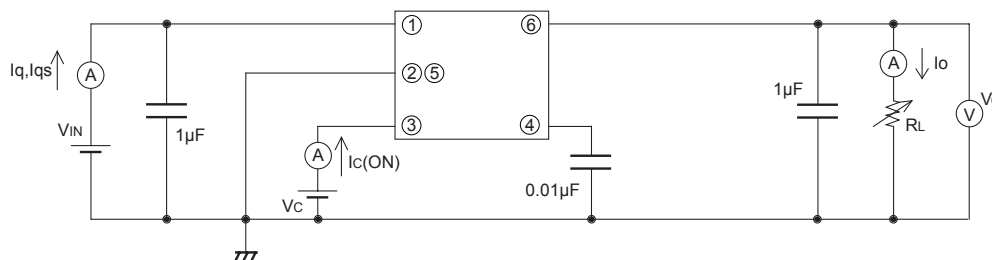


Fig.2 Standard measuring circuit of critical rate of ripple rejection

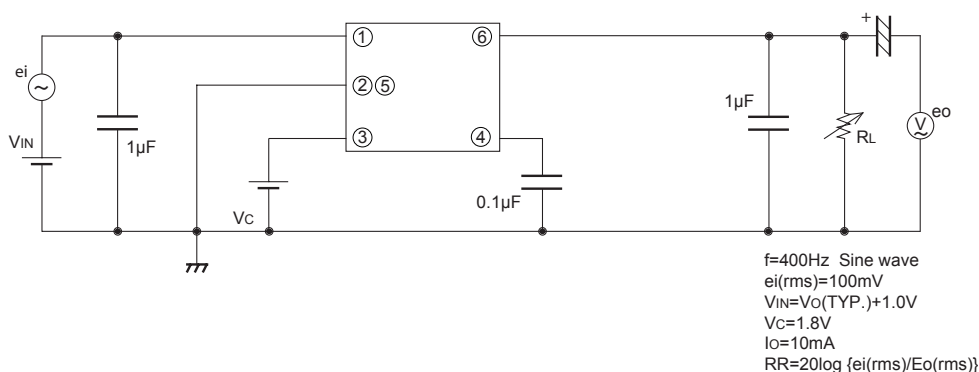
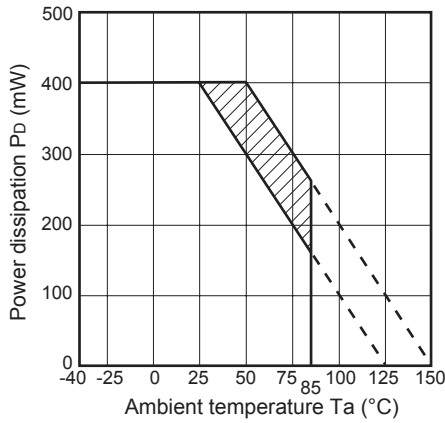


Fig.3 Power Dissipation vs. Ambient Temperature



Note) Oblique line portion: Overheat protection may operate in this area.

Fig.4 Overcurrent Protection Characteristics

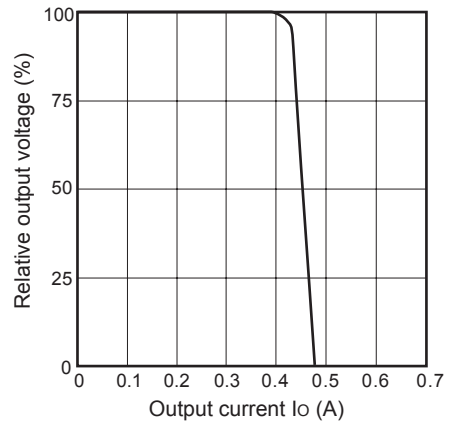


Fig.5 Output Voltage vs. Input Voltage (Typical Value) (PQ1KA333MZPH)

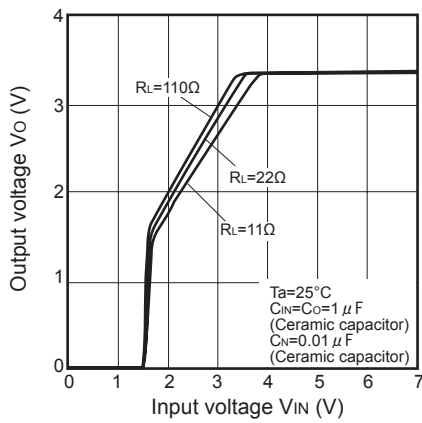


Fig.6 Circuit Operating Current vs. Input Voltage (Typical Value) (PQ1KA333MZPH)

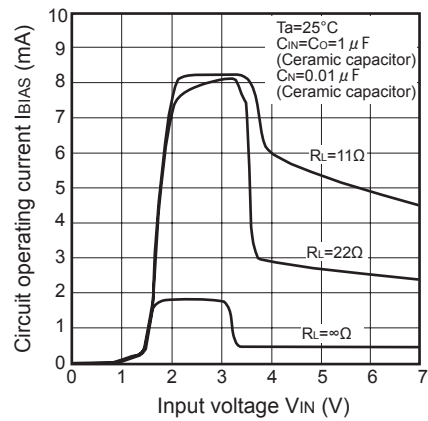


Fig.7 Quiescent Current vs. Junction Temperature (Typical Value)

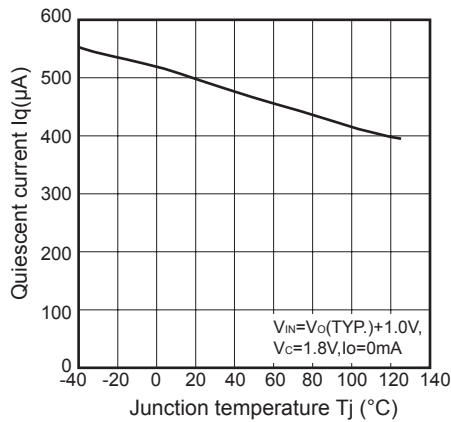


Fig.8 Dropout Voltage vs. Junction Temperature (Typical Value) (PQ1KA333MZPH)

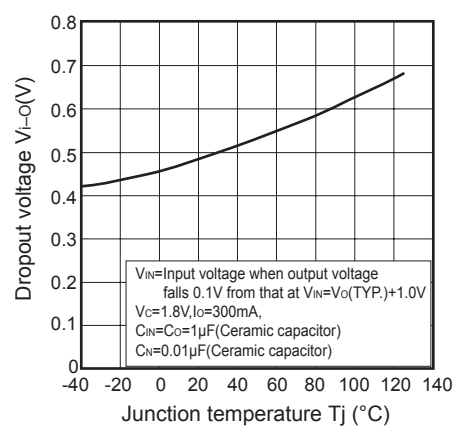


Fig.9 Output Voltage Deviation vs. Junction Temperature (Typical Value) (PQ1KA333MZPH)

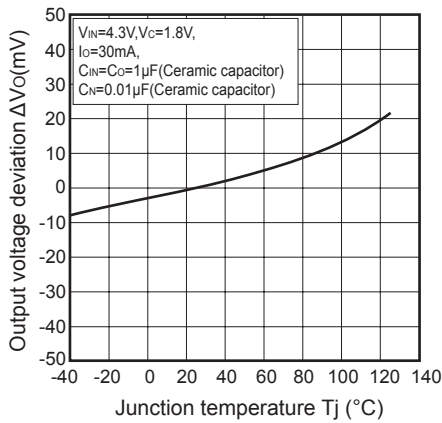


Fig.10 Dropout Voltage vs. Output Current (Typical Value)

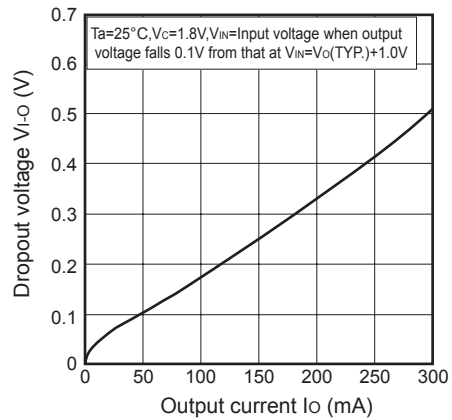


Fig.11 Ripple Rejection vs. Input Ripple Frequency (Typical Value) (PQ1KA333MZPH)

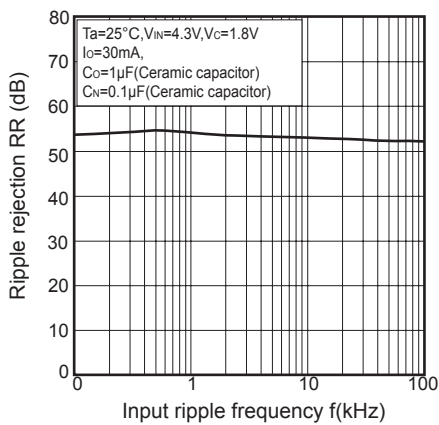
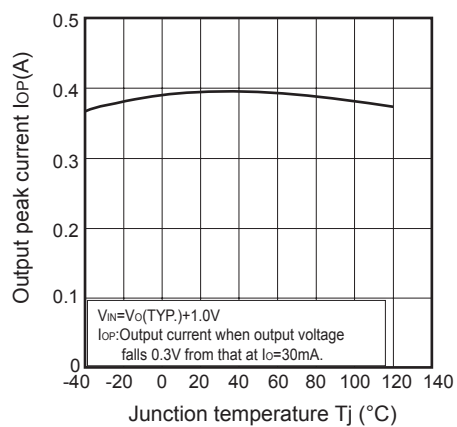


Fig.12 Output Peak Current vs. Junction Temperature (Typical Value)



Example of application

